

Thursday, December 8, 2016 • 6:00 PM
Agribition Exhibition Grounds, Regina, Saskatchewan Canada



GENETIC & FOCUS 2016





Blairs.Ag Cattle Company
Kevin & Noreen Blair
Darren & Deb Blair
Box 610, Lanigan, SK Canada S0K 2M0

Office: 306-365-3150
Kevin: 306-365-7922 • kevin@blairs.ag
Darren: 306-360-7707 • darren@blairs.ag
www.blairscattleco.com

WELCOME FROM BLAIRS.AG CATTLE CO....

It's hard to believe a year has past since our inaugural Genetic Focus Sale. We are very thankful for the support we received in the 2015 sale and look forward to visiting with breeders from around the world on our 2016 offering.

Our Blair's team continues to strive to raise genetics that encourage breeders to consider us as one of the top programs in the world. We are confident that the type and kind we raise are adaptable across many regions of the world, and we want to visit with you about our view of the beef industry. We spend considerable time searching for top donors and sires to add to our program and use embryo transfer intensively to speed up genetic advancement. The beef industry has had an interesting six months and we understand that as breeders you will want to take this opportunity to purchase the very best genetics available for the money.

Therefore we are again offering our very best in this years' Genetic Focus sale. As you look through the catalogue, you will glean into the heart and soul of our program at Blair's.Ag Cattle Company. We look forward to having you join us in Regina or on DV Auction. See you on December 8th.

Kevin Blair

Kent McCune
kent@blairs.ag
817-602-8629

Darren Blair
darren@blairs.ag
306-360-7707

Craig Blair
craig@blairs.ag
306-699-7607

Blake McMillan
bmacmillan@blairs.ag
306-528-7484

Chris Schmidt
chris@blairs.ag
306-946-7948

Kelly Schmidt
kelly@blairs.ag
306-365-7138

Chad Haaland
306-544-7770

Calla Blair
306-365-7799

Levi Jackson
306-537-9251





**Six Mile Ranch Ltd.
Clayton & Corinne Gibson
Callie, Cade & Coy**

Box 8, Fir Mountain, SK Canada S0H 1P0

Phone: 306-266-4895 • sixmile@sasktel.net
Corinne: 306-640-7970 • Clayton: 306-642-8013
www.sixmileredangus.com

Sebastian Stewart
Marketing & PR
250-423-1357

Tyson Hertz
Purebred Operations
403-376-7284

Walter Wall
Ranch Foreman

Matt Criddle
Show/Sale Cattle
Associate

"Where customers become friends"

WELCOME FROM SIX MILE RANCH LTD....

Welcome to our second Genetic Focus sale. We must extend a sincere thank you to all our customers and friends for making last year's sale an overwhelming success. We are proud to work with our partners at Blairs.Ag again to offer you another outstanding offering of genetics.

Every animal in this offering is off the top of our herd and many comprised our fall show string. We feel confident in these genetic offerings and we will be there to back every purchase 100%, as the success of our customers is our goal. Never hesitate to give us a call if things don't go as planned or if things exceed your expectations.

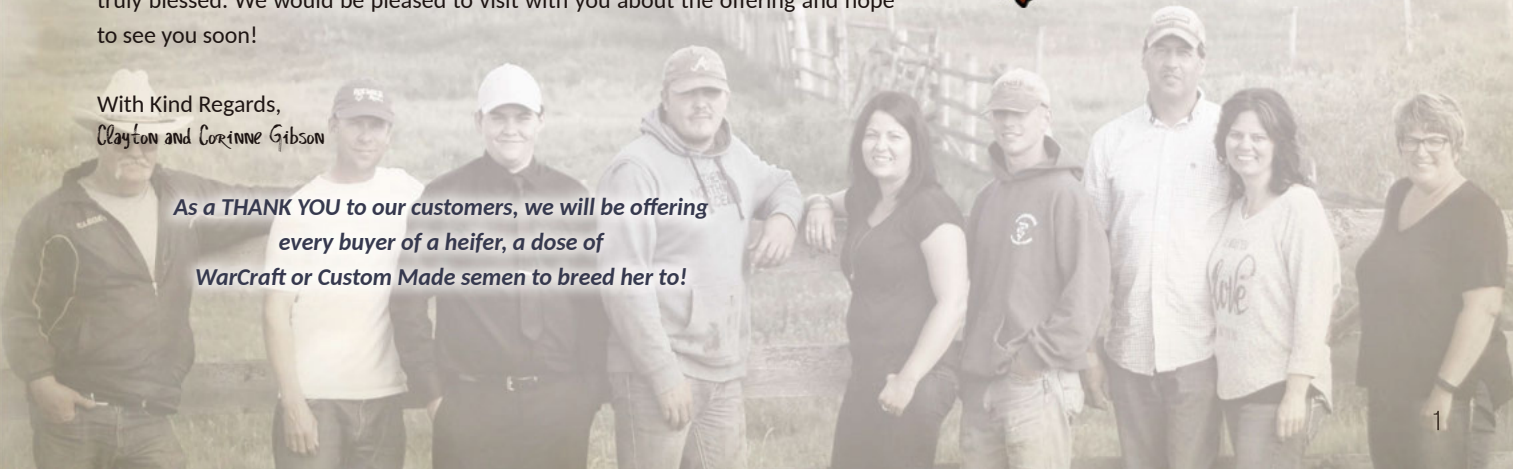
At Six Mile, we are a family operation making our sole living raising Angus cattle for almost 50 years. Our focus has always been on the female. Last year's offering produced great results for many of our customers. Our high selling heifer calf won her division at Denver and was just crowned the Reserve Grand Champion Female at the prestigious Louisville show. A bred heifer we sold last year was just named the Grand Champion Female at Brandon Ag/Ex. The progeny from many of last year's lots are seeing high demand this fall. There is nothing more gratifying than seeing our customers succeed with our genetics.

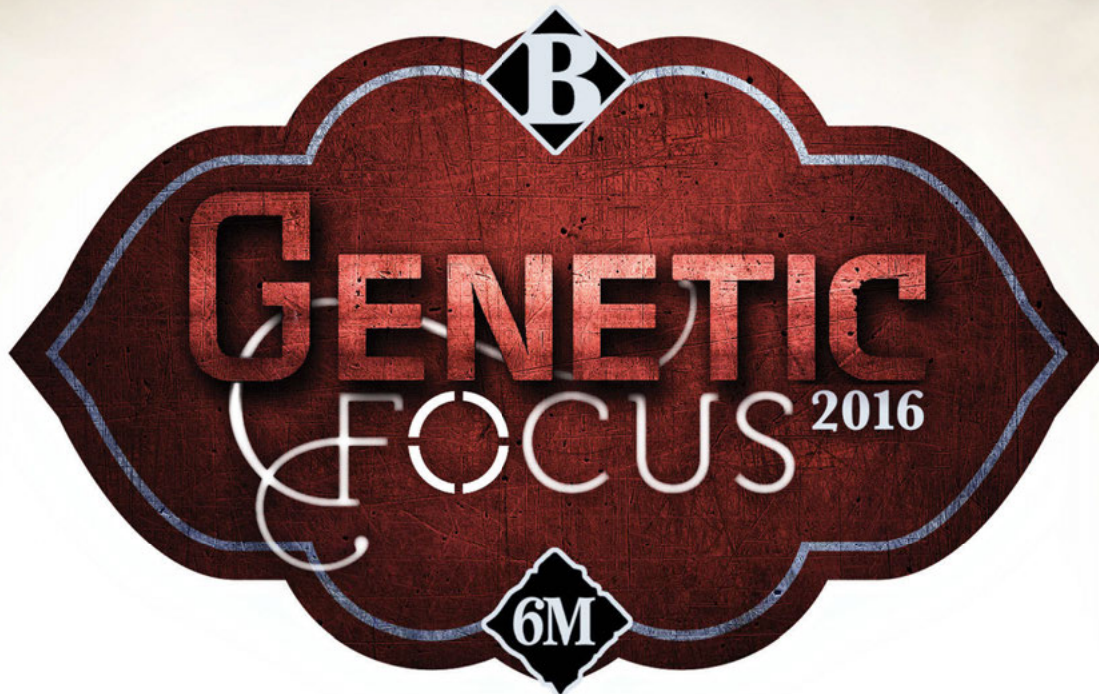
Thank you to our Six Mile team who have worked tirelessly preparing for this sale. Every female in this offering has been halter broke for your convenience. We are truly blessed. We would be pleased to visit with you about the offering and hope to see you soon!



With Kind Regards,
Clayton and Corinne Gibson

**As a THANK YOU to our customers, we will be offering
every buyer of a heifer, a dose of
WarCraft or Custom Made semen to breed her to!**





Thursday, December 8, 2016 • 6 PM
 Agribition Exhibition Grounds, Regina, Saskatchewan Canada

SALE MARKETING AGENTS

Auctioneer

Chris Poley 306-220-5006

Ringmen

Shane Michelson 403-363-9973
 Ben Wright 519-374-3335
 Mark Stock 403-357-8104

Sale Day Consultants

Tony Heins 701-400-4435
 Bryan MacKenzie 403-627-8266
 Keith Kissee, *KK Seedstock* 817-821-6263
 Graham Blagg, *Cattle In Demand* 530-913-6418
Bohrson Marketing
 Scott Bohrsen 403-370-3010
 Geoff Anderson 306-731-7921
 Rob Voice 306-361-6775
 Martin Bohrsen 306-220-7901

SALE MANAGEMENT

T Bar C Cattle Co. Ltd.

Chris Poley 306-220-5006
 Shane Michelson 403-363-9973
 Ben Wright 519-374-3335
 Ted Serhienko 306-221-2711

ONLINE BIDDING

www.dvauction.com

Sarah Buchanan 519-546-3352
 sbuchanan@gold-bar.com

SPECIAL GUESTS

Rob Smith, CEO, Canadian Angus Association
 Dave Sibbald, Canadian Angus Association President
 Brett Wildman, President Elect CAA

ONLINE CATALOGUE AND VIDEOS

www.blairscattleco.com www.sixmileredangus.com
www.buyagro.com www.dvauctions.com
www.bohrson.com

The catalogue will be available online unless a printed copy is requested. Printed catalogues will be available on sale day. ***Catalogues will be available at Canadian Western Agribition.***

SIGHT UNSEEN PURCHASES

If you are unable to make the sale, we will help you with your selection and guarantee your satisfaction.

Please join us for supper prior to the sale at 4:30 pm

DELIVERY

Receive a \$100.00 rebate per female that you take home sale day. Females will be delivered free of charge anywhere in Saskatchewan, Alberta and Manitoba. Delivery will start the week after the sale. For US customers, we will deliver females free of charge to central locations in the northern and central USA.

ACCOMMODATIONS

Please contact Corinne at 306-640-7970 if you need any further assistance.

Ask for the Six Mile Ranch/Blairs.Ag block of rooms.

Host Hotel:

Home Inn & Suites Regina Airport West
 P: 306-546-4663

Additional Rooms are Available at the Residence Inn Marriot - Pasqua Street
 P: 639-739-3010

AIR TRANSPORTATION

Regina International Airport is located just minutes from the sale site.

From the desk at T Bar...

Welcome to one of the most unique opportunities in the Angus Breed for the fall sale season. Genetic Focus 2016 combines two of Canada's foremost breeders to offer the finest breeding stock available for those who are serious about quality foundation material... such occasions are rare!

The Blair family are leaders in many phases of agriculture from livestock to agronomy. Over the past several decades, their process of building a great breeding program has been relentless in selecting the finest, predictable genetics available and the building never stops, as the Blair influence is evident at every sale and breed event.

The Six Mile program has been established over generations. Their program is proven and documented as Premier Breeders in North America (back to back at the National Western Stock Show); their powerful genetic influence is felt throughout the word.

Your hosts are competitors, yet friends, with one common goal.... to produce the highest quality seed stock with the highest degree of predictability for the livestock industry. The sale lineup is outstanding in all classes red and black ... donor and front pasture opportunities are abundant with a competitive productive edge.

December 8th will go down in history as a day of unlimited opportunity where serious producers can invest in their futures by sourcing the breed's most fresh and predictable genetic packages from two of Canada's premiere breeding establishments.

Plan to be with us in Regina. If, we may be of any assistance, prior to or sale day, feel free to contact any of the T Bar team as we will be pleased to assist with your selections.

Chris Poley



CHRIS POLEY
306-220-5006



SHANE MICHELSON
403-363-9973



TED SERHIENKO
306-221-2711



BEN WRIGHT
519-374-3335

Sale Management
T Bar C Cattle Co. Ltd.
4-3342 Millar Avenue
Saskatoon, SK S7K 7G9

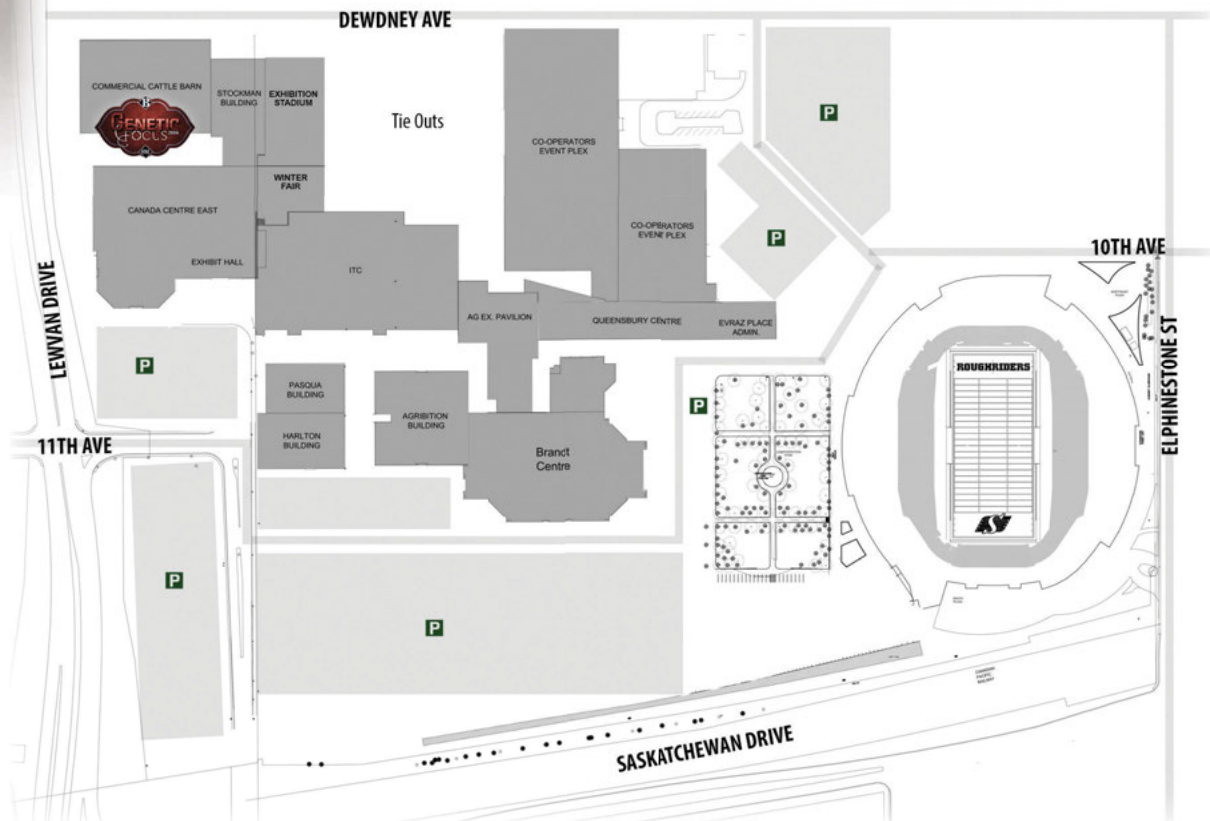
Office: 306-933-4200 • Fax: 306-934-0744
info@tbarc.com • www.tbarc.com





87 LOTS SELLING

*Featuring an epic offering
of elite Red and Black Angus genetics*



TERMS AND CONDITIONS...

Terms:

The terms of the sale are cash or cheque, payable at par at the sale location. The right of property shall not pass until after settlement has been made; no invoicing on buyers in attendance unless previous arrangements have been made. Every animal sells to the highest bidder and in cases of disputes, the auctioneer's decision will be final. Announcements from the auction block will take precedence over the printed matter in the catalogue. Current exchange rates will be announced sale day. All monies are in Canadian funds.

Exchange Rate:

For our American customers the exact exchange rate will be announced sale day but we expect it will be roughly \$750.00 USD buys \$1,000.00 CAD.

Certificate of Registration:

Each animal will carry papers issued by the Canadian Angus Association. A certificate of registry duly transferred will be furnished to the buyer for each animal after payment has been made.

Health:

All animals in the sale have met all necessary health requirements.

Liabilities:

All persons attend the sale at their own risk. The seller, facility owner and sale manager assume no liability legal or otherwise, for any accidents that occur. It is understood that T Bar C Cattle Co. Ltd. is acting only as a medium between buyer and seller and is not responsible for any failure on the part of either party to live up to his obligations. Neither does T Bar C Cattle Co. Ltd. assume any financial obligations to collect or enforce collection of any monies between parties and any legal action that may in exceptional cases be taken must be between the buyer and the seller. T Bar C Cattle Co. Ltd. assumes no responsibility for any credit extended by the seller to the buyer. The buyer must look to the seller for fulfillment of all guarantees and representations made hereunder.

Guarantee:

Each animal becomes the purchaser's risk immediately after the animal is sold. All animals in this sale will be sold under the terms and guarantees set forth by the Canadian Angus Association with regard to health, freedom from defects and from both reproductive and specific genetic unsoundness.

Pregnancy Information:

All serviceable age females have been pregnancy examined by an accredited veterinarian, giving an estimated length of gestation. This estimated gestation period shall be used only as a guideline to calving and is not a guarantee of actual service.

Delivery:

Every assistance will be given in getting your purchases home. Each animal becomes the risk of the purchaser as soon as sold.

Phone, Mail, Wire Bids:

Bidders unable to attend the sale may phone, wire or mail their bids and instructions to the sale manager, auctioneer or special representatives. Bids must be received in sufficient time prior to the sale.

Insurance:

We strongly recommend that insurance is purchased for full value.

Errors:

All announcements at sale time, written or oral, supersede any written material in the catalogue.

THE BLACK EVENT

Blairs.Ag & Six Mile



THE RED EVENT

Blairs.Ag & Six Mile





1

RED SIX MILE *Cheta Girl* **144B**
 21/02/2014 1812337

RED MRLA NEW ERA 87Y

MRLA 53W
 RED MRLA MISS 845S

RED SIX MILE CHETA 702W

RED SIX MILE SAKIC 832S
 RED SIX MILE CHETA 716S

BW	WW	YW	MM	TM
1.5	81	123	18	58

Cheta Girl is a herd bull producer in the making. This powerhouse is dark red, with ample bone and mass. She is backed maternally by the many times champion dam, Cheta 702W - a stellar producer for us. We sold an interest in 702W to Triple L Angus and Wrights Livestock and the first calf born was the 2014 Reserve Grand Champion Red Angus Bull at Agribition - Jagger. A third interest in Jagger sold at Denver for \$30,000 to J6 Farms and his semen has been highly coveted. Cheta Girl is sired by the 2013 Denver Reserve Grand Champion Bull, New Era. She had the misfortune of slipping her first service as a yearling, so we have currently held her open and plan to flush her as soon as possible after the sale. This promising two year old boasts WW, YW, TM & CW EPD's in the top 1% of the breed and Marbling and REA in the top 30%. We are proud to offer the opportunity to add this kind of maternal power to your program.

SELLS OPEN AND READY TO FLUSH - six Mile offers to assist the new buyer with flushing and is willing to breed her back to any bull in the Six Mile herd bull battery- this includes Reckoning, High Caliber and Signature.

SELLING HALF POSSESSION AND EMBRYO INTEREST - Six Mile is willing to manage 144B or the buyer can take possession if they so wish. Call for details.



dam **RED SIX MILE CHETA 702W**



sire **RED MRLA NEW ERA 87Y**



as a heifer calf **RED SIX MILE CHETA GIRL 144B**



2

RED SIX MILE *Wind Chime* **634B**
 SIXM 634B 04/06/2014 1868327

RED SIX MILE RUGER 221X

RED SIX MILE ULTIMATUM 409U
 RED SIX MILE SHAWNEE 116T

RED SIX MILE WIND CHIME 769W

RED LCHMN RED SPREAD 1271F
 RED SIX MILE MS. UMPIRE 279

BW	WW	YW	MM	TM
-0.1	63	91	22	53

Wind Chime exemplifies fertility and efficiency. Take a look at this two year old's birthdate - June 4th. She calved in our summer program, at less than two years of age and then bred back even earlier - expecting a March 2017 calf to none other than Reckoning. Those that toured our cow herd this summer took a liking to 634B. She has a unique presence to her that is tough to miss; big bellied and heavy constructed, yet elegant fronted. Her top 20% EPD profile across the board - lends itself to many exciting mating choices.

Exposed to U-2 Reckoning 149A from May 15 to July 1, 2016. Due end of February - early March.

SELLING HALF POSSESSION AND INTEREST - or the buyer has the option of doubling the bid price and taking her in her entirety. Six Mile is willing to manage her or the buyer can take possession of her. Six Mile retains the right to 10 embryos in the future if the buyer chooses to take all of her. Call for details.



daughter **RED SIX MILE WIND CHIME 689D**



RED SIX MILE WIND CHIME 634B



as a yearling **RED SIX MILE WIND CHIME 634B**



3

LMP 67W

RED BRYLOR *Priscilla 67W*
12/02/2009 1504454

RED BRYLOR SDL RICHTER 212R RED BRYLOR SDL STALLION 150N
RED XXX LAKME 70M

RED BRYLOR PRISCILLA 304S RED BRYLOR NEW TREND 22D
RED WIL-SEL PRISCILLA R. 21K

BW	WW	YW	MM	TM
3.5	58	88	21	51

Here's a golden opportunity to own the dam of one of the most revered Red Angus females in North America, Priscilla 44Z. This dynamic donor is a Blairs.Ag favorite and has another top notch group of ET calves this year, including Lot 68, 565D. Priscilla 67W is currently at the Trans Ova Satellite Center at Yackley Ranch in Onida, SD and will remain there to continue embryo production. You will have the opportunity to share in her genetic productivity and could potentially have eggs in your tank before Christmas!

Offering one-half embryo interest and no possession. Buyer will receive the first 6 embryos produced at no charge and will split her production and ET costs thereafter with Blairs.Ag.



daughter **RED BLAIR'S PRISCILLA 44Z**



RED BRYLOR PRICILLA 67W



daughter **RED BLAIR'S PRICILLA 565D**

This is definitely one of the most impressive and nicest made Kargo daughters around. She's really a model female with great balance, look, correctness and dimension. She has an excellent udder with extra volume. Honestly, she's slipped through the cracks and has never made to an ET center, but now it's time and you can benefit by getting a fresh donor that's ready to go immediately after the sale. Owned with Rob Saik.

Selling full possession plus 50% embryo interest.



as a calf **RED BLAIRS LASIE 76X**



4

RED BLAIRS Lasie 76X
BBC 76X 21/05/2010 1590029

- RED RINGSTEAD KARGO 215U

RED RINGSTEAD KARGO 107M
RED RINGSTEAD MS EQUAL 589P
- RED RIVERDALE LASIE 175U

RED GEIS RAMBLER 243'04
RED RIVERDALE LASIE 148R

BW	WW	YW	MM	TM
0.4	54	77	17	44

5

RED TOWAW Copper Lady 8T
WDV 8T 23/05/2007 1459304

- RED REDRICH NIGHT 14N

RED STEWART BUCKSHOT 11'00
RED TER-RON TIFFANY 14J
- RED TOWAW COPPER LADY 107P

WILBAR BATTALION 100L
RED SHODEREE RUBY 42J

BW	WW	YW	MM	TM
0.7	38	53	13	31

Copper Lady 8T is a dark red outcross female that is now proving her value as a top notch donor matron. She's really ideal in every way combining perfect size, fleshing ability with structural balance and correctness. Maybe one of the most exciting features is that she's bred to our new herdsire, Tommy Jack, making her one of the few in North America to carry his service. We have great expectations for this mating. She is just finishing up her 9 IVF aspirations and has averaged 17 embryos. She is currently at Yackley's in South Dakota and will be available for shipment anywhere in the U.S. or Canada. Pasture exposed to TWG Tommy Jack 166A from June 1 to August 15, 2016. Due late April.



service sire **TWG TOMMY JACK 166A**





You will really like the looks of this superb Mulberry female. She is really sound structured, good footed and has exceptional quality in every category. Her extra dimension, super design and maternal ability make her one the best in the sale. Check out her Bingo heifer calf, lot 75, 523D, in the sale and mark her down to buy.

AI bred on May 13, 2016 to Red U-2 Renown 193C. Pasture exposed to Red U-2 Renown 193C from June 1 to September 1, 2016. Due late February.



daughter **RED BLAIR'S DOLL 523D**

6

RED TFCC Doll 202Z

IMP 0202Z

01/02/2012

1804946

RED FINE LINE MULBERRY 26P

RED COMPASS MULBERRY 449M
RED DUS FAYETTE 8G

RED THREE FIRES DEUCES DOLL601

RED J BAR 7 GRAND CANYON 2222
RED VGW 613 DOLL 0011

BW	WW	YW	MM	TM
1.3	72	112	17	53

7

RED TER-RON Bobbie 136X

HFX 136X

01/03/2010

1561901

RED U-2 BIG LEAGUE 544R

RED LCC MAJOR LEAGUE A502M
RED U-2 ANEXA 09E

RED TER-RON BOBBIE 093T

RED TER-RON FULLY LOADED 540R
RED TER-RON BOBBIE 093N

BW	WW	YW	MM	TM
1.8	65	81	14	46



If you like lots of power, width and extra dimension, you better take a look at this ultra stout Big League daughter. She's very straightlined, good topped and balances up very well for the power that she displays. Owned with Wildcat Creek Ranch.

AI bred on April 28, 2016 to Red U-2 Renown 193C. Pasture exposed to Red Cockburn Encore 106Y from June 20 to September 20, 2016. Due late May.



dam is a paternal sister to 136X **RED TER-RON SANTANA 73C**

Check out this super designed Kargo daughter that is a full sister to our top bred heifer in the inaugural Genetic Focus sale going to Brackle Ridge Cattle Co. She's young, good and has the genetic power to be a big time producer in your program.

Pasture exposed to Red Cockburn Encore 106Y from June 20 to September 21, 2016. Due early May.



\$24,000 full sister **RED BLAIR'S SOAPY 84B**



dam **RED SOO LINE SOAPY 5269**

8

RED BLAIRS Soapy 113Z
BBC 113Z 24/04/2012 1695481

RED RINGSTEAD KARGO 215U

RED RINGSTEAD KARGO 107M
RED RINGSTEAD MS EQUAL 589P

RED SOO LINE SOAPY 5269

RED TER-RON REBEL 102N
RED LPC SOAPY'S LOGAN 41K

BW	WW	YW	MM	TM
0.3	59	82	16	45

Another big power, huge barreled cow with tremendous mass and volume. She's long bodied, level hipped and is in the prime of her life. She features an outcross pedigree that traces back to some unique but solid genetics.

AI bred on April 29, 2016 to Red U-2 Renown 193C. Pasture exposed to Red Cockburn Encore 106Y from June 20 to September 22, 2016. Due late March.



9

RED BLAIRS Rebello 255Z
BBC 255Z 16/03/2012 1695443

RED BLAIR'S PREMONITION 209W

RED SIX MILE AVIATOR 217P
RED SIX MILE SIERA 257P

RED JSTN REBELLO 1S

RED BRYLOR SDL TUSCON 117N
RUSTY CREEK REBELLO 5F

BW	WW	YW	MM	TM
2.8	60	77	21	50



10

IMP 0067X

17/01/2010

EXAR Ruby 0067
1786588

BC 7022 RAVEN 7965

B C MARATHON 7022
O C C BLACKBIRD 796F

BASIN RUBY 3T51

EXAR 263C
BASIN RUBY 8454

BW	WW	YW	MM	TM
1.8	36	70	20	38

What an extraordinary female!!! This one is hard to sell. She is so striking and attractive, yet she displays incredible mass, volume and substance. Her sire, BC Raven, from the Conley program in Missouri has sired numerous high sellers and champions in the states over the years. Her mating to our new Angus Herd Sire, Bar E-L Caldwell, is the right combination to potentially throw a big time coupon. She is destined to be a premier donor for a progressive Black or even a Red program. Can you imagine the Black/red carrier progeny out of a female like this?

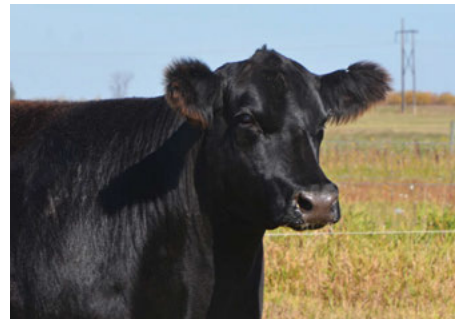
Pasture exposed to Bar-E-L Cadwell 9C from May 5 to September 1, 2016. Due early February.



sire BC 7022 RAVEN 7965



new service sire at Blairs.Ag BAR-E-L CADWELL 9C



EXAR RUBY 0067



11

NLC 1W

NLC Fatal Attraction 1W
03/01/2009 1534129

DUFF NEW ATTRACTION 6110

O C C GENESIS 872G
O C C DIXIE ERICA 814G

DOUBLE AA BELLA 31'05

DOUBLE AA BLACKMAN 292'01
DOUBLE AA BELLA 206'02

BW	WW	YW	MM	TM
3.8	28	50	27	41

A moderate made, easy fleshing, highly functional donor that has kicked out some good ones, starting with one of our herd bulls, Game Changer. The New Attraction daughter has done a fabulous job for the Nexera and Blairs.Ag programs. Be sure to look up her ultra attractive GQ daughter that sells as lot 85, 549D. Fatal Attraction is definitely one of the best producing daughters of the straight Canadian bred donor, Double AA Bella Here's a donor that can make a difference.
Owned with Nexera Land and Cattle Co.

Pasture exposed to Bar-E-L Caldwell 9C from May 5 to September 1, 2016. Due late March.



first 1W calf BNC GAME CHANGER



younger picture NLC FATAL ATTRACTION 1W



daughter of 1W 549D



Here's an interesting Black/Red Carrier female that features some genetics that have stood the test of time. This big, powerful Mambo daughter has some size and scale and goes back to the May cow family from Mountain View. She will calve early to U-2 Renown, the excellent Reckoning son that was so popular last spring. This mating could really work.

AI bred to Red U-2 Renown 193C on April 28, 2016. Pasture exposed to Red GCC Navigator 1233 from June 20 to September 22, 2016. Due mid January.



dam MVF MAY 183P

12

BBC 205X

BLAIRS Miss May 205X

05/01/2010

1588486

RED TER-RON MAMBO 28K

RED YY RED KNIGHT 640F

RED ALDER ABG STAR DUST 8G

MVF MAY 183P

F A R KRUGERRAND 410H

CAYMEN MAY 55'00

BW	WW	YW	MM	TM
1.8	63	106	13	44





13

BBC 574C

RED BLAIR's *Mabel* 574C

01/04/2015

1883772

RED SOO LINE POWER EYE 161X

RED COCKBURN RIBEYE 308U
RED TR LYNN 301R

RED SOUTHLANS MABEL 36S

RED NORTHLINE EQUALIZER 189N
RED SOUTHLAND MABEL 61P

BW	WW	YW	MM	TM
-0.1	50	80	14	39

The Power Eye females are taking North America by storm. Mabel 574C exemplifies the powerful phenotype that is winning banners at most of the summer and fall shows this year, including the recent National Red Angus show in Louisville where both Grand Champions were sired by Power Eye. Her dam is a moderate made, big bodied, powerful donor with a strong track record. This female has donor cow quality and genetic strength. Mark her down.

AI bred on April 29, 2016 to Red U-2 Renown 193C. Pasture exposed to Red Sunberry Private Stock 117B from May 15 to September 1, 2016. Preg checked safe to exposed breeding. Due late March.



dam RED SOUTHLANS MABEL 36S



sire RED SOO LINE POWER EYE 161X



paternal sister 2016 NATIONAL CHAMPION POWER EYE DAUGHTER



Here's a heifer that you'll circle in your catalog. This fantastic Kargo daughter rises to the top of the bred heifer offering. She combines size, length, design and broodiness. Note that she goes back to the excellent donor, Martini 25W, that topped our sale in 2014.

AI bred to Red U-2 Renown 193C on April 29, 2016. Pasture exposed to Red Sunberry Private Stock 117B from May 15 to September 1, 2016. Preg checked safe to exposed breeding. Due early March.



grand dam **RED RED TIDE MARTINI 25W**

14

BBC 32C

RED BLAIR'S Martini 32C
07/04/2015 1881353

RED RINGSTEAD KARGO 215U

RED RINGSTEAD KARGO 107M
RED RINGSTEAD MS EQUAL 589P

RED BLAIRS MARTINI 60Z

RED JORD REDWOOD 72X
RED RED TIDE MARTINI 25W

BW	WW	YW	MM	TM
1.1	67	99	18	51

15

BBC 93C

RED BLAIR'S Cresta 93C
27/04/2015 1881410

RED RINGSTEAD KARGO 215U

RED RINGSTEAD KARGO 107M
RED RINGSTEAD MS EQUAL 589P

RED TER-RON CRESTA 118W

RED TER-RON OLYMPIAN 822P
RED TER-RON CRESTA 104P

BW	WW	YW	MM	TM
1.8	63	86	12	44



Check out the extra size and extension of this powerful Kargo daughter. She's big, broody and exhibits a lot of capacity and body shape. She'll calve early to the popular, U2 Renown, one of the top selling Reckoning sons sold in Canada last spring. This mating should be exciting.

AI bred to Red U-2 Renown 193C on April 29, 2016. Pasture exposed to Red Sunberry Private Stock 117B from May 15 to September 1, 2016. Preg checked safe to AI breeding. Due early February.



service sire **RED U-2 RENOWN 193C**

16

BBC 82C

RED BLAIR's Queen 82C

20/04/2015

1881401

RED RINGSTEAD KARGO 215U RED RINGSTEAD KARGO 107M
RED RINGSTEAD MS EQUAL 589P

RED MRLA MISS 580Y RED LJC MISSION STATEMENT P27
RED MRLA MISS 486U

BW	WW	YW	MM	TM
0.3	63	98	13	45

Here's a typical Kargo daughter that displays the completeness, quality, femininity and maternal cow look that are evident in all of his females. Her Mission Statement dam is an extra nice McMillen cow that has been a steady producer. She's bred early to our new herdsire, Santana, and the result could be very interesting.

AI bred to Red Ter-Ron Santana 73C on April 29, 2016. Pasture exposed to Red Sunberry Private Stock 117B from May 15 to September 1, 2016. Preg checked safe to AI breeding. Due early February.



17

BBC 35C

RED BLAIR's Marcie 35C

07/04/2015

1943620

RED RINGSTEAD KARGO 215U RED RINGSTEAD KARGO 107M
RED RINGSTEAD MS EQUAL 589P

RED BLAIRS MARCIE 930Y RED CORNER CREEK CASH 2R
RED BAR-E-L MARCIE 50N

PE BW	WW	YW	MM	TM
1.3	63	87	7	38

Check out the primetime pedigree of this outstanding female. This Kargo daughter is out of a Cash cow that goes back to 50N, the dam of Ribeye 103R and the paternal grand dam of Red Cockburn Ribeye 308U. She has the genetics and the look of a top notch breeding piece.

AI bred to Red U-2 Renown 193C on April 29, 2016. Pasture exposed to Red Sunberry Private Stock 117B from May 15 to September 1, 2016. Preg checked safe to AI breeding. Due early February.



grand dam of 35C **RED BAR-E-L MARCIE 50N**

18

BBC 92C

RED BLAIR's Dixie 92C

27/04/2015

1881409

RED RINGSTEAD KARGO 215U RED RINGSTEAD KARGO 107M
RED RINGSTEAD MS EQUAL 589P

RED BLAIRS DIXIE 143Z RED U-2 PERFECTION 8067U
RED JUSTAMERE 126M DIXIE 802T

BW	WW	YW	MM	TM
1.7	64	94	13	45

Make sure to look up this heifer on the videos and on sale day. You won't be disappointed. She's extra complete, smooth made, nicely balanced and will be an awesome brood cow. She's bred to our impressive new calving ease herdsire, Red Sunberry Private Stock 117B, a top seller in the Severtson bull sale.

AI bred to Red U-2 Renown 193C on April 29, 2016. Pasture exposed to Red Sunberry Private Stock 117B from May 15 to September 1, 2016. Preg checked safe to exposed breeding. Due late March.



sire **RED RINGSTEAD KARGO 215U**



19a

SIXM 358C

RED SIX MILE *Syringa* 358C

11/03/2015

1853437

RED U-2 RECKONING 149A

RED U-2 RECON 192Y
RED U-2 ANEXA 271Y

RED GLESBAR SYRINGS 046S

RED GLESBAR DIVIDEND 50M
RED GLESBAR SYRINGA 10N

BW	WW	YW	MM	TM
-1.1	55	89	21	48

We wanted to offer our very best so we are offering a choice of these two top end Reckoning daughters. 358C is an exceptional bred female that stems from the prolific Syringa cow family. Her dam simply gets it done every year – every mating. This young female is a maternal sister to the Kruger bull that sold to OHR Red Angus, ND. Only because she has four maternal sisters working in our herd, are we able to offer a female of this caliber for sale. She ranks in the top 30% of the breed for BW, WW, YW, MK, TM, CW and MAR! Her service sire from L83 was a division champion bull at Denver and is out of the same super cow that our Super Duty sire is.

AI bred on May 7, 2016 to L83 Clint Eastwood 76C (favorable to this service). Exposed from May 15 to July 1, 2016 to PIE On the Mark.



dam RED GLESBAR SYRINGS 046S



service sire L83 CLINT EASTWOOD 76C



paternal sister RED SIX MILE Ms CRESTA 250C
NAILE RESERVE CHAMPION FEMALE



19b

RED SIX MILE *Miss Dynamo* 172C
 SIXM 172C 22/02/2015 1880895

RED U-2 RECKONING 149A RED U-2 RECON 192Y
 RED U-2 ANEXA 271Y

RED SIX MILE MISS DYNAMO 179Y RED 5L NORSEMAN KING 2291
 RED SIX MILE MS DYNAMO 833W

BW	WW	YW	MM	TM
0.7	67	107	21	56

Miss Dynamo is the kind of female you want to anchor a program around. Her dam is one of our most consistent producers with two females in this sale offering and one female working in our herd. This cow family possesses mass, natural muscle capacity and productivity. Please note that she is a maternal sisiter to lot 72, 189D. 172C is the only female in the sale carrying the service of our \$30,000 outcross sire, Outsider, who sold to Y Coulee and Leuvenburg in our 2016 sale.

AI bred on May 15, 2016 to Red Six Mile Outsider 387C (favorable to this service).
 Exposed May 30 to July 1, 2016 to Peiper On the Mark.



service sire **RED SIX MILE OUTSIDER 387C**



sire **RED U-2 RECKONING 149A**



maternal sister **RED SIX MILE MISS DYNAMO 189D**

~ CHOICE OF RECKONING DAUGHTERS ~ 358C & 172C ~



20

SIXM 324C

RED SIX MILE *Diamond* 324C

07/03/2015

1853468

RED L83 SUPER DUTY 244Z

RED SIX MILE KING RANCH 721W
RED L83 BERTHA 077

RED GLY DIAMOND 186X

RED SOO LINE KNIGHTHAWK 7369
RED DIAMOND T MAY 88N 186'06

BW	WW	YW	MM	TM
0.7	62	94	20	51

A phenomenal female here, with loads of capacity, mass and added frame. We purchased her sire, Super Duty from the L83 program as one of their high selling bulls. His dam was a big reason we sourced Super duty and we predict his daughters will inherit her maternal excellence. A Super Duty son named Platinum is a \$20,000 sire working for Scott Stock Farms, AB. This female's dam always adds the size and dimension that we see in 324C. This female is already a Champion being named the Champion Yearling Heifer at Brandon Ag Ex at the end of October. She is bred to a dark red, calving ease bull we are very excited about - Peiper on the Mark.

AI bred on May 11, 2016 to Red Six Mile Taurus 519A.
Exposed from May 31 to July 1, 2016 to PIE On the Mark (Favorable to this service). Due to calve the end of March.



service sire **PIE ON THE MARK**



her win at brandon **RED SIX MILE DIAMOND 324C**



paternal brother **PLATINIUM**



21

SIXM 422C

RED SIX MILE Emma 422C
17/03/2015 1853542

RED U-2 RECKONING 149A

RED U-2 RECON 192Y
RED U-2 ANEXA 271Y

RED SIX MILE EMMA 814A

RED BENCHMARK BETTER BEEF
SIX MILE EMMA 744W

This attractive young female is uniquely bred. Her deep red color and striking conformation command your attention. When you analyze her on the move, she seems to float flawlessly around the pen flexing at every joint. On the profile she is the type you can't look away from. Her dam is just a two year old Better Beef daughter that has huge potential in our herd. She carries service to the reigning Denver Champion, Taurus, which may be the most exciting mating in our offering.

AI bred on May 27, 2016 to Red Six Mile Taurus 519A (favorable to this service).
Exposed from June 10 to July 1 PIE On the Mark.

BW	WW	YW	MM	TM
2.1	61	101	17	48



sire **RED U-2 RECKONING 149A**



service sire **RED SIX MILE TAURUS 519A**



paternal sister at denver **RED SIX MILE CRESTA 250C**



maternal brother **RED BLAIR'S GLADIATOR 541B**



dam **RED WRAZ MARTA 42Y**

22

BBC 530C

RED BLAIR'S Crackle 530C

11/02/2015

1881303

RED HAYCOW CUTTING EDGE 055 LAFINS CUTTING EDGE 2075
RED HAYCOW 370 PRINCESS 5002

RED BLAIRS CRACKLE 204Z RED 6 MILE FULL THROTTLE 171T
RED ARWAY CRACKLE 47R

BW	WW	YW	MM	TM
0.6	59	88	19	49

An extra smooth, perfectly balanced Cutting Edge female with a real brood cow look. Her maternal brother, Red Blair's Gladiator 541B, was one of our top selling yearling bulls in the Pursuit of Perfection Bull sale in 2015, going to Pam Hansen in South Dakota.

AI bred to Red Blair's Bingo 581B on April 29, 2016. Pasture exposed to Red Sunberry Private Stock 117B from May 15 to September 1, 2016. Preg checked safe to exposed breeding. Due late March.

23

BBC 22C

RED BLAIR'S Lass 22C

04/04/2015

1881341

RED HAYCOW CUTTING EDGE 055 LAFINS CUTTING EDGE 2075
RED HAYCOW 370 PRINCESS 5002

RED BLAIRS LASS103Z RED RINGSTEAD KARGO 215U
CARRUTHERS LASS 34L

BW	WW	YW	MM	TM
-0.3	51	74	21	46

Here's an ultra complete Cutting Edge daughter out of a Kargo x Rito 2100 that offers great maternal genetics. This female will mature into a perfect model cow with lots of femininity and an excellent udder. She's bred early to Red Blair's Bingo, a mating that should be exceptional.

AI bred to Red Blair's Bingo 581B on April 29, 2016. Pasture exposed to Red Sunberry Private Stock 117B from May 15 to September 1, 2016. Preg checked safe to AI breeding. . Due early February.

24

BBC 67C

RED BLAIR'S Marta 67C

17/04/2015

1881394

RED BAR-E-L AB JUDGE 5Y RED WHEEL ALLIANCE 22U
RED BAR-E-L MEG 85N

RED WRAZ MARTA 42Y RED SMW SMACK 31U
RED TOPLINE MARTA 807

BW	WW	YW	MM	TM
-1.9	53	79	24	51

The Martas are one of our favorite cow families and here's your opportunity to add an own daughter of Marta 42Y. This Judge daughter offers the same broody design and functionality as her superb dam. Bred early to U2 Renown.

AI bred to Red U-2 Renown 193C on April 29, 2016. Pasture exposed to Red Blairs Iron Hide 630B from May 15 to September 1, 2016. Preg checked safe to AI breeding. Due early February.

25

BBC 8C

25/03/2015

RED BLAIR'S *Rose* 8C
1935819RED WRIGHTS 832S IRON HIDE 4Z
RED SIX MILE SAKIC 832S
RED BWB FAYE 48N OF TRENDRED BLAIR'S ROSE 204Y
RED NBAR HAMLEY S913
RED JCC ROSE 60R

PE BW	WW	YW	MM	TM
-0.7	49	66	19	43

This solid made Iron Hide daughter features a neat pedigree with quality and consistency. Her dam is a excellent Hamley daughter out of the Rose 60R cow. Look her up on sale day.

AI bred to Red Blair's Bingo 581B on April 29, 2016. Pasture exposed to Red Sunberry Private Stock 117B from May 15 to September 1, 2016. Preg checked safe to exposed breeding. Due early March.



maternal grand dam RED JCC ROSE 60R

26

BBC 18C

04/02/2015

RED BLAIR'S *Miss Mulberry* 18C
1881301RED COCKBURN ENCORE 106Y
RED COCKBURN RIBEYE 308U
RED COCKBURN MS BOOT JACK 27NRED RRA MISS MULBERRY T82 120
RED NBAR HAMLEY S913
RED MFIN MULBERRY T82

BW	WW	YW	MM	TM
1.8	46	68	19	42

A super nice Encore daughter with a great pattern and lots of volume. She's moderate made and very easy fleshing. She is off a Hamley x Mulberry cow from the Rich Red Angus program in Iowa. Her Renown calf could be the ticket.

AI bred to Red U-2 Renown 193C on April 29, 2016. Pasture exposed to Red Blairs Iron Hide 630B from May 15 to September 1, 2016. Preg checked safe to AI breeding. Due early February.



service sire RED U-2 RENOWN 193C

27

BBC 51C

11/04/2015

RED BLAIR'S *Princess* 51C
1945160RED COCKBURN ENCORE 106Y
RED COCKBURN RIBEYE 308U
RED COCKBURN MS BOOT JACK 27NRED BLAIR'S PRINCESS 5Z
RED BLAIR'S DAYTONA 116U
RED RIVERDALE PRINCESS 120T

PE BW	WW	YW	MM	TM
1.6	59	88	21	50

Another Encore female with a lot of quality and moderation. Her grand dam, Princess 120T, is a leading cow in the Damar herd in Wisconsin. Her mating to Renown could be the perfect combination.

AI bred to Red U-2 Renown 193C on April 29, 2016. Pasture exposed to Red Blairs Iron Hide 630B from May 15 to September 1, 2016. Preg checked safe to AI breeding. Due early February.



maternal grand dam RED RIVERDALE PRINCESS 120T



Gloria 383C is a genetic piece that possesses many of the leading cow families from Six Mile. The Glorias are notorious for producing highly sought after offspring with a show ring presence to them. Adding Jagger to the mix injected a soft and efficient look to 383C. Jagger carries the maternal legend, Cheta 702W, in his lineage. It's safe to say that lot 28 is in strong maternal company.

Bred May 15 to PIE On the Mark
(favorable to this service).
Exposed from May 25 to July 1, 2016 to PIE On the Mark.



maternal grand dam RED SIX MILE GLORIA 746W

28

SIXM 383C

RED SIX MILE *Gloria* 383C
14/03/2015 1853585

RED SIX MILE & CO JAGGER 780A RED VGW GAME PLAN 816
RED SIX MILE CHETA 702W

RED SIX MILE GLORIA 229Z RED SIX MILE INTRIGUE 348X
RED SIX MILE GLORIA 746W

BW	WW	YW	MM	TM
0.3	65	95	17	50

29

SIXM 502C

RED SIX MILE *Ms Lako* 502C
28/03/2015 1853474

RED L83 SUPER DUTY 244Z RED SIX MILE KING RANCH 721W
RED L83 BERTHA 077

RED SIX MILE LAKO 368X RED SIX MILE SAKIC 832S
RED SIX MILE LAKO 727L

BW	WW	YW	MM	TM
-1.9	57	87	27	56



502C is the complete package. Another Super Duty daughter with the influence of Sakic. This heifer is just so phenotypically correct that you can't help take notice of her. She is bred to our "go to" calving ease sire, Game Face, who sired the two time Denver Grand champion, Taurus.

AI bred on May 15, 2016 to Red Six Mile Game Face 164Y (favorable to this service).
Exposed from May 29 to July 1 to OHR 87R Dakota Vic 74B.



service sire RED SIX MILE GAME FACE 164Y

This is the first female we have had the opportunity to sell sired by the two time Denver Grand Champion Bull - Taurus! Ruby Rose's dam is our donor female, 16P, who is the dam to the \$21,000 Fast Track bull that sold to Wheeler Stock Farm and Breed Creek Ranch. She is bred to the \$47,000 Reckoning bull whose progeny have been highly sought after.

AI bred on May 15, 2016 to Red U-2 Reckoning 149A (favorable to this service).
Exposed from May 20 to July 1, 2016 to Red U-2 Reckoning 149A.



dam RED SVR RUBY 16P



30

SIXM 168C

RED SIX MILE

Ruby Rose 168C

21/02/2015

1873028

RED SIX MILE TAURUS 519A

RED SIX MILE GAME FACE 164Y
RED SIX MILE SHAWNEE 116T

RED SVR RUBY 16P

RED YY RED KNIGHT 640F
RED LAMBS RUBY 85C

BW	WW	YW	MM	TM
-0.3	55	77	22	50

31

SIXM 226C

RED SIX MILE

Bridget 226C

27/02/2015

1853464

RED WEBR TOMAHAWK 1204

RED WEBR DOC HOLLIDAY 2N
PFFR MS NYACK 237

RED SIX MILE BRIDGET 330X

RED SIX MILE AVIATOR 217P
RED GRAHAM BRIDGET 529R

BW	WW	YW	MM	TM
-1.7	38	55	25	43

A female that is near impossible to fault on the profile, 226C represents the type of females we love from WEBR Tomahawk- gorgeous fronted, deep ribbed and excellent hair coat. The Tomahawk daughters in production display near perfect udder quality and exceptional milk production.

AI bred on May 22, 2016 to Red six Mile Game Face 164Y (favorable to this service).
Exposed from June 8 to July 1, 2016 to PIE On the Mark.



sire RED WEBR TOMAHAWK 1204





211C was raised by a first time dam who has become a real up and comer in our herd. Lot 32's dam, sired by Game Face, was purchased from the impressive L83 herd. This heifer is later maturing and extra correct in her skeletal build. Now - the most exciting thing - this female is bred to the exclusive, rare female making sire, Indeed! His last semen sold for over \$1000 a unit! Don't miss this genetic gem.

AI bred on May 30, 2016 to Red Towaw Indeed 104H (favorable to his service)
Exposed from June 14 to July 1, 2016 to PIE On the Mark



paternal sister **RED SIX MILE COUNTESS 152C**

32

RED SIX MILE *Barretta* 211C
SIXM 211C 26/02/2015 1924249

- RED U-2 RECKONING 149A
- RED U-2 RECON 192Y
RED U-2 ANEXA 271Y
- RED L83 BARRETT 24A
- RED SIX MILE GAME FACE 164Y
RED L83 BARRET 143

BW	WW	YW	MM	TM
-0.2	59	93	21	51

33

RED SIX MILE *Shawnee* 295C
SIXM 295C 04/03/2015 1853509

- RED SIX MILE & CO JAGGER 780A
- RED VGW GAME PLAN 816
RED SIX MILE CHETA 702W
- RED SIX MILE SHAWNEE 116T
- RED 5L NORSEMAN KING 2291
RED CROWFOOT SHAWNEE 9124J

BW	WW	YW	MM	TM
1.0	68	96	19	53



This is one special female that we should not let go! 295C represents the very first daughter out of Shawnee 116T to be offered at public auction. This makes her a maternal sister to the \$110,000 valued Taurus; the Accelerated sire Ruger; and the \$25,000 Genex sire, Winchester. This female shows many of the same traits as her mother in a slightly more moderate package. Find this heifer on sale day if you are in the business of making herd bulls.

AI bred on May 14, 2016 to Red U-2 Reckoning 149A.
Exposed from May 15 to July 1, 2016 to Red U-2 Reckoning149A (favorable to this service).Due to calve mid March.



dam **RED SIX MILE SHAWNEE 116T**

Here is a female with a different pedigree for us. She has an incredible numerical tabulation with EPD's in the top 10% of the breed for 10 traits. Her dam is a moderate unassuming female that simply out produces herself every time. This female is bred to the sought after sire, Signature. This service adds incredible value to an already incredible female.

AI bred on May 13, 2016 to Red Six Mile Signature 295B (Favorable to AI).
Exposed from May 25 to July 1, 2016 to PIE On the Mark



service sire **RED SIX MILE SIGNATURE 295B**



34

SIXM 162C

RED SIX MILE *Miss Extra* 162C

20/02/2015

1853573

RED FRITZ JUSTICE 8013 RED VGW JUSTICE 614
 RED FRITZ CHRIS 6047

RED SIX MILE MS EXTRA 206Z RED SIX MILE RAWHIDE 222X
 RED SIX MILE MS EXTRA 783W

BW	WW	YW	MM	TM
-2.5	68	102	26	60

35

SIXM 277C

RED SIX MILE *Countess* 277C

03/03/2015

1873036

RED SIX MILE TIMBERLINE 880W RED SIX MILE TIMBERLAKE 180T
 RED SIX MILE FLOWER 713S

RED SIX MILE COUNTESS 864W RED DURALTA SAMIVITE 201S
 RED SIX MILE COUNTESS 974N

BW	WW	YW	MM	TM
-2.0	47	63	14	38

This dark red beauty is sure to find a few friends on sale day. 277C is backed by a beautiful uddered momma cow and our now deceased calving ease specialist, Timberline. This female has been on our radar since early summer and she just keeps getting better. Her mating to Reckoning should pay early dividends for her new owner.

Ai bred on May 12, 2016 to Red U-2 Reckoning 149A (Favorable to this service).
Exposed from May 15 to July 1, 2016 to Red U-2 Reckoning 149A



sire **RED SIX MILE TIMBERLINE 880W**





36

RED SIX MILE *High Caliber* 177C
SIXM 177C 22/02/2015 1869534

RED SIX MILE TAURUS 519A

RED SIX MILE GAME FACE 164Y
RED SIX MILE SHAWNEE 116T

RED U6 ALANA 13X

BLACK WHEEL ODYSSEY 117U
RED U6 ALANA 65T

BW	WW	YW	MM	TM
0.5	61	84	28	51

High Caliber has stirred as much interest as any bull we have raised. His phenomenal hip shape, dark red color and sound skeletal structure has brought him to the attention of many top breeders. His dam is one of the most impressive mother cows in our herd. She is a CAA Elite dam that raised the \$39,000 high selling bred heifer in this sale last year – selling to Rivers Edge Cattle Co, and a maternal sister is working well in our herd.. To date only 25 units of semen have ever been released averaging almost \$600 a unit. High Caliber was just named the Farmfair Reserve Grand Champion Bull among a strong field of contenders.

Owned with Diamond T Cattle Co., Sunberry Valley Ranch & Viske Family Farm

LIMITED RELEASE SEMEN - There will only be 100 units of semen sold on this promising young sire in Canada, until November 2017 at the earliest. Semen is qualified for Canada or for export to the United States
Semen is stored at Bow Valley Genetics, AB and shipping costs are the responsibility of the buyer.

SELLING 70 UNITS OF SEMEN IN 10 UNIT PACKAGES



dam RED U6 ALANA 13X



maternal sister RED SIX MILE ALANA 300B



sire RED SIX MILE TAURUS 519A



37

DUA 149A

RED U-2 Reckoning 149A
19/01/2013 1763017

RED U-2 RECON 192Y

RED U2 MISSION 61W
RED U-2 LARKABA 8133U

RED U-2 ANEXA 271Y

RED HOWE MAGNUM 169W
RED U-2 ANEXA 333

BW	WW	YW	MM	TM
0.2	61	105	18	48

Reckoning is the highly sought after \$46,000 bull that has created quite a buzz with his first progeny. He exhibits style, bone mass and the ability to sire both bulls and heifers with exceptional potential. In only his first calf crop he sired numerous high selling bulls for both us and U-2 Ranch such as the \$102,000 Riff, the syndicated Renown, the \$30,000 Challenger and the feature SEMEX sire, Custom Made. Last year he sired our high selling heifer calf, Cresta 250C, who was also a division heifer calf champion at both Agribition and Denver. That same Reckoning daughter was just named Reserve Grand Champion Female at Louisville. Reckoning is the real deal and we predict the best is yet to come as his daughters move into production. Semen has been in limited release in the U.S. and it has NEVER been available in Canada. The semen offered here will be the very last semen sold in both Canada and the U.S until the fall of 2017 at the earliest. Owned with U-2 Ranch.

SELLING 70 UNITS OF CANADIAN OR U.S QUALIFIED SEMEN IN 10 UNIT PACKAGES. Semen is stored at Alta Genetics, AB and shipping is the responsibility of the buyer.



son RED SIX MILE CUSTOM MADE 505C



daughter RED SIX MILE MS CRESTA 250C



daughter RED SIX MILE CRESTA 250C
RESERVE GRAND CHAMPION FEMALE - LOUISVILLE 2016

EMBRYO LOTS



38

High Caliber 177C x Lassie 377P
PACKAGE OF THREE EMBRYOS

PE	BW	WW	YW	MM	TM
-1.4		46	61	30	49

The maternal powerhouse, Lassie, mated to the \$115,000 High Caliber will result in unlimited potential. *Three embryos with a guarantee of one pregnancy. Exportable anywhere in North America.*

RED SIX MILE HIGH CALIBER 177C

RED SIX MILE TAURUS 519A
RED U6 ALANA 13X

RED SIX MILE LASSIE 377P

RED TOWAW INDEED 104H
RED SILVERVIEW LASSIE 307C



39

Taurus 519A x Alana 13X
PACKAGE OF FOUR EMBRYOS

PE	BW	WW	YW	MM	TM
-1.1		48	68	28	51

These embryos are full siblings to our \$115,000 high selling bull, High Caliber. 13X is a premier donor cow and Taurus has proven himself in the show ring as well as in the pasture – siring high demand progeny. Six Mile & Niobrara Red Angus
Four embryos with a guarantee of two pregnancy. Exportable anywhere in North America.

RED SIX MILE TAURUS 519A

RED SIX MILE GAME FACE 164Y
RED SIX MILE SHAWNEE 116T

RED U6 ALANA 13X

BLACK WHEEL ODYSSEY 117U
RED U6 ALANA 65T



40

WarCraft 254Z x Shawnee 116T PACKAGE OF EMBRYOS

RED SIX MILE WARCRAFT 254Z RED SIX MILE TRAVELOCITY 318X
RED SIX MILE PRIDE 902S

RED SIX MILE SHAWNEE 116T RED 5L NORSEMAN KING 2291
RED CROWFOOT SHAWNEE 9124J

PE	BW	WW	YW	MM	TM
1.5		66	95	20	53

Shawnee is the CAA Elite dam of such sires as Taurus, Winchester and Ruger. WarCraft is a bull that we are extremely excited to introduce to the Red Angus world. His first daughter ever offered, Ms Pride 66D, recently sold for \$25,000 US.

Three embryos with a guarantee of one pregnancy. Exportable anywhere in North America.



41

Signature 295B x Lakoto 35W PACKAGE OF THREE EMBRYOS

RED SIX MILE SIGNATURE 295B RED SIX MILE GRAND SLAM 130Z
RED SELMA OF SIX MILE 358X

RED SIX MILE LAKOTO 35W RED LAZY MC SMASH 41N
RED STEWART LAKOTO 612S

PE	BW	WW	YW	MM	TM
0.9		60	93	27	57

Lakoto 35W is the dam of the \$65,000 Game Face and a \$30,000 heifer calf last year. We know this genetic combination with Signature is a sure thing because two sons from this mating will headline our 2017 bull sale. Watch for them.

Three embryos with a guarantee of one pregnancy. Exportable anywhere in North America.



42

Santana 73C x Kassie 129B
PACKAGE OF FOUR EMBRYOS

RED TER-RON SANTANA 73C	RED TER-RON PARKER 34A				
	RED TER-RON BRANDY 162Y				
RED BAR-E-L KASSIE 129B	RED BAR-E-L AB MAGIC MIKE 189Z				
	RED BAR-E-L KASSIE 117X				

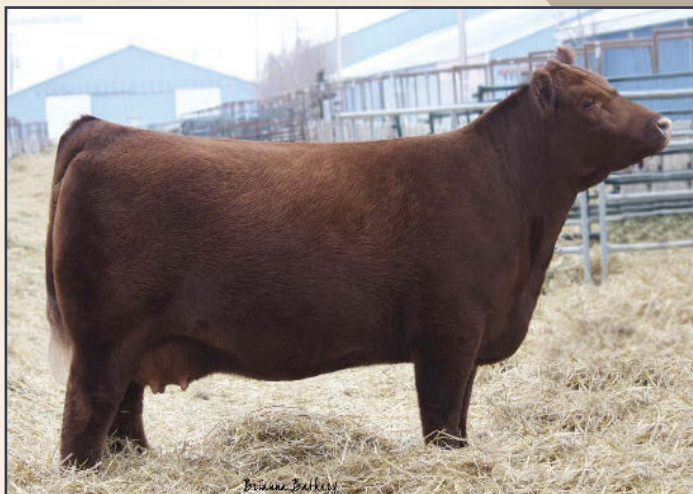
PE	BW	WW	YW	MM	TM
1.7	64	91	15	46	

Here's a grand opportunity to acquire an elite genetic package from the reigning National Western Grand Champion Female, Bar E-L Kassie. She was highly admired on the show road last year and is possibly even more impressive now as a two year old heifer. This mating is to Santana, our new Ter-Ron herdsire owned with Santiago Debernardi in Argentina. Watch for an updated picture of this young bull. He is developing into an ultra impressive herd bull that is excellent on his structure and solid throughout.

Offering four embryos with a guarantee of two pregnancies. All embryos are exportable within North America. Stored at Trans Ova Genetics, IA.



sire RED TER-RON SANTANA 73C



43

Signature 295B x Priscilla 44Z PACKAGE OF FOUR EMBRYOS

PE	BW	WW	YW	MM	TM
1.6		63	98	17	48

An exciting combination of two dark red genetic powerhouses that are widely recognized in North America. Signature is making his mark as a prepotent sire of phenomenal progeny. Priscilla 44Z is a daughter of 67W, that sells as Lot 3, and is championship caliber female for Baxter Blair, Double B Cattle. Owned with Double B Cattle Co.

Offering four embryos with a guarantee of two pregnancies. All embryos are exportable within North America. Stored at Trans Ova Genetics, IA.

RED SIX MILE SIGNATURE 295B
RED SIX MILE GRAND SLAM 130Z
RED SELMA OF SIX MILE 358X
RED BLAIRS PRISCILLA 44Z
RED RINGSTEAD KARGO 215U
RED BRYLOR PRISCILLA 67W



44

Kargo 215U x Martini 25W PACKAGE OF FOUR EMBRYOS

PE	BW	WW	YW	MM	TM
0.9		62	92	17	48

Martini is one of the most extraordinary phenotypic cows in the breed. This Mulberry daughter is flawless from every aspect. This mating to the super sire, Kargo, is guaranteed to be special. Blairs.Ag and Elite Beef Genetics.

Offering four embryos with a guarantee of two pregnancies. All embryos are exportable within North America. Stored at Trans Ova Genetics, IA.

RED RINGSTEAD KARGO 215U
RED RINGSTEAD KARGO 107M
RED RINGSTEAD MS EQUAL 589P
RED RED TIDE MARTINI 25W
RED FINE LINE MULBERRY 26P
RED JD LANN MARTA 130P

EMBRYO LOTS



45

Reckoning 149A x Baneberry 5238
PACKAGE OF FOUR EMBRYOS

RED U-2 RECKONING 149A

RED U-2 RECON 192Y
RED U-2 ANEXA 271Y

RED SOO LINE BANEERRY 5238

RED CRESCENT CREEK FRCHIEF 75L
RED SOO MS BANEERRY 3193

PE	BW	WW	YW	MM	TM
-1.4		55	86	19	47

We were fortunate to acquire one of the most impressive Soo Line donors from the Wildcat Creek dispersion. This female has done it all, including producing the World Forum Grand Champion Bull. Her mating to the Six Mile/U2 incredible sire, Reckoning, is an exciting combination. Owned with Niobrara Red Angus. Offering four embryos with a guarantee of two pregnancies. All embryos are exportable within North America. Stored at Trans Ova Genetics, IA.



46

Tommy Jack 166A x Copper Lady 8T
PACKAGE OF FOUR EMBRYOS

TWG TOMMY JACK 166A

SIX MILE GAME FACE 164Y
DAMAR PASSION X166

RED TOWAW COPPER LADY 8T

RED REDRICH NIGHT 14N
RED TOWAW COPPER LADY 107P

PE	BW	WW	YW	MM	TM
-0.7		46	68	16	-

An unique offering that features first class genetics that are new to Canada. Tommy Jack is the Blairs.Ag/Brylor/Timber Creek herd sire that greatly impresses all that have seen him. His first calves are hitting the ground now and they are awesome. This combination with Copper Queen 8T, that sells as Lot 5, has big time potential.

Offering four embryos with a guarantee of two pregnancies. All embryos are exportable within North America. Stored at Trans Ova Genetics, IA.



47

Signature 295B x Blackbird 107X PACKAGE OF FOUR EMBRYOS

RED SIX MILE SIGNATURE 295B RED SIX MILE GRAND SLAM 130Z
RED SELMA OF SIX MILE 358X

BLAIRS BLACKBIRD 107X

RED FINE LINE MULBERRY 26P
LLB BLACKBIRD 825U

PE	BW	WW	YW	MM	TM
1.0		67	111	20	53

Wow!! Can you imagine the outcome here?!!! Blackbird 107X is one of the most beautiful Black/Red Carrier cows that you will ever encounter and she produces as good as she looks. This exclusive mating to Signature could be something really special. Blairs.Ag and Niobrara Red Angus. Offering four embryos with a guarantee of two pregnancies. All embryos are exportable within North America. Stored at Trans Ova Genetics, IA.



48

Signature 295B x Della 309A PACKAGE OF FOUR EMBRYOS

RED SIX MILE SIGNATURE 295B RED SIX MILE GRAND SLAM 130Z
RED SELMA OF SIX MILE 358X

BLAIR'S DELLA 309A

LEE LATEST VERSION 0002
DBRL 4336 DELLA 285

PE	BW	WW	YW	MM	TM
3.3		53	88	19	45

Della is a high class individual that has drawn tremendous attention with her recent picture. This photogenic young female was a feature in the Class of '13 sale and has developed into a dream cow. Again, the mating to the exclusive and powerful Signature is almost automatic. Blairs.Ag and Mainstream Genetics. Offering four embryos with a guarantee of two pregnancies. All embryos are exportable within North America. Stored at Davis-Rairdan Embryo Transplants, AB

EMBRYO LOT



49a

Reckoning 149A x Gloria 195B
PACKAGE OF FOUR EMBRYOS

RED U-2 RECKONING 149A

RED U-2 RECON 192Y
RED U-2 ANEXA 271Y

RED SIX MILE GLORIA 195B

RED SIX MILE GAME FACE 164Y
RED SIX MILE GLORIA 361T

PE	BW	WW	YW	MM	TM
0.6		60	97	23	52

49b

Signature 295B x Gloria 195B
PACKAGE OF FOUR EMBRYOS

RED SIX MILE SIGNATURE 295B

RED SIX MILE GRAND SLAM 130Z
RED SELMA OF SIX MILE 358X

RED SIX MILE GLORIA 195B

RED SIX MILE GAME FACE 164Y
RED SIX MILE GLORIA 361T

PE	BW	WW	YW	MM	TM
1.5		64	101	23	54



sire RED U-2 RECKONING 149A



sire RED SIX MILE SIGNATURE 295B

Gloria is owned with Niobrara Red Angus and was recently crowned Grand Champion Female at the Manitoba Ag & Ex show. She has undeniable eye appeal, maternal power from the Gloria cow family and one of the neatest udders ever. Mated to the deep red powerhouse Signature is a sure thing, or if you choose, embryos can be full siblings to her fancy calf at side, sired by Reckoning - Buyers Choice.
Six Mile Ranch and Niobrara Red Angus

*Four Embryos -
Available no later than March 5, 2017*



50

HYB 169Z

RED BAR-E-L AB Meg 169Z
14/03/2012 1706853

RED TOWAW INDEED 104H

RED CC EXPANSION 5E
RED TOWAW MOLLY 67C

RED BAR-E-L MEG 85N

RED YY RED KNIGHT 640F
RED BAR-E-L MEG 035G

BW	WW	YW	MM	TM
0.5	56	77	20	48

We are very pleased to offer the right to flush this premier Red Angus female. We purchased a half interest in Meg out of the stall at 2014 Agribition. She went on to be Grand Champion Female at that event and made it into the top 10 in the RBC Supreme as a yearling heifer. She is sired by the immortal female maker, Indeed and her dam is one of the very best ever to come out of the impressive and powerful Bar E-L program. Meg 169Z has had the misfortune of having twins twice in a row; however she did an incredible job raising a foster calf, proving her production ability beyond a doubt.

Offering one flush to be done in April / May 2017. All flush costs are the responsibility of the buyer. Guaranteeing 6 number 1 implantable embryos and at least 2 sixty day pregnancies if at least 6 embryos are implanted. **All embryos produced in the flush up to 12 are the buyers. Embryos over 12 will be split with Six Mile with costs shared.**



agribition RED BAR-E-L AB MEG 169Z



pasture shot RED BAR-E-L AB MEG 169Z



dam RED BAR-E-L MEG 85N

EMBRYO
LOTS



51

Breakout 1310 x *Empress 3100*
PACKAGE OF THREE EMBRYOS

PE	BW	WW	YW	MM	TM
1.5		54	96	34	61

MAY-WAY BREAKOUT 1310

AVF BREAKOUT 5409
MAY-WAY LADY BANDO 086

OSU EMPRESS 3100

DAMERON FIRST IMPRESSION
OSU EMPRESS 0135

The two time Supreme Champion Female at the Toronto Royal Winter Fair mated to the Supreme Champion Bull at Agribition. Sounds like a winning combination to me!
Three embryos with a guarantee of one pregnancy. Exportable anywhere in North America.



52

GQ 2353 x *Blackbird 16X*
PACKAGE OF FOUR EMBRYOS

PE	BW	WW	YW	MM	TM
0.1		45	80	19	42

SILVEIRAS S SIS GQ 2353

SILVEIRAS STYLE 9303
K N C CABIN CREEK SANDY 804

SIX MILE BLACKBIRD 16X

S A V BISMARCK 5682
SIX MILE BLACKBIRD 864U

If we had to pick a favorite Black Angus female in our whole herd - 16X would be it! This complete female is as sound and correct as they come. She is an incredibly efficient female with perfect udder structure. The mating to the striking GQ bull should be an explosive mix.
Four embryos with a guarantee of two pregnancy. Exportable anywhere in North America.



53

Seedstock 4838 x Erica 74A

PACKAGE OF FOUR EMBRYOS

S A V SEEDSTOCK 4838

S A V REGISTRY 2831
S A V BLACKCAP MAY 4136

BAR-E-L ERICA 74A

BAR-E-L NATURAL LAW 52Y
HF ERICA 339T

Ultra Elite Genetics here!! Bar E-L Erica was the 2015 Canadian National Champion that was declared the World Champion last year. This prototype female is so exceptional in every way. This mating to SAV Seedstock could bring big time results. The Seedstock progeny are the talk of everyone that have seen them in the U.S. Owned with Blair's West.

Offering four embryos with a guarantee of two pregnancies. All embryos are exportable within North America. Stored at Trans Ova Genetics, IA.

PE BW	WW	YW	MM	TM
2.3	62	103	24	55



sire S A V SEEDSTOCK 4838



74A at agribition BAR-E-L ERICA 74A



pasture shot BAR-E-L ERICA 74A



54

NLC 508C

07/03/2015

NEXERA Lassie 508C

1945212

COLEMAN CHARLO 0256

O C C PAXTON 730P
BOHI ABIGALE 6014

DIAMOND T H.V. LASSIE 148'05

BLACK WHEEL ODYSSEY 2M
HILL VIEW LASSIE 7H

What a spectacular female!!! If you are looking for a future donor cow, you better analyze this powerhouse!! The Charlo progeny are impressing cattlemen across the United States, including Schaff Angus Valley that ran Charlo in their premier program this summer. Here's one of the best daughters. She's worthy of a plane ticket or drive to Regina! Owned with Nexera Land and Cattle.

Observed bred to U-2 Symmetry on May 25, 2016.

BW	WW	YW	MM	TM
1.3	42	72	24	45



sire **COLEMAN CHARLO 0256**



calf picture **NEXERA LASSIE 508C**



service sire **U-2 SYMMETRY**

Here's one of the top bred heifers in the pen. This broody Game Changer female is ultra complete with size, substance and style. She's a double bred Duff type with a shot of extension. Bred to calve early to our Senior Angus herdsire, Locomotive.

AI bred to Soo Line Locomotive 1403 on April 27, 2016. Pasture exposed to OSU Final Exam 3139 from May 12 to September 1, 2016. Preg checked safe to AI breeding. Due early February.



service sire **SOO LINE LOCOMOTIVE 1403**



55

BBC 316C

BLAIR's Grace 316C

02/04/2015

1881334

BNC GAME CHANGER 1Y VIN-MAR FOCUS IN 8847
NLC FATAL ATTRACTION 1W

BLAIRS GRACE 903Y DUFF NEW GENERATION 6107
PRIME TIME'S GRACE 911'99

BW	WW	YW	MM	TM
0.3	50	78	19	44

56

BBC 346C

BLAIR's Tilda 346C

11/04/2015

1881379

BNC GAME CHANGER 1Y VIN-MAR FOCUS IN 8847
NLC FATAL ATTRACTION 1W

JS TILDA 112 BUSHES SUPER TANKER 414
WILBAR TILDA 409S

BW	WW	YW	MM	TM
1.8	46	84	21	44

A superb Game Changer female that you'll really like. She's really a model female with size, scale, capacity and balance. The Game Changer x Locomotive should be the right genetic combination.

AI bred to Soo Line Locomotive 1403 on April 27, 2016. Pasture exposed to OSU Final Exam 3139 from May 12 to September 1, 2016. Preg checked safe to AI breeding. Due early February.



sire **BNC GAME CHANGER 1Y**





57

BBC 308C

29/03/2015

BLAIR'S Ruby 308C
1945846

BNC GAME CHANGER 1Y

VIN-MAR FOCUS IN 8847
NLC FATAL ATTRACTION 1W

JL RUBY 8056

JUSTAMERE 253 BADA BING 406S
ROYAL RUBY DRCC 2091M

PE BW	WW	YW	MM	TM
1.5	41	79	24	44

A really nice designed, moderate made Game Changer female that will catch your attention. Her productive dam is by the popular Justamere herdsire, Bada Bing and goes back to Bando 5175 on the bottom side. Owned with Craig and Chara Blair

AI bred to HF Kodiak 5R on April 27, 2016. Pasture exposed to OSU Final Exam 3139 from May 12 to September 1, 2016. Preg checked safe to exposed breeding. Due early March.



58

BBC 354C

15/04/2015

BLAIR'S Heroine 354C
1881392

BNC GAME CHANGER 1Y

VIN-MAR FOCUS IN 8847
NLC FATAL ATTRACTION 1W

MVF HEROINE 163U

S A V NET WORTH 4200
MVF HEROINE 19P

BW	WW	YW	MM	TM
4.3	49	86	26	51

The combination of Game Changer and Net Worth really worked here. Take a look at this gal's video. She's sharp looking, extremely long made and will make a top notch brood cow. Bred to our calving ease sire, Final Exam.

AI bred to HF Kodiak 5R on April 27, 2016. Pasture exposed to OSU Final Exam 3139 from May 12 to September 1, 2016. Preg checked safe to exposed breeding. Due early March.

service sire OSU FINAL EXAM 3139



59

BBC 543C

03/02/2015

BLAIR'S Evening Tinge 543C
1944383

SOO LINE LOCOMOTIVE 1403

SOO LINE MOTIVE 9016
SHADY BROOK EVERENTENSE 2039

BLAIR'S EVENING TINGE 227Z

SOO LINE LEGACY 7019
GEIS EVENING TINGE 153'02

PE BW	WW	YW	MM	TM
2.0	49	79	25	50

Here's the only Locomotive female in the sale and she's a female you need to consider. She has tremendous length and extension with excellent rib shape and volume. Excellent structural makeup too. She'll calve early to Game Changer, an exciting combination.

AI bred to BNC Game Changer 1Y on April 27, 2016. Pasture exposed to U-2 Symmetry 197C from May 12 to September 1, 2016. Preg checked safe to AI breeding. Due early February.

60

BBC 515C

BLAIR'S Blackbird 515C
 20/01/2015 1884475

HF KODIAK 5R

 SANDY BAR ADVANTAGE 43M
 WILBAR RUBY 955N

RUDOW'S BLACKBIRD 131

 DUFF NEW EDITION 6108
 RUDOW'S 709

PE BW	WW	YW	MM	TM
0.2	44	77	16	38

This super Kodiak ET female is definitely at the top of the list. We missed the picture of her, but she'll impress you in person and on video. She is extremely complete with lots of body and dimension. Her New Edition dam is one of our favorites from the U.S. and has been very productive.

AI bred to BNC Game Changer 1Y on April 27, 2016. Pasture exposed to OSU Final Exam 3139 from May 12 to September 1, 2016. Preg checked safe to exposed breeding. Due late March.



maternal grand sire DUFF NEW EDITION 6108

61

BBC 331C

BLAIR'S Tibbie 331C
 08/04/2015 1883749

HF KODIAK 5R

 SANDY BAR ADVANTAGE 43M
 WILBAR RUBY 955N

MVF TIBBIE 25N

 BON VIEW NEW DESIGN 878
 BXB FIRST DATE 208L

BW	WW	YW	MM	TM
0.8	45	85	22	45

The combination of Kodiak and 25N has yielded a solid group of ET progeny that have made the sale year after year. This excellent female will go on and make a fantastic cow for your program. Check out her maternal sister that was one of our top sellers in the first Genetic Focus sale.

AI bred to BNC Game Changer 1Y on April 27, 2016. Pasture exposed to OSU Final Exam 3139 from May 12 to September 1, 2016. Preg checked safe to AI breeding. Due early February.



maternal sister, a sale topper in 2015 BLAIR'S TIBBIE 444A

62

BBC 325C

BLAIR'S Tibbie 325C
 05/04/2015 1881348

HF KODIAK 5R

 SANDY BAR ADVANTAGE 43M
 WILBAR RUBY 955N

ERICA OF CHALCO 18X

 HF KODIAK 214T
 ERICA OF RANNOCH 100J

PE BW	WW	YW	MM	TM
0.7	43	74	11	33

A top notch Kodiak daughter that is line bred for quality and consistency. You can't go wrong adding this strong female to your herd.

AI bred to BNC Game Changer 1Y on April 27, 2016. Pasture exposed to OSU Final Exam 3139 from May 12 to September 1, 2016. Preg checked safe to exposed breeding. Due late March.



sire HF KODIAK 5R



63a

SIXM 445C

RED SIX MILE *Olympia* 445C
19/03/2015 1853494

RED HCG BRANDING IRON

RED HXC BIG IRON 0024X
RED HXC JAYLO LB136

RED SIX MILE OLYMPIA 39Z

RED SIX MILE WILD WEST 0913W
RED STEWART OWYHEE 605S

BW	WW	YW	MM	TM
1.2	81	129	20	60

445C represents the first Branding Iron daughter to sell in Canada. We added Branding Iron to our herd bull battery for his chart topping growth and carcass numbers. This bred female is backed by a beautiful Wild West daughter who won her division at the NWSS as a heifer calf. We love the extension and mass in 445C and think her mating with the \$ 47,000 Reckoning should be a home run. 445C is offered as a choice with her maternal sister, Lot 63b.

AI bred on May 27, 2016 to Red U-2 Reckoning 149A (favorable to this service).
Exposed from June 11 to July 1, 2016 to PIE On the Mark.



sire **RED HCG BRANDING IRON**



RED SIX MILE OLYMPIA 445C



service sire **RED U-2 RECKONING 149A**

It's difficult to write a footnote on a heifer that brings so many attributes to the table in such a unique package. 194D has all the right tools - Ultra slim neck, robust in her rib cage and stout structured, this Mulberry daughter is sure to sort her way to the top. Deciding between these two maternal sisters may be the only question with no wrong answer.



sire **RED FINE LINE MULBERRY 26P**



63b

SIXM 194D

RED SIX MILE Olympia 194D
26/02/2016 1931956

RED FINE LINE MULBERRY 26P

RED COMPASS MULBERRY 449M
RED DUS FAYETTE 8G

RED SIX MILE OLYMPIA 39Z

RED SIX MILE WILD WEST 0913W
RED STEWART OWYHEE 605S

BW	WW	YW	MM	TM
1.5	74	107	21	56

64

SIXM 100D

RED SIX MILE Berry 100D
20/02/2016 1924890

RED SIX MILE ANCHORMAN 743A

RED BJR BRAVEHEART 3H
RED SIX MILE LASSIE 377P

RED SIX MILE BERRY 545X

RED 6 MILE FULL THROTTLE 171T
RED SIX MILE BERRY 609R

BW	WW	YW	MM	TM
-0.3	50	72	16	56

Phenotypically, this heifer has been a favorite of ours since early in the summer. She carries an elegant font end, extra rib dimension and a hair coat that would make a Shorthorn breeder jealous. Her sire, Anchorman, is a bull we kept for his maternal genetic worth combining Lassie 377P and Braveheart 3H. Be sure to find this beauty on sale day.



paternal granddam **RED SIX MILE LASSIE 377P**





65a

RED SIX MILE Larkaba Lass 22D

SIXM 22D

10/02/2016

1924886

RED SIX MILE WARCRAFT 254Z

RED SIX MILE TRAVELOCITY 318X
RED SIX MILE PRIDE 902

RED GLY LARKABA LASSIE 111T

RED FINE LINE MULBERRY 26P
RED GLY LARKABA LASSIE 11N

BW	WW	YW	MM	TM
-1.0	57	86	15	43

When T Bar stopped in to go through sale cattle, I think they may have missed the rest of the heifer calves because they spent the whole time drooling over 22D. Her sire Warcraft (who stacks Sakic and Indeed in his pedigree) is quickly becoming a household name for Red Angus breeders as he produces stock that are made right for the times. Her dam has been a very consistent producer for us with two daughters working in our herd. Females of this caliber don't go through a sale ring every year. Dare we say - she is one of the best heifer calves we have ever raised.

CHOICE BETWEEN WARCRAFT DAUGHTERS OR A HALF INTEREST IN BOTH: Six Mile retains the right to at least 10 embryos in the future on the chosen female at our expense and the buyers convenience.



sire **RED SIX MILE WARCRAFT 254Z**



paternal grand dam **RED SIX MILE PRIDE 902S**



sister, \$25,000 WarCraft daughter
RED SIX MILE MS PRIDE 66D



65b

SIXM 256D

RED SIX MILE *Red Rosie 256D*
03/03/2016 1924911

RED SIX MILE WARCRAFT 254Z

RED SIX MILE TRAVELOCITY 318X
RED SIX MILE PRIDE 902S

RED SIX MILE ROSIE 34W

RED U-2 BIG LEAGUE 7136T
RED ROSE KKL 506R

BW	WW	YW	MM	TM
0.3	55	80	20	48

Red Rosie was one of our beloved heifer calves since we sorted for breeding pastures way back in May. She had many fans that stopped by Six Mile in the summer time as well. They loved her shape and her correctness. But when we got her in for halter breaking, she had other ideas... The process set her back a bit, but we did eventually convince her that she NEEDED to be a show heifer! 256D offers a balanced EPD profile and is backed by a refined mother with a proven track record. Offered as a choice lot with her paternal sister Lot 65a.

CHOICE BETWEEN WARCRAFT DAUGHTERS OR A HALF INTEREST IN BOTH: Six Mile retains the right to at least 10 embryos in the future on the chosen female at our expense and the buyers convenience.



sire RED SIX MILE WARCRAFT 254Z



maternal brother RED SIX MILE BUTCH 1338B



maternal grand sire RED U-2 BIG LEAGUE 7136T

~ CHOICE OF WARCRAFT DAUGHTERS ~ 22D & 256D ~



66

BBC 502D

RED BLAIR'S RUST *Larkaba 502D*
20/01/2016 1940703

RED SIX MILE SIGNATURE 295B

RED SIX MILE GRAND SLAM 130Z
RED SELMA OF SIX MILE 358X

RED BLAIR'S LARKABA 17T

RED SOUTHLAND ENERGIZER 100R
RED BAR-E-L LARKABA 23R

One hundred superlatives don't do this heifer justice. Just check out her picture and that's all you need to realize the magnitude of quality displayed by this championship caliber individual. The genetics represented only enhance her value. Her dam was one of the top sellers in the first Genetic Focus Sale and her sire, Signature, is one the best to emerge recently in the Red Angus circles.
Owned with Rust Mountain View Ranch

PE BW	WW	YW	MM	TM
0.8	46	73	19	42



sire **RED SIX MILE SIGNATURE 295B**



dam **RED BLAIR'S LARKABA 17T**



great grand son of **17T BACKROAD**



67

BBC 585D

RED BLAIR'S Yankee 585D

09/03/2016

1946730

RED RINGSTEAD KARGO 215U

RED RINGSTEAD KARGO 107M
RED RINGSTEAD MS EQUAL 589P

RED WSF MS YANKEE 13T 12W

RED BRYLOR/WSP KARWEIK 1P
RED FINE LINE YANKEE 13T

Check out this fabulous female with a prestigious pedigree. Yankee 585D is one of the best heifers ever produced at Blairs.Ag. She is the only available sister to the emerging star, Bingo, and her full sister was also purchased by Power+Plus Genetics in OK. Her dam, Yankee 12W, is one of the most productive donors in the herd. This elite show stopper has an impeccable design, incredible dimension and best of all, has the proven genetic capability to continue to improve and develop into a superstar!

PE BW	WW	YW	MM	TM
1.2	60	87	14	44



full brother **RED BLAIR'S BINGO 581B**



dam **RED WSF MS YANKEE 13T 12W**



full sister **RED BLAIR'S YANKEE 28B**



68

BBC 565D

RED BLAIR'S Priscilla 565D
29/02/2016 PENDING

We have had several inquiries for a full sister to Baxter Blair's dynamic donor and championship female, Priscilla 44Z, so here she is. She features the same type, style and quality of her famous sister. She's dark red, big bodied, stout made and has the brood cow look. There's no doubt that Priscilla 565D will follow the footsteps of her genuine bloodlines and she will be a female that will be a valuable asset to any kind of program. Don't miss out here.

RED RINGSTEAD KARGO 215U RED RINGSTEAD KARGO 107M
RED RINGSTEAD MS EQUAL 589P

RED BRYLOR PRISCILLA 67W RED BRYLOR SDL RICHTER 212R
RED BRYLOR PRISCILLA 304S

PE BW	WW	YW	MM	TM
1.9	59	87	16	46



full sister RED BLAIR'S PRICILLA 44Z



dam RED BRYLOR PRISCILLA 67W



full sister RED BLAIRS PRISCILLA 44Z

Berry 507D has attracted a lot of attention since she hit the ground. She has a dynamite design with great substance and correctness. This is one of the first Bingo daughters to be available at auction. Bingo was the top seller in the Blairs.Ag bull sale in 2015 selling for \$55,000 for half interest to Power+Plus Genetics, OK. She's hard to part with.



sire **RED BLAIR'S BINGO 581B**



69

BBC 507D

RED BLAIR'S Berry 507D

02/02/2016

1935734

RED BLAIR'S BINGO 581B

RED RINGSTEAD KARGO 215U
RED WSF MS YANKEE 13T 12W

RED BLAIR'S BERRY 25B

RED COCKBURN ENCORE 106Y
RED JAS BERRY 67U

BW	WW	YW	MM	TM
1.0	59	87	14	44

70

BBC 563D

RED BLAIR'S Nice 563D

29/02/2016

1929524

RED SIX MILE SIGNATURE 295B

RED SIX MILE GRAND SLAM 130Z
RED SELMA OF SIX MILE 358X

RED BLAIRS NICE 25Y

RED WILBAR LATITUDE 235W
RED JB WANNABE NICE 9084

BW	WW	YW	MM	TM
0.3	59	89	13	42

Take a look at this outstanding Signature daughter. She's extra nice! She has the look, dimension and femininity to make a superb show heifer and donor cow. Her dam is a powerful, big bodied daughter of Latitude. Tremendous potential here. Owned with Gary Thiessen.



dam **RED BLAIRS NICE 25Y**





This is one that really should not be for sale. This March heifer calf is an easy doing, easy going daughter of the Kargo bull that our sale partners, Blairs, hold in great esteem. The pedigree on this female is unique with outcross blood coming from her Wild Card dam. This heifer calf has the phenotype and the efficiency that already made her a Champion, recently winning Reserve Junior Heifer Calf Champion at Farmfair 2016.



reserve champion junior heifer calf **RED SIX MILE LADY INATEX 219D**

71

RED SIX MILE Lady Inatex 219D
 SIXM 219D 01/03/2016 1940220

RED RINGSTEAD KARGO 215U RED RINGSTEAD KARGO 107M
 RED RINGSTEAD MS EQUAL 589P

RED SIX MILE INATEX 750A RED SOO LINE WILDCARD 7052
 RED MEM INATEX 135

BW	WW	YW	MM	TM
2.5	66	86	17	48

72

RED SIX MILE Miss Dynamo 189D
 SIXM 189D 26/02/2016 1943524

RED AHL FLASHBACK 446B RED PZC TMAS FIRESTORM 1800 ET
 RED AHL DUCHESS 42W

RED SIX MILE MISS DYNAMO 179Y RED 5L NORSEMAN KING 2291
 RED SIX MILE MS DYNAMO 833W

BW	WW	YW	MM	TM
0.8	52	77	23	49



This Flashback daughter is the definition of broody. She is massive ribbed and tanky. Her maternal sister, Lot 19b, 172C, offers the same easy keeping look as 189D. Flashback is the Firestorm son that Ledoux's sold for \$105,000 in the 2015 Western Heritage Sale in Denver, CO. We were able to land the Canadian semen rights with Rainbow Red Angus and we are excited with how well he worked in our cow herd. Ms Dynamo is already a Champion being crowned Reserve Heifer Calf Champion at the Manitoba Ag/EX.



reserve heifer calf champion **RED SIX MILE MISS DYNAMO 189D**

A quality female with a truly unique pedigree behind her. 231D is sired by Peak Dot Eliminator 100Z, a sire we added to our bull battery for his outcross lineage and impressive numerical profile. Her dam is a youthful Predominant daughter with an exceptional udder. Goldie is a female that checks all the boxes with unlimited genetic potential.



sire **PEAK DOT ELIMINATOR 100Z**



73

SIXM 231D

RED SIX MILE Goldie 231D
01/03/2016 1924910

PEAK DOT ELIMINATOR 100Z S A V ELIMINATOR 9105
ERICA OF PEAK DOT 730T

RED GOLDIE OF SIX MILE 360X RED PEAK DOT PREDOMINANT 77U
RED SIX MILE GOLDIE 211T

BW	WW	YW	MM	TM
1.3	59	96	16	43

74

SIXM 131D

RED SIX MILE Belle 131D
22/02/2016 1925268

RED SIX MILE GAME FACE 164Y RED VGW GAME PLAN 816
RED SIX MILE LAKOTO 35

RED SIX MILE BELLE 426B RED MRLA NEW ERA 87Y
RED SIX MILE BELLE 458R

BW	WW	YW	MM	TM
-0.9	53	78	19	45

If you like to analyze cattle from the ground up, I urge you to take a good look at Belle 131D. She stands as wide and as true as you can make one in the Red Angus breed. Her New Era mother knocked it out of the park on her first crack at motherhood, producing this big footed, loose hided Game Face daughter. Adding to her value is her consistent EPD profile.



maternal grand dam **RED SIX MILE BELLE 458R**





This incredible Bingo daughter is one to mark down. She is powerfully built, great bodied and has a real maternal look. She's very solid and ultra complete. Her dam is an outstanding Mulberry daughter that sells as Lot 6.



dam RED TFCC DOLL 202Z

75

BBC 523D

RED BLAIR'S Doll 523D

11/02/2016

1929517

RED BLAIR'S BINGO 581B

RED RINGSTEAD KARGO 215U
RED WSF MS YANKEE 13T 12W

RED TFCC DOLL 202Z

RED FINE LINE MULBERRY 26P
RED THREE FIRES DEUCES DOLL601

BW	WW	YW	MM	TM
0.7	59	84	15	44

76

BBC 572D

RED BLAIR'S Monique 572D

03/03/2016

1929528

RED BLAIR'S BINGO 581B

RED RINGSTEAD KARGO 215U
RED WSF MS YANKEE 13T 12W

RED BLAIR'S MONIQUE 175A

RED HAYCOW CUTTING EDGE 055
RED TOWAW MONIQUE 2K

BW	WW	YW	MM	TM
-0.7	62	94	24	55



A beautiful Bingo prospect that features a power packed pedigree. Notice that she goes back to the impressive dam of the popular sire, Stout. This heifer's dam was one of the top sellers in the first Genetic Focus Sale going to Goondoola Red Angus in Australia. This heifer has it all!

Owned with Goondoola Red Angus



dam RED BLAIR'S MONIQUE 175A

The Megs are from one of the most popular and powerful cow families at Bar E-L. This super fancy Legacy heifer calf displays the same extreme quality and fantastic phenotype that the Megs as known for. Check out the her maternal sister, Meg 169Z, in the genetic section of this catalog. Tremendous potential here.



maternal sister **RED BAR-E-L AB MEG 169Z**



77

RED BLAIR's Meg 12D
BBC 12D 02/04/2016 1941238

RED WPRA LEGACY A-314 **RED LAZY MC EYE SPY 64Y**
RED WPRA EVERLEDA ENTENSE 610

RED BAR-E-L MEG 85N **RED YY RED KNIGHT 640F**
RED BAR-E-L MEG 035G

PE BW	WW	YW	MM	TM
1.0	62	89	18	48

78

RED BLAIR's Nolen 17D
BBC 17D 05/04/2016 1938362

RED SOO LINE POWER EYE 161X **RED COCKBURN RIBEYE 308U**
RED TR LYNN 301R

RED RX LADY NOLEN Y114 **RED BIEBER MAKE MIMI 7249**
RED RX LADY NOLEN W142

PE BW	WW	YW	MM	TM
-0.8	63	103	19	50

This super sharp individual is a full sister to Red Blair's Pure Power, the high selling bull and calf champion at the National Western in 2015. Check out the pizzaz and power that she exhibits. Her dam is a future superstar in our ET program. The Power Eyes are a hot commodity. Here's your opportunity to buy one of the best.



dam **RED RX LADY NOLEN Y114**





Pride 590D is our youngest red heifer in the sale but definitely no slouch in quality. Dark red, super feminine head and neck with plenty of belly and substance. She stems from the big time Pride cow family that produced Warcraft 254Z. She is off a first calving Ruger daughter that is a bit larger in her outline and very correct in her design.



paternal sister **RED SIX MILE QUEEN 117B**

79

SIXM 590D

RED SIX MILE *Ms* Pride 590D
 04/04/2016 1940225

RED SIX MILE RAWHIDE 222X RED LAZY MC SMASH 41N
 RED YY TAFFETA 306N

RED SIX MILE PRIDE 614B RED SIX MILE RUGER 221X
 RED PTTV PRIDE 17'03

BW	WW	YW	MM	TM
-2.2	53	76	18	45

80

SIXM 335D

RED SIX MILE *Ms* Shawnee 335D
 10/03/2016 1942851

RED U-2 RECKONING 149A RED U-2 RECON 192Y
 RED U-2 ANEXA 271Y

RED SIX MILE SHAWNEE 116T RED 5L NORSEMAN KING 2291
 RED CROWFOOT SHAWNEE 9124J

BW	WW	YW	MM	TM
1.0	62	95	19	50



This March heifer is a genetic gold mine. On the top side of her pedigree you find U-2 Reckoning, a sire that created a big stir in the breed. And on the bottom, Shawnee 116T needs no introduction after producing greats such as Winchester, Ruger and Taurus. 335C may be a little later in her maturity pattern but we feel she has the pieces to follow in her momma's footsteps down the road.



dam **RED SIX MILE SHAWNEE 116T**

This Complete heifer is a sweetheart. By far the easiest heifer to halter break and maintains an easy going personality and is just a dream when you put a show stick on her. All her extras start stacking up when you look at her on the profile. Level topped, smooth shouldered and the great hair coat that Complete puts on nearly every offspring.



sire CONNEALY COMPLETE 8454



81

SIXM 178D

SIX MILE *Darkstar* 178D

25/02/2016

1924901

CONNEALY COMPLETE 8454 SUMMITCREST COMPLETE 1P55
BLACK BEARA OF CONANGA 8454

ROSE HILL DARKSTAR 7T ROSE HILL ROYCE 8N
ROSE HILL DARK STAR 22P

BW	WW	YW	MM	TM
-0.5	48	78	27	53

82

SIXM 141D

RED SIX MILE *Enchantment* 141D

22/02/2016

1925301

SIX MILE BULL DURHAM 245B SANKEYS JUSTIFIED 101
SIX MILE BLACKBIRD 864U

C&C MISS ENCHANTMENT 2031 EXAR WANTED 9732B
EXAR MISS ENCHANTMENT 805

BW	WW	YW	MM	TM
1.2	43	80	20	42

The first heifer calf to sell from Bull Durham, our high selling Justified son that was purchased by HBH Farms and Ray and Barb Airey of Rivers, Manitoba. 141D is a fancy made prospect that stems from a female we purchased from Shane Michelson. 2031Z is a youthful type of female that brings home a stellar calf every year.



paternal grand dam SIX MILE BLACKBIRD 864U





83a

SIXM 517A

SIX MILE Lassie 517A

13/02/2013

1736825

CONNEALY COMPLETE 8454

SUMMITCREST COMPLETE 1P55
BLACK BEARA OF CONANGA 8454

LASSIE OF PEAK DOT 703T

S A V 004 PREDOMINANT 4438
LASSIE OF PEAK DOT 406J

BW	WW	YW	MM	TM
2.3	63	99	29	61

When we purchased Complete from the Connealy Bull Sale in 2012, we never would have dreamt of the impact he would have on our Black Angus program. His females now anchor our herd with perfect udders and his bulls creep up the sale order in April. Lassie may not be in "fat donor cow" condition, but when you examine the firecracker of a heifer calf at foot, you appreciate her production ability. Her genuine skeletal construction and exceptional growth and maternal EPDs make her one to check out. Topping it all off -she is bred to the reigning RBC Supreme Champion Bull - Breakout. This off age bull was a standout then and wait till you see him now!

AI bred to May-Way Breakout 1310

Exposure May 26 to July 5 May Way Breakout 1310. Due mid March.



service sire MAY WAY BREAKOUT 1310



as a calf SIX MILE LASSIE 517A



sire CONNEALY COMPLETE 8454

Just an end of March baby that loves to show off. 461D possesses one of the most powerful hip and hind legs you could put on a heifer calf. The Reflection calves come easy and grow like weeds; he also throws a bit of moderation and a great foot under them. Check out her numeric tabulations: top 10% in WW, YW, MA, TM, CEM and CW. She is offered as a choice with her dam, as we can only afford to give up one of these Lassie females.



dam SIX MILE LASSIE 517A



83b

SIXM 461D

23/03/2016

1925309

SIX MILE Lassie 461D

ANDERSON REFLECTION 1341

MCATL REFLECTION 120-577
ANDERSON BARB ROSE 4210

SIX MILE LASSIE 517A

CONNELLY COMPLETE 8454
LASSIE OF PEAK DOT 703T

BW	WW	YW	MM	TM
2.0	67	103	28	61

This heifer was a late addition to the show and sale squad and, despite her April birth date, she fits right in. The Beauty cow family is known for their power and exceptional growth traits- a 0.9 to 105 BW to YW spread! 618D's mother was alongside the National Champion Female and RBC Top 10 Finalist in 2011. Her sire, Crossfire, was our pick from the 2015 Bar-H Bull Sale and his calves have sorted their way to the top of our bull and heifer pens. We own this heifer as well as her dam and grand dam with our friends and sale partners, Blair.Ag, and are proud to offer her here today.



maternal grand dam SIX MILE REAL BEAUTY 803U

84

SIXM 618D

09/04/2016

1943569

SIX MILE BLAIR's Beauty 618D

BAR-H CROSSFIRE 63A

S TITLEST 1145
HF TIBBIE 93U

SIX MILE BEYOND BEAUTY 124Y

VIN-MAR FOCUS IN 8847
SIX MILE REAL BEAUTY 803U

BW	WW	YW	MM	TM
1.3	71	117	29	65





85

BBC 549D

25/02/2016

BLAIR'S Lady 549D
1946713

Definitely one of the most impressive Black heifer calves from the Blairs.Ag program in 2016. This extra fancy, ultra complete female is super balanced, sharp made and very correct. She displays great body dimension and natural width throughout. Her sire, Duff New Attraction, was widely known for producing tremendous style and eye appeal in a moderate package. Her dam, 71L, was a mainstay in the Black donor lineup. Big time potential and future in this heifer.

DUFF NEW ATTRACTION 6110

O C C GENESIS 872G
O C C DIXIE ERICA 814G

MVF PRIDE LADY 71L

GDAR SVF TRAVELER 228D
SKY WEST PRIDE LADY 45J

PE BW	WW	YW	MM	TM
3.4	35	57	19	37



paternal brother **LEE'S LATEST VERSION**



sire **DUFF NEW ATTRACTION 6110**



paternal sister **NLC FATAL ATTRACTION 1W**

This outstanding heifer calf will have lots of friends on sale day. She has ultimate style with perfect body shape and dimension. She's great in her lines and great on her feet and legs. Her sire is doing a tremendous job as our calving ease Angus sire for heifers. Make sure to take a look at this one.



sire **OSU FINAL EXAM 3139**



86

BLAIR'S Pride 505D
 BBC 505D 01/02/2016 1929371

OSU FINAL EXAM 3139 S A V FINAL ANSWER 0035
 OSU EMPRESS 1105

BLAIR'S PRIDE 202B HF KODIAK 5R
 DWAJO PRIDE 44P

PE BW	WW	YW	MM	TM
1.5	46	79	19	42

87

BLAIR'S Attraction 574D
 BBC 574D 04/03/2016 APPLIED FOR

SILVEIRAS S SIS GQ 2353 SILVEIRAS STYLE 9303
 K N C CABIN CREEK SANDY 804

NLC FATAL ATTRACTION 1W DUFF NEW ATTRACTION 6110
 DOUBLE AA BELLA 31'05

PE BW	WW	YW	MM	TM
2.9	36	64	21	48

This ultra attractive heifer offers an unique pedigree with quality, consistency and power. This daughter of the fantastic donor, Fatal Attraction 1W, Lot 11, is sired by the popular U.S. bull, GQ. She features phenotypic quality and different genetics in a high class package.



sire **SILVEIRAS S SIS GQ 2353**



NOTES PAGE...



SIX MILE

6M Ranch Ltd.



Six Mile Ranch

43rd Annual Bull Sale

Saturday, April 8, 2017 | At the Ranch, Fir Mountain, SK

Offering 150 Rugged Ranch Raised Red & Black Angus Bulls

*"from a program that has produced breed leaders
Sakic, Signature, Taurus, Game Face, High Caliber and many more"*

Six Mile proudly hosts the "Range Royalty"

Commercial Bred Heifer Sale

Monday, December 5, 2016 | Heartland Livestock, Swift Current, SK

Offering 350 outstanding Angus Influenced Bred Heifers
from the top of our herd and the herds of our progressive customers

BLAIRS.AG CATTLE CO.

The Pursuit of Excellence Bull Sale

*100 Red and Black Angus Bulls sell
majority two year old bulls*

April 4, 2017
Jackson Cattle Co.
Sales Facility,
Sedley, Saskatchewan



Blairs.Ag Influence

Commercial Heifer Sale

December 13, 2016,
Johnstones Auction, Moose Jaw, SK

300 Red and Black Angus females sell
from our partners:

TJ Farms Blairs West
Hummock Springs Ranch Center Fork Ranch
Blairs.Ag

Return Undeliverable
Canadian Addresses To:

T Bar C Cattle Co. Ltd.
4-3342 Millar Avenue
Saskatoon, SK S7K 7G9



Catalogue created by

TODAY'S
PUBLISHING