

Pursuit of **EXCELLENCE** **BULL SALE '12**

Jackson Cattle Co. Sale Facility • Sedley • Saskatchewan

APRIL 3 • 2012



 **Blairs.Ag**
CATTLE COMPANY

Guest Consignors:

MICHELSON LAND AND CATTLE, KENBERT ACRES,
NEXERA LAND AND CATTLE, MAINSTREAM GENETICS
JACKSON CATTLE CO, ROCKING S RANCH

Pursuit of **EXCELLENCE**

WELCOME TO THE SALE

Welcome to the Pursuit of Excellence '12 Bull Sale. We are excited about the Angus breed and think the future is incredibly bright for the commercial cow/calf industry. 2012 is the year to retain females and increase your herd size to prepare for the next decade of prosperity in the commercial industry.

We continue to expand our intensive embryo program so you can purchase groups of full brothers to add consistency to your program. We believe in the value of two year old bulls and we will continue to increase the number of two year old bulls in our offering.

Duff New Generation 6107 is a key part of our program and was purchased because he adds muscle shape and moderation in a time when we need to raise Angus that are more efficient. New Generation had to be put down this year with a back injury but we continue to use him aggressively in our embryo program. When you see the New Generation two year olds in this year's sale you will be incredibly impressed.

With the loss of Duff New Generation, we went on the hunt for a replacement with similar qualities and attributes and we were fortunate when Kent McCune found us Lee's Latest Version 0002 at Lee's Cattle Co. in Colorado. Latest Version is a Duff New Attraction off the dam to MCC Lookout and MCC Blackout. We are extremely anxious to see his first calves hit the ground in May.

Strategic planning is a part of all successful operations. If you have specific bull requirements to allow your program to move forward, give us a call and we would love to specifically make the bulls you need through our intensive embryo program.

Thanks and we will see you on April 3rd.

Kevin Blair

KEVIN & NOREEN BLAIR DARREN & DEB BLAIR

PO Box 610 • Lanigan, Saskatchewan S0K 2M0
Tel: cell (306) 365-7922 • office (306) 365-3150
Email: kevin@blairs.ag darren@blairs.ag

www.blairscattleco.com

APRIL 3, 2012 :: 2PM :: SEDLEY SK

:: 75 TOP QUALITY ::

2-YEAR-OLD & YEARLING BLACK & RED ANGUS BULLS

SALE DAY PHONES

Sale Barn..... 306-885-4418
Kevin Blair..... 306-365-7922
Darren Blair..... 306-360-7707
Kelly Schmidt..... 306-365-7138
Chris Schmidt..... 306-946-7948
Blake MacMillan... 306-528-7484
Travis MacPherson 306-360-8888

Shane Michelson....403-363-9973
Patty Smith..... 306-528-7592
Chad Haaland..... 306-544-7770
Craig Blair..... 306-699-7607
Levi Jackson..... 306-537-4690
Herb Friesen..... 306-360-7465

AUCTIONEER

Chris Poley..... 306-220-5006

SALE MARKETING AGENTS

Ringmen

Nate Marin.....306-869-7130
Ryan Dorran 403-507-6483
Dennis Ericson..... 780-361-9347

Bohrson Marketing

Scott Bohrson..... 403-370-3010
Geoff Anderson.....306-731-7921

Castlerock Marketing

Shane Castle..... 306-741-7485

Sale Day Consultants

Ben Wright.....519-374-3335
Grant Mills.....306-365-8086
Kent McCune.....817-602-8629

SIGHT UNSEEN PURCHASES

If you are unable to make the sale, we will help you with your selection and guarantee your satisfaction!

DELIVERY

Receive \$100 rebate/bull that you take home sale day! Otherwise, bulls will be delivered free of charge anywhere in Saskatchewan, Alberta and Manitoba. Delivery will start the week after the sale.

SPECIAL GUESTS

Brian Good, Canadian Angus Assoc. Commercial Fieldman

ACCOMMODATIONS

Days Inn Regina, 306-522-3297 or contact Blake MacMillan at (306) 528-7484.

FINANCING OPTIONS

Cash, cheque or visa are accepted sale day.

CALVING EASE RATING

Bulls with the "5-Star Calving Ease" designation possess the ability to produce offspring that are moderate in birthweight and can be bred to both cows and medium to larger framed heifers.

ONLINE CATALOGUE

www.blairscattleco.com

PHOTOGRAPHY

Grant Rolston :: Paula Schmidt



**JACKSON CATTLE CO., KENBERT ACRES, MAINSTREAM GENETICS,
MICHELSON LAND & CATTLE, NEXERA LAND & CATTLE,
AND ROCKING S RANCH**

PRESENTED BY



PO Box 610 • Lanigan, SK S0K 2M0
306-365-7922 (Kevin's cell) 306-360-7707 (Darren's cell)
306-365-3150 (office)
E-mail: kevin@blairs.ag / darren@blairs.ag
www.blairscattleco.com

Map to the Sale Facility



From Sedley: 4 miles North, 1/2 mile West and 1/2 mile North

Jackson Cattle Co.

Levi & Carmen Jackson and family
Box 159 Sedley, Sask. S0G 4K0
Tel: 306-885-4418

Kenbert Acres

Herb & Donna Friesen and family
Ken & Betty Friesen
Box 22 Drake Sask. S0K 1H0
Tel: 306-363-2203
E-mail: hdtfriesen@sasktel.net

Mainstream Genetics

Chris, Jasmine, Davis and Jenna Schmidt
Box 72 Watrous, SK S0K 4T0
Tel: (306) 946-2616

Michelson Land & Cattle

Shane & Alaina Michelson and family
Box 343 Lipton, SK S0G 3B0
Tel: 306-336-2622

Nexera Land & Cattle Co.

Kelly & Paula Schmidt
Box 111 Drake, Sask. S0K 1H0
Tel: 306-363-2229
E-mail: kelly@blairs.ag

Rocking S Ranch

Shawn & Patty Smith
Box 222 Nokomis, SK S0G 3R0
Tel: 306-484-4591 Fax: 306-484-4501
E-mail: patty@blairs.ag

Pursuit of EXCELLENCE

GUEST CONSIGNORS



Jackson Cattle Co is a family owned operation consisting of Levi and Carmen Jackson, and their children Dakota and Chance. We are very pleased to be able to work with the whole Blairs.Ag crew, and are managing their ET program and sale bulls. Visitors are always welcome at JCC.

Levi & Carmen, Dakota and Chance Jackson



Kenbert Acres is excited to be part of the Blairs.Ag and Guests "Pursuit of Excellence" Bull Sale. Our offering this year consists of top quality 2-year-old bulls that we are pleased to say come from our herd. We believe in raising good quality, easy keeping, easy fleshing, quiet disposition, hardworking, and long lasting animals. Our animals go through a tough selection process, and only the best of the best stick around for sale or replacements. Staying on top of the many changes happening in the cattle industry is not an easy job, but we try to keep pace with the changes that will fit in with our program while making our animals better in the process. Take a look at what we have to offer and we hope it fits in with your breeding program. We stand behind our program, and if you have any problems, please let us know.

Herb & Donna, Tami-Lynn, Tonja, Terrell, Tobia and Teresa Friesen



Mainstream Genetics is a family owned operation; Chris and Jasmine Schmidt, along with their two kids, Davis and Jenna, run a mixed farm near Watrous, SK. We have been involved in the livestock industry all our lives, but are relatively new to the Angus breed. With that, one of our goals has always been to align ourselves with strategic partners and Blairs.Ag is no exception. Mainstream Genetics focuses on producing sound, functional cattle that will work for both the purebred industry and the commercial cattleman. We are excited to partner with Blairs.Ag and invite you to join us April 3rd and be a part of that excitement.

Chris & Jasmine Schmidt



Michelson Land & Cattle is a family operation owned by Shane and Alania Michelson. We are passionate about both the purebred Angus business and the grain industry. Our program is designed around identifying new leading edge genetics to help shape the future of the Angus breed. We are excited to join the Blairs.Ag team in the "Pursuit of Excellence".

Shane & Alaina Michelson



Nexera Land & Cattle Co. is a family operation that is owned by Kelly & Paula Schmidt and our children Hadley and Tate. We are excited to be a part of a sale of this caliber, with breeders that share our same goals. We believe in producing sound, structurally correct bulls with performance and good hair while maintaining ease of birth and excellent vigor. Please join us on April 3rd and join in our "Pursuit of Excellence."

Kelly & Paula Schmidt



Rocking S Ranch is a commercial and purebred Red and Black Angus cattle operation. Our strong commercial cattle influence has guided us to produce cattle that have strong maternal traits with a moderate frame and progeny that can be extremely efficient in a breeding program or in a feedlot. With a focus on producing functional commercial cattle, we are proud that our breeding program has been recognized numerous times in the Commercial Cattle Barn at Agribition. Thanks to Blairs.Ag for including us in the 2012 Pursuit of Excellence Bull Sale.

Shawn & Patty Smith

GENETIC ADVANCEMENT TEAM



Kevin



Darren



Craig



Kelly



Chris



Patty



Blake



Top photo, from left: Craig Blair, Kelly Schmidt, Kevin Blair, Darren Blair, Chris Schmidt
(missing: Patty Smith & Blake MacMillan)

Middle photo: Chad & Carissa Haaland and family

Bottom photo: Levi & Carmen Jackson, Chance, Dakota

Kevin Blair	306-365-7922
Darren Blair	306-360-7707
Craig Blair	306-699-7607
Kelly Schmidt	306-365-7138
Chris Schmidt	306-946-7948
Patty Smith	306-528-7592
Chad Haaland	306-544-7770
Levi Jackson	306-537-4690
Blake MacMillan	306-528-7484

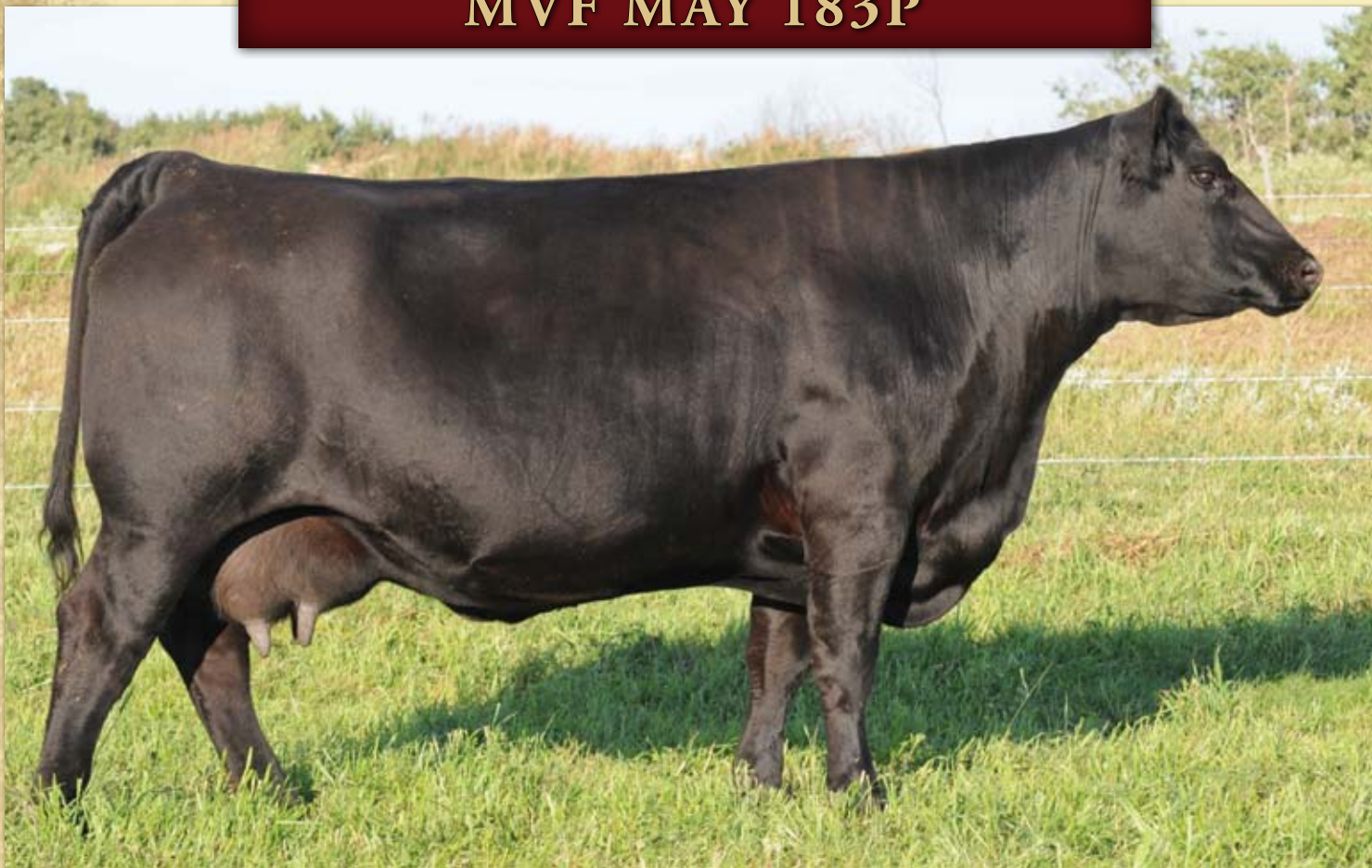


REFERENCE SIRE :: DUFF NEW GENERATION 6107

Duff New Generation 6107 was purchased from Duff Cattle Company in Oklahoma because he added moderation, muscle shape and maturity. We purchased him specifically to work in our black/red carrier program but as we expanded our black program it became clear that he would lead that program as well. New Generation is a full brother to New Attraction, New Edition and New Look. We are excited about the impact he has had in our program and his contribution is now becoming recognized across North America. New Generation had to be put down this spring after he suffered a back injury but we will continue to use him extensively in our embryo program.

2012

MVF MAY 183P



Dam of Lots 1 - 8.

SONS SELL



Pursuit of EXCELLENCE

BLAIR'S

1

BLAIRS NEW GENERATION 233X

BBC 233X March 12 2010 #1585597

PERF	BW	205D	365D	EPDs	BW	WW	YW	Milk	TM
	86				4.5	47	85	16	

BLAIR'S

2

BLAIR'S INFINITY 602X

BBC 602X March 03 2010 #1583279

PERF	BW	205D	365D	EPDs	BW	WW	YW	Milk	TM
	84	652			4.5	47	85	16	

BLAIR'S

3

BLAIR'S MAVERICK 603X

BBC 603X March 05 2010 #1580340

PERF	BW	205D	365D	EPDs	BW	WW	YW	Milk	TM
	86	648			4.5	47	85	16	

BLAIR'S

4

BLAIR'S FUSION 605X

BBC 605X March 07 2010 #1583278

PERF	BW	205D	365D	EPDs	BW	WW	YW	Milk	TM
	85	658			4.5	47	85	16	

BLAIR'S

5

BLAIR'S CENTURION 606X

BBC 606X March 07 2010 #1583271

PERF	BW	205D	365D	EPDs	BW	WW	YW	Milk	TM
	83	663			4.5	47	85	16	

BLAIR'S

6

BLAIR'S AXIAL 607X

BBC 607X March 10 2010 #1583277

PERF	BW	205D	365D	EPDs	BW	WW	YW	Milk	TM
	86	652			4.5	47	85	16	

BLAIR'S

7

BLAIR'S NEW GENERATION 608X

BBC 608X March 11 2010 #1585250

PERF	BW	205D	365D	EPDs	BW	WW	YW	Milk	TM
	84	645			4.5	47	85	16	

BLAIR'S

8

BLAIR'S PRISM 609X

BBC 609X March 12 2010 #1583276

PERF	BW	205D	365D	EPDs	BW	WW	YW	Milk	TM
	81	652			4.5	47	85	16	

O C C GENESIS 872G
DUFF NEW GENERATION 6107
 O C C DIXIE ERICA 814G

O C C DOCTOR 940D CAF
 BLACKBIRD OF R R 1204
 O C C ANCHOR 771A CAF
 O C C DIXIE ERICA 764C

F A R KRUGERRAND 410H AMF CAF NHF
MVF MAY 183P
 CAYMEN MAY 55'00

KRUGERRAND OF DONAMERE 490 AMF NHF
 F A R ERIANNA 286F
 CONNEALY DATELINE
 MVF MAY 80H

The following set of full brothers represents a very rare opportunity. When we expanded our black program it was clear that we wanted a strong influence from the Mountain View program and we are fortunate to have gathered together a fabulous set of Mountain View females. The first MVF female we purchased is MVF May 183P. We are excited to offer 8 full sibs off May 183P and Duff New Generation 6107. These full brothers exhibit the attributes of their sire with the power and maternal qualities of their dam. We think you will be impressed!



2012



BLAIR'S

9

BLAIRS SIN CITY 120X

BBC 120X May 07 2010 #1596160

RED NORTHLINE ATLANTIC CITY
RED WHEEL SIN CITY 43T
 RED WHEEL PRIDE 16M

RED PIE ATLANTIC 2204 OSF MAF
 RED NORTHLINE QUEEN 240H
 RED CON AIR 55G
 RED PTTV PRIDE 3'97 OSF

F A R KRUGERRAND 410H AMF CAF NHF
MVF MAY 183P
 CAYMEN MAY 55'00

KRUGERRAND OF DONAMERE 490 AMF NHF
 F A R ERIANNA 286F
 CONNEALY DATELINE
 MVF MAY 80H

PERF	BW	205D	365D	EPDs	BW	WW	YW	Milk	TM
	96				3.7	38	89	19	38

This is your only opportunity to own a black Sin City bull this year. His dam is a powerful cow that is a large part of our embryo program. 120X is a maternal brother to the 8 New Generation flush mates in the sale.



BLAIR'S

10

BLAIRS NEW GENERATION 26X

BBC 26X April 25 2010 #1644670

O C C GENESIS 872G
DUFF NEW GENERATION 6107
 O C C DIXIE ERICA 814G

O C C DOCTOR 940D CAF
 BLACKBIRD OF R R 1204
 O C C ANCHOR 771A CAF
 O C C DIXIE ERICA 764C

RED LCC SOUTHERN KING 1765K OSC
RED LUCKY "C" NISSAN 58N OSF
 RED PIPESTONE HOLIDAY 63H

RED LCHMN GRND CANYON 1244G OSC MAF
 RED LCHMN LARKABA E1149
 RED SHODEREE RAMBO 122D
 RED COULEE CREST BARONESS 16C

PERF	BW	205D	365D	EPDs	BW	WW	YW	Milk	TM
	83				2.2	30	60	22	37

26X is out of one of the powerful feature cows selling in our 2011 Genetics in Motion sale as "Miss 2003" – Red Lucky C Nissan 58N, who sold to Hall's at Craven. He also has a maternal sister that sold to Graham's Red Angus in Ontario.

BLAIR'S

11

BLAIRS NEW GENERATION 60X

BNC 60X May 09 2010 #1586309

O C C GENESIS 872G
DUFF NEW GENERATION 6107
 O C C DIXIE ERICA 814G

RED TER-RON MAMBO 28K
RED BLAIR'S KURUBA 161T
 RED JCC KURUBA 16K

O C C DOCTOR 940D CAF
 BLACKBIRD OF R R 1204
 O C C ANCHOR 771A CAF
 O C C DIXIE ERICA 764C
 RED YY RED KNIGHT 640F OSF
 RED ALDER ABG STAR DUST 8G
 RED SSS BOMBER 907G
 RED LUMONT KURUBA REDMAN 200W

PERF	BW	205D	365D	EPDs	BW	WW	YW	Milk	TM
	83				2.2	28	57	15	29

Another solid New Generation son. This bull's dam is a great contributor to our program, with her first son going to Dwayne Juve at Kelvington, Sask. 60X is her second effort, and this year, she weaned a great set of twin bull calves.

Co-owned with Nexera Land & Cattle.

BLAIR'S

12

BLAIRS NEW GENERATION 69X

BBC 69X May 12 2010 #1585618

O C C GENESIS 872G
DUFF NEW GENERATION 6107
 O C C DIXIE ERICA 814G

RED WILLOW CREEK DEEP 129N
RED TOPLINE QUEEN 663
 RED TOP LINE QUEEN 235

O C C DOCTOR 940D CAF
 BLACKBIRD OF R R 1204
 O C C ANCHOR 771A CAF
 O C C DIXIE ERICA 764C
 RED PIE DEEP CANYON 908 OSC
 RED WILLOW CREEK MELTE 95L
 RED BRYLOR NEW TREND 22D OSF MAF
 RED TOP LINE QUEEN 45E

PERF	BW	205D	365D	EPDs	BW	WW	YW	Milk	TM
	79				1.0	25	52	16	28

69X is a very complete and moderate bull that will excel however you decide to use him in your breeding program. His dam is a feminine, great uddered female that is the front pasture kind. He has a maternal brother working at TJ Farms - Drake, Sask., and a maternal sister contributing to our program.

Pursuit of EXCELLENCE

BLAIR'S

13

BLAIRS NEW GENERATION 72X

BBC 72X May 16 2010 #1585622

O C C GENESIS 872G
DUFF NEW GENERATION 6107
 O C C DIXIE ERICA 814G

RED GOLD-BAR MERCEDES K 116M
RED GOLD-BAR GOLDIE M 208P
 RED GOLD-BAR GOLDIE J 127M

O C C DOCTOR 940D CAF
 BLACKBIRD OF R R 1204
 O C C ANCHOR 771A CAF
 O C C DIXIE ERICA 764C
 RED GOLD-BAR KING V415 107K
 RED LPC BIRDIE DYNAMICS 2K
 RED GOLD-BAR JACKPOT 803B 103J
 RED PASQUIA GOLDIE 17J

PERF	BW	205D	365D	EPDs	BW	WW	YW	Milk	TM
	86				2.2	28	55	7	21

This bull has cow-maker written all over him, with New Generation on the top side, and the amazing Goldie 208P on the bottom side, all of the daughters should be keepers. The grand-dam of this bull is still producing at 13 years of age.



BLAIR'S

14

BLAIRS NEW GENERATION 81X

BBC 81X May 29 2010 #1585624

O C C GENESIS 872G
DUFF NEW GENERATION 6107
 O C C DIXIE ERICA 814G

RED BRYLOR NEW TREND 22D OSF MAF
RED JD LANN BLOCKANA 5M
 RED TOWAW BLOCKANA 40J

O C C DOCTOR 940D CAF
 BLACKBIRD OF R R 1204
 O C C ANCHOR 771A CAF
 O C C DIXIE ERICA 764C
 SSS BLACK TREND 13B
 RED MEADOW CK MISS SEAMAN 31A
 RED CC EXPANSION 5E
 RED TOWAW BLOCKANA 44E

PERF	BW	205D	365D	EPDs	BW	WW	YW	Milk	TM
	73				1.3	25	55	21	33

Another great bull with a tremendous cow family to back him up. Blockanna 5M is a beautiful cow that we flushed for Columbia and Mexico and qualifies as an Elite Dam in the Canadian Angus herd-book. 81X has maternal sisters producing at Geis Angus, Lewis Farms and Blairs.Ag Cattle Co.



Dam of Lot 14 - Red J D Lann Blockana 5M



2012



BLAIR'S

15

BLAIRS MULBERRY 108X

BBC 108X February 06 2010 #1585591

RED COMPASS MULBERRY 449M
RED FINE LINE MULBERRY 26P AMF OSF MAF
 RED DUS FAYETTE 8G

B C LOOKOUT 7024 AMF CAF NHF
NLC COCO 4U
 FV TREASURY TRADITION 47G

RED HR RAMBO ET 91K
 RED BRYLOR MISS ROC 20H
 RED SILVEIRAS REDFORD OSF
 RED MC DOUGALL FAYETTE 59A
 O C C LEGEND 616L AMF CAF NHF OSF
 GIBBET HILL MIGNONNE E37
 G T S V F TREASURY AMF CAF NHF
 F V AMBUSH TRADITION 270D

PERF	BW	205D	365D	EPDs	BW	WW	YW	Milk	TM	5 Star CE
	81	698			1.6	42	86	16	37	

Have a good look at the muscle and rib shape in this powerful Mulberry two year old. His dam, Coco 4U, was purchased from Nexera Land and Cattle Co. because of the Treasury Tradition 47G cow in her pedigree. You have the perfect combination of moderation and power in Mulberry 108X. Check out the calving ease on this one.



BLAIR'S

16

BLAIRS MULBERRY 109X

BBC 109X February 08 2010 #1585592

RED COMPASS MULBERRY 449M
RED FINE LINE MULBERRY 26P AMF OSF MAF
 RED DUS FAYETTE 8G

SITZ ALLIANCE 9160
REMINGTON TIBBIE 584T
 REMINGTON TIBBIE 22P

RED HR RAMBO ET 91K
 RED BRYLOR MISS ROC 20H
 RED SILVEIRAS REDFORD OSF
 RED MC DOUGALL FAYETTE 59A
 SITZ ALLIANCE 6595 AMF NHF
 SITZ BLACKCAP EFFIE 4088
 TC STOCKMAN 365
 REMINGTON'S TIBBIE 116C

PERF	BW	205D	365D	EPDs	BW	WW	YW	Milk	TM	5 Star CE
	68	741			-0.6	33	70	27	44	

109X is a very moderate sure-fire heifer bull. If you have a big group of heifers to breed and you want to sleep all night, make sure he is on your list.

BLAIR'S

17

BLAIR'S SAKIC 106X

BBC 106X February 02 2010 #1588061

RED SIX MILE AVIATOR 217P OSF
RED SIX MILE SAKIC 832S OSF
 RED SIX MILE SIERA 257P OSF

MVF DATELINE 202S
BLAIR'S TIPTOP 125U
 CARRUTHERS TIPTOP 18J

RED WILDMAN DENALI 19L
 RED RSL SUE 400F OSF
 RED SIX MILE CUJO 800M
 RED BOUNTY B MISS SIERA BAR
 MVF VRD DATELINE 913P AMF CAF NHF
 FREYBURN TIBBIE 10H
 R R SCOTCHCAP 9440 AMF NHF
 WHITESHORE TIPTOP 40Y

PERF	BW	205D	365D	EPDs	BW	WW	YW	Milk	TM	5 Star CE
	77				1.0	40	70	24		

This is the only Sakic bull on offer and one of the few black Sakic's to ever be offered. 106X is a big-hipped, long bull that will add pounds and shape to your calf crop. His dam is a moderate framed, easy fleshing cow – the kind everyone would like to have as an entire herd.

BLAIR'S

18

BLAIRS LEGACY 115X

BBC 115X March 02 2010 #1654476 NHF MAF

S A V LEGACY 5216 AMF CAF NHC
JS LEGACY 805 NHC
 JS MIDWAY DOLLY 85P

RED BRYLOR SDL SQUALL 230S OSF MAC
RED JAS BERRY 67U
 RED BRYLOR BARRY 212L

S A V PATHFINDER 3134
 S A V ROSETTA 3350 AMF
 GH MIDWAY 28M
 ROYAL PRIDE DOLLY 67K
 RED BRYLOR SDL PASQUALE 213P
 RED CYT FANNY 15P MAC
 RED GEIS PRIME RIB 411
 RED OAKLEIGH BERY 2F

PERF	BW	205D	365D	EPDs	BW	WW	YW	Milk	TM	5 Star CE
	77	710			-1.0	30	60	18		

115X's dam is a beautiful Angus cow that we showed as a bred heifer. He will add length to his calves and will work well on heifers.

Pursuit of EXCELLENCE

JACKSON

19

CCCJ THOR 7X

CCCJ 7X February 15 2010 #1585156

HF KODIAK 5R AMF CAF NHF MAF
HF TIGER 5T AMF CAF NHF
 HF ECHO 84R

SANDY BAR ADVANTAGE 43M
 WILBAR RUBY 955N
 TC FREEDOM 104 AMF CAF NHF
 HFDF ECHO 6N

S A V NET WORTH 4200 AMF CAF NHF
MVF ROSEBUD 72U
 LENLOOK ROSEBUD 30G

S A V 8180 TRAVELER 004 AMF CAF NHF
 S A V MAY 2410
 WHITESTONE FLY TRAVELER 3006 AMF CAF NHF
 LENLOOK ROSEBUD 6A

PERF	BW	205D	365D	EPDs	BW	WW	YW	Milk	TM	5 Star CE
	80	778			1.2	62	110	24	55	

Light birth weight, high performance. Thor's EPDs are in the top 15% of the breed for birth weight, and milk, and the top 1% for both weaning and yearling weights. Exceptionally long-sided, deep-made, and well balanced. His pedigree is full of breed greats - Kodiak, Tiger, Freedom and Net Worth.



JACKSON

20

CCCJ CAPITAL 5X

CCCJ 5X February 02 2010 #1585155

HF KODIAK 5R AMF CAF NHF MAF
HF TIGER 5T AMF CAF NHF
 HF ECHO 84R

SANDY BAR ADVANTAGE 43M
 WILBAR RUBY 955N
 TC FREEDOM 104 AMF CAF NHF
 HFDF ECHO 6N

B/R NEW FRONTIER 095 AMF CAF NHF
BLACK RIDGE ERROLLINE 24S
 BLACK RIDGE ERROLLINE 24K

B/R NEW DESIGN 036 AMF CAF NHF
 WHITE FENCE PRIDE H1
 WHITESTONE WIDESPREAD MB AMF NHF
 BLACK RIDGE PAIGE 24E

PERF	BW	205D	365D	EPDs	BW	WW	YW	Milk	TM
	90	655			2.4	53	100	18	45

Long-sided, straight-topped, very good footed with a great disposition. His sire, HF Tiger, has sired many exceptional cattle, and his dam is a favourite here at JCC. Capital 5X's EPDs are in the top 10% of the breed for weaning weight and the top 5% for yearling weight.



2012



Sire of Lot 21 - SAV Final Answer 0035



KENBERT

21

KENBERT FINAL ANSWER 5X

JKHF 4X January 06 2010 #1599051

SITZ TRAVELER 8180 AMF CAF NHF
SAV FINAL ANSWER 0035 AMF CAF NHF
 SAV EMULOUS 8145 CAF

RRD AWESOME 99J
ELLIOTT PATRICIA 13L
 JNH PATRICIA 89G

G D A R TRAVELER 71 AMF CAF NHF
 SITZ EVERELDA ENTENSE 1137
 BON VIEW BANDO 598 AMF CAC
 SAV SKY EMULOUS 2124
 MINERTS FORTUNE 2000 AMF CAF NHF
 HILLVIEW PRIDE 973G
 HARMON RANCHERS CHOICE 4860
 PATRICIA MCB 99'91

PERF	BW	205D	365D	EPDs	BW	WW	YW	Milk	TM
	93								

Here is a long, deep, smooth bodied Final Answer son. His good feet will take him a long way.

KENBERT

22

KENBERT FINAL ANSWER 11X

JKHF 11X January 19 2010 #1647228

SITZ TRAVELER 8180 AMF CAF NHF
SAV FINAL ANSWER 0035 AMF CAF NHF
 SAV EMULOUS 8145 CAF

G D A R OSCAR 711 AMF NHF
LINWOOD RUBY 21G
 LINWOOD RUBY 16C

G D A R TRAVELER 71 AMF CAF NHF
 SITZ EVERELDA ENTENSE 1137
 BON VIEW BANDO 598 AMF CAC
 SAV SKY EMULOUS 2124
 BALDRIDGE OSCAR
 LT FOREVER LADY 395 G D A R
 WOODHILL TRIPLE THREAT AMF CAF
 LINWOOD RUBY 16W

PERF	BW	205D	365D	EPDs	BW	WW	YW	Milk	TM
	81								

This is an embryo bull produced from Linwood Ruby 21G and Final Answer. He is a long, thick bull with lots of depth and round muscling. He is a full brother to Lot 23 featured below. We are very pleased with how these embryo calves have performed.

KENBERT

23

KENBERT FINAL ANSWER 10X

JKHF 10X January 15 2010 #1647227

SITZ TRAVELER 8180 AMF CAF NHF
SAV FINAL ANSWER 0035 AMF CAF NHF
 SAV EMULOUS 8145 CAF

G D A R OSCAR 711 AMF NHF
LINWOOD RUBY 21G
 LINWOOD RUBY 16C

G D A R TRAVELER 71 AMF CAF NHF
 SITZ EVERELDA ENTENSE 1137
 BON VIEW BANDO 598 AMF CAC
 SAV SKY EMULOUS 2124
 BALDRIDGE OSCAR
 LT FOREVER LADY 395 G D A R
 WOODHILL TRIPLE THREAT AMF CAF
 LINWOOD RUBY 16W

PERF	BW	205D	365D	EPDs	BW	WW	YW	Milk	TM
	85								

This is a full brother to Lot #22 featured above, who has also been produced as part of our embryo program. We really like the way these calves have turned out – they are well muscled with lots of depth, length of spine and they have the added bonus of low birth weights.

Pursuit of EXCELLENCE

KENBERT

24

KENBERT FINAL ANSWER 12X

JKHF 12X January 24 2010 #1647220

SITZ TRAVELER 8180 AMF CAF NHF
S A V FINAL ANSWER 0035 AMF CAF NHF
 S A V EMULOUS 8145 CAF

YOUNG-FREY TOUCHSTONE 1E
NU WAVE ROSEBUD TOUCH 6G
 OAK BEND ROSEBUD 208B

G D A R TRAVELER 71 AMF CAF NHF
 SITZ EVERELDA ENTENSE 1137
 BON VIEW BANDO 598 AMF CAC
 S A V SKY EMULOUS 2124
 CENTURY TOUCHSTONE 131
 YOUNG DALE GEORGINA 75Z
 V D A R NEW TREND 315 AMF CAF NHF
 OAK BEND ROSEBUD 807X

PERF	BW	205D	365D	EPDs	BW	WW	YW	Milk	TM
	87								

Another embryo with a different pedigree, Nu Wave Rosebud Touch 6G and Final Answer. Here is a long, deep bodied bull with lots of width.



KENBERT

25

KENBERT PENDLETON 7X

JKHF 7X January 09 2010 #1647222

S A V FINAL ANSWER 0035 AMF CAF NHF
HARB PENDLETON 765 J H AMF CAF NHF
 H A R B BLACK LADY 375 J H

BELVIN MANAGER 101'03
BJ'S LUCY 25S
 YOUNG DALE LUCY 7K

SITZ TRAVELER 8180 AMF CAF NHF
 S A V EMULOUS 8145 CAF
 H A R B HIGH PLAINS 975 JH AMF CAF NHF
 H A R B BLACK LADY 073 J H
 BELVIN MERCEDES 32'02
 BELVIN LADY DI 32'95
 YOUNG DALE KRUGERRAND 2H
 YOUNG DALE LUCY 35H

PERF	BW	205D	365D	EPDs	BW	WW	YW	Milk	TM
	90								

Here is an embryo bull out of BJ's Lucy 25S and Pendelton. 7X has great width, length and depth with a great set of feet. He would make a great addition to your herd.



KENBERT

26

KENBERT SPITFIRE 18X

JKHF 18X April 12 2010 #?133225

BELVIN SPITFIRE 109'06
KENBERT SPITFIRE 60U
 NU WAVE ROSIE 30P

CONNEALY FOUNDATION 426 AMF CAF NHF
KENBERT FOUNDATION RUBY 5U
 KENBERT PRIME CUT RUBY 76S

PEAK DOT STOCKMAN 254N
 BELVIN GEORGINA 81'03
 NEW FORCE BATTLE CRY 39M
 NU WAVE ROSEBUD 3J
 C A FUTURE DIRECTION 5321 AMF CAF NHC
 RUBY RED OF CONANGA 436
 KENBERT PRIME CUT 26P
 KENBERT FORTUNE RUBY 69P

PERF	BW	205D	365D	EPDs	BW	WW	YW	Milk	TM
	81								

This bull has lots of muscle combined with depth of body and width across the top. Combine the overall performance with his moderate birth weight, and we believe he will be an excellent herd sire prospect. His sire, Kenbert Spitfire 60U, comes from the award winning Belvin Spitfire 109'06.



2012



KENBERT

27

KENBERT SPITFIRE 45X

JKHF 45X May 28 2010 #CM282791

PEAK DOT STOCKMAN 254N
BELVIN SPITFIRE 109'06
 BELVIN GEORGINA 81'03

CRESCENT CREEK CEO 58J
KENBERT CEO GILDA 60L
 KENBERT NEW TREND GILDA 1G

HILOW STOCKMAN 21L
 BARDOLIA OF PEAK DOT 539K
 BELVIN LINCOLN 82'01
 BELVIN GEORGINA 96'98
 CRESCENT CREEK CHIEF 80G
 CRESCENT CREEK LADY BATE 59A
 V D A R NEW TREND 802 AMF CAF
 KENBERT BALANCER EUNICE

PERF	BW	205D	365D	EPDs	BW	WW	YW	Milk	TM
	84								

Here is a son out of Belvin Spitfire 109'06, Grand Champion Bull at the Calgary Bull Sale in 2007, and a good strong cow. He is deep bodied with lots of length and muscle. His low birth weight makes him a good choice for either heifers or cows.



KENBERT

28

KENBERT SPITFIRE 56X

JKHF 56X May 04 2010 #CM282761

PEAK DOT STOCKMAN 254N
BELVIN SPITFIRE 109'06
 BELVIN GEORGINA 81'03

CRESCENT CREEK CHIEF 93J
KENBERT CHIEF HEDWIG 62L
 KENBERT ERNEST HEDWIG

HILOW STOCKMAN 21L
 BARDOLIA OF PEAK DOT 539K
 BELVIN LINCOLN 82'01
 BELVIN GEORGINA 96'98
 DWAJO CHIEF 92E
 CRESCENT CREEK PRINCESS 4Y
 KENBERT TRAVELER ERNEST
 KENBERT JACK FRANCIS 42F

PERF	BW	205D	365D	EPDs	BW	WW	YW	Milk	TM
	87								

This is another Belvin Spitfire that has a great set of feet, tremendous length, and who is from a strong cow family. His moderate birth weight makes him a bull worth looking at on sale day.



KENBERT

29

KENBERT SPITFIRE 59X

JKHF 59X May 05 2010 #CM282763

PEAK DOT STOCKMAN 254N
BELVIN SPITFIRE 109'06
 BELVIN GEORGINA 81'03

K C F BENNETT TOTAL AMF CAF NHF
KENBERT TOTAL LASS 20T
 CRESCENT CREEK LASS 5R

HILOW STOCKMAN 21L
 BARDOLIA OF PEAK DOT 539K
 BELVIN LINCOLN 82'01
 BELVIN GEORGINA 96'98
 SITZ ALLIANCE 6595 AMF NHF
 EXT OF CONANGA 6790
 RR SCOTCHMAN 2999
 CRESCENT CREEK LASS 11E

PERF	BW	205D	365D	EPDs	BW	WW	YW	Milk	TM
	94								

Another Belvin Spitfire that will add pounds to your calves in the fall. Don't miss out on this herdsire prospect – he is long, deep and chalked full of performance.

Pursuit of EXCELLENCE

KENBERT

30

KENBERT SPITFIRE 80X

JKHF 80X May 09 2010 #CM282775

PEAK DOT STOCKMAN 254N
BELVIN SPITFIRE 109'06
 BELVIN GEORGINA 81'03

LUKENS 9440 SCOTCH CAP L463
KENBERT RUBY 24K
 LINWOOD RUBY 44G

HILOW STOCKMAN 21L
 BARDOLIA OF PEAK DOT 539K
 BELVIN LINCOLN 82'01
 BELVIN GEORGINA 96'98
 R R SCOTCHCAP 9440 AMF NHF
 G D A R FOREVER LADY 9163
 LINWOOD VALOR 22E
 LINWOOD RUBY 15B

PERF	BW	205D	365D	EPDs	BW	WW	YW	Milk	TM
	86								

Here is a long, deep-bodied bull with lots of thickness. A son out of Belvin Spitfire 109'06 and one of our top producing cow families. Take a look at his birth weight.



KENBERT

31

KENBERT SPITFIRE 50X

JKHF 50X May 03 2010 #CM282757

PEAK DOT STOCKMAN 254N
BELVIN SPITFIRE 109'06
 BELVIN GEORGINA 81'03

BALDRIDGE JULIO 157J AMF CAC NHF
KENBERT JULIO RUBY 28P
 KENBERT BALANCER ERIN

HILOW STOCKMAN 21L
 BARDOLIA OF PEAK DOT 539K
 BELVIN LINCOLN 82'01
 BELVIN GEORGINA 96'98
 BALDRIDGE BOB
 BALDRIDGE BLACKBIRD 211G
 HOFF BALANCER S C 7109 AMF CAF NHF
 LINWOOD RUBY 27C

PERF	BW	205D	365D	EPDs	BW	WW	YW	Milk	TM
	91								

This Belvin Spitfire 109'06 son has lots of depth of body coupled with length and thickness to match. His dam is a moderate framed cow with lots of thickness. Do not miss out on this Spitfire son.



Belvin Spitfire 109'06 - Sire of Lots 27 - 31.

KENBERT

32

KENBERT SPITFIRE 119X

JKHF 18X April 12 2010 #?133225

BELVIN SPITFIRE 109'06
KENBERT SPITFIRE 60U
 NU WAVE ROSIE 30P

CONNEALY FOUNDATION 426 AMC CAF NHF
KENBERT FOUNDATION RUBY 5U
 KENBERT PRIME CUT RUBY 76S

PEAK DOT STOCKMAN 254N
 BELVIN GEORGINA 81'03
 NEW FORCE BATTLE CRY 39M
 NU WAVE ROSEBUD 3J
 C A FUTURE DIRECTION 5321 AMC CAF NHC
 RUBY RED OF CONANGA 436
 KENBERT PRIME CUT 26P
 KENBERT FORTUNE RUBY 69P

PERF	BW	205D	365D	EPDs	BW	WW	YW	Milk	TM
	81								

119X has lots of muscle shape and depth. Check out his 81 lb actual birth weight – a strong candidate for your replacement heifer pen.



2012



BLAIR'S

33

RED U-2 PERFECTION 8067U

DUA 8067U January 13 2008 #1448879

RED FCC RAMBO 502 OSF
RED STEWART PATHFINDER 5L
 RED JEWEL MISS PATHY 62A

RED HOWE MR MATRIX 7L
RED U-2 DUCHESS 334N
 RED U-2 DUCHESS 162L

RED CV FOUR TIMES
 COPPER LASS 2392
 RED THREE D PATHFINDER 22'86
 RED JEWEL MISS CHEROKEE 58W
 RED HOWE MR MAT DDH 19F
 RED CRANSTON TINKERBELL 1J
 RED BLAZE V415 OSF
 RED U-2 DUCHESS 08E

PERF	BW	205D	365D	EPDs	BW	WW	YW	Milk	TM	5 th CE
	96	669	1277		1.4	23	54	16	28	CE

Every year we get calls from customers wanting to buy bulls with a year or two breeding experience that can cover a larger group of cows. We are excited to offer U2 Perfection 8067U as a proven herdsire. You will see from his sons that sell today that he has the credentials and the ability to raise great ones. He is definitely a front pasture bull that has excellent EPD's and has powerful maternal strength. You will notice the great Pathy 62A cow on the top side who is known to all in Angus circles.



BLAIR'S

34

RED BLAIRS PERFECTION 42X

BBC 42X May 03 2010 #1590011

RED STEWART PATHFINDER 5L
RED U-2 PERFECTION 8067U
 RED U-2 DUCHESS 334N

RED CRCC CHIEF 650K
RED RIVERDALE SOXRO 444M
 RED RIVERDALE TEW SOXRO 50F

RED FCC RAMBO 502 OSF
 RED JEWEL MISS PATHY 62A
 RED HOWE MR MATRIX 7L
 RED U-2 DUCHESS 162L
 RED FORSTER CHIEF 7182ET
 RED BRYLOR CATERINA 81E
 RED CUMNOCK STAR 160Z
 RED SIX MILE TEW SOXRO 653W

PERF	BW	205D	365D	EPDs	BW	WW	YW	Milk	TM	5 th CE
	82				0.1	18	41	18	27	CE

This big-hipped bull is sure to catch your attention! He is a son of a powerful cow coming from the Riverdale dispersal. 444M is a deep red powerful cow that has 5 sons working in commercial herds in Saskatchewan.



BLAIR'S

35

RED BLAIRS PERFECTION 43X

BBC 43X May 03 2010 #1590012

RED STEWART PATHFINDER 5L
RED U-2 PERFECTION 8067U
 RED U-2 DUCHESS 334N

RED SOUTHLAND ENERGIZER 100R
RED BLAIR'S LARKABA 17T
 RED BAR-E-L LARKABA 23R

RED FCC RAMBO 502 OSF
 RED JEWEL MISS PATHY 62A
 RED HOWE MR MATRIX 7L
 RED U-2 DUCHESS 162L
 RED NORTHLINE EQUALIZER 189N
 RED SOUTHLAND HEATHER 131N
 RED YY RAMBLER 322N
 RED BAR-E-L LARKABA 72N

PERF	BW	205D	365D	EPDs	BW	WW	YW	Milk	TM	5 th CE
	75				0.7	15	36	18	25	CE

43X is a compact bull with lots of shape. These are the first U2 Perfection sons that we have to offer, and we are confident you will be impressed. To further add to the strength of 43X's pedigree, 43X's dam is a front pasture cow with a beautiful udder. Here is another bull that you can turn out with a large group of replacement heifers and be confident that you are improving your cowherd.

Pursuit of EXCELLENCE

BLAIR'S

36

RED BLAIRS PERFECTION 79X

BBC 79X May 26 2010 #1590023

RED STEWART PATHFINDER 5L
RED U-2 PERFECTION 8067U
 RED U-2 DUCHESS 334N

RED UBAR SEQUOIA 202
RED BRYLOR G F SUGRLAND 174S
 RED BRYLOR BONITA 58J

RED FCC RAMBO 502 OSF
 RED JEWEL MISS PATHY 62A
 RED HOWE MR MATRIX 7L
 RED U-2 DUCHESS 162L
 RED BJR HIGH CAPACITY 008 OSF MAF
 RED FORSTER COPPRQUEEN 7168 OSF
 RED TKP BODACIOUS 693 OSF
 RED BRYLOR CHEROK 40X

PERF	BW	205D	365D	EPDs	BW	WW	YW	Milk	TM
	90				2.0	27	54	18	31

79X's dam is a very attractive no miss cow that continues to come to the top of the herd. This is another U2 Perfection and he definitely puts a stamp on them. Feel confident that 79X will sire calves who you can take to town as a uniform package – imagine the marketing opportunity here.



Sire of Lots 34 - 36. Lot 33, Red U-2 Perfection 8067U as a yearling.



Dam of Lot 36 - Red Brylor GF Sugrland 174S

BLAIR'S

37

RED RINGSTEAD KARGO 443W

RSTD 443W May 07 2009 #1581262

RED COMPASS KARGO 83K
RED RINGSTEAD KARGO 107M
 RED GET-A-LONG MRS. YOUNG 095

RED RINGSTEAD KLONDIKE 199R
RED RINGSTEAD CHEROK 423T
 RED RINGSTEAD CHEROK 53M

RED BADLANDS BONUS 702
 BLACK SSS MISS NEW QUICK 208E
 RED GET-A-LONG GOLD MEDAL 7106
 RED GET-A-LONG MRS YOUNG 4213
 RED SSS YUKON 440K
 RED HOWE MS MINOLA DDH 98D
 RED HOLDEN HI HO 574
 RED LUMONT TOP CHEROK 73D

PERF	BW	205D	365D	EPDs	BW	WW	YW	Milk	TM
	72	696	1080		-2.2	22	39	13	24

We are super excited to offer this Kargo son. 443W is a $\frac{3}{4}$ brother to our senior herd sire, Kargo 215U, that has done a great job for us and raised the \$11,500 Foxie 76X to Wildcat Creek Ranch at Fort Worth last year. Kargo 443W will get a five star in everyone's catalog. He is cherry red, deep-sided and chalked full of power.



2012



ROCKING S

38

RED ROCKING S CONGRESS 167W

RS 167W April 30 2009 #1538096

RED STEWART PATHFINDER 5L
RED D-BAR PATHFINDER 36P
 RED TOP LINE SOXRO 2K

RED TOWAW EXPANSION 246K
RED CRESCENT CRK PATRICE 167N
 RED FLAT LAKE PATRICE 3L

RED FCC RAMBO 502 OSF
 RED JEWEL MISS PATHY 62A
 RED BRYLOR NEW TREND 22D OSF MAF
 RED THREE E SOXRO 13C
 RED CC EXPANSION 5E
 TOWAW MISS ROC 4D
 RED BRYLOR NEW TREND 22D OSF MAF
 RED FLAT LAKE PATRICE 20F

PERF	BW	205D	365D	EPDs	BW	WW	YW	Milk	TM	CE
	77	893			0.8	27	57	18	32	56/60

If you are looking for a herdsire that will provide calving ease combined with increased payweight in the fall, make sure you have a look at Congress 167W on sale day. With an actual birthweight of 77 lbs and a 205 day adjusted weaning weight of 893 lbs, he has a tremendous growth to weaning weight growth curve. His dam Patrice 167N has been a never miss cow and will be flushed this spring. As a 3 year old, 167W offers a little more maturity to cover more cows and an added bonus is his quiet disposition. At Agribition 2011, 167W's half sisters were the Champion Cow-Calf pairs in the Commercial Cattle Heifer Alley Futurity.



BLAIR'S

39

RED BLAIRS BOOM 228X

BBC 228X March 01 2010 #1653437

RED SSS BOOM TOWN 260D
RED CRCC BOOM 100N
 LAZY MC BESS 4K

RED NORTHLINE EQUALIZER 189N
RED SOUTHLAND LAVAGIRL 54R
 RED LITTLE DE MS CONTI 940F

RED SSS BOOMER 803B
 RED SSS SOAPY 542Y
 CONNEALY DATELINE
 RED LAZY MC AM'S BEST 11H
 DURLOWE JESTER 34L
 NORTHLINE LADY 189K
 RED LITTLE DE STARBUCK 613C
 RED MISS CONTINENTAL 6U

PERF	BW	205D	365D	EPDs	BW	WW	YW	Milk	TM	CE
	89	761			-0.7	11	26	14		56/60

This is an ET calf from a flush we purchased from Southland Angus. We sold bulls out of this same flush in our last two bull sales. 228X has a very unique outcross pedigree.



BLAIR'S

40

RED BLAIRS DESTINY 96X

BBC 96X May 12 2010 #1585620

RED SSS STORM 87M
RED SHODEREE DESTINY 114P
 RED SHODEREE LEADING LADY 96K

RED TER-RON MAMBO 28K
RED WLC ROXIE 66P
 RED JCC ROXIE 10J

RED YY STORM 901J
 RED SSS LYDA 381J
 RED SHODEREE LANDMARK 19F
 RED SHODEREE LEADING LADY 80H
 RED YY RED KNIGHT 640F OSF
 RED ALDER ABG STAR DUST 8G
 RED MCRAE'S SIRLOIN 26F
 RED CUTARM ROXIE 659D

PERF	BW	205D	365D	EPDs	BW	WW	YW	Milk	TM	CE
	81				3.9	49	84	0	24	

96X is from one of our most powerful cows at Blairs.Ag and out of the Destiny 114P bull. 96X will add length and pounds to your calf crop.

Pursuit of EXCELLENCE

BLAIR'S

41

RED BLAIRS DESTINY 27X

BBC 27X April 26 2010 #1585601

RED SSS STORM 87M
RED SHODEREE DESTINY 114P
 RED SHODEREE LEADING LADY 96K

RED HCF RED ROCK 212
RED SOUTHLAND MISS ROCKY 266R
 RED KORAN 16D 164

RED YY STORM 901J
 RED SSS LYDA 381J
 RED SHODEREE LANDMARK 19F
 RED SHODEREE LEADING LADY 80H
 RED LMAN KING ROB 8621 OSF MAF
 RED BJR MS STONY 4X-516 OSF
 RED GET-A-LONG XTRA SPECIAL
 RED CLAYSMORE INA 30T

PERF	BW	205D	365D	EPDs	BW	WW	YW	Milk	TM
	83				2.4	38	66	-1	18

Destiny 27X's dam is a definite stand out as she is a moderate complete cow with an outstanding udder. In addition, she has the ability to raise a big bull calf and still come off the pasture in great condition. This will be the last of the well accepted Destiny 114P sons to sell.



Dam of Lot 39 - Red Southland Lavagirl 54R

BLAIR'S

42

RED BLAIRS MAMBO 220X

BNC 220X February 08 2010 #1588497

RED YY RED KNIGHT 640F OSF
RED TER-RON MAMBO 28K
 RED ALDER ABG STAR DUST 8G

RED SSS BOMBER 907G
RED JCC LASS 63K
 RED CUTARM YONSOTTU 247B

RED YY 23L TOPPER 408D
 RED TOP GOLDIE 40U
 RED SSS BOOM TOWN 260D
 RED BRA STAR DUST 8B
 RED SSS BOOMER 803B
 RED CROWFOOT KATE 435D
 RED DEKAP RED DALLS 345
 RED CUTARM YONSOTTU 718Y

PERF	BW	205D	365D	EPDs	BW	WW	YW	Milk	TM
	84	653			2.0	29	58	10	25

220X is a full brother to the Mambo flush brothers we sold in the sale last year. Lass 63K has been one of the foundation cows here at Blair's and is a big part of our ET program. To date, 63K has 25 progeny of which 19 are Mambo calves, including the famous Lass 41N. When we have seen almost 20 calves out of this mating, we have full confidence that it will work for you. If you need to add power to your cowherd and pounds to your calf crop, this is one you need to mark. *Co-owned with Nexera Land & Cattle.*



Dam of Lot 42 - Red JCC Lass 63K

BLAIR'S

43

RED BLAIRS NEW TREND 991W

BBC 1W December 25 2009 #1655549

SSS BLACK TREND 13B
RED BRYLOR NEW TREND 22D OSF MAF
 RED MEADOW CK MISS SEAMAN 31A

RED K-C MR "E" 92N
RED CINDER FREYJA 29U
 RED ROYAL FREYJA 29M OSF

V D A R NEW TREND 315 AMF CAF NHF
 RED SSS MISS DYNAMO 3W
 RED SEAMAN CHIEF 47Y
 RED MEADOW CK PRINCESS 10W
 RED K-C "MR E" 5L
 RED ROBAN SWEET LIPS 3E
 RED PIE LO CANYON 912
 RED ROYAL TOGNO FREYJA 156B

PERF	BW	205D	365D	EPDs	BW	WW	YW	Milk	TM
	92				2.2	27	57	21	

If you are in herd building mode, you will want to keep every female sired by 991W, as he is a direct son of New Trend 22D, the renowned Red Angus female maker. We purchased his dam as a bred heifer from Cinder Angus in the 2009 Red Roundup Sale where she stood out as an extremely stout made, soft-hided female with loads of depth. 991W is actually a two year old but had to be registered as a "W" instead of an "X" as he came one week early and was a Christmas present for us in December 2009.



Dam of Lot 43 - Red Cinder Freyja 29U

2012



BLAIR'S

44

RED BLAIRS NEW TREND 20X

BBC 20X March 12 2010 #1653627 MAF

SSS BLACK TREND 13B
RED BRYLOR NEW TREND 22D OSF MAF
 RED MEADOW CK MISS SEAMAN 31A

RED BRYLOR MASTER PLAN 17M MAC
RED FABULOUS CARMEN 14P
 RED BAR M CARMAN 17M

V D A R NEW TREND 315 AMF CAF NHF
 RED SSS MISS DYNAMO 3W
 RED SEAMAN CHIEF 47Y
 RED MEADOW CK PRINCESS 10W
 RED BASIN SENSATION 702E OSF
 RED BRYLOR BONITA 66K
 RED BRYLOR PHOENIX 16K
 RED TFE 32E

PERF	BW	205D	365D	EPDs	BW	WW	YW	Milk	TM
	84	667			2.2	31	68	17	

A direct New Trend 22D son! 22D was one of the great female producers in the Red Angus breed. This semen is hard to find, so make use of this opportunity to take 20X home and build an outstanding replacement pen.



BLAIR'S

45

RED BLAIRS MULBERRY 13X

BBC 13X February 04 2010 #1585588

RED COMPASS MULBERRY 449M
RED FINE LINE MULBERRY 26P AMF OSF MAF
 RED DUS FAYETTE 8G

RED TER-RON CALLOWAY 15R
RED LLB ANNIE 337U
 RED GEIS ANNIE 72'02

RED HR RAMBO ET 91K
 RED BRYLOR MISS ROC 20H
 RED SILVEIRAS REDFORD OSF
 RED MC DOUGALL FAYETTE 59A
 RED HEARTLAND KNIGHT CHARM 11L
 RED THAT'LL DO RED WING 15A
 RED SIX MILE ICING 82G
 RED CRESCENT CREEK ANNIE 118K

PERF	BW	205D	365D	EPDs	BW	WW	YW	Milk	TM
	72	679			-0.4	32	67	11	27

Mulberry 13X has a pedigree that reads like the who's who of the Angus breed. He is sired by Mulberry 26P who has become a household name in Angus circles around the world, and the dam of 13X is a descendant of the legendary Annie 22Z. This bull has lots of volume and dimension, and has a low birth weight to complement it. Remember the five Squall flush brothers that were one of the highlights of last year's sale? They were out of Mulberry 26P's dam. That kind of consistency is no accident!



BLAIR'S

46

RED BLAIRS SIN CITY 55X

BBC 55X May 07 2010 #1596138

RED NORTHLINE ATLANTIC CITY
RED WHEEL SIN CITY 43T
 RED WHEEL PRIDE 16M

RED BJR JR 105
RED LUCKY "C" NORMA 32N
 RED PIPESTONE JAYCEE 78J

RED PIE ATLANTIC 2204 OSF MAF
 RED NORTHLINE QUEEN 240H
 RED CON AIR 55G
 RED PTTV PRIDE 3'97 OSF
 LMB JOHNY REB 091
 RED BJR MATTIE 677-6130
 RED L4 AMIGO 419C
 RED PIPESTONE GOLDEN GIRL 28G

PERF	BW	205D	365D	EPDs	BW	WW	YW	Milk	TM
	86				0.7	24	54	16	27

55X is the son of a beautiful cow we purchased at the Lucky C dispersal, and what a job she has done at Blairs.Ag. 32N is also the dam of the female Brandy Fettes has been successfully showing. Congratulations Brandy!

Pursuit of EXCELLENCE

BLAIR'S

47

RED BLAIRS SIN CITY 56X

BBC 56X May 08 2010 #1596141

RED NORTHLINE ATLANTIC CITY
RED WHEEL SIN CITY 43T
RED WHEEL PRIDE 16M

RED LAKEFORD KAPTON 7M
RED CCJ FAITH 18R
RED BAKERS FAITH 8L OSF

RED PIE ATLANTIC 2204 OSF MAF
RED NORTHLINE QUEEN 240H
RED CON AIR 55G
RED PTTV PRIDE 3'97 OSF
RED COMPASS KARGO 83K
RED CHOPPER K MISS CHIEF 7K
RED BAKERS CENTURY
RED BROX FAITH 17C

PERF	BW	205D	365D	EPDs	BW	WW	YW	Milk	TM
	82				2.4	21	51	11	22

A big hipped Sin City bull that is out of a foundation cow family here at Blair's. 56X's grand- dam, Faith 8L, has been very successful contributor to our ET program, the results being three flush brothers in the yearling pen. 56X's dam, Faith 18R, has only had bulls until this year so we are excited to have another Faith in our replacement heifer pen.



BLAIR'S

48

RED JCC PROWLER 9X

LEVI 9X March 13 2010 #1547641

RED BAR-E-L APPROVAL 4L
RED TER-RON PROWLER 833T
RED TER-RON ALYSA 233M

RED TER-RON MAMBO 28K
RED JCC SEREBL 26M
RED SYMBRAE SEREBL 062B

RED TER-RON CARLTON 810H
RED BAR-E-L CLASS 10J
RED LAZY MC DIVIDE 8J
RED TER-RON ASTER 733K
RED YY RED KNIGHT 640F OSF
RED ALDER ABG STAR DUST 8G
RED CUMNOCK ICEBERG 640W
RED SYMBRAE SEREBL 15X

PERF	BW	205D	365D	EPDs	BW	WW	YW	Milk	TM
	90	804			2.3	26	51	7	20

This Prowler son puts it all together in a real complete package. Prowler sired our high selling 2 year old red bull in last year's sale. 9X's dam is a super productive cow with and excellent udder. An impressive 800 lbs 205 weight, 9X will be a good investment.



Dam of Lot 46 - Red Lucky "C" Norma 32N



2012

JOHNSTON 9440 ANNIE K 0553J

5
SONS SELLBLAIR'S
49

BLAIRS NEXT GENERATION 207Y

BBC 207Y February 03 2011 #1644870

PERF	BW	205D	365D	EPDs	BW	WW	YW	Milk	TM	5 Star CE
	81				3.5	37	67	12		

O C C GENESIS 872G
DUFF NEW GENERATION 6107
 O C C DIXIE ERICA 814G

O C C DOCTOR 940D CAF
 BLACKBIRD OF R R 1204
 O C C ANCHOR 771A CAF
 O C C DIXIE ERICA 764C

BLAIR'S
50

BLAIRS NEW GENERATION 221Y

BBC 221Y February 09 2011 #1644880

PERF	BW	205D	365D	EPDs	BW	WW	YW	Milk	TM	5 Star CE
	98				3.5	37	67	12		

R R SCOTCHCAP 9440 AMF NHF
JOHNSTON 9440 ANNIE K 0553J
 JOHNSTON 12U ANNIE K 553F

SCOTCH CAP AMF CAF NHF
 BLACKCAP OF R R 5367
 BROOKSIDE BANDOLIER 12U
 JOHNSTON 2100 ANNIE K 554C

This is a flush we have been excited about since the mating was done and now we get to share the results. The pick of the heifer calves of this flush was a feature in our Genetics in Motion Sale and at the same sale, we were able to secure the dam Annie 0553J. Last year Michelson's consigned a great set of flush brother's off 0553J and G 13 Steel. This fall, at Agribition, a full flush brother sold to Bar E-L Angus, Hamilton Farms and Wilbar Farms for \$25,000. These calves have an amazing amount of breeding potential, so don't miss out!



49



GPR

50

Pursuit of EXCELLENCE

A powerful set of flush brothers that will combine phenotype, performance, and maternal cow family strength. These brothers sired by the many time champion EXAR Pit Boss 409 are explosive in their overall mass and power while still maintaining a killer look. They are big hipped, deep-sided, and extremely hairy bulls who are very sound and athletic in their movement. EXAR Pit Boss is now deceased and semen is very rare and near impossible to find. Their dam, Johnston 9440 Annie K 0553J, has been a very productive cow for us. She raised the 2010 National Champion female, MICH Annies Angel 35U, as well as the high selling bull in the 2011 Pursuit of Excellence Sale, MICH Steel 10X who sold to Kenbert Acres for \$9700. She is also the dam of one of the high selling bulls at last year's Power and Perfection sale where her and the Blairs.Ag herd sire, Duff New Generation, produced the \$25,000 son, Blairs New Generation 305Y, as well as the high selling heifer calf in the Genetics in Motion sale for \$10,000. She has proven herself time and again and these sons will only add value to her portfolio. The genetic make-up of these future herd bulls combining phenotype, maternal strength and power truly will provide a great opportunity this spring to add value to the most astute cattleman's program.

MICHELSON

51**MICH PIT BOSS 188Y**

MICH 188Y February 23 2011 #1655315

PERF	BW	205D	365D	EPDs	BW	WW	YW	Milk	TM
	80				2.8	48	83	18	

MICHELSON

52**MICH PIT BOSS 169Y**

MICH 169Y February 19 2011 #1655028

PERF	BW	205D	365D	EPDs	BW	WW	YW	Milk	TM
	80				2.8	48	83	18	

MICHELSON

53**MICH PIT BOSS 121Y**

MICH 121Y February 23 2011 #1655009

PERF	BW	205D	365D	EPDs	BW	WW	YW	Milk	TM
	82				2.8	48	83	18	

EXAR SUDDEN IMPACT 1537 AMF CAF NHF
EXAR PIT BOSS 409
 WK WINNIE 7305

R R SCOTCHCAP 9440 AMF NHF
JOHNSTON 9440 ANNIE K 0553J
 JOHNSTON 12U ANNIE K 553F

NORTHERN IMPROVEMENT 4480 GF AMF CAF NHF
 B L R BLUSHING PRIDE 9097
 KRUGERRANDS MONEYLINE
 WK WINNIE 5460
 SCOTCH CAP AMF CAF NHF
 BLACKCAP OF R R 5367
 BROOKSIDE BANDOLIER 12U
 JOHNSTON 2100 ANNIE K 554C



2012



MICHELSON

54

MICH S C PIT BOSS 17Y

MICH 17Y February 05 2011 #1654932

EXAR SUDDEN IMPACT 1537 AMF CAF NHF
EXAR PIT BOSS 409
 WK WINNIE 7305

RITO 616 OF 4B20 6807 AMF CAF NHF
EXAR WINNIE 6371 R3 AMF NHF
 EXAR WINNIE 4522

NORTHERN IMPROVEMENT 4480 GF AMF CAF NHF
 B L R BLUSHING PRIDE 9097
 KRUGERRANDS MONEYLINE
 WK WINNIE 5460
 D H D TRAVELER 6807 AMF NHF
 RITA 4820 OFB1 BANDO
 BR MIDLAND AMF CAF NHF
 EXAR WINNIE 2474

PERF	BW	205D	365D	EPDs	BW	WW	YW	Milk	TM
	87				2.4	49	85	20	45

MICH SC Pit Boss 17Y has been a favorite in the pen to anyone who has toured the bulls combining muscle and maternal value with his fault-free structure. His masculinity, early maturing, and super disposition will only add to his resume. Sired by EXAR Pit Boss 409 and out of a beautiful RITO 616 cow make 17Y a rare genetic find. MICH SC Pit Boss 17Y will add pounds and maternal strength to your program with lots of eye appeal and phenotype.



MICHELSON

55

MICH CONQUER 186Y

MICH 186Y February 27 2011 #1654933

H S A F BANDO 1961 AMF CAF NHF
BUSHS CONQUER 156 AMF CAF NHF
 BUSHS LADY BLACKBIRD 6563

F V 20K KING 308M AMF CAF NHF
S A V PRIDE 8869
 S A V PRIDE 6369

S A F 598 BANDO 5175 AMF CAC
 J K S MISS CHEYENNE 196
 LEMMON NEWSLINE C804 AMF CAF NHF
 BUSHS LADY GRAND 672
 RAFTER S RONAN TEX 20K
 QUEEN 362E
 S A V 8180 TRAVELER 004 AMF CAF NHF
 S A V PRIDE 3135

PERF	BW	205D	365D	EPDs	BW	WW	YW	Milk	TM
	84				2.9	51	92	29	54

MICH Conquer 186Y is a very stout, massive young bull with tremendous growth potential and maternal strength. He is long bodied, big boned and packed with horsepower to fuel you next calf crop. He is sired by the popular Semex bull BUSHS Conquer and out of a very young productive Schaff cow. He will sire calves with tremendous thickness, maternal strength and lots of eye appeal.



MICHELSON

56

MICH SC CONQUER 729Y

MICH 729Y March 30 2011 #1654983

H S A F BANDO 1961 AMF CAF NHF
BUSHS CONQUER 156 AMF CAF NHF
 BUSHS LADY BLACKBIRD 6563

S A V WALL STREET 7091 AMF CAF NHF
SC BREATHTAKING 906W
 SOUTHLAND MAKIN'OUT 17R

S A F 598 BANDO 5175 AMF CAC
 J K S MISS CHEYENNE 196
 LEMMON NEWSLINE C804 AMF CAF NHF
 BUSHS LADY GRAND 672
 S A V NET WORTH 4200 AMF CAF NHF
 CHAMPION HILL GEORGINA 2175
 TC FREEDOM 104 AMF CAF NHF
 SOUTHLAND DUCHESS 143J

PERF	BW	205D	365D	EPDs	BW	WW	YW	Milk	TM
	82								

SC MICH Conquer 729Y has been admired for his massive hip, muscle and phenotype. He is a moderate young bull with explosive muscle and mass. He is very correct in his make-up and sound in his movement and structure. His pedigree reads very high in maternal strength, power and phenotype. His dam, a first calver, sired by SAV Wallstreet, is a favorite to anyone who has seen her. She is sure to have a big future, as does her first son, featured here as Lot 56 Use SC MICH Conquer 729Y to downscale larger cows and add muscle and mass to your calf crop. Daughters will be very productive high maternal females.

Pursuit of EXCELLENCE

MAINSTREAM

57**MSG SONAR 46Y**

MSG 46Y March 04 2011 #1648282

S A V NET WORTH 4200 AMF CAF NHF
JL NET WORTH 07064
 HOWE MS ERICA 57N

VERMILION DATELINE 7078 AMF CAF NHF
MUIRHEAD'S MORRISON 46R
 DON WOOD MISS MORRISON 36M

S A V 8180 TRAVELER 004 AMF CAF NHF
 S A V MAY 2410
 EBON HILL LIBERTY 13'01
 HOWE MS ERICA 36L
 CONNEALY DATELINE
 VERMILION BLACKBIRD 5044
 TOWN N'COUNTRY TARZAN 5K
 DON WOOD MISS MORRISON 12K

PERF	BW	205D	365D	EPDs	BW	WW	YW	Milk	TM
	86								

MSG Sonar 46Y is a deep-ribbed, square-hipped bull that exhibits pronounced natural muscling. He is long spined and smooth shouldered, making him a bull that can be used on either heifers or cows. 46Y's length of spine will also add extra pounds to your calves at weaning. This March calf was a part of our show string at Agribition and will work in either a purebred or a commercial herd.



JACKSON

58**CCCJ MOTION 3Y**

TWIN CCCJ 3Y January 22 2011 #1627336

HF KODIAK 5R AMF CAF NHF MAF
SOO LINE MOTIVE 9016
 TLA BEAUTY 5R

S A V NET WORTH 4200 AMF CAF NHF
MVF ROSEBUD 72U
 LENLOOK ROSEBUD 30G

SANDY BAR ADVANTAGE 43M
 WILBAR RUBY 955N
 RR 7407 RAINMAKER 2154
 TERRELE BEAUTY 35F
 S A V 8180 TRAVELER 004 AMF CAF NHF
 S A V MAY 2410
 WHITSTONE FLY TRAVELER 3006 AMF CAF NHF
 LENLOOK ROSEBUD 6A

PERF	BW	205D	365D	EPDs	BW	WW	YW	Milk	TM
	62				1.0	52	91	23	48

A light birth weight calf from the calving ease sire Motive, who sold for \$55,000 for ½ interest at the National Western Stock Show in Denver 2010. Motive calves made a huge impact at the show and sales this past fall. 3Y's mother is a great Net Worth daughter. 3Y's EPDs are in the top 10% of the breed for BW, WW, YW and Milk. A brother, CCCJ 7X, sells as Lot #19.



BLAIR'S

59**BLAIRS PREDOMINANT 501Y**

BBC 501Y January 03 2011 #1637398

S A V 004 PREDOMINANT 4438 AMF CAF NHF
HF PREDOMINANT 213U
 HF ERICA 176P

VERMILION YELLOWSTONE AMF CAF NHF
DIAMOND T DAISY - V.Y. - 9909
 FLEMING 203 MAUREEN

S A V 8180 TRAVELER 004 AMF CAF NHF
 S A V EMBLYNETTE 1182
 RIVERBEND POWERLINE 0050
 HF ERICA 61F
 VERMILION DATELINE 7078 AMF CAF NHF
 VERMILION B JESTRESS 3912
 WAVY FAME 13H
 FLEMING 921 JENA

PERF	BW	205D	365D	EPDs	BW	WW	YW	Milk	TM
	80				2.4	53	96	21	

501Y'S dam is a very feminine-made moderate cow that we purchased at the Diamond T dispersal. He is a powerful growthy calf that has been one of the highest gainers since weaning.



Sire of Lots 55 & 56 - Bushs Conquer 156

2012



Dam of Lot 60 - MVF Lady Ann 935S



BLAIR'S

60

BLAIRS UPWARD 505Y

BBC 505Y January 10 2011 #1637401

CONNEALY ONWARD AMF CAF NHF
SITZ UPWARD 307R AMF CAF NHF
 SITZ HENRIETTA PRIDE 81M

G A R GRID MAKER AMF CAF NHF
MVF LADY ANN 935S
 BOTANY ANGUS LADY ANN 17J

CONNEALY LEAD ON AMF CAF NHF
 ALTUNE OF CONANGA 6104
 SITZ VALUE 7097 AMF CAF NHF
 SITZ HENRIETTA PRIDE 1370

G D A R TRAVELER 044 AMF CAF NHF
 G A R PRECISION 2536 AMC NHF
 MVMM WESTERN RITO 47F
 BOTANY ANGUS LADY ANN 41G

PERF	BW	205D	365D	EPDs	BW	WW	YW	Milk	TM
	90				4.2	64	123	31	

Check out the EPDs on this calf! 505Y is in the top 1% of the breed for weaning weight, yearling weight, milk, and total maternal. These EPDs put him in very elite company. Tibbie 935S is a powerful, sound young cow we purchased at the Mountain View dispersal and headed right into our ET program. Her first two sons are working in seed-stock herds and last year her son sold to Semex Beef. This is a cow you will be hearing from again.

BLAIR'S

61

BLAIRS NEW GENERATION 316Y

BBC 316Y March 06 2011 #1637433

O C C GENESIS 872G
DUFF NEW GENERATION 6107
 O C C DIXIE ERICA 814G

SITZ ALLIANCE 6595 AMF NHF
CARRUTHERS MAYFLOWER 19M
 CARRUTHERS MAYFLOWER 12J

O C C DOCTOR 940D CAF
 BLACKBIRD OF R R 1204
 O C C ANCHOR 771A CAF
 O C C DIXIE ERICA 764C

SITZ TRAVELER 8180 AMF CAF NHF
 SITZ BARBARAMERE JET 2698
 R R SCOTCHCAP 9440 AMF NHF
 CARRUTHERS MAYFLOWER 10E

PERF	BW	205D	365D	EPDs	BW	WW	YW	Milk	TM
	98				4.8	46	76	23	46

Here is another great New Generation son out of the powerful 19M cow that has Elite Dam status in the Canadian Angus Association's Herdbook. We sold a maternal sister to Johnson Livestock at Peebles in the Genetics in Motion Sale.



Pursuit of EXCELLENCE



Sire of Lots 62 - 64. Gumbo Gulch Creed 94S



Dam of Lots 62 - 64. DMM Miss Essence 21R

BLAIR'S

62**BLAIRS CREED 503Y**

BBC 503Y January 04 2011 #1644865

PERF	BW	205D	365D	EPDs	BW	WW	YW	Milk	TM
	92				7.4	44	77	27	

BLAIR'S

63**BLAIRS CREED 504Y**

BBC 504Y January 16 2011 #1644866

PERF	BW	205D	365D	EPDs	BW	WW	YW	Milk	TM
	96				7.4	44	77	27	

BLAIR'S

64**BLAIRS CREED 508Y**

BBC 508Y January 21 2011 #7143082

PERF	BW	205D	365D	EPDs	BW	WW	YW	Milk	TM
	90				7.4	44	77	27	

TC FREEDOM 104 AMF CAF NHF
GUMBO GULCH CREED 94S AMF NHF
 CASSIE OF GUMBO GULCH 58M

DMM MAKIN' WAVES 43M
DMM MISS ESSENCE 21R
 DMM MISS ESSENCE 90K

CONNELLY FOREFRONT AMF CAF NHF
 T C RUBY 9095 CAF
 BAR J P LEGEND 70K
 CASSIE OF GUMBO GULCH 43F
 DMM MAKIN' WAVES 82K
 DMM MISS ESSENCE 22K
 ANGUS ACRES BANDY 96X
 JRM MISS ESSENCE 8U

This is a special opportunity to buy full sibs to Miller Wilson's Essence 63W, who was the calf at side to DMM Essence 21R, winner of the female division of the Royal Bank Beef Supreme in 2009. You will have the first chance to buy a female from that flush this October at the Genetics in Motion Sale in Moose Jaw. The sire, Gumbo Gulch Creed, offers fresh genetics to Black Angus breeders.



Full sister to Lots 62 - 64. DMM Miss Essence 63W



2012



BLAIR'S

65

RED BLAIRS RELOAD 16Y

BBC 16Y February 19 2011 #1647333

PERF	BW	205D	365D	EPDs	BW	WW	YW	Milk	TM
	95				3.8	24	47	10	22

BLAIR'S

66

RED BLAIRS RELOAD 218Y

BBC 218Y February 09 2011 #1644877

PERF	BW	205D	365D	EPDs	BW	WW	YW	Milk	TM
	100				3.8	24	47	10	22

BLAIR'S

67

RED BLAIRS DOUBLE DEUCE 222Y

BBC 222Y February 09 2011 #1644879

PERF	BW	205D	365D	EPDs	BW	WW	YW	Milk	TM
	83				3.8	24	47	10	22

RED TER-RON FULLY LOADED 540R
RED TER-RON RELOAD 703T AMF CAF NHF OSF MAF
 RED TER-RON SAMARIA 103N

RED BAKERS CENTURY
RED BAKERS FAITH 8L OSF
 RED BROX FAITH 17C

RED HEARTLAND KNIGHT CHARM 11L
 RED TER-RON GOLDIE 240L
 RED BRYLOR SENSATION 6L
 RED NDCC FARGO SAMARIA 103L
 RED TOWAW MATRIX 19D
 RED MEM MINOLA 71E
 RED GET-A-LONG APACHE 135
 RED BRYLOR FAITH 33Y



Sire of Lots 65 - 69. Red Ter-Ron Reload 703T



Dam of Lots 65 - 67. Red Bakers Faith 8L

This is a definite sale feature. The dam, Faith 8L, is a foundation cow at Blairs.Ag, and she is a powerful cow that has proven herself through her production. We took two heifer calves out of this same flush to Denver and they found many friends at the stall and in the show ring, with one winning her class. The only hard part will be deciding which one to own! Or better yet, buy them all. These full brothers will deserve five stars on sale day.

Pursuit of EXCELLENCE



BLAIR'S

68

RED BLAIRS RELOAD 230Y

BBC 230Y February 19 2011 #1637423

RED TER-RON FULLY LOADED 540R
RED TER-RON RELOAD 703T AMF CAF NHF OSF MAF
 RED TER-RON SAMARIA 103N

RED TOWAW INTEGRITY 17M
RED JCC LASS 7R
 RED JCC LASS 41N

RED HEARTLAND KNIGHT CHARM 11L
 RED TER-RON GOLDIE 240L
 RED BRYLOR SENSATION 6L
 RED NDCC FARGO SAMARIA 103L
 RED TOWAW INDEED 104H OSF
 RED SHODEREE RAMBO 201D
 RED TER-RON MAMBO 28K
 RED JCC LASS 63K

PERF	BW	205D	365D	EPDs	BW	WW	YW	Milk	TM	CE
	94				0.9	26	51	20	33	

230Y is the maternal brother to our high selling bull last year who sold to McRae's Red Angus in Manitoba. He is a well-muscled, great haired calf that has loads of potential. At Blairs.Ag, we hold Lass 7R in very high regard. Lass 7R was the calf at side of Lass 41N when she was declared the 2005 Red Angus National Champion Female. If you need a sire with a fresh unique pedigree than 230Y will catch your attention.

BLAIR'S

69

RED BLAIRS RELOAD 228Y

BBC 228Y February 13 2011 #1644883

RED TER-RON FULLY LOADED 540R
RED TER-RON RELOAD 703T AMF CAF NHF OSF MAF
 RED TER-RON SAMARIA 103N

RED PREMIER PATRIOT 16
RED GOLDEN DAWN KURUBA 24L
 RED GEIS KURUBA 5'92

RED HEARTLAND KNIGHT CHARM 11L
 RED TER-RON GOLDIE 240L
 RED BRYLOR SENSATION 6L
 RED NDCC FARGO SAMARIA 103L
 SAYRE PATRIOT
 CAMILLA BELLE 54D
 RED KBJ SAM'S PROSPECTOR 133Z OSF
 THREE D KURUBA 36'86

PERF	BW	205D	365D	EPDs	BW	WW	YW	Milk	TM	CE
	92				2.0	22	47	14	25	

228Y's dam, Kuruba 24L, was one of our first investments and her production speaks for its self. Her Mulberry daughter, Kuruba 12T, was sold at Red Round-Up to Wild Cat Creek Ranch and another full sister will sell this October in the Genetics in Motion Sale. Red Ter-Ron Reload X Kuruba 24L clicked, and we think you will agree.



2012



BLAIR'S

70

RED BLAIRS FUSION 15Y

BBC 15Y February 12 2011 #1637417

RED U-2 BIG LEAGUE 544R
RED TER-RON TAHOE 141T
 RED TER-RON MISS IMPACT 141P

RED GOLD-BAR KING V415 107K
RED JCC BEATRICE 34N
 RED CASTLEMAIN CHEYENNE 599H

RED LCC MAJOR LEAGUE A502M OSF MAF
 RED U-2 ANEXA 09E
 RED TER-RON LOPEZ 811L
 RED TER-RON MISS IMPACT 41K
 RED BLAZE V415 OSF
 RED KENRAY MISS DAWN 114F
 RED MEM BARON 42E
 RED CASTLEMAIN BEATRICE 312F

PERF	BW	205D	365D	EPDs	BW	WW	YW	Milk	TM
	102				3.5	38	70	14	33

Fusion has been a stand out since spring and he was part of the show string all fall. He was the People's Choice winner at the Canadian Red Angus tour this summer and has continued to develop into a promising herdsire prospect. His dam is a very sound cow with tonnes of volume, and his sire Tahoe, is a big boned, well-muscled bull.



Dam of Lot 70 - Red JCC Beatrice 34N

Pursuit of EXCELLENCE

BLAIR'S

71

RED BLAIRS DAYTONA 1Y

BBC 1Y January 08 2011 #1637399

RED FINE LINE MULBERRY 26P AMF OSF MAF
RED BLAIR'S DAYTONA 116U
 RED JCC LASS 41N

RED BIEBER IMPACT 4399
RED CUTARM SANDY 885E
 RED CUTARM SANDY 662Y

RED COMPASS MULBERRY 449M
 RED DUS FAYETTE 8G
 RED TER-RON MAMBO 28K
 RED JCC LASS 63K
 RED T3 CHIEF 2887 OSF
 BIEBER SIERRA 3560
 RED BRA REDWHEEL 33T OSF
 RED RAFTER FL POTEET 154N

PERF	BW	205D	365D	EPDs	BW	WW	YW	Milk	TM
	72				1.8	34	65	19	36

When you find a bull calf out of a cow that is 17 years old, you should just buy it, as we all know that longevity is one of the keys to a profitable cowherd. The bonus is that this is a great calf off our Red Blair's Daytona 116U. 1Y is long and deep and is backed a great set of EPD's and an amazing cow family on both sides of his pedigree.

BLAIR'S

72

RED BLAIRS DAYTONA 12Y

BBC 12Y February 10 2011 #1637416

RED FINE LINE MULBERRY 26P AMF OSF MAF
RED BLAIR'S DAYTONA 116U
 RED JCC LASS 41N

RED TER-RON MAMBO 28K
RED JCC CHETA 50P
 RED JCC CHARO 19K

RED COMPASS MULBERRY 449M
 RED DUS FAYETTE 8G
 RED TER-RON MAMBO 28K
 RED JCC LASS 63K
 RED YY RED KNIGHT 640F OSF
 RED ALDER ABG STAR DUST 8G
 RED SSS BOMBER 907G
 RED JCC CHETA 2F

PERF	BW	205D	365D	EPDs	BW	WW	YW	Milk	TM
	89				1.9	37	72	14	

12Y is very attractive cool-fronted calf. His dam, Cheta 50P, is a beautiful angular Mambo cow with a great udder. 50P entered our donor program in 2011, and we anxiously await her 21 embryo calves in 2012. Daytona sons will improve your replacement pen.

BLAIR'S

73

RED BLAIRS DAYTONA 7Y

BBC 7Y January 22 2011 #1637407

RED FINE LINE MULBERRY 26P AMF OSF MAF
RED BLAIR'S DAYTONA 116U
 RED JCC LASS 41N

RED JCC WARRIOR 5K
RED JCC KAPI 109R
 RED TOP LINE KAPI 26L

RED COMPASS MULBERRY 449M
 RED DUS FAYETTE 8G
 RED TER-RON MAMBO 28K
 RED JCC LASS 63K
 RED JCC COWBOY 74G
 RED JCC MAHOGANY 7F
 RED VARA PRIME RIB 101J
 RED TOPLINE KAPI 51J

PERF	BW	205D	365D	EPDs	BW	WW	YW	Milk	TM
	93				1.4	21	51	16	26

7Y is a powerful Daytona son that stands out in the pen. His dam 109R is a deep, long bodied cow that has made it into our ET program. His full sister was purchased by Dwajo Angus at the Class of '10 sale at CWA. Kapi 109R has had two sons sell through previous Pursuit of Excellence sales to W2 Farms and TJ Farms.



Dam of Lot 73 - Red JCC Kapi 109R

BLAIR'S

74

RED BLAIRS COWBOY CUT 10Y

BBC 10Y February 01 2011 #1644867

RED LAZY MC STOUT 30S
RED LAZY MC COWBOY CUT 26U AMF NHF OSF MAF
 RED LAZY MC STAR 185M

RED YY RED KNIGHT 640F OSF
RED TER-RON DUSTY 98J
 RED ALDER ABG STAR DUST 8G

RED LAZY MC SMASH 41N OSF
 RED LAZY MC SCYTHIA 78N
 LAZY MC WORLDWIDE 5K
 RED LAZY MC STAR 100J
 RED YY 23L TOPPER 408D
 RED TOP GOLDIE 40U
 RED SSS BOOM TOWN 260D
 RED BRA STAR DUST 8B

PERF	BW	205D	365D	EPDs	BW	WW	YW	Milk	TM
	94				1.1	32	57	13	29

We have had great success using Red Ter-Ron Mambo in our program and jumped at the opportunity to flush his full sister. We flushed her to Cowboy Cut whose progeny have created a lot of excitement around the world. 10Y is one of the resulting progeny – check him out!

JACKSON

75

RED JCC ALLIANCE 7Y

LEVI 7Y January 28 2011 #1627998

RED NORTHLINE ATLANTIC CITY
RED WHEEL ALLIANCE 22U
 RED WHEEL AUBURN 2K

RED TER-RON MAMBO 28K
RED JCC COUNTRESS 9T
 RED JCC COUNTRESS 1L

RED PIE ATLANTIC 2204 OSF MAF
 RED NORTHLINE QUEEN 240H
 RED HANDFORD NONE BETTER 260D
 RED CRANSTON HERA 3G
 RED YY RED KNIGHT 640F OSF
 RED ALDER ABG STAR DUST 8G
 RED SSS BOMBER 907G
 RED JCC COUNTRESS 73J

PERF	BW	205D	365D	EPDs	BW	WW	YW	Milk	TM
	98	736			3.3	43	77	8	29

A real performance bull here, he's big, long, deep-sided and well balanced. Sired by one of the leading herd sires at the great Bar E L herd in Alberta. 7Y's dam is a great blend of performance and maternal with a beautiful udder and great disposition. 7Y is in the top 3% for weaning and the top 4% for yearling



cold hard CASH



Red Corner Creek Cash 2R
 CAA# 1290528
 Sire: Red PIE Atlantic 2204
 Dam: Red Northline Princess 59L

BW	WW	YW	M	TM
3.7	57	84	10	39

Top 1% WW, YW, REA & Carcass Weight

LIMITED TIME SEMEN SALES

Cash semen will only be available through Cattle in Motion online sales for the 2013 breeding season. These online sales will feature Cash semen, embryo's and select offspring. We have three sales scheduled for the first week of August, October and December.

WATCH FOR FUTURE ANNOUNCEMENTS





SEMEN
\$45/UNIT
 commercial & volume discounts
 Contact the owners.

POWER EYE

POWERFUL DESIGN. POWERFUL RED GENETICS. POWERFUL REPLICAS OF HIS EXCLUSIVE SIRE.



SooLine Power Eye 161X

RAAA# 1406779

DOB: February 2010

BW: 77 WW: 682 YW: 1225

Sire: Red Cockburn Ribeye 308U

*The popular \$70,000 SooLine sale topper
 (Bar EL Ribeye 103R x Wilbar Cora 443P)*

Dam: Red TR Lynn 301R

*A super producer that is moderate & stylish
 (Red Geis Knight Hawk x TR Lynn 105L)*

THE FIRST CALVES ARE ON THE GROUND AND THEY LOOK GREAT!

Wildcat Creek Ranch

Klee Watchous • Newton, Kansas
 316-799-1000 www.wildcatcreekranch.com

Blairs.Ag Cattle Co.

Kevin / Darren Blair • Lanigan, Saskatchewan
 306-365-7922 www.blairscattleco.com

J6 Farms

David / Charles Spencer • Gibbon, Nebraska
 308-627-6259 www.j6farms.com

BLAIRS.AG CATTLE CO.
BOX 610, LANIGAN SK S0K 2M0



Return postage guaranteed
Printed in Canada for free distribution

GENETICS... IN motion



OCTOBER 2012



 **Blairs.Ag**
CATTLE COMPANY

MOOSE JAW, SASKATCHEWAN
CANADA • 1 PM