

# GENETICS .....

IN **motion**



OCTOBER 16  
2011

 **Blairs<sup>+</sup>.Ag**  
CATTLE COMPANY  
MOOSE JAW, SASKATCHEWAN  
CANADA • **1 PM**

# GENETICS IN *motion*

## WELCOME TO THE SALE

I am extremely excited about writing this welcome letter to our 1st Genetics in Motion sale. The livestock industry has waited a lifetime for the market to get to this point and now is the time to position your program for the next 10 years.

We wanted our offering to be unique and at the same time provide a place to feature the Class of '11 Scholarship heifers. You will notice we have started a Miss Angus pageant of sorts. Every year we will offer top female's and/or donor's from our program under the Miss Angus concept. We will select 6 or 7 years to feature and nominate a female to represent each year. On top of that we are selecting a top donor out of our embryo program and will offer one each year. We are also excited to be offering one of our top black/red carrier females and will continue to offer one in each year's sale.

This year we wanted to make the offering even more special so we have added a pregnancy off the Monique 2K cow and Red Corner Creek Cash. Monique is the dam of the most talked about Red Diamond T Hips Stout that sold to Chatburn Farms for \$39,000 at Denver 2011 and Corner Creek Cash is fast becoming one of the leading sires in the breed.

We are committed to being your source of leading edge powerful outcross Angus genetics and would like to take this opportunity to invite you to Moose Jaw, Sask. Canada on Sunday, October 16th for the 1st Genetics in Motion sale.

See you sale day.

*Kevin Blair and The Blairs Ag Cattle Co. Genetic Advancement Team.*

**KEVIN & NOREEN BLAIR     DARREN & DEB BLAIR**

PO Box 610 • Lanigan, Saskatchewan S0K 2M0

Tel: cell (306) 365-7922 • office (306) 365-3150

Email: [kevin@blairs.ag](mailto:kevin@blairs.ag) [darren@blairs.ag](mailto:darren@blairs.ag)

**[www.blairscattleco.com](http://www.blairscattleco.com)**



# OCTOBER 16 :: 1PM :: MOOSE JAW, SK

## JOHNSTONE AUCTION MART

### SALE DAY PHONES

Kevin Blair .....	306-365-7922
Darren Blair.....	306-360-7707
Kelly Schmidt.....	306-365-7138
Chris Schmidt.....	306-946-7948
Patty Smith.....	306-528-7592
Craig Blair.....	306-699-7607
Levi Jackson.....	306-537-4690
Chad Haaland.....	306-544-7770
Blake MacMillan.....	306-528-7484
Travis MacPherson.....	306-360-8888
Shane Michelson.....	403-363-9973
Roger Hardy.....	306-458-7521

### AUCTIONEER

Brent Carey.....	403-650-9028
------------------	--------------

### RINGMEN

Mark Stock.....	403-357-8104
Ryan Dorran.....	403-507-6483
Nate Marin.....	306-869-7130

### SALE MARKETING AGENTS

#### *Bouchard Livestock*

Scott Bohrsen.....	403-370-3010
Geoff Anderson.....	306-731-7921
Ben Wright.....	519-374-3335
Bryan MacKenzie.....	403-627-8266
Kent McCune.....	817-602-8629

### SPECIAL GUESTS

Brian Good - Canadian Angus Assoc. Commercial Fieldman

### PHOTOGRAPHER

Kent McCune

### SCHEDULE OF EVENTS

*October 14th & 15th:* Cattle onsite at Johnstone's for viewing  
(4 miles west of Moose Jaw on Hwy #1)

*Saturday, October 15th:* Cattle Previewing

*Sunday, October 16th:* 11:30 am - Join us for lunch prior to sale  
1:00 pm - Sale Time

### SIGHT UNSEEN PURCHASES

If you are unable to make the sale, we will help you with your selection and guarantee your satisfaction!

### ACCOMMODATIONS

Days Inn :: Moose Jaw, SK 306-691-5777

Block of rooms held under Blairs.Ag Cattle Co.

### ONLINE CATALOGUE & VIDEOS

[www.blairscattleco.com](http://www.blairscattleco.com) & [www.cattleinmotion.com](http://www.cattleinmotion.com)

### ONLINE BIDDING

[www.cimauctions.com](http://www.cimauctions.com)



### PLAN YOUR TRIP

- Friday, October 14th - SooLine "Heart of the Herd" Production Sale  
*Midale, SK*
- Saturday, October 15th - Six Mile "Focused on Females" Sale  
*Fir Mountain, SK*
- Sunday, October 16th - Genetics in Motion  
*Moose Jaw, SK*
- Monday, October 17th - Wednesday, October 19th  
Remington Land & Cattle "The Final Drive" Dispersal  
*Del Bonita, AB*

# GENETICS

IN **motion**



# GENETIC ADVANCEMENT TEAM



Kevin



Darren



Patty



Chad & Carissa Haaland and family



Craig



Chris



Kelly



Levi & Carmen Jackson, Chance, Dakota

## GUEST CONSIGNORS



### Mainstream Genetics

Chris, Jasmine, Davis and Jenna Schmidt  
Box 72  
Watrous, Saskatchewan  
S0K 4T0  
Phone: (306) 946-2616  
Cell: (306) 946-7948



### Nexera Land and Cattle

Kelly, Paula, Hadley and Tate Schmidt  
Box 111  
Drake, Saskatchewan  
S0K 1H0  
Phone: (306) 363-2229  
Cell: (306) 365-7138



### Michelson Land and Cattle

Shane & Alaina Michelson and family  
Box 343  
Lipton, Saskatchewan  
S0G 3B0  
Phone: (306) 336-2622  
Cell: (306) 363-9973



### SooLine Cattle Company

Roger Hardy & Family  
P.O. Box 300  
Midale, Sask.  
S0C 1S0  
Phone: 306-458-2323  
Email: sooline@signaldirect.ca

# FEATURE DONOR



RED JCC SANDY 63S



## RED JCC SANDY 63S

Tattoo: LEVI 63S Registration #1343520 BD: April 06, 2006

**SIRE:**

RED NORTHLINE ROB ROY 122K OSF MAF  
RED SOUTHLAND EPIC 81P  
RED LITTLE DE MS CONTI 940F

**DAM:**

RED LAZY MC THIRTY X 22L  
RED JCC SANDY 20N  
RED CUTARM SANDY 885E

RED WILD ROSE ROBIN HOOD 11F  
RED BAR EL SYBIL 122E  
RED LITTLE DE STARBUCK 613C  
RED MISS CONTINENTAL 6U  
RED LAZY MC DIVIDE 8J  
RED LAZY MC WATCH ME 26F  
RED BIEBER IMPACT 4399  
RED CUTARM SANDY 662Y

BW: 85 lbs. EPD's BW +2.1 WW +17 YW +40 Milk +22 TM +31

AI'd to Red Blair's Daytona 116U May 6th. Exposed to Red Corner Creek Cash 2R May 17th to May 27th and Red WAF Cachafaz 351U May 28th - August 1st.

Every year we will be offering a proven feature donor and Sandy 63S is a fantastic start to that tradition. Sandy averages 18 embryo's per flush and has been a favorite of all who have seen her. She is powerful, big ribbed and that cherry red color that we all strive for. She has tremendous muscle and rib shape and at the same time has tremendous fertility with a highly maternal pedigree. Her pedigree is full of breed greats like Northline Rob Roy, Lazy MC Divide and Bieber Impact. Sandy's grand dam, Sandy 885E, is still producing in our herd and has a tremendous Daytona bull calf that will be a feature in our Pursuit of Excellence '12 bull sale. If you want a donor cow that will take your program to a new level then Sandy 63S is the answer.

GENETICS  
IN motion



# Miss 2002



RED COCKBURN MS FANNY 191M

BLAIRS.AG

2

## RED COCKBURN MS FANNY 191M

Tattoo: CWJ 191M Registration #1142078 BD: February 25, 2002

**SIRE:**

RED FLYING K PATRIOT 16B  
RED T-S PATRIOT 84K  
RED CFRA BEEFSTEAK 5F

**DAM:**

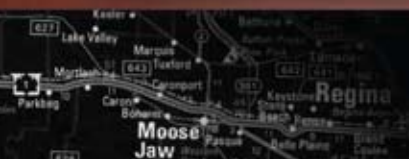
RED TASSEL PINNACLE 203C  
RED COCKBURN FANNY 50H  
RED SHODEREE FANNY 28E

RED PREMIER PATRIOT 16  
RED FLYING K MISS SUIJI 62W  
RED CROSSFIRE BEEFSTEAK 52D  
RED CFRA BASHER'S BELLE 5D  
RED LMAN KILOWATT 8791  
RED TASSEL LANA 15A  
RED MEADOW CK BOOTJACK 5B  
RED CY FANNY 28U

BW: 82 lbs. EPD's BW +4.2 WW +35 YW +65 Milk +10 TM +27

*AI'd to Red Corner Creek Cash 2R May 6th. Exposed to Red Corner Creek Cash 2R May 17th to May 27th and Red WAF Cachafaz 351U May 28th - August 1st.*

Well where do I start? Donor cows like Fanny 191M don't come for sale. She is the kind that everyone tries to find or raise but nobody sells. Fanny is for sale for one reason only and that is because this is the inaugural Genetics in Motion sale and we wanted to show the depth of our cowherd. Fanny is chalked full of power with a gorgeous udder and comes off the great Red T-S Patriot 84K. If you tour the cowherd at Ward Cockburn's you will see a powerful set of Patriot daughters that anyone would love to own and a full sister that has done great things for Ward. Her picture says it all. This is a rare opportunity.



# Miss 2003



RED LUCKY C NISSAN 58N



## RED LUCKY C NISSAN 58N

Tattoo: ADC 58N Registration #1147058 BD: February 07, 2003

### SIRE:

RED LCHMN GRND CANYON 1244G MAF OSC  
RED LCC SOUTHERN KING 1765K OSC  
RED LCHMN LARKABA E1149

### DAM:

RED SHODEREE RAMBO 122D  
RED PIPESTONE HOLIDAY 63H  
RED COULEE CREST BARONESS 16C

RED BUF CRK CHF 824-1658 MAF OSC  
RED KRN REBA'S ROBIN OSF  
RED LMAN KING ROB 8621 OSF MAF  
RED LMAN LARKABA 9382  
RED GRL SIR RAMBO 9A  
RED LUK INATEX 122W  
RED KBJ SAM'S PROSPECTOR 133Z OSF MAF  
RED RBRTS BARONESS 9815

BW: 94 lbs. EPD's BW +2.5 WW +33 YW +64 Milk +22 TM +39

*Sells open and ready to flush.*

A few years ago we made a very wise decision to attend the Lucky C dispersal and found a group of females that flat work and have been the envy of everyone who has seen them. 58N is on the list to enter into our flush program for 2012 and therefore comes to you open and ready to flush. She is the perfect Angus cow with rib shape and performance. She is a gem to work with and is one of those cows that stays in great condition. Predictability and performance all wrapped in one.

**GENETICS** ...  
IN **motion**



# Miss 2004



RED JCC ELORA 71P



## RED JCC ELORA 71P

Tattoo: LEVI 71P Registration #1221724 BD: March 29, 2004

**SIRE:** RED SSS BOMBER 907G  
RED JCC FREEDOM 82L  
RED JCC YONSOTTU 38F

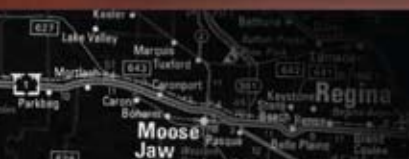
**DAM:** RED BULL POWER SS  
RED CUTARM ELORA 824Z  
RED CUTARM FLORA 408R

RED SSS BOOMER 803B  
RED CROWFOOT KATE 435D  
RED PIPESTONE DRESDEN 3D  
RED CUTARM YONSOTTU 213B  
S S PINE TAR 9U  
ANN S S 54T  
RED RAB 202 436-P830  
RED RAFTER FL POTEET 154N

BW: 76 lbs. EPD's BW -0.8 WW +25 YW +42 Milk +14 TM +27

Elora 71P is a half sister to the \$15,000 Elora 203N that sold in the SooLine Cattle Co. dispersal to Wildcat Creek Ranch in Kansas. 71P has proven her consistency and is that deep cherry red. She can raise bulls and females alike. Model Angus, great udder and predictable. Her 2010 bred heifer sells today as Lot #42.

Exposed to Red WAF Cachafaz 351U June 11th - August 1st.





# Miss 2005



RED DAK KURUBA 12R



## RED DAK KURUBA 12R

Tattoo: DAK 12R Registration #1275639 BD: March 12, 2005 TW

**SIRE:** RED SSS Bomber 907G  
RED JCC Freedom 82L  
RED JCC Yonsottu 38F

**DAM:** RED Ter-Ron Mambo 28K  
RED JCC Kuruba 5M  
RED JCC Kuruba 16K

RED SSS Boomer 803B  
RED Crowfoot Kate 435D  
RED Pipestone Dresden 3D  
RED Cutarm Yonsottu 213B  
RED YY Red Knight 640F OSF  
RED Alder ABG Star Dust 8G  
RED SSS Bomber 907G  
RED Lumont Kuruba Redman 200W

BW: 75 lbs. EPD's BW +1.5 WW +29 YW +52 Milk +2 TM +17

Exposed to Red WAF Cachafaz 351U June 11th - August 1st.

The Kuruba family continues to shine at Blairs.Ag Cattle Co. 12R was purchased as a bred heifer at the Jackson Cattle Co. dispersal and has produced ever since. The pedigree is full of proven Jackson genetics like Bomber 907G, Yonsottu 38F, the infamous Ter-Ron Mambo and the Kuruba 16K cow that has raised our last two Red Roundup heifers that sold to Amy Raines and Stacey Simpson. Ask the Simpson girls what they think about the Kuruba 16K offspring. Her first offspring sells today as Miss 2007 Kuruba 11T (Lot #7).

GENETICS  
IN motion

# Miss 2006



RED PV LULU 402S



## RED PV LULU 402S

Tattoo: PVF 402S Registration #1365225 BD: February 10, 2006

**SIRE:** RED YY STORM 901J  
RED SLC STORM 225P  
RED SLC PRALEE 188G

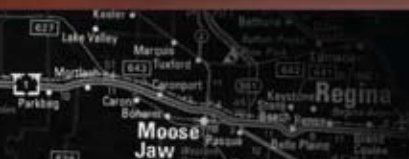
**DAM:** RED BJD KERMIT 95K  
RED CRIPPS LULU 430P  
RED WBR MISS STORM ALONG 102E

RED YY 408D TOP GUN 614F  
RED DEVOLANE ROSE 29B  
RED SSS BAR-NONE 313D  
RED TASSEL PRALEE 163W  
RED WILD ROSE NONE BETTER 147G  
RED BJD EVELYN 93E  
RED DAN'S ROCKET 6'92  
RED MAC MISS N LULU 26L

BW: 91 lbs. EPD's BW +4.3 WW +32 YW +57 Milk +17 TM +33

*Sells Open and Ready to Flush*

Lulu 402S comes right out of our donor pen and is a tough one to part with. We see a bright future for this outcross donor. She comes with a perfect udder, a great hip and loads of performance. We are anxious to see her embryo calves in 2012. Her heifer calf sells as Lot #41.





# Miss 2007



RED BLAIR'S KURUBA 11T



## RED BLAIR'S KURUBA 11T

Tattoo: BBC 11T Registration #1385817 BD: February 12, 2007

**SIRE:**

RED NORTHLINE ROB ROY 122K OSF MAF  
RED SOUTHLAND EPIC 81P  
RED LITTLE DE MS CONTI 940F

**DAM:**

RED JCC FREEDOM 82L  
RED DAK KURUBA 12R  
RED JCC KURUBA 5M

RED WILD ROSE ROBIN HOOD 11F  
RED BAR EL SYBIL 122E  
RED LITTLE DE STARBUCK 613C  
RED MISS CONTINENTAL 6U  
RED SSS BOMBER 907G  
RED JCC YONSOTTU 38F  
RED TER-RON MAMBO 28K  
RED JCC KURUBA 16K

BW: 79 lbs. EPD's BW +2.3 WW +24 YW +49 Milk +8 TM +20

Exposed to Red WAF Cachafaz 351U June 11th - August 1st.

Mother daughter combinations in sales are always cool but often rare. In this case we are offering a mother and daughter in Kuruba 12R and Kuruba 11T. These two are that perfect Angus cow type. Kuruba 11T also has the added benefit of coming off the Northline Rob Roy son, Red Southline Epic 81P, that worked so well at Jackson Cattle Company. Look into the future of Kuruba 11T and I think you will love what you see.

GENETICS...  
IN motion



# Dam of 2010 National Champion Female



JOHNSTON 9440 ANNIE K 0553J



**JOHNSTON 9440 ANNIE K 0553J**

Tattoo: DJ 0553J Registration #980065 BD: February 25, 1999

**SIRE:** SCOTCH CAP AMF NHF CAF  
R R SCOTCHCAP 9440 AMF NHF  
BLACKCAP OF R R 5367

**DAM:** BROOKSIDE BANDOLIER 12U  
JOHNSTON 12U ANNIE K 553F  
JOHNSTON 2100 ANNIE K 554C

P S POWER PLAY  
HOFF BAND 07 OF S C 509  
R R VANTAGE 3352  
BLACKCAP OF R R 0238

ANGUS ACRES BANDOLIER 76N  
BROOKSIDE ROSEBUD 25L  
RITO 2100 G D A R  
DOUBLE AA ANNIE K 512'81

BW: 81 lbs. EPD's BW +2.9 WW +34 YW +65 Milk +8 TM +25

Exposed to RC Wiley Post 9304B EXAR June 3rd - August 31st.



MICH ANNIE'S ANGEL 35U

Annie K 0553J is the very first Angus cow we had purchased when we decided to get involved in the Black Angus business and what a start it has been. 0553J has certainly exceeded our expectations as she hasn't missed a beat. She is the dam of MICH Annie's Angel 35U who was the National Champion Female in 2010 as well as the Canadian Western Agribition Champion Female for the Michelson and Serhienko team. Her flush ET brothers were a true highlight at the Blair's Pursuit of Excellence Bull Sale this spring with the high selling bull being purchased by Kenbert Acres. There is a tremendous set of embryo calves sired by Duff New Generation and 0553J that the Blairs.Ag team will be promoting and building around. 0553J is a solid beef making machine that excels in overall power, phenotype and performance. She is as sound and big footed as you can get with tremendous udder quality and loads of hair. She can be mated many different ways with the end result always being positive. Don't overlook a true breeding piece with a proven track record to add to your program. **Consigned by Michelson Land & Cattle.**

# Selling Choice of Three Full Sibs



BLAIR'S ANNIE K 227Y

BLAIRS.AG  
**9A**

**BLAIRS ANNIE K 213Y**

Tattoo BBC 213Y Registration # 130737 B.D February 7, 2011

BLAIRS.AG  
**9B**

**BLAIRS ANNIE K 214Y**

Tattoo BBC 214Y Registration # 143098 B.D February 7, 2011

BLAIRS.AG  
**9C**

**BLAIRS ANNIE K 227Y**

Tattoo BBC 227Y Registration # 143110 B.D February 11, 2011

**SIRE:**

O C C GENESIS 872G  
DUFF NEW GENERATION 6107  
O C C DIXIE ERICA 814G

**DAM:**

R R SCOTCHCAP 9440 AMF NHF  
JOHNSTON 9440 ANNIE K 0553J  
JOHNSTON 12U ANNIE K 553F

O C C DOCTOR 940D CAF  
BLACKBIRD OF R R 1204  
O C C ANCHOR 771A CAF  
O C C DIXIE ERICA 764C

SCOTCH CAP AMF NHF CAF  
BLACKCAP OF R R 5367  
BROOKSIDE BANDOLIER 12U  
JOHNSTON 2100 ANNIE K 554C

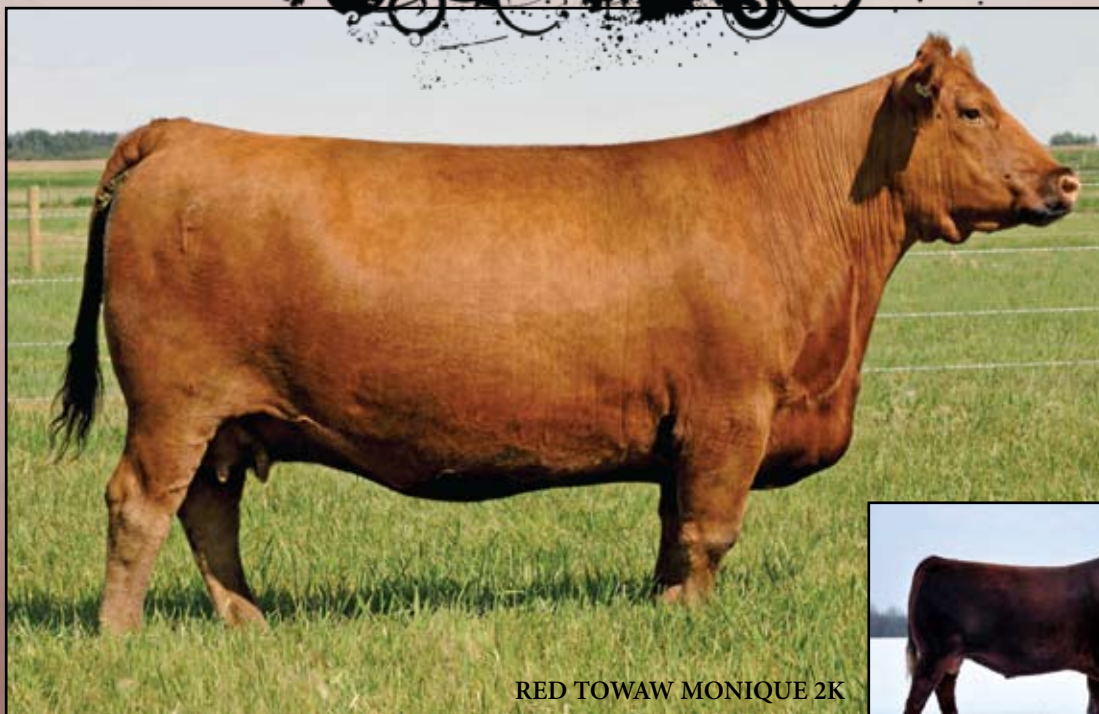
PE EPD's BW +3.3 WW +36 YW +65 Milk +13 TM +31

Lot 9 is extremely exciting to us and I think you will feel the same. We bought a flush off DJ 0553J from Michelson Land & Cattle and of course had one plan. That was to flush her to Duff New Generation 6107. We had a very successful flush and are offering a choice on the resulting heifer calves from 2011. These heifers are soft made, haired up powerful unique heifers. This flush also produced some top bull calves and we had one on display at our summer tour. Dave Longshore can tell you how good that mating is. On sale day we will bring all three heifers in the ring and you will pick one and we will keep the other two. The interesting twist on this is that Shane has agreed to sell the 0553J cow and she will be a definite sale feature. This choice lot will be one that is talked about for a long time.

**GENETICS** .....  
IN **motion**



# Pregnancy from the Dam of the \$39,000 Red Diamond T Hips Stout



RED TOWAW MONIQUE 2K



RED DIAMOND T HIPS STOUT



## CASH x MONIQUE 2K

Recipient Dam With 60 Day Confirmed Pregnancy

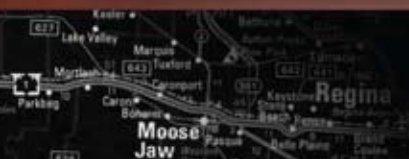
**SIRE:** RED PIE ATLANTIC 2204 OSF MAF  
RED CORNER CREEK CASH 2R MAF OSF  
RED NORTHLINE PRINCESS 59L

**DAM:** RED BJR JR 107 OSF MAF  
RED TOWAW MONIQUE 2K  
RED TWIN D MONIQUE 811H

RED COLE MISTER E 9J  
RED PIE BOTEET 899  
RED NORTHLINE KING 305J  
RED KWS ROCKY PRINCESS 59J  
LMB JOHNY REB 091  
RED BJR TIDY BEE 677-6186  
RED RIBLONG SAWYER 22E  
RED L4 MONIQUE 522D

Projected EPD's BW +0.6 WW +35 YW +51 Milk +19 TM +36

Monique 2K - Remember that name! Here may be the opportunity of the year. We need to thank Bryan Mackenzie for a call he made to us letting us know about a little cow at the Diamond T dispersal. She just happened to be the powerful dam to the Red Diamond T Hips Stout bull that sold to Bryan Mackenzie and Dave Sibbald and then was resold in Denver for \$39,000 to Chattburn Farms. We couldn't wait to get Monique 2K into our donor program at DRI and now we are excited to offer a pregnant recip off the mating of Red Corner Creek Cash 2R x Monique 2K. This is an opportunity that is both cool and unique for sure. Step up and be noticed and put yourself ahead of the pack. The recipient dam is a 60 day confirmed pregnancy.





# FEATURE BLACK/RED CARRIER



BLAIRS MABEL 68X



DUFF NEW GENERATION 6107



## BLAIRS MABEL 68X

Tattoo: BBC 68X Registration #1585617 BD: May 11, 2010

### SIRE:

O C C GENESIS 872G  
DUFF NEW GENERATION 6107  
O C C DIXIE ERICA 814G

### DAM:

RED NORTHLINE EQUALIZER 189N  
RED SOUTHLAND MABEL 36S  
RED SOUTHLAND MABEL 61P  
O C C DOCTOR 940D CAF  
BLACKBIRD OF R R 1204  
O C C ANCHOR 771A CAF  
O C C DIXIE ERICA 764C  
DURLOWE JESTER 34L  
NORTHLINE LADY 189K  
RED NORTHLINE ROB ROY 122K OSF MAF  
RED LITTLE DE MABEL 121H

BW: 71 lbs. EPD's BW +1.9 WW +15 YW +37 Milk +23 TM +23

Exposed May 18th - Aug 5th Carruthers Game Day 18X.

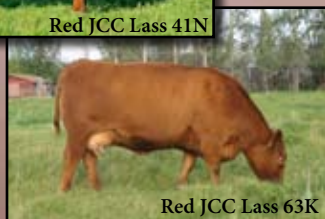
This is a very unique opportunity to select the top bred heifer out of our black/red carrier program off the great Duff New Generation 6107. Every year we are planning on selling a top candidate out of that program and this one is extremely special. Mabel 68X comes off a great Southland cow that we will be putting into our donor program in 2012. Mabel 68X has been the top of the 2010 black/red carrier program since birth. You will not find an outcross pedigree like this anywhere in the land. Look at the pedigree and see the OCC breeding and also the outcross Durlowe Jester as well as the proven maternal genetics of Rob Roy. Take this opportunity seriously!

Proven, Rare and Darn Cool is what we call this offering. We are selling this lot as a pair so one price will get you two unique genetic gems. The Lass family is well known in the Red Angus business and Lass 221W is a full sister to the great 2005 National Champion Female - Lass 41N. The Hamley bull calf at side is very cool and will be a breed changer. He has that unique pedigree and look. Hamley semen is off the market in Canada and will only be offered in select locations. Lass 63K has done nothing but make money for Jackson Cattle Co. and now Blairs.Ag Cattle Co. and Nexera Land & Cattle. Take a serious look!!

**Owned with Nexera Land & Cattle.**



Red JCC Lass 41N



Red JCC Lass 63K



RED BLAIRS LASS 219X

Lass 63K and Mambo is a mating that flat works. If you need genetics that will add predictability to your herd then sweep the ring on these two bred heifers. These heifers are full sibs to the Lass 221W (Lot #12) and also to the 2005 National Champion, Lass 41N. **Owned with Nexera Land & Cattle.**



## RED BLAIR'S LASS 221W

Tattoo: BNC 221W Registration #1542614 BD: March 01, 2009

**SIRE:** RED YY RED KNIGHT 640F OSF  
RED TER-RON MAMBO 28K  
RED ALDER ABG STAR DUST 8G

**DAM:** RED SSS BOMBER 907G  
RED JCC LASS 63K  
RED CUTARM YONSOTTU 247B

RED YY 23L TOPPER 408D  
RED TOP GOLDIE 40U  
RED SSS BOOM TOWN 260D  
RED BRA STAR DUST 8B  
RED SSS BOOMER 803B  
RED CROWFOOT KATE 435D  
RED DEKAP RED DALLES 345  
RED CUTARM YONSOTTU 718Y

BW: 94 lbs. EPD's BW +1.8 WW +30 YW +57 Milk +5 TM +20

*Bred May 17th to Red Corner Creek Cash 2R and Exposed May 26th - July 10th to Red Ringstead Kargo 215U.*



## RED BNC HAMLEY 13Y

Tattoo: BNC 13Y Registration #1637353 BD: February 10, 2011

**SIRE:** RED PIE BILLINGS 487 OSF  
RED NBAR HAMLEY S913 OSF  
RED NBAR KELLY 913

RED PERKS ADVANCE 121R OSF  
RED PIE RAMBO'S PRIDE 0289  
RED NBAR DANCE 531  
RED NBAR KELLY 700

BW: 83 lbs. EPD's BW +1.0 WW +29 YW +52 Milk +9

## Full Sibs to Champion Female Lass 41N



## RED BLAIRS LASS 219X

Tattoo: BNC 219X Registration #1588496 BD: February 06, 2010

*AI'd to N Bar Hamley April 25th. Exposed April 26th - May 17th to Red Ringstead Kargo 443W and May 18th - Aug 5th to Carruthers Game Day 18X.*



## RED BLAIRS LASS 226X

Tattoo: BNC 226X Registration #1588483 BD: February 15, 2010

**SIRE:** RED YY RED KNIGHT 640F OSF  
RED TER-RON MAMBO 28K  
RED ALDER ABG STAR DUST 8G

**DAM:** RED SSS BOMBER 907G  
RED JCC LASS 63K  
RED CUTARM YONSOTTU 247B

RED YY 23L TOPPER 408D  
RED TOP GOLDIE 40U  
RED SSS BOOM TOWN 260D  
RED BRA STAR DUST 8B  
RED SSS BOOMER 803B  
RED CROWFOOT KATE 435D  
RED DEKAP RED DALLES 345  
RED CUTARM YONSOTTU 718Y

EPD's BW +1.8 WW +30 YW +57 Milk +5 TM +20

*AI'd to N Bar Hamley April 14th. Exposed April 25th - May 17th to Red Ringstead Kargo 443W and May 18th - Aug 5th to Carruthers Game Day 18X.*



# Unique Opportunity



RED BLAIRS LASS 207X



## RED BLAIRS LASS 207X

Tattoo: BBC 207X Registration #1588488 BD: January 09, 2010

**SIRE:** RED PIE ATLANTIC 2204 OSF MAF  
RED CORNER CREEK CASH 2R MAF OSF  
RED NORTHLINE PRINCESS 59L

**DAM:** RED TER-RON MAMBO 28K  
RED JCC LASS 41N  
RED JCC LASS 63K

RED COLE MISTER E 9J  
RED PIE BOTEET 899  
RED NORTHLINE KING 305J  
RED KWS ROCKY PRINCESS 59J  
RED YY RED KNIGHT 640F OSF  
RED ALDER ABG STAR DUST 8G  
RED SSS BOMBER 907G  
RED CUTARM YONSOTTU 247B

BW: 76 lbs. EPD's BW +2.9 WW +43 YW +71 Milk +13 TM +34

*AI'd to N Bar Hamley April 14th. Exposed Exposed April 25th - May 17th to Red Ringstead Kargo 443W and May 18th - Aug 5th to Carruthers Game Day 18X.*

Lass 207X has always been a favorite because she combines the proven genetics of Red Corner Creek Cash with the National Champion Female, Lass 41N. Red Blairs Lass 207X will be a special addition to your program.

GENETICS...  
IN motion



# Sandy Family



RED BLAIR'S SANDY 18T



## RED BLAIR'S SANDY 18T

Tattoo: BBC 18T Registration #1385820 BD: February 26, 2007

**SIRE:** RED YY RED KNIGHT 640F OSF  
RED TER-RON MAMBO 28K  
RED ALDER ABG STAR DUST 8G

RED YY 23L TOPPER 408D  
RED TOP GOLDIE 40U  
RED SSS BOOM TOWN 260D  
RED BRA STAR DUST 8B

**DAM:** RED JCC WARRIOR 5K  
RED JCC SANDY 113N  
RED JCC SANDY 39L

RED JCC COWBOY 74G  
RED JCC MAHOGANY 7F  
RED SSS BOMBER 907G  
RED CUTARM SANDY 662Y

BW: 80 lbs. EPD's BW +2.1 WW +39 YW +77 Milk +7 TM +26

Exposed to Red Wheel Sin City 43T June 1st - August 10th.



## RED BLAIRS SANDY 47Y

Tattoo: BBC 47Y Registration #1637450 BD: April 18, 2011

**SIRE:** RED NORTHLINE ATLANTIC CITY  
RED WHEEL SIN CITY 43T  
RED WHEEL PRIDE 16M

RED PIE ATLANTIC 2204 OSF MAF  
RED NORTHLINE QUEEN 240H  
RED CON AIR 55G  
RED PTTV PRIDE 3'97 OSF

BW: 77 lbs. EPD's BW +1.4 WW +39 YW +82 Milk +12

Here is a great Mambo off the Sandy 113N donor cow. Sandy 18T was Champion Female as a bred heifer at Saskatoon Fall Fair and was also a two time World Angus Forum Futurity Champion. We thought it would be cool to sell 18T with her April Sin City heifer calf. Look into the pedigree of 18T and you will see the highly productive 39L cow that is still working in our donor program. Predictability and productivity is on both sides of this pedigree. Sandy 18T and Sandy 47Y sell today as a pair and one money takes them both. Now look for the full sibs to Sandy 18T that sell as Sandy 204X and Sandy 206X. Where do you get the chance to buy three full sisters all in one place? This is a rare opportunity.

**Co-owned with Jenna Schmidt, Watrous, SK.**





RED BLAIR'S SANDY 204X



RED BLAIR'S SANDY 206X



## RED BLAIRS SANDY 204X

Tattoo: BBC 204X Registration #1588485 BD: January 04, 2010

**SIRE:** RED YY RED KNIGHT 640F OSF  
RED TER-RON MAMBO 28K  
RED ALDER ABG STAR DUST 8G

**DAM:** RED JCC WARRIOR 5K  
RED JCC SANDY 113N  
RED JCC SANDY 39L

RED YY 23L TOPPER 408D  
RED TOP GOLDIE 40U  
RED SSS BOOM TOWN 260D  
RED BRA STAR DUST 8B  
RED JCC COWBOY 74G  
RED JCC MAHOGANY 7F  
RED SSS BOMBER 907G  
RED CUTARM SANDY 662Y

BW: 87 lbs. EPD's BW +1.9 WW +34 YW +70 Milk +6 TM +23

*AI'd to N Bar Hamley April 25th. Exposed April 26th - May 17th to Red Ringstead Kargo 443W and May 18th - Aug 5th Carruthers Game Day 18X.*



## RED BLAIRS SANDY 206X

Tattoo: BBC 206X Registration #1588487 BD: January 09, 2010

**SIRE:** RED YY RED KNIGHT 640F OSF  
RED TER-RON MAMBO 28K  
RED ALDER ABG STAR DUST 8G

**DAM:** RED JCC WARRIOR 5K  
RED JCC SANDY 113N  
RED JCC SANDY 39L

RED YY 23L TOPPER 408D  
RED TOP GOLDIE 40U  
RED SSS BOOM TOWN 260D  
RED BRA STAR DUST 8B  
RED JCC COWBOY 74G  
RED JCC MAHOGANY 7F  
RED SSS BOMBER 907G  
RED CUTARM SANDY 662Y

BW: 80 lbs. EPD's BW +1.9 WW +34 YW +70 Milk +6 TM +23

*AI'd to N Bar Hamley April 25th. Exposed April 26th - May 17th to Red Ringstead Kargo 443W and May 18th - Aug 5th Carruthers Game Day 18X.*



These Sandy heifers are full sisters to the Sandy 18T cow that sells today and was also Champion Female at Saskatoon Fall Fair as a bred heifer. Sandy 18T was also the World Angus Forum Futurity winner two years in a row. These heifers will make exceptional cows and I would suggest you own them both.

GENETICS...  
IN motion



# WIN the shows... and your *Dreams*

Take home a banner and a scholarship.



JUNIOR SCHOLARSHIP PROGRAM  
BLAIRS.AG CATTLE CO.



Do you want to be a *pilot*?  
An *agronomist*?  
An *Angus breeder*?

Whatever you want, you can be. And we want to help  
you get there by contributing to your education fund.  
Start collecting scholarships with a Blairs.Ag heifer.

Check our websites for more info:  
[blairscattleco.com](http://blairscattleco.com) | [blairs4juniors.com](http://blairs4juniors.com)



# SHOWING my heifer investing in my *Dreams*



We are very proud of all the outstanding young people who are taking steps towards their future!



RED BLAIRS MARTA 27Y



## RED BLAIRS MARTA 27Y

Tattoo: BBC 27Y Registration #1637434 BD: March 09, 2011

**SIRE:** RED FINE LINE MULBERRY 26P OSF AMF MAF  
RED BLAIR'S DAYTONA 116U  
RED JCC LASS 41N

**DAM:** RED LCC MAJOR LEAGUE A502M OSF MAF  
RED STEWART MARTA 803U  
RED EAGLE ACRES LACE 492C

RED COMPASS MULBERRY 449M  
RED DUS FAYETTE 8G  
RED TER-RON MAMBO 28K  
RED JCC LASS 63K  
RED BFCK CHEROKEE CNYN 4912  
RED KRN REBA'S ROBIN OSF  
RED LEACHMAN MONU 2X OSF  
RED EAGLE ACRES MARTA 26Y

BW: 83 lbs. EPD's BW +1.7 WW +45 YW +79 Milk +15

Marta 27Y is a show heifer candidate that everyone will have marked. She has the power of Daytona with the predictability of her Major League dam. A half sister sold in our Class of '10 online sale to Ben Lodoen in North Dakota. Ask Ben what he thinks about the Marta females and I bet a smile will come to his face.



Maternal sister to Red Blairs Marta 27Y



RED BLAIR'S DAYTONA 116U



RED JCC ROXIE 20S



RED BLAIRS ROXIE 229Y



## RED BLAIRS ROXIE 229Y

Tattoo: BBC 229Y Registration #1637420 BD: February 15, 2011

**SIRE:** RED FINE LINE MULBERRY 26P OSF AMF MAF  
RED BLAIR'S DAYTONA 116U  
RED JCC LASS 41N

**DAM:** RED TER-RON MAMBO 28K  
RED JCC ROXIE 20S  
RED JCC ROXIE 73M

RED COMPASS MULBERRY 449M  
RED DUS FAYETTE 8G  
RED TER-RON MAMBO 28K  
RED JCC LASS 63K  
RED YY RED KNIGHT 640F OSF  
RED ALDER ABG STAR DUST 8G  
RED SSS BOMBER 907G  
RED JCC ROXIE 5H

BW: 84 lbs. EPD's BW +2.1 WW +40 YW +79 Milk +9

This is a show heifer with a powerful proven dam. Roxie 20S has had a very successful show career as a bred heifer and a two year old. Roxie 229Y is double bred Mambo and double bred Bomber with a shot of Mulberry. Daytona has done a fantastic job and is a great example of what the future holds for Daytona offspring in the Angus breed. She is long spined, long fronted and has tons of natural muscle. She is as gentle as they come and will be an excellent junior show heifer.







## RED BLAIRS LASS 231Y

Tattoo: BBC 231Y Registration #1637425 BD: February 21, 2011

**SIRE:** RED TER-RON FULLY LOADED 540R  
RED TER-RON RELOAD 703T  
RED TER-RON SAMARIA 103N

**DAM:** RED FINE LINE MULBERRY 26P OSF AMF MAF  
RED HLR LASS 1T  
RED JCC LASS 41N

RED HEARTLAND KNIGHT CHARM 11L  
RED TER-RON GOLDIE 240L  
RED BRYLOR SENSATION 6L  
RED NDCC FARGO SAMARIA 103L  
RED COMPASS MULBERRY 449M  
RED DUS FAYETTE 8G  
RED TER-RON MAMBO 28K  
RED JCC LASS 63K

BW: 96 lbs. EPD's BW +5.0 WW +38 YW +71 Milk +11



RED BLAIRS LASS 231Y

Whenever you see a Lass female you need to perk up. This one is very special as she is off the \$21,000 half interest Lass 1T that we sold in Red Roundup to SooLine Cattle Co. Reload x Lass 1T is a cool pedigree and this heifer has loads of show potential. Think long and hard about this heifer as she may need to be in the Denver show string.



RED TER-RON RELOAD 703T



RED HLR LASS 1T



RED HLR LASS 1T



## BLAIRS MCHENERY BARBRA 306Y

Tattoo: BBC 306Y Registration #1637419 BD: February 14, 2011

**SIRE:** SANDY BAR GRASSLANDS 94T  
SANDY BAR GRASSLANDS 189W  
SANDY BAR LINDA 38T

**DAM:** HF CONTROLLER 35L  
LLB MCHENRY BARBARA 312P  
LLB BARBARA MCHENRY 406H

WILBAR ADVANTAGE 202R  
SANDY BAR JEMINA 22N  
SPRUCE VIEW GENERAL 67R  
SANDY BAR LINDA 1P  
HF MOST WANTED 46H  
HF LUCY 84J  
LLB O'RILEY 120F  
LLB BARBARA MCHENRY 4U

BW: 87 lbs. EPD's BW +3.5 WW +38 YW +70 Milk +17



BLAIRS MCHENERY BARBRA 306Y

Barbra 306Y is the kind that has cow power written all over her. She is deep sided, deep flanked and has that power front end that tells you she will raise herd bulls. Take a serious look.



MSG BLACKBERRY 1036X



## MSG BLACKBERRY 1036X

Tattoo: MSG 1036X Registration #Applied BD: March 7, 2010

**SIRE:** S A V NET WORTH 4200 AMF NHF CAF  
JL NET WORTH 07064  
HOWE MS ERICA 57N

**DAM:** TOWN N'COUNTRY TARZAN 5K  
DON WOOD MISS MORRISON 36M  
DON WOOD MISS MORRISON 12K

S A V 8180 TRAVELER 004 AMF NHF CAF  
S A V MAY 2410  
EBON HILL LIBERTY 13'01  
HOWE MS ERICA 36L  
TC STOCKMAN 365  
LENLOOK ETHEL 15C  
MINBURN DANCER 76C  
MISS MORRISON DON WOOD 5'97

BW: 80 lbs. EPD's BW +n/a WW +n/a YW +n/a Milk +n/a TM +n/a

Bred to RC Wiley Post 9304B EXAR April 15th. Exposed to EXAR Raven 8096 May 30th - July 20th.

Being relatively new in the Angus breed, we have been successful in bringing out Angus females that have gained acceptance in the show ring. For our first offering we are consigning that same calibre of females to the Genetics in Motion Sale. 1036X is a powerful, deep ribbed female that is going to turn into a brood cow, just like her dam. She is bred to the RC Wiley Post 9304B EXAR bull that should create an extremely exciting mating. 1036X was Davis' junior project and he would like to continue to show her through the fall at various junior events, at our expense and upon approval from her new owner.

Consigned by Mainstream Genetics.



RC WILEY POST 9304B EXAR



## MSG RITA 1065X

Tattoo: MSG 1065X Registration #Applied BD: March 24, 2010

**SIRE:** S A V NET WORTH 4200 AMF NHF CAF  
S A V WALL STREET 7091 AMF NHF CAF  
CHAMPION HILL GEORGINA 2175

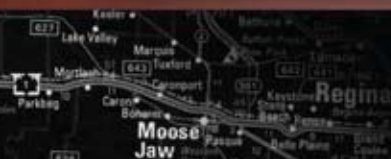
**DAM:** G D A R TRAVELER 044  
LIMESTONE RITA U265  
G A R PRECISION 2089 NHC AMF

S A V 8180 TRAVELER 004 AMF NHF CAF  
S A V MAY 2410  
CHAMPION HILL TECUMSEH  
L L A GEORGINA 419  
D H D TRAVELER 6807 AMF MAF NHF  
G D A R BLACKCAP LADY 840  
G A R PRECISION 1680 AMF NHC  
G A R EXT 704 AMF

BW: 74 lbs. PE EPD's BW +3.9 WW +49 YW +89 Milk +21 TM +46

Bred to RC Wiley Post 9304B EXAR April 25th. Exposed to EXAR Raven 8096 May 30th - July 20th.

1065X is a moderate framed female out of the popular Wall Street bull. Wall Street progeny have excelled in both the show ring and the sale ring, gaining acceptance by both purebred and commercial cattlemen. Not unlike Wall Street, 1065X is a fleshy, deep ribbed heifer that exhibits lots of natural muscle expression. 1065X's dam was purchased from Limestone LLC and was a part of our Agribition show string in 2009. 1065X is bred to RC Wiley Post 9304B EXAR, which was purchased out of Express' spring bull sale and is sure to result in an exciting calf for her new owner. Consigned by Mainstream Genetics.





BLAIRS.AG

25

**BLAIR'S MISS MAY 601X**

Tattoo: BBC 601X Registration #1583270 BD: March 03, 2010

O C C GENESIS 872G  
**SIRE:** DUFF NEW GENERATION 6107  
 O C C DIXIE ERICA 814G

O C C DOCTOR 940D CAF  
 BLACKBIRD OF R R 1204  
 O C C ANCHOR 771A CAF  
 O C C DIXIE ERICA 764C

F A R KRUGERRAND 410H AMF NHF CAF  
**DAM:** MVF MAY 183P  
 CAYMEN MAY 55'00

KRUGERRAND OF DONAMERE 490 AMF NHF  
 F A R ERIANNA 286F  
 CONNEALY DATELINE  
 MVF MAY 80H

BW: 76 lbs. EPD's BW +4.4 WW +44 YW +81 Milk +14 TM +35

Exposed April 25th - May 17th to Red Ringstead Kargo 443W and May 18th - Aug 5th Carruthers Game Day 18X.  
 Observed bred April 26th.

Miss May 601X is a tank of a bred heifer and she comes off the great Duff New Generation 6107 and a power cow from Mountain View Farms. She is a flush mate to 4 bulls that will be offered in our Pursuit of Excellence Bull Sale on April 3rd, 2012. When you see the power of those bulls you will be glad you own this heifer. New Generation had to be put down this spring and we have limited semen. Don't miss this chance to own Miss May 601X.



BLAIR'S MISS MAY 601X

MVF MAY 183P  
Dam of May 601X

BLAIRS.AG

26

**BLAIRS HEROINE 212X**

Tattoo: BBC 212X Registration #1585579 BD: January 20, 2010

S A V FINAL ANSWER 0035 AMF NHF CAF  
**SIRE:** S A V PIONEER 7301 AMF NHF CAF  
 S A V BLACKBIRD 5297

SITZ TRAVELER 8180 AMF NHF CAF  
 S A V EMULOUS 8145 CAF  
 BOYD NEW DAY 8005 AMF NHF CAF  
 S A V BLACKBIRD 1082

S A V NET WORTH 4200 AMF NHF CAF  
**DAM:** MVF HEROINE 163U  
 MVF HEROINE 19P

S A V 8180 TRAVELER 004 AMF NHF CAF  
 S A V MAY 2410  
 NICHOLS EXTRA H6 AMF NHF CAF  
 LENLOOK HEROINE 36M

BW: 82 lbs. EPD's BW +4.0 WW +53 YW +100 Milk +27 TM +54

AI'd to Duff New Generation 6107 April 14th. Exposed April 25th - May 17th to Red Ringstead Kargo 443W and May 18th - Aug 5th Carruthers Game Day 18X.

Here is a female that is crazy good and is going to have that perfect phenotype as a cow and will have an exceptional udder. S A V Pioneer females are becoming very popular already and this heifer will enhance any program in the land. 212X came in dam from Mountain View and the Heroine 163U cow has become a part of a very special group of Mountain view genetics in our herd. Check out the EPD's on this Heroine 212X heifer. Her balance of pedigree and performance makes her a must on your list.



SAV PIONEER 7301



BLAIRS PRIDE 112X



## BLAIRS PRIDE 112X

Tattoo: BBC 112X Registration #1585594 BD: February 21, 2010

### SIRE:

O C C GENESIS 872G  
DUFF NEW GENERATION 6107  
O C C DIXIE ERICA 814G

O C C DOCTOR 940D CAF  
BLACKBIRD OF R R 1204  
O C C ANCHOR 771A CAF  
O C C DIXIE ERICA 764C

### DAM:

ROYAL ALLIANCE DRCC 3025N  
REMINGTON PRIDE 68U  
ROYAL PRIDE DRCC 6013S

SITZ ALLIANCE 6595 AMF NHF  
THOMAS LUCY 0716  
BON VIEW NEW DESIGN 208 AMF NHF CAC  
ROYAL PRIDE DRCC 4045P AMF

BW: 89 lbs. EPD's BW +4.2 WW +42 YW +77 Milk +23 TM +44

*Al'd to Red Towaw Integrity 17M on April 14th. Exposed April 25th - May 17th to Red Ringstead Kargo 443W and May 18th - Aug 5th Carruthers Game Day 18X.*

Pride 112X is a great New Generation off a Remington cow and she will definitely catch your eye on sale day. She has that perfect balance and show ring appeal and you can tell she will be a fantastic cow.



SAV NET WORTH 4200



## CARRUTHERS MAYFLOWER 29X

Tattoo: CNC 29X Registration #1546650 BD: February 15, 2010

### SIRE:

S A V 8180 TRAVELER 004  
S A V NET WORTH 4200 AMF NHF CAF  
S A V MAY 2410

SITZ TRAVELER 8180 AMF NHF CAF  
BOYD FOREVER LADY 8003  
S A F 598 BANDO 5175 AMF CAC  
S A V MAY 6269

### DAM:

SITZ ALLIANCE 6595 AMF NHF  
CARRUTHERS MAYFLOWER 19M  
CARRUTHERS MAYFLOWER 12J

SITZ TRAVELER 8180 AMF NHF CAF  
SITZ BARBARAMERE JET 2698  
R R SCOTCHCAP 9440 AMF NHF  
CARRUTHERS MAYFLOWER 10E

BW: 91 lbs. EPD's BW +5.5 WW +45 YW +86 Milk +31 TM +54

*Exposed April 25th - May 17th to Red Ringstead Kargo 443W and May 18th - Aug 5th Carruthers Game Day 18X.*

Look at the power in this Net Worth heifer. She comes off the powerful Mayflower cow from Neil and Gail Carruthers and has a very cool pedigree with Net Worth, Sitz Alliance and Scotchcap 9440. These Net Worth females make great cows. If you remember the powerful black/red carrier Mulberry heifer we sold in last year's Class of '10 sale to Wildcat Creek you may want this heifer to breed that same way. The Carruthers' cattle are awesome!





# Fit for a Princess



RED BLAIRS PRINCESS 28X



## RED BLAIRS PRINCESS 28X

Tattoo: BBC 28X Registration #1585602 BD: April 27, 2010

### SIRE:

RED SSS STORM 87M  
RED SHODEREE DESTINY 114P  
RED SHODEREE LEADING LADY 96K

### DAM:

RED SOO LINE HAWK 5292  
RED RIVERDALE PRINCESS 120T  
RED RIVERDALE PRINCESS 538N

RED YY STORM 901J  
RED SSS LYDA 381J  
RED SHODEREE LANDMARK 19F  
RED SHODEREE LEADING LADY 80H  
RED GEIS KNIGHT HAWK 14'02  
RED LPC LASSIE'S TOPPER 53H  
RED CRESCENT CREEK H0904 52K  
RED RIVERDALE PRINCESS 44B

BW: 70 lbs. EPD's BW +2.3 WW +42 YW +70 Milk +7 TM +27

Exposed May 18th - Aug 5th Carruthers Game Day 18X.



RED RIVERDALE PRINCESS 120T

Pay attention here. I will go out on a limb to predict that Princess 28X will produce a herdbull in her first try that will be one to remember. She is off the great Red Riverdale Princess 120T that sells Oct 22nd at Red Roundup in Red Deer, Alberta. 28X has great hair, a huge rib and all in a moderate package. She was first in her class at Denver 2011 as a heifer calf and was a favorite of many including Mike Karweik from Walnut Springs.



RED BLAIRS BLOCKANA 32Y



RED JD LANN BLOCKANA 5M  
Grand-dam of Blockana 32Y



RED BLAIRS SOAPY 5Y



SOO 60W  
Maternal brother to Soapy 5Y



## RED BLAIRS BLOCKANA 32Y

Tattoo: BBC 32Y Registration #1637439 BD: March 21, 2011

**SIRE:** RED FINE LINE MULBERRY 26P OSF AMF MAF  
RED BLAIR'S DAYTONA 116U  
RED JCC LASS 41N

RED COMPASS MULBERRY 449M  
RED DUS FAYETTE 8G  
RED TER-RON MAMBO 28K  
RED JCC LASS 63K

**DAM:** RED SOO LINE GLADIATOR 5297  
RED BLAIR'S BLOCKANA 9U  
RED JD LANN BLOCKANA 5M

RED DWAJO GLADIATOR 32L  
RED DKF MISS RAB-STAR 61G  
RED BRYLOR NEW TREND 22D MAF  
RED TOWAW BLOCKANA 40J

BW: 83 lbs. EPD's BW +2.2 WW +39 YW +82 Milk +17

Blockana 32Y has a pedigree and a look to die for. Check out the Daytona, Dwajo Gladiator and New Trend. She has that show ring style and presence that is needed to be a winner. Her grand-dam 5M is a great donor we bought from Geis Angus that we flushed for Columbia and Mexico. Lots of predictability here.



## RED BLAIRS SOAPY 5Y

Tattoo: BBC 5Y Registration #1637406 BD: January 20, 2011

**SIRE:** RED PIE BILLINGS 487 OSF  
RED NBAR HAMLEY S913 OSF  
RED NBAR KELLY 913

RED PERKS ADVANCE 121R OSF  
RED PIE RAMBO'S PRIDE 0289  
RED NBAR DANCE 531  
RED NBAR KELLY 700

**DAM:** RED TER-RON REBEL 102N  
RED SOO LINE SOAPY 5168  
RED SOO LINE EMPRESS 33M

RED LAZY MC DIVIDE 8J  
RED TER-RON MISSMAE 102K  
RED LPC EMPEROR 42H OSF  
RED LPC SOAPY TOPPER 3J

BW: 68 lbs. EPD's BW -4.8 WW +14 YW +41 Milk +14

Soapy 5Y is a unique pedigree. Hamley genetics are not readily available and will definitely be sought after. The Soapy 168R dam was purchased in the SooLine dispersal and was also the dam of SOO 60W that is working at Rocking R Ranch. 5Y has tremendous rib shape and great hair and has that cool Hamley look. She is guaranteed to be a tanky moderate cow. Mark her as special.





## RED BLAIRS PRINCESS 14Y

Tattoo: BBC 14Y Registration #1637418 BD: February 12, 2011

### SIRE:

RED FINE LINE MULBERRY 26P OSF AMF MAF  
RED BLAIR'S DAYTONA 116U  
RED JCC LASS 41N

RED COMPASS MULBERRY 449M  
RED DUS FAYETTE 8G  
RED TER-RON MAMBO 28K  
RED JCC LASS 63K

### DAM:

RED PERKS ADVANCE 121R OSF  
RED T-K PRINCESS 1R  
RED TOWAW PRINCESS 17D

RED RBJR ADVANCE A709 OSF MAF  
RED PERKS MISS RAMBO 8105 OSF  
RED ARSF BOLD EDITION 2A  
RED TOWAW PRINCESS 47Z

BW: 98 lbs. EPD's BW +5.7 WW +49 YW +86 Milk +6

Another great Daytona off a Perks Advance 121R donor cow. If you need powerful, long-spined females with natural shape and muscle then Princess 14Y just found a new home.



RED BLAIRS PRINCESS 14Y



RED T-K PRINCESS 1R  
Dam of Princess 14Y



## RED BLAIRS GOLDIE 11Y

Tattoo: BBC 11Y Registration #?143094 BD: February 4, 2011

### SIRE:

RED FINE LINE MULBERRY 26P OSF MAF  
RED BLAIR'S DAYTONA 116U  
RED JCC LASS 41N

RED COMPASS MULBERRY 449M  
RED DUS FAYETTE 8G  
RED TER-RON MAMBO 28K  
RED JCC LASS 63K

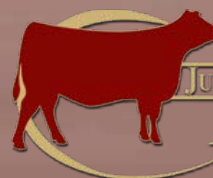
### DAM:

RED LAZY MC DIVIDE 8J  
RED TER-RON GOLDIE 240L  
RED TER-RON GOLDIE 240J

RED LOOSLI DIVIDE 507  
RED BLUE SPRUCE DINA 201Z  
RED SSS BOOM TOWN 260D  
RED TOP GOLDIE 40U

BW: 75 lbs. EPD's BW +2.0 WW +37 YW +65 Milk +7

The possibilities seem endless on this long-spined performance daughter of Daytona and off Fully Loaded's dam. The opportunity to buy a direct daughter off the 240L cow doesn't come along often and when you combine that with the performance of Daytona you have an easy decision.



JUNIOR SCHOLARSHIP PROGRAM  
BLAIRS.AC CATTLE CO.

for more information visit

[www.blairs4juniors.com](http://www.blairs4juniors.com)



BLAIRS DELLA 309Y



DBRL 4336 DELLA 28S  
Dam of Della 309Y



BLAIRS TIBBIE 511Y



MVF TIBBIE 25N  
Dam of Tibbie 511Y



## BLAIRS DELLA 309Y

Tattoo: BBC 309Y Registration #1637421 BD: February 15, 2011

**SIRE:** SANDY BAR ADVANTAGE 43M  
WILBAR ADVANTAGE 202R  
WILBAR KEEPSAKE 929N

TC ADVANTAGE AMF NHF CAF  
SANDY BAR JEMINA 44K  
S A F 598 BANDO 5175 AMF CAC  
WILBAR KEEPSAKE 508L

**DAM:** S A V 004 DENSITY 4336 AMF NHF CAF  
DBRL 4336 DELLA 28S  
CRESCENT CREEK EULA 120L

S A V 8180 TRAVELER 004 AMF NHF CAF  
S A V MAY 7238 CAF  
CRESCENT CREEK CONVERTER 79J  
CRESCENT CREEK EULA 108Z

BW: 83 lbs. EPD's BW +3.4 WW +46 YW +81 Milk +14

Della 309Y is a beautiful Wilbar Advantage daughter off a great S A V Density cow. She is that type that you know will get better every day you own her. The Density dam is a very powerful cow in a moderate package. Come for a visit to see the dam and you will not be disappointed.



## BLAIRS TIBBIE 511Y

Tattoo: BBC 511Y Registration #1637448 BD: April 13, 2011

**SIRE:** V F VENTURE FORWARD AMF NHF CAF  
BxB VENTURE SON 9P  
BxB DATELINE 50M

V D A R TRAVELER 722  
LANDMARK FRED A 911  
VERMILION DATELINE 7078  
MVF EVENING TINGE 70F

**DAM:** BON VIEW NEW DESIGN 878 AMF NHF CAF  
MVF TIBBIE 25N  
BxB FIRST DATE 208L

B/R NEW DESIGN 036 AMF CAF  
BON VIEW GAMMER 85 CAC  
CONNEALY DATELINE  
BxB MISS ROYCE 205J

BW: 75 lbs. EPD's BW +1.0 WW +39 YW +80 Milk +27

Tibbie 511Y is an April heifer with unlimited potential. She is off our favorite cow from the Mountain View dispersal and a cow that has a great future at Blairs.Ag Cattle Co. She has already entered into our donor program and is a favorite of all who see her. Tibbie 511Y has loads of power and performance and will come to the top of everyone's replacement and show pen.





## BLAIRS JENNA RAE 304Y

Tattoo: BBC 304Y Registration #1637413 BD: February 07, 2011

**SIRE:** O C C GENESIS 872G  
DUFF NEW GENERATION 6107  
O C C DIXIE ERICA 814G

**DAM:** CARRUTHERS DESIGN 32L  
CARRUTHERS JENNA RAE 38R  
ANCHOR R JENNA RAE 32M

O C C DOCTOR 940D CAF  
BLACKBIRD OF R R 1204  
O C C ANCHOR 771A CAF  
O C C DIXIE ERICA 764C  
B/R NEW DESIGN 036 AMF NHF CAF  
CARRUTHERS LASS 25D  
CARRUTHERS 9440 32K  
ANCHOR R JENNA RAE 3G'97

BW: 100 lbs. EPD's BW +6.0 WW +43 YW +68 Milk +20

Jenna Rae deserves a special home. We purchased 6 top cows from Neil and Gail Carruthers last year and couldn't wait to get them in with New Generation. Jenna Rae 304Y is exactly what we thought she would be and has that combination of cow power and moderate Angus traits.



## BLAIRS LUCY 311Y

Tattoo: BBC 311Y Registration #1637870 BD: February 25, 2011

**SIRE:** SCA IMAGE MAKER 08N  
DBRL IMAGE MAKER 51W  
WILLABAR HEDY 202J

**DAM:** VALLEY BLOSSOM EQUATOR 729M  
DBRL LUCY 15P  
HF LUCY 88L

H A IMAGE MAKER 0419  
SCA BEAUTY 77'00  
PAPA EQUATOR 2928 AMF NHF  
WILLABAR HEDY 59D  
BASIN EQUATOR 276G  
WIWA CREEK TILDA 33 54'90  
WHITESTONE 9FB3 G228  
HF LUCY 32E

BW: 85 lbs. EPD's BW +2.7 WW +35 YW +72 Milk +17

Lucy 311Y is an Image Maker off a power Equator cow we purchased in the Diamond B dispersal. If you need a replacement heifer with more jam, then Lucy fits the bill.



BLAIRS LUCY 311Y



## BLAIRS SUSAN 302Y

Tattoo: BBC 302Y Registration #1637411 BD: February 05, 2011

**SIRE:** O C C GENESIS 872G  
DUFF NEW GENERATION 6107  
O C C DIXIE ERICA 814G

**DAM:** CARRUTHERS 598 29L  
CARRUTHERS SUSAN 53S  
CARRUTHERS SUSAN 17P

O C C DOCTOR 940D CAF  
BLACKBIRD OF R R 1204  
O C C ANCHOR 771A CAF  
O C C DIXIE ERICA 764C  
BON VIEW BANDO 598 AMF CAC  
TAF ATLANTA 11D  
LUKENS 9440 SCOTCH CAP L463  
CARRUTHERS SUSAN 27M

BW: 79 lbs. EPD's BW +0.3 WW +36 YW +69 Milk +18

Susan 302Y is another rare opportunity to own Duff New Generation genetics off a great Carruthers cow. Anytime you find Scotchcap 9440 and O C C genetics in a pedigree you will want to make some marks in your catalogue. The New Generation females will be the kind that will make powerful but moderate cows.



RED BLAIRS MEG 17Y



## RED BLAIRS MEG 17Y

Tattoo: BBC 17Y Registration #1639450 BD: February 19, 2011

**SIRE:** RED TER-RON RELOAD 703T  
RED WILBAR LATITUDE 235W  
RED WILBAR LANA 346N

**DAM:** RED CORNER CREEK CASH 2R MAF OSF  
RED BLAIR'S MEG 405W  
RED BAR-E-L MEG 115M

RED TER-RON FULLY LOADED 540R  
RED TER-RON SAMARIA 103N  
RED SIX MILE KNOCKOUT 459K  
RED HEAD LANA 15K

RED PIE ATLANTIC 2204 OSF MAF  
RED NORTHLINE PRINCESS 59L  
RED LAZY MC DIVIDE 8J  
RED BAR-E-L MEG 035G

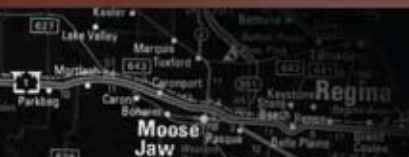
BW: 85 lbs. EPD's BW +3.6 WW +30 YW +49 Milk +14

Meg 17Y is another great Latitude off Cash and a top cow from Dave and Lynne Longshore's. She is soft made with great hair and has that front end that looks like she will make a great cow. Latitude had to be put down so this is the only calf crop there will ever be so take this chance to own these rare genetics.

*Thanks for stopping by...*



**2011 CRAPS Summer Tour at Blairs.Ag Cattle Co.**







## RED BLAIRS RUBA 28Y

Tattoo: BBC 28Y Registration #1639450 BD: March 9, 2011

**SIRE:** RED TER-RON RELOAD 703T  
 RED WILBAR LATITUDE 235W  
 RED WILBAR LANA 346N

**DAM:** RED SSS RIVER BARON 602T  
 RED BLAIR'S RUBA 26W  
 RED BRYLOR G K RUBA 7T

RED TER-RON FULLY LOADED 540R  
 RED TER-RON SAMARIA 103N  
 RED SIX MILE KNOCKOUT 459K  
 RED HEAD LANA 15K  
 RED RIVERDALE BARON 117R  
 RED SSS COLA 152R  
 RED FINE LINE MULBERRY 26P OSF AMF MAF  
 RED HOWE MS. RUBA DDH 7H

BW: 67 lbs. EPD's BW -1.7 WW +16 YW +41 Milk +15



RED BLAIRS RUBA 28Y

Latitude is a Reload son we bought from Wilbar that flat out worked. We have a great set of Latitude heifers. Ruba 28Y had lots of friends at the CRAPS tour this July and will make a great show heifer and then be a great addition to the herdbull factory. She is cherry red, soft made and adorable.



## RED BLAIRS LULU 3Y

Tattoo: BBC 3Y Registration #1637402 BD: January 13, 2011

**SIRE:** RED LMB GOLDEN BOY 719 OSF  
 RED BHR GOLDEN BOY 453B OSF MAF  
 RED MISS BHR LOGAN 017

**DAM:** RED SLC STORM 225P  
 RED PV LULU 402S  
 RED CRIPPS LULU 430P

LMB GOLDEN BOY 5146  
 ST SARA ROSE 468  
 RED BHR LOGAN 734B OSF  
 RED MISS BHR DOLLAR 895  
 RED YY STORM 901J  
 RED SLC PRALEE 188G  
 RED BJD KERMIT 95K  
 RED WBR MISS STORM ALONG 102E

BW: 89 lbs. EPD's BW +2.4 WW +39 YW +72 Milk +14



RED PV LULU 402S

Lulu 3Y was the in dam purchase of the Lulu 402S cow from the Pura Vida dispersal. Her dam sells as Lot #6. I absolutely love the Lulu 402S cow.



## RED BLAIRS ELORA 40X

Tattoo: BBC 40X Registration #1596150 BD: May 02, 2010

**SIRE:** RED NORTHLINE ATLANTIC CITY  
RED WHEEL SIN CITY 43T  
RED WHEEL PRIDE 16M

**DAM:** RED JCC FREEDOM 82L  
RED JCC ELORA 71P  
RED CUTARM ELORA 824Z

RED PIE ATLANTIC 2204 OSF MAF  
RED NORTHLINE QUEEN 240H  
RED CON AIR 55G  
RED PTTV PRIDE 3'97 OSF  
RED SSS BOMBER 907G  
RED JCC YONSOTTU 38F  
RED BULL POWER SS  
RED CUTARM FLORA 408R

BW: 83 lbs. EPD's BW +1.0 WW +34 YW +64 Milk +15 TM +33

Exposed May 18th - Aug 5th to Carruthers Game Day 18X.



RED BLAIRS ELORA 40X

A cherry red bred heifer off of our Sin City herdsire from Wheeler's. Elora 40X comes from a proven cow that also sells as Miss 2004. A great chance to buy that mother/daughter combination that will enhance your program and add that consistency that we all strive for.



## RED BLAIRS LASIE 76X

Tattoo: BBC 76X Registration #1590029 BD: May 21, 2010

**SIRE:** RED RINGSTEAD KARGO 107M  
RED RINGSTEAD KARGO 215U  
RED RINGSTEAD MS EQUAL 589P

**DAM:** RED GEIS RAMBLER 243'04  
RED RIVERDALE LASIE 175U  
RED RIVERDALE LASIE 148R

RED COMPASS KARGO 83K  
RED GET-A-LONG MRS. YOUNG 095  
RED SSS YUKON 440K  
RED SSS MISS EQUAL 495G  
RED ROD RAM 426M  
RED CUMNOCK DUCHESS 843M  
RED SOO LINE HERCULES 12M  
RED RIVERDALE LASIE 363L

BW: 73 lbs. EPD's BW 1.7 WW +32 YW +59 Milk +15 TM +31

Exposed May 18th - Aug 5th to Carruthers Game Day 18X.



RED BLAIRS LASIE 76X

Here is a May heifer that has extreme femininity and style and has been to the big show. Lasie 76X was a part of our Denver show team and placed 2nd in class. She is off the Red Ringstead Kargo bull that also sired our Foxy 63X that was the hit of both Denver and Fort Worth last year and then sold for \$11,500 to Wildcat Creek in Kansas. The dam of Lasie 76X came out of the Riverdale dispersal. We continue to be impressed with the Riverdale program.







RED BAF RED SQUALL 997



## RED BAF RED SQUALL 997

Tattoo: IMP 997X Registration #1637868 BD: January 18, 2010 MAF

**SIRE:** RED BRYLOR SDL PASQUALE 213P  
RED BRYLOR SDL SQUALL 230S OSF MAC  
RED CYT FANNY 15P MAC

**DAM:** RED PERKS ADVANCE 121R OSF  
RED PIE EXPO LASS 6058 OSF  
RED PIE BO'S EXPO 0109

RED VGW RAMBLER 1000 OSF  
RED XXX LAKME 70M  
RED BRYLOR STALLION 46M  
RED PRIME TIME'S FANNY 5'00  
RED RBJR ADVANCE A709 OSF MAF  
RED PERKS MISS RAMBO 8105 OSF  
RED TKP BODACIOUS 693 OSF  
RED PIE EXPO 397

EPD's BW -0.7 WW +34 YW +65 Milk +5 TM +23

*Al'd to N Bar Hamley S193 on April 14th. Exposed April 25th - May 17th to Red Ringstead Kargo 443W and May 18th - Aug 5th to Carruthers Game Day 18X.*

Perfect Angus cow is what you will think of when you see 997X. She is soft and sweet made.



RED SOO LINE BIRDIE 0053



## RED SOO LINE BIRDIE 0053

Tattoo: SOO 53X Registration #1590487 BD: January 19, 2010

**SIRE:** RED PIE ATLANTIC 2204 OSF MAF  
RED CORNER CREEK CASH 2R OSF MAF  
RED NORTHLINE PRINCESS 59L

**DAM:** RED FINE LINE REWARD 6R  
RED SOO LINE BIRDIE 7034  
RED LPC BIRDIE JULIA 11H

RED COLE MISTER "E" 9J  
RED PIE BOTEET 899  
RED NORTHLINE KING 305J  
RED KWS ROCKY PRINCESS 59J  
RED FABULOUS FRONT LINE 315N MAF  
RED FINE LINE KARAMA 65L  
RED MESSMER JULIAN 9486  
RED LPC BIRDIE 3Y

BW: 82 lbs. EPD's BW +2.0 WW +42 YW +66 Milk +14 TM +35

*Al'd to N Bar Hamley April 13th. Exposed April 25 - May 17th to Red Ringstead Kargo 443W and May 18th - Aug 5th to Carruthers Game Day 18X.*

Birdie 53X is a cherry red female off the Birdie 34T female that we own together with SooLine Cattle Co. 53X is a big boned soft made female that I think will get a lot of attention on sale day.  
Owned with SooLine Cattle Co.



RED SOO LINE BIRDIE 7034

GENETICS  
IN motion

# Did we save the best for last?



## BLAIRS JESTRESS 328Y

Tattoo: BBC 328Y Registration #1637442 BD: March 27, 2011

**SIRE:** MINBURN YELLOWSTONE 56S  
DURALTA ULTIMATION 137U  
DURALTA 6595 STARLA 26S

**DAM:** DUFF NEW ATTRACTION 6110  
BLACK WHEEL JESTRESS 55W  
BLACK WHEEL JESTRESS 54T

SOO LINE YELLOWSTONE 237P  
MINBURN BLACKBIRD 116N  
SITZ ALLIANCE 6595 AMF NHF  
SCC 410H TIBBIE 52F 26P  
O C C GENESIS 872G  
O C C DIXIE ERICA 814G  
S A V NET WORTH 4200 AMF CAF NHF  
CRESCENT CREEK JESTRESS 128F

BW: 73 lbs. EPD's BW +3.1 WW +42 YW +87 Milk +20

Jestress 328Y comes from a perfectly made Duff New Attraction two year old we bought from Wheeler's. If you want a perfect udder on a perfect sized cow, then the Jestress 55W cow is what you want. The 328Y heifer is a combination of Yellowstone, Sitz Alliance, New Attraction and Net Worth. WOW!!



BLAIRS JESTRESS 328Y



## BRICTON EVERELDA 6271

Tattoo: IMP 6271S Registration #1639479 BD: November 10, 2006

**SIRE:** TWIN VALLEY PRECISION E161 AMF CAF NHC  
BR MIDLAND AMF NHF CAF  
BR ROYAL LASS 7036-19

**DAM:** B/R NEW DESIGN 036 AMF NHF CAF  
BRICTON EVERELDA 4102 AMF  
KAHN EVERELDA ENTENSE M137

G A R PRECISION 1680 NHC AMC  
W C C BLACKCAP C9  
S A F NEUTRON AMF NHF CAF  
S A F ROYAL LASS 7036  
V D A R NEW TREND 315 AMF NHF CAF  
B/R BLACKCAP EMPRESS 76  
ROCKN D AMBUSH 1531 AMF NHF CAF  
SITZ EVERELDA ENTENSE 1137

EPD's BW -0.3 WW +41 YW +74 Milk +11

AI'd to RC Wiley Post 7304B EXAR April 7th.

This is a beautiful made daughter of the great BR Midland who sold for \$202,000. We had added this breeding piece to incorporate the Everelda Entense cow family. 6271 is a very well balanced female with tremendous rib shape and loads of style that will make her a new nice addition to this year's sale offering. Don't overlook this great cow family with loads of power, being bred to RC Wiley Post 7304B EXAR will be an added bonus. **Consigned by Michelson Land & Cattle.**



BRICTON EVERELDA 6271



# Hamley Semen



RED NBAR HAMLEY S913  
SELLING FOURTY STRAWS



## RED NBAR HAMLEY S913

Tattoo: IMP 9135 Registration #1596448 BD: May 4, 2006 OSF

### SIRE:

RED PERKS ADVANCE 121R OSF  
RED PIE BILLINGS 487 OSF  
RED PIE RAMBO'S PRIDE 0289

### DAM:

RED NBAR DANCE 531  
RED NBAR KELLY 913  
RED NBAR KELLY 700

RED RBJR ADVANCE A709 MAF OSF  
RED PERKS MISS RAMBO 8105 OSF  
RED MABES RAMBO TUO  
RED PIE BOTEET LOGAN 739  
RED SUNDANCE  
RED ODP MISS TRYOUT 2333  
RED 3R DREAM ALONG 75D  
RED 3R KELLY'S DREAM 4D

American EPD's BW -1.3 WW +25 YW +46 Milk +12 TM +24

We partnered with SooLine Cattle in 2010 to buy the Canadian semen rights to NBar Hamley after we saw how good the offspring were at Denver. We knew that the Hamley genetics would match well with our powerful Canadian cows and what a great decision that was. After the SooLine dispersal we purchased out their share and are very excited about his future in our program. We have decided to offer limited semen packages at select events and for 2011 we will sell one package in our Genetics in Motion sale and another at Red Roundup. We are selling 40 straws.

**GENETICS** .....  
IN **motion**

# Proudly bringing it all Together!

Crop Nutrition

Crop Protection

Animal Nutrition



Lanigan - 306.365.3150

Nokomis - 306.528.3150

Watrous - 306.946.3150

McLean - 306.699.2822





Professional Agronomy



Seed



Animal Genetics

**GROW**  
community of  
independents



**B Blair's**

Liberty - 306.847.4444

Lipton - 306.332.7805

Strongfield - 306.857.2225

[www.blairs.ag](http://www.blairs.ag)



R  
P  
G  
P  
R  
G

CANADA POSTES  
POST CANADA

Postage paid  
Addressed  
Admail

Port payé  
Médiaposte  
avec adresse

9112241

RETURN POSTAGE GUARANTEED  
PORT DE RETOUR GARANTI

# *Pursuit of* **EXCELLENCE**

**BULL SALE '12**

2 PM • Jackson Cattle Co. Sale Facility • Sedley SK

**APRIL 3 • 2012**

Jackson Cattle Co, Kenbert Acres, Nexera Land & Cattle Co, Michelson Land & Cattle