

BLAIRS.AG CATTLE CO.

# *The Pursuit of Excellence*

2018 BULL SALE



Tuesday, April 3, 2018 1:00 PM Jackson Cattle Co. Sale Facility,  
Sedley, Saskatchewan



---

WELCOME TO THE 2017

# Pursuit of Excellence Sale

---

TUESDAY, APRIL 3, 2018 | 1:00 PM | JACKSON CATTLE CO. SALE FACILITY, SEDLEY, SASKATCHEWAN

---

Every year Agriculture proves to be unique and challenging and 2017 handed us both of those. The beef industry always rises to any and all challenges and this past year it was drought and feed shortages. As you travel the country and talk to cattleman it's amazing the creative feeding strategies that have been employed. I am always learning and I enjoy the conversations about what can be accomplished through creativity and need.

The underlying reality is that creative solutions are possible on a cowherd that is Angus based. The Angus cow is efficient and can do far more with far less in terms of feed quantity and feed quality. When you are selecting bulls for your operation make sure to keep in mind that efficiency needs to rank high on your list.

Your best asset when it comes to sire selection is and will always be your eyes. Size, type and structure will always be witnessed through your eyes. It is equally important to buy from a breeder that has a plan and the commitment to that plan. We would love to talk to you about the reasons we do the things we do in terms of sire selection and how we select females. We are committed to cow families and speed up our genetic progress through the extensive use of both embryo and A.I.

This year we are proud to offer a select group of fall born, extra age bulls that are a result of our partnership with Carlos Ojea from Argentina. We have sought out genetics off the very best cows and sires in Argentina and are excited to see the impact these genetics can make on both the Angus and Simmental breeds in North America. Argentine genetics are moderate in size, efficient in their type and explosive in their bone. Do yourself a favour and come see them in person on sale day.

The sale offering will look like it was put together by the United Nations with genetics from Canada, USA, New Zealand and Argentina and we are very proud of our progress in terms of providing outcross genetics to the industry.

We look forward to visiting with you in the weeks leading up to the sale and please consider joining us on sale day in Sedley.

*Kevin Blair*

Blairs.Ag Cattle Company



---

## FROM THE DESK AT T BAR...

Welcome to Blairs.Ag Cattle Company "Pursuit of Excellence" Annual Spring Bull Sale at Sedley, Saskatchewan. This sale has grown and developed into "the ultimate source for Red and Black superior genetics!"

This growth did not occur by chance, but rather by decades of culling, breeding and selection. Kevin and Darren have established one of Canada's leading agricultural companies. Their dedication to growing a better product has been from the ground up. No one is too big or too small to be ignored... they care about their customers bottom line.

Where can you find a powerful lineup of bulls like these selling on April 3rd? Thick, rugged, athletic two year old bulls, Red and Black, that can cover more cows, more ground, tighten-up your calving cycle and put uniformity into your feeder calves. In addition to strong phenotype, their genetics are unparalleled because of the strength and quality of the large cow herd base and powerful donor females to the dams of many of the bulls selling. Whether you are a purebred breeder or a commercial cowboy, you owe it to yourself to select from this awesome lineup.

Congratulations to all the Blair gang for a great fall show season in Canada and in January south of the border! Stop by any time prior the sale at Jackson's Sale Barn and preview the offering...don't hesitate to give Kevin or their team a call and discuss the bulls best suited for your program.

If we, at T Bar C, may be of any assistance, prior to or sale day, do not hesitate to give myself or any of our professional team a call, as we can help you with your needs.

*Chris Poley*

T Bar C Cattle Co. Ltd.



**Chris Poley**  
306-220-5006



**Shane Michelson**  
403-363-9973



**Ben Wright**  
519-374-3335







# 87

## Black and Red Angus

Two Year Old and Yearling Bulls

WELCOME TO THE BLAIRS.AG 2018

*Pursuit of Excellence*

BULL SALE - APRIL 3, 2018 - 1:00 PM

Jackson Cattle Co. Sale Facility | Sedley, Saskatchewan

### Calving Ease Legend

Calving Ease is often related to birth weight of a bull. This is partly true but there are other factors that influence calving ease. The dam and her management are at least 50% of calving ease. Also, the consistency of the birth weights of the sire and dam should be considered. Nutrition, gestation and environment all influence birth weight. We have rated each bull in the sale based on the information we have.

- Should produce minimal problems when bred to moderate size first calf heifers.
- Recommend for larger frame heifers, second calvers or small framed cows.
- Recommend for mature cows 1400 pounds plus.

### SALE DAY PHONES



SALE BARN  
306.885.4418  
KEVIN BLAIR  
306.365.7922  
BLAKE MACMILLAN  
306.528.7484  
KENT MCCUNE  
817.602.8629  
CHRIS SCHMIDT  
306.946.7948

CHAD HAALAND  
306.544.7770  
CRAIG BLAIR  
306.699.7607  
LEVI JACKSON  
306.537.9251  
CHANCE JACKSON  
306.537.4690

### SALE STAFF

#### AUCTIONEER

Chris Poley 306.220.5006

#### RINGSIDE

Nate Marin 306.869.7130  
Shane Michelson 403.363.9973  
Ben Wright 519.374.3335

#### SALE MANAGEMENT

T Bar C Cattle Co. Ltd  
Box 2330  
Warman, Saskatchewan S0K 4S0  
306.933.4200 Fax: 306.934.0744  
info@tbarc.com www.tbarc.com



#### SALE MARKETING AGENTS

Bohrson Marketing  
Scott Bohrson 403.370.3010  
Geoff Anderson 306.731.7921  
Rob Voice 306.361.6775  
Taylor Richards 306.821.4169  
Matt Criddle 306.539.6934



#### SALE DAY CONSULTANT

Cattle Business Weekly - Tony Heins 701.400.4435  
Rhett Jones 306.629.7878  
Jim (Shiney) Hallberg 306.861.0917

#### SALE DAY LOCATION

##### JACKSON CATTLE CO. SALE FACILITY

Box 159 Sedley, Sask S0G 4K0 Phone: 306.537.9251

From Sedley: Go 4 miles north on 620, then 1/2 mile west and 1/2 mile back north.

#### SIGHT UNSEEN PURCHASE

If you are unable to make the sale, we will help you with your selection and guarantee your satisfaction. Contact any of us or any of our sales staff for more information.

#### SALE DAY VIDEO SALE

We have elected to go with a video display only sale again for 2018 and forgo running big, two year old bulls through the handling system and into the sale ring. We do this primarily for the safety of the bulls to reduce the risk of injury and bruising. As always, the bulls will be displayed and sorted for viewing in pens right outside of the sale center. We feel that with your pre-sale evaluation and the excellent videos broadcast on the screens, that you can make a selection with confidence just as previously.

#### DELIVERY

Bulls will be delivered free of charge anywhere in Saskatchewan, Alberta, British Columbia or Manitoba. Delivery will start the week after the sale. For US customers we will deliver bulls free of charge to central locations in the northern and central USA.

#### FINANCING OPTIONS

Cash or cheque are accepted sale day.

#### ONLINE CATALOG

www.blairscattleco.com

#### ONLINE BIDDING

www.dvauction.com



Register to bid early as bidding approval is required. Contact Sarah Buchanan with DVAuction.com with any questions at 306.681.5340 or email her at sbuchanan@gold-bar.com.

#### HOTEL ACCOMMODATIONS

Sleep Inn Regina East 306.791.1925  
Ask for the Blairs.Ag room rate.

## *The Argentina Story*

Argentina, with 53,565,000 head of cattle, is the world's fifth largest country with cattle population in terms of a long tradition of breeding cattle and a very solid reputation of productivity and top quality. Almost no cow in the nation receives any help during winter – no hay, no silage, they need to survive and carry a pregnancy by themselves. After generations of keeping the efficient ones, Argentina's cattle have become very hardy and adaptable to different environments.

Argentine Angus are very well known around the world as one of the top genetic sources today. We feel very proud to present this international joint program with our friends, Blair's Cattle Co., where we provided embryos out of our top females and the most proven and productive bulls in Argentina.

The first step couldn't be more auspicious. Blair's Surena 402D, sold in the Power & Perfection Sale at Canadian Western Agribition 2017 to Kurt Hamburger in Oklahoma for \$34,000.00, which was the highest selling female of that prestigious event.

It's bull time now! Take this unique opportunity to add to your program – top end, outcross genetics proven by time and with lots of top cows in the background.

*Carlos Ojea*



**Euro** – Argentina's #1 sire today. In his first offspring, he produced the four Palermo Grand Champions in 2017 – Grand Champion Bull, Grand Champion Female, Reserve Champion Bull and Reserve Champion Female. In the same year, he also produced National Grand Champion Female and Reserve National Grand Champion Female heifer calf. He has everything – numbers (EPD's), perfect phenotype, unmatched pedigree backed by an amazing cow family and his first daughters have great udders.

**Credito** – Argentina's top sire to produce females. He delivered great cows with a perfect udder, femininity and style.

**Candelerio** – He produces performance, power and bone.

**0401 Cow** – 2012 Palermo Grand Champion Female. Her mother is the #1 cow in Argentina and was Mother of the Year in 2012. Her sister was #2 Mother of the Year in 2012 and she produced Palermo, the 2017 Grand Champion Female.

**406D's** brother was Lot 1, and high selling bull in our 2017 annual sale.

**72 Cow** – A Credito daughter/Traveler 011/Traveler 6 with lots of maternal cow power.

**108 Cow** – 660D will be a full sibling to DM Romero. High seller in 2017. She is his most consistent producer.





# 1 BLAIR'S **Candelerio** 406D

BBC 406D

17 Nov 2016

Applied For

SIRE	DON JOSE 176 MAXI	O C C HEADLINER 661H
	<b>TRES MARIAS 8155 CANDELERO</b>	TRES MARIAS 6204 HORNERO 5314
DAM	TRES MARIAS 7358 LA ANDRIA	TRES MARIAS 5837 CUMELÉN
	TRES MARIAS 6301 ZORZAL	TRES MARIAS 6226 CALANDRIA
	<b>HYLINE APAMPADO 0401</b>	TRES MARIAS 5887 HORNERO
	APAMPADO 96	TRES MARIAS 4850 WIND EXT
		NICHOLS PERFORMA D162
		BLACK PRINCESS 9446 LASS

CE

•

ACT BW

82 (ET)

ADJ WW

680

- We are extremely excited to lead off our 2018 Pursuit of Excellence sale with Blair's Candelerio t that combines the 2012 Palermo Grand Champion female with the power and performance of Tres Marias 8155 Candelerio.
- Check out the pedigree. The grand dam is the #1 cow in Argentina today and she produced the 2017 Palermo Grand Champion Female.
- For those that have made the trip can Palermo can attest, the quality of cattle are exceptional and many breeders have waited a long time to experience Argentine genetics in North America.
- **Selling 100% possession and 50% semen interest.**



Hyline Apampado 0401  
Dam of Lot 1



She sold in the Agribition Sale to H & H Simmentals in Oklahoma  
Outcross Argentine Genetics





Full Sister to 404D

- Blair's Condor Euro 404D is one to admire for his massive dimension, bone and rib.
- Euro is the #1 sire in Argentina today and his first calf crop resulted in the 2017 Grand & Reserve Grand Bull and the Grand and Reserve Grand Female at Palermo.
- Have a good look at the phenotype and imagine what he can do for the North America beef industry.
- **Selling 100% possession and 50% semen interest.**



Lot 2

## 2 BLAIR'S Condor Euro 404D

BBC 404D

16 Nov 2016

Applied For

SIRE	TRES MARIAS 6301 ZORZAL		
	LA LEGUA LIDER 8174		
DAM	RUBETA 3910 GRINGO		
	ERRE TE 3241 EXCRIBANA BROMISTA		
SIRE	BENJAMIN 1547 ZORZAL LIDER		
	ERRE TE 383 CONDOR EURO		
DAM	ERRE TE 27 GRINGA TOLUCA		
	TRES MARIAS 7811 CATRIEL 6654		
SIRE	SAN IGNACIO 20 GARUFA 8058		
	TRES MARIAS 8058 ADVANCE 5854		
CE		ACT BW	ADJ WW
••		80 (ET)	687

## 3 BLAIR'S Condor Euro 408D

BBC 408D

19 Nov 2016

Applied For

SIRE	TRES MARIAS 6301 ZORZAL		
	LA LEGUA LIDER 8174		
DAM	RUBETA 3910 GRINGO		
	ERRE TE 3241 EXCRIBANA BROMISTA		
SIRE	BENJAMIN 1547 ZORZAL LIDER		
	ERRE TE 383 CONDOR EURO		
DAM	ERRE TE 27 GRINGA TOLUCA		
	S A V 8180 TRAVELER 004		
SIRE	S A V NET WORTH 4200		
	SURANGUS BLACKBIRD 01382		
DAM	LEACHMAN BLACKBIRD 0268		
	S A V MAY 2410		
SIRE	CONNEALY FRONTLINE		
	LEACHMAN BLACKBIRD 1114		
CE		ACT BW	ADJ WW
••		78 (ET)	681

Lots 3 - 5  
Full  
Brothers



Lot 3



#### 4 BLAIR'S Condor Euro 401D

BBC 401D

11 Nov 2016

Applied For

SIRE	BENJAMIN 1547 ZORZAL LIDER <b>ERRE TE 383 CONDOR EURO</b> ERRE TE 27 GRINGA TOLUCA	TRES MARIAS 6301 ZORZAL LA LEGUA LIDER 8174 RUBETA 3910 GRINGO ERRE TE 3241 EXCRIBANA BROMISTA
	S A V NET WORTH 4200 <b>SURANGUS BLACKBIRD 01382</b> LEACHMAN BLACKBIRD 0268	S A V 8180 TRAVELER 004 S A V MAY 2410 CONNEALY FRONTLINE LEACHMAN BLACKBIRD 1114
DAM		
	CE	ACT BW
	• •	72 (ET)
		ADJ WW
		620

#### 5 BLAIR'S Condor Euro 407D

BBC 407D

19 Nov 2016

Applied For

SIRE	BENJAMIN 1547 ZORZAL LIDER <b>ERRE TE 383 CONDOR EURO</b> ERRE TE 27 GRINGA TOLUCA	TRES MARIAS 6301 ZORZAL LA LEGUA LIDER 8174 RUBETA 3910 GRINGO ERRE TE 3241 EXCRIBANA BROMISTA
	S A V NET WORTH 4200 <b>SURANGUS BLACKBIRD 01382</b> LEACHMAN BLACKBIRD 0268	S A V 8180 TRAVELER 004 S A V MAY 2410 CONNEALY FRONTLINE LEACHMAN BLACKBIRD 1114
DAM		
	CE	ACT BW
	• •	80 (ET)
		ADJ WW
		653

- Lots 3, 4 and 5 are full brothers off the #1 sire in Argentina today.
- You will admire the overall dimension and bone in these sons.
- If you want efficient cattle that are looser made and have more overall dimension and chest floor then give these three sons a look.
- **Selling 100% possession and 50% semen interest.**

#### 6 BLAIR'S Condor Euro 668D

BBC 668D

11 Sep 2016

Applied For

SIRE	BENJAMIN 1547 ZORZAL LIDER <b>ERRE TE 383 CONDOR EURO</b> ERRE TE 27 GRINGA TOLUCA	TRES MARIAS 6301 ZORZAL LA LEGUA LIDER 8174 RUBETA 3910 GRINGO ERRE TE 3241 EXCRIBANA BROMISTA
	STRATUM 1333 CREDITO DISCOVERY <b>DON ROMEO CREDITO 72 BLACKBIRD 3274</b> MAULEON BLACKBIRD 3274 D ALF	O C C DISCOVERY 918D BLACK PRINCESS 7480 PULY G D A R TRAVELER 011 MAULEON BLACKBIRD 2366 DON ALFREDO
DAM		
	CE	ACT BW
	• •	62 (ET)
		ADJ WW
		657

- A neat combination of Euro and Credito Discovery that resulted in a 62 pound birth weight.
- A two star calving ease.
- **Selling 100% Possession and 50% semen interest.**



*Condor*

ERRE TE 383 Condor Euro  
Sire to Lots 2 - 6

#### 7 BLAIR'S Discovery 660D

BBC 660D

1 Sep 2016

Applied For

SIRE	O C C DISCOVERY 918D <b>STRATUM 1333 CREDITO DISCOVERY</b> BLACK PRINCESS 7480 PULY	RITO 9FB3 OF 5H11 FULLBACK ERICA LASSIE OF R R 766B S E TURNING POINT BLACK PRINCESS 7212 PULY
	TRES MARIAS 5887 HORNERO <b>DON ROMEO HORNERO 108 MARY ELBOR</b> MAULEON MARY ELBOR 3350 D. ALF	TRES MARIAS 4955 SCARIAS TRES MARIAS 5116 FOUNDER BANDO MAULEON FORTE 3491 D A MAULEON MARY ELBOR 3022 D A
DAM		
	CE	ACT BW
	• • •	62 (ET)
		ADJ WW
		616

- Blair's Discovery 660D is a calving ease sire out of Credito.
- Credito is well known for producing the top females in Argentina in terms of udders and femininity and style.
- Three star calving ease
- **Selling 100% possession and 50% semen interest.**



*Lot 7*





Te Mania Quantum 09 490  
Sire of Lots 8 & 9



Norseman Eula 11'05  
Dam of Lot 8

- 11R was a donor feature in the Genetic Focus 16 Female Sale to Midnight Oil Cattle Co.
- Daughter sold in the Genetic Focus 2017 to Cornel Van Maren in BC.
- Use BBC 353D to add length of spine and consistency.



Lot 8

## 8 BLAIR'S Quantum 353D

BBC 353D

7 Apr 2016

1944492

SIRE	TE MANIA INFINITY 04379	TE MANIA UNLIMITED U3271
	<b>TE MANIA QUANTUM 09 490</b>	TE MANIA 95102
DAM	TE MANIA 03 158	VERMILION DATELINE 7078
		28 94 OF TE MANIA
	MVF VRD DATELINE 42N	VERMILION DATELINE 7078
	<b>NORSEMAN EULA 11'05</b>	MVF FELICIA 47J
	MGA EULA 44L	DDSA STOCKY 77H
		MGA REULA 32J

CE

ACT BW

ADJ WW

•

78 (ET)

783

## 9 BLAIR'S Quantum 558D

BBC 558D

27 Feb 2016

1938344

SIRE	TE MANIA INFINITY 04379	TE MANIA UNLIMITED U3271
	<b>TE MANIA QUANTUM 09 490</b>	TE MANIA 95102
DAM	TE MANIA 03 158	VERMILION DATELINE 7078
		28 94 OF TE MANIA
	BON VIEW NEW DESIGN 878	B/R NEW DESIGN 036
	<b>MVF TIBBIE 25N</b>	BON VIEW GAMMER 85
	BXB FIRST DATE 208L	CONNELLY DATELINE
		BXB MISS ROYCE 205J

CE

ACT BW

ADJ WW

•

104 (ET)

676



MVF Tibbie 25N  
Dam of Lot 9

- Outcross New Zealand Genetics.
- Off the powerful Mountain View Farms Tibbie 25N donor.
- Specifically designed to add efficiency.
- Tibbie 25N offspring have been very popular in herds across Canada.
- Two daughters retained in the herd.
- The influence of the Simmental recipient dam came into play on this guy's BW.
- Expect lots of milk production on this pedigree.
- **Selling 100% possession and 50% semen interest.**



Lot 9





- A perfect combination of proven sire and proven dam.
- Locomotive sons continue prove their popularity year after year.
- Expect soggy made, highly efficient offspring off this mating.
- Sons sold to Reed Andrew and Double B Angus.



## 10 BLAIR'S Locomotive 348D

BBC 348D

6 Apr 2016

1929036

SIRE	SOO LINE MOTIVE 9016	HF KODIAK 5R
	<b>SOO LINE LOCOMOTIVE 1403</b>	TLA BEAUTY 5R
	SHADY BROOK EVERENTENSE 2039	S A V FINAL ANSWER 0035
		SCR EVERELDA ENTENSE 748
DAM	F V NET WORTH 479U	S A V NET WORTH 4200
	<b>OK LADY LASS 62X</b>	F V 011J MISS TRADITION 206L
	OK LADY LASS 21N	S A F 598 BANDO 5175
		OK FORTUNE RANCHERS SUE 4K
	CE	ACT BW
	• •	78
		ADJ WW
		709

## 11 BLAIR'S Locomotive 337D

BBC 337D

3 Apr 2016

1929033

SIRE	SOO LINE MOTIVE 9016	HF KODIAK 5R
	<b>SOO LINE LOCOMOTIVE 1403</b>	TLA BEAUTY 5R
	SHADY BROOK EVERENTENSE 2039	S A V FINAL ANSWER 0035
		SCR EVERELDA ENTENSE 748
DAM	GDAR DUTCH 1508	DUTCH 744 J V
	<b>DWAJO PRIDE 43S</b>	GDAR BLACKCAP LADY 6402
	DWAJO PRIDE 80K	EVERBLACK MASTERPLAN 007
		DWAJO PRIDE 26F
	CE	ACT BW
	•	94
		ADJ WW
		750



Soo Line Locomotive 1403  
Sire of Lots 10 - 15

- A Locomotive son, BBC 302C was a high seller in last year's sale to Gary & Nikko Grosse.
- A powerful pedigree to breed to your cows.







Della 309A



DBRL 4336 Della 28S  
Maternal Grand Dam of Lot 12



*Locomotive*

Soo Line Locomotive 1403  
Sire of Lots 10 - 15

## 12 BLAIR'S *Locomotive* 528D

BBC 528D

15 Feb 2016

1940977

SIRE	SOO LINE MOTIVE 9016	HF KODIAK 5R
	<b>SOO LINE LOCOMOTIVE 1403</b>	TLA BEAUTY 5R
DAM	SHADY BROOK EVERENTENSE 2039	S A V FINAL ANSWER 0035
		SCR EVERELDA ENTENSE 748
	DUFF NEW GENERATION 6107	O C C GENESIS 872G
	<b>BLAIR'S DELLA 525B</b>	O C C DIXIE ERICA 814G
	DBRL 4336 DELLA 28S	S A V 004 DENSITY 4336
		CRESCENT CREEK EULA 120L
	CE	ACT BW
	•	98
		ADJ WW
		712

- A Locomotive that goes back to the Della 28S donor.
- Off a really good first calf heifer with a great udder.



Soo Line Locomotive 1403  
Sire of Lots 10 - 15



*Peak Dot*

Barbara Of Peak Dot 505S  
Dam of Lot 13

## 13 BLAIR'S *Locomotive* 551D

BBC 551D

25 Feb 2016

1938339

SIRE	SOO LINE MOTIVE 9016	HF KODIAK 5R
	<b>SOO LINE LOCOMOTIVE 1403</b>	TLA BEAUTY 5R
DAM	SHADY BROOK EVERENTENSE 2039	S A V FINAL ANSWER 0035
		SCR EVERELDA ENTENSE 748
	S A V 004 PREDOMINANT 4438	S A V 8180 TRAVELER 004
	<b>BARBARA OF PEAK DOT 505S</b>	S A V EMBLYNETTE 1182
	BARBARA OF PEAK DOT 701P	STEVENSON BRUNO 6371
		BARBARA OF PEAK DOT 701L
	CE	ACT BW
	•	96 (ET)
		ADJ WW
		752

- The PDAR 505S donor is a favorite of everyone that tours the cows.
- Put a circle on this bull.



14 BLAIR'S **Locomotive** 368D

BBC 368D

15 Apr 2016

1946844

SIRE	SOO LINE MOTIVE 9016	HF KODIAK 5R
	<b>SOO LINE LOCOMOTIVE 1403</b>	TLA BEAUTY 5R
DAM	SHADY BROOK EVERENTENSE 2039	S A V FINAL ANSWER 0035
		SCR EVERELDA ENTENSE 748
DAM	DUFF NEW GENERATION 6107	O C C GENESIS 872G
	<b>BLAIRS MAYFLOWER 342Z</b>	O C C DIXIE ERICA 814G
DAM	CARRUTHERS MAYFLOWER 43N	VERMILION DATELINE 7078
		CARRUTHERS MAYFLOWER 12J
CE		
• •		
ACT BW		
75		
ADJ WW		
771		

- A pedigree that stems back to the Mayflower 43N donor.
- A 43N son leads off the Bandura Ranch Bull Sale this year.

*New Generation*

Duff New Generation 6107  
Maternal Grand Sire to Lot 12 & 14

15 BLAIR'S **Locomotive** 384D

BBC 384D

25 Apr 2016

Applied For

SIRE	SOO LINE MOTIVE 9016	HF KODIAK 5R
	<b>SOO LINE LOCOMOTIVE 1403</b>	TLA BEAUTY 5R
DAM	SHADY BROOK EVERENTENSE 2039	S A V FINAL ANSWER 0035
		SCR EVERELDA ENTENSE 748
DAM	SITZ UPWARD 307R	CONNEALY ONWARD
	<b>BLAIR'S PRIDE LADY 01Y</b>	SITZ HENRIETTA PRIDE 81M
DAM	MVF PRIDE LADY 71L	GDAR SVF TRAVELER 228D
		SKY WEST PRIDE LADY 45J
CE		
• •		
ACT BW		
84		
ADJ WW		
772		

- ABA 71L grand dam was a highlight purchase from the MVF dispersal.

*Mayflower*

Blairs Mayflower 43N  
Grand Dam of Lot 14

## BLAIRS.AG BLACK ANGUS HERD SIRE LINE UP



DESERT STORM



OSU FINAL EXAM



NAPOLEON





Locomotive



Blair's Locomotive 621B

- A pedigree that includes the 720S from the Limestone dispersal and the popular Locomotive on the dam side.
- These Napoleon's are the first sons to sell in Canada.
- Napoleon is ultra moderate, ease calving and the calves have extreme vigour at calving.



*Napoleon*

Duff Napoleon 232  
Sire of Lots 16 & 17

16

BLAIR'S Napoleon 744D

BBC 744D	16 Feb 2016	1938344
SIRE	DUFF DISTINCTION 9105 DUFF NAPOLEON 232 DUFF EUR 443 MERLE 808	DUFF BASIC INSTINCT 6501 DUFF NL B351 LADY POP 619 DUFF NEW EDITION 6108 DCC NL 652K MERLE 443
DAM	SOO LINE MOTIVE 9016 BLAIR'S BLACKBIRD 613B O C C BLACKBIRD 720S	HF KODIAK 5R TLA BEAUTY 5R O C C JET STREAM 825J O C C BLACKBIRD 803P
CE	ACT BW	ADJ WW
...	72	612

17

BLAIR'S Napoleon 712D

BBC 712D	16 Jan 2016	2016129
SIRE	DUFF DISTINCTION 9105 DUFF NAPOLEON 232 DUFF EUR 443 MERLE 808	DUFF BASIC INSTINCT 6501 DUFF NL B351 LADY POP 619 DUFF NEW EDITION 6108 DCC NL 652K MERLE 443
DAM	SOO LINE MOTIVE 9016 WIWA CREEK ERICA 77'12 WIWA CREEK ERICA 82'10	HF KODIAK 5R TLA BEAUTY 5R WIWA CREEK ESCALADE 815'08 WIWA CREEK ERICA 79'08
CE	ACT BW	ADJ WW
...	86	595

- The Wiwa Creek Erica 277 dam was purchased together with Boss Cattle Co. from Power & Perfection.
- Napoleon offspring have a unique presence about them. We purchased Napoleon because of the feed efficiency built into his pedigree.



*Erica*

Wiwa Creek Erica 77'12  
Dam of Lot 17





## 18 BLAIR'S **Blueprint** 330D

BBC 330D

1 Apr 2016

1929031

SIRE	LT DRIVEN 9087	L T BANDWAGON 3105
	<b>MAR MAC BLUEPRINT 56B</b>	L T ASHLEY 3087
DAM	MAR MAC TIGER LILY 25Y	HF TIGER 5T
		MCRAE'S BRIDGET 33U
	JUSTAMERE 253 BADA BING 406S	EXAR MASTER 253
	<b>JL RUBY 8056</b>	REMITALL KEEPSAKE 143L
	ROYAL RUBY DRCC 2091M	S A F 598 BANDO 5175
		NA MISS 5454 TIME 9155

- Here is the first Mar Mac Blueprint sons to sell. We purchased him for his moderation and rib shape.
- The JLMB 56U cow has been highly productive with many sons and daughters selling to breeders across Canada.
- Owned with Craig & Chara Blair.
- **Selling 100% possession and 50% semen interest.**

CE	ACT BW	ADJ WW
••	87	724

## BLAIRS.AG BLACK ANGUS DONOR FEMALES



BAR-E-L ERICA 74A



S A V MADAME PRIDE 0151



DWS BC FOREVER LADY 986





Blair's Odyssey 411C  
Maternal Sibling to Lot 20



*Lot* 20

## 19 BLAIR'S **Blueprint** 362D

BBC 362D

12 Apr 2016

1944473

SIRE	LT DRIVEN 9087	L T BANDWAGON 3105
	<b>MAR MAC BLUEPRINT 56B</b>	L T ASHLEY 3087
DAM	MAR MAC TIGER LILY 25Y	HF TIGER 5T
		MCRAE'S BRIDGET 33U
	SOO LINE TRADITION 6034	SITZ TRADITION RLS 8702
	<b>EASTONDALE LADY 22'09</b>	H A BELETTA 0219
	TRIPLE L LADY MIDLAND 22P	BR MIDLAND
		SUZIE OF TWO M 6J
	CE	ACT BW
	• •	85
		ADJ WW
		770

- Expect great things from the Blueprint calves.
- A son sold to Lazy T in a previous bull sale.

## 20 BLAIR'S **Blueprint** 377D

BBC 377D

20 Apr 2016

1929061

SIRE	LT DRIVEN 9087	L T BANDWAGON 3105
	<b>MAR MAC BLUEPRINT 56B</b>	L T ASHLEY 3087
DAM	MAR MAC TIGER LILY 25Y	HF TIGER 5T
		MCRAE'S BRIDGET 33U
	WAF ZORZAL 321U	TRES MARIAS 6301 ZORZAL
	<b>REMINGTON PRIDE LADY 173Y</b>	TRES MARIAS 6582 CUMELLEN 5632
	REMINGTON PRIDE LADY 304T	MVF GRID MAKER 12R
		MVF PRIDE LADY 23M
	CE	ACT BW
	• •	89
		ADJ WW
		786

- Outcross pedigree here with LT Driven on the top and the Argentine Zorzal on the bottom.

## BLAIRS.AG BLACK ANGUS DONOR FEMALES



RAB MEGALASS 4955W



COLEMAN DONNA 812



ROSANKY MC INSTINCT 0065





SAV Final Answer 0035  
Sire of Lot 21

- You can't have enough SAV Final Answer in your program. Maybe one of the best Angus sires ever from SAV.
- Calving ease all day long.



*Lot 21*

## 21 BLAIR'S Final Answer 301D

BBC 301D

25 Jan 2016

1953653

SIRE	SITZ TRAVELER 8180	G D A R TRAVELER 71
	<b>SAV FINAL ANSWER 0035</b>	SITZ EVERELDA ENTENSE 1137
DAM	SAV EMULOUS 8145	BON VIEW BANDO 598
		SAV SKY EMULOUS 2124
	JS BOMBER 1Y	HF TIGER 5T
	<b>TRIPLE L SHAKE THAT 20B</b>	JS MANHATTAN GAL 848
	WAT-CHA SHAKE THAT 1S	WOODHILL COMMANDER 143L-132N
		JUSTAMERE 9946 ROSILLA 387N
	CE	ACT BW
	...	68
		ADJ WW
		671

## 22 BLAIR'S Bismarck 718D

BBC 718D

16 Jan 2016

2016430

SIRE	G A R GRID MAKER	G D A R TRAVELER 044
	<b>SAV BISMARCK 5682</b>	G A R PRECISION 2536
DAM	SAV ABIGALE 0451	SCHOENES FIX IT 826
		SAV ABIGALE 6062
	DUFF BASIC INSTINCT 6501	O C C MISSING LINK 830M
	<b>RSKY 6540 MS INSTINCT 0065</b>	O C C DIXIE ERICA 814G
	RSKY 0108 MS MAGICIAN 6540	O C C MAGICIAN 888M
		JAUER ANCHOR 3002 0108
	CE	ACT BW
	...	76 (ET)
		ADJ WW
		507



Blair's Miss Instinct 791C  
Maternal Sibling to Lot 22



Blair's Miss Instinct 762D  
Full Sister to Lot 22



Blair's Charlo 790C  
Maternal Sibling to Lot 22



*Ms Instinct*

RSKY 6540 Ms Instinct 0065  
Dam of Lot 22

- This SAV Bismarck son is off our top Rosanky Ms Instinct 0065 donor. We can't say enough good about this mating.
- A full sibling sold to Brooking Angus in our Genetic Focus '17 Sale for \$16,500.
- Do not miss this guy. His pedigree alone makes the trip worth while.
- Owned with Canadian Donors.







## 23 BLAIR'S **Resource** 722D

BBC 722D

6 Feb 2016

1973721

SIRE	RITO 707 OF IDEAL 3407 7075	R R RITO 707
	<b>S A V RESOURCE 1441</b>	IDEAL 3407 OF 1418 076
	S A V BLACKCAP MAY 4136	S A V 8180 TRAVELER 004
		S A V MAY 2397
DAM	O C C LEGACY 839L	O C C ECHELON 857E
	<b>COLEMAN DIXIE ERICA 1567</b>	O C C DIXIE ERICA 960E
	CRCC DIXIE ERICA 2639	O C C EUREKA 865E
		O C C DIXIE ERICA 929F

CE	ACT BW	ADJ WW
•	90	654

- Here is a very moderate made bull that puts all the pieces together.
- The sire, SAV Resource continues to gain in popularity.
- The dam was our pick from ZWT in Tennessee.



## 24 BLAIR'S **Resource** 714D

BBC 714D

7 Jan 2016

2016429

SIRE	RITO 707 OF IDEAL 3407 7075	R R RITO 707
	<b>S A V RESOURCE 1441</b>	IDEAL 3407 OF 1418 076
	S A V BLACKCAP MAY 4136	S A V 8180 TRAVELER 004
		S A V MAY 2397
DAM	HF KODIAK 5R	SANDY BAR ADVANTAGE 43M
	<b>SOO LINE VALE BAR 2037</b>	WILBAR RUBY 955N
	LIMESTONE VALE BAR W980	B C LOOKOUT 7024
		SHAMROCK VALE BAR EXT 1174

CE	ACT BW	ADJ WW
••	74	548

- A very cool mating of Soo Line Vale Bar 2037 and SAV Resource. I don't know if it's gets any cooler from a pedigree perspective then this bull.



SOO Line Vale Bar 2037  
Dam of Lot 24



## 25 BLAIR'S **Resource** 710D

BBC 710D

14 Jan 2016

1973720

SIRE	RITO 707 OF IDEAL 3407 7075	R R RITO 707
	<b>S A V RESOURCE 1441</b>	IDEAL 3407 OF 1418 076
	S A V BLACKCAP MAY 4136	S A V 8180 TRAVELER 004
		S A V MAY 2397
DAM	HF KODIAK 5R	SANDY BAR ADVANTAGE 43M
	<b>ZWT BLUE RIBBON HEIRESS 1040</b>	WILBAR RUBY 955N
	SHAMROCK VALE BAR EXT 1174	B A R EXT TRAVELER 205
		SHAMROCK VALE TRAV 6807 7060

CE	ACT BW	ADJ WW
••	72	642

- A breeder at this year's SAV sale put it perfectly when he said, "You can't have too much SAV Resource in your herd."
- Kodiak daughters are great milking females and you will want to keep the daughters off this bull.

S A V Resource 1441  
Sire of Lots 23 - 25



**26** BLAIR'S **Final Exam** 525D

BBC 525D

13 Feb 2016

1940976

SIRE	S A V FINAL ANSWER 0035	SITZ TRAVELER 8180
	<b>OSU FINAL EXAM 3139</b>	S A V EMULOUS 8145
	OSU EMPRESS 1105	S A V BRILLIANCE 8077
		OSU EMPRESS 8175
DAM	BNC GAME CHANGER 1Y	VIN-MAR FOCUS IN 8847
	<b>BLAIR'S TIBBIE 511B</b>	NLC FATAL ATTRACTION 1W
	MVF TIBBIE 25N	BON VIEW NEW DESIGN 878
		BXB FIRST DATE 208L

CE	ACT BW	ADJ WW
...	78	784

- OSU Final Exam has done great things for our program. Credit goes to Kent McCune and Blake MacMillan for finding him in the OSU pen in the yards at Denver.
- Expect great udders from this pedigree.
- Moderation is built into this bull.

**27** BLAIR'S **Final Exam** 742D

BBC 742D

16 Feb 2016

1973722

SIRE	S A V FINAL ANSWER 0035	SITZ TRAVELER 8180
	<b>OSU FINAL EXAM 3139</b>	S A V EMULOUS 8145
	OSU EMPRESS 1105	S A V BRILLIANCE 8077
		OSU EMPRESS 8175
DAM	S A V BRILLIANCE 8077	S A V BISMARCK 5682
	<b>GAMBLES LADY 2064</b>	S A V BLACKCAP MAY 5270
	GAMBLES LADY 2112	B C LOOKOUT 7024
		GAMBLES LADY 3016

CE	ACT BW	ADJ WW
...	62	674

- Final Exam calves are born easy and have great vigour.
- SAV Brilliance on both sides of this pedigree and for good reason. We love the Brilliance in a pedigree.

**28** BLAIR'S **Final Exam** 511D

BBC 511D

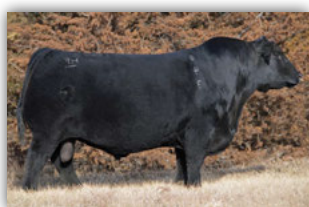
5 Feb 2016

1929373

SIRE	S A V FINAL ANSWER 0035	SITZ TRAVELER 8180
	<b>OSU FINAL EXAM 3139</b>	S A V EMULOUS 8145
	OSU EMPRESS 1105	S A V BRILLIANCE 8077
		OSU EMPRESS 8175
DAM	HF PROWLER 43U	HF KODIAK 5R
	<b>BLAIR'S ATTRACTION 521B</b>	HF ROSEBUD 98P
	NLC FATAL ATTRACTION 1W	DUFF NEW ATTRACTION 6110
		DOUBLE AA BELLA 31'05

CE	ACT BW	ADJ WW
...	71	779

- The dam goes back to our Fatal Attraction donor that we just recently lost.
- Expect calving ease and predictability.

OSU Final Exam 3139  
Sire to Lots 26 - 28HF Prowler 43U  
Maternal Grand Sire to Lot 28NLC Fatal Attraction 1W  
Maternal Grand Dam of Lot 28*Final Exam*  
OSU Final Exam 3139  
Sire to Lots 26 - 28

## 29 BLAIR'S **Final Exam** 599D

BBC 599D

17 Mar 2016

2015698

SIRE	S A V FINAL ANSWER 0035	SITZ TRAVELER 8180
	<b>OSU FINAL EXAM 3139</b>	S A V EMULOUS 8145
DAM	OSU EMPRESS 1105	S A V BRILLIANCE 8077
		OSU EMPRESS 8175
	HF EXCLUSIVE 153X	SOUTHLAND EXCLUSIVE 62U
	<b>BLAIR'S ERICA 528A</b>	WILBAR RUBY 955N
	ERICA OF CHALCO 9W	HF KODIAK 214T
		ERICA OF RANNOCH 10H
	CE	ACT BW
	• •	91
		ADJ WW
		823

- A two star calving ease sire with a stacked pedigree.
- Owned with Shaneri Farms.

## 30 BLAIR'S **Kodiak** 305D

BBC 305D

17 Mar 2016

1938334

SIRE	SANDY BAR ADVANTAGE 43M	TC ADVANTAGE
	<b>HF KODIAK 5R</b>	SANDY BAR JEMINA 44K
DAM	WILBAR RUBY 955N	VERMILION YELLOWSTONE
		WILBAR RUBY 161J
	BON VIEW NEW DESIGN 878	B/R NEW DESIGN 036
	<b>MVF TIBBIE 25N</b>	BON VIEW GAMMER 85
	BXB FIRST DATE 208L	CONNEALY DATELINE
		BXB MISS ROYCE 205J
	CE	ACT BW
	• •	81 (ET)
		ADJ WW
		635

- Kodiak x Tibbie 25N has been a popular mating for us because it just plain works.
- Should be lots of milk and a great udder.

## 31 BLAIR'S **Game Changer** 319D

BBC 319D

27 Mar 2016

1938332

SIRE	VIN-MAR FOCUS IN 8847	MYTTY IN FOCUS
	<b>BNC GAME CHANGER 1Y</b>	BALDRIDGE ERROLINE S216
DAM	NLC FATAL ATTRACTION 1W	DUFF NEW ATTRACTION 6110
		DOUBLE AA BELLA 31'05
	WHITNEY CREEK TRAIN 912	SITZ TRAVELER 043
	<b>TLA DANA 35L</b>	RYGS PAIGES QUEEN 423
	CRESCENT CREEK QUEENMOTHER 62E	RITO 8094 PRAIRIELANE 2060
		TERRLENE DANA 32A
	CE	ACT BW
	• • •	83
		ADJ WW
		682

- A three star calving ease sire of the BNC Game Changer. We used Game Changer to moderate, add hair and rib.

## 32 BLAIR'S **Game Changer** 316D

BBC 316D

26 Mar 2016

1938331

SIRE	VIN-MAR FOCUS IN 8847	MYTTY IN FOCUS
	<b>BNC GAME CHANGER 1Y</b>	BALDRIDGE ERROLINE S216
DAM	NLC FATAL ATTRACTION 1W	DUFF NEW ATTRACTION 6110
		DOUBLE AA BELLA 31'05
	BON VIEW NEW DESIGN 878	B/R NEW DESIGN 036
	<b>MVF TIBBIE 25N</b>	BON VIEW GAMMER 85
	BXB FIRST DATE 208L	CONNEALY DATELINE
		BXB MISS ROYCE 205J
	CE	ACT BW
	• •	85
		ADJ WW
		681

- Fatal Attraction and Tibbie 25N mean you should get calves with extreme rib shape.
- Predictability stacked in this pedigree.



*Lot 31*



*Tibbie*

MVF Tibbie 25N  
Dam of Lot 32



### 33 BLAIR'S **Pokerface** 702D

BBC 702D

11 Jan 2016

2005757

SIRE	SILVEIRAS STYLE 9303	GAMBLES HOT ROD
	<b>GREENE POKERFACE 1304</b>	SILVEIRAS ELBA 2520
DAM	GOHR COVERGIRL 1124	GOHR MAXIMUS 0901
		GOHR COVERGIRL 0972
DAM	B C MATRIX 4132	O C C EMBLAZON 854E
	<b>NORTHERN VIEW BEAUTY 81Y</b>	CAF PURE PRIDE EXT 99
DAM	NORTHERN VIEW BEAUTY 94W	WINDY WILLOWS ALLIANCE 36S
		NORTHERN VIEW BEAUTY 78K
CE		
• • •		
ACT BW		
66		
ADJ WW		
602		

- An outcross bull here off the Greene Pokerface. These genetics are rare in Canada.
- A paternal sister sold to Glen Gabel in the Genetic Focus '17 sale for \$10,000.



Greene Pokerface 1304  
Sire of Lot 33



Blair's Bess 704D  
Paternal Sibling to Lot 33

### 34 BLAIR'S **GQ** 591D

BBC 591D

11 Mar 2016

Applied For

SIRE	SILVEIRAS STYLE 9303	GAMBLES HOT ROD
	<b>SILVEIRAS S SIS GQ 2353</b>	SILVEIRAS ELBA 2520
DAM	K N C CABIN CREEK SANDY 804	B C LOOKOUT 7024
		K N C CABIN CREEK SANDY
DAM	DUFF NEW ATTRACTION 6110	O C C GENESIS 872G
	<b>NLC FATAL ATTRACTION 1W</b>	O C C DIXIE ERICA 814G
DAM	DOUBLE AA BELLA 31'05	DOUBLE AA BLACKMAN 292'01
		DOUBLE AA BELLA 206'02
CE		
•		
ACT BW		
108 (ET)		
ADJ WW		
599		

- The GQ offspring have been popular and for good reason.
- Again, you will notice the Fatal Attraction 1W influence.



*Fatal Attraction*

NLC Fatal Attraction 1W  
Dam of Lot 34





### 35 BLAIR'S **Napoleon** 370D

BBC 370D

17 Apr 2016

1973716

SIRE	DUFF DISTINCTION 9105	DUFF BASIC INSTINCT 6501
	<b>DUFF NAPOLEON 232</b>	DUFF NL B351 LADY POP 619
	DUFF EUR 443 MERLE 808	DUFF NEW EDITION 6108
		DCC NL 652K MERLE 443
DAM	RED BLAIR'S DAYTONA 116U	RED FINE LINE MULBERRY 26P
	<b>BLAIRS ROSEBUD 325Y</b>	RED JCC LASS 41N
	BEVERLY HILLS SOO ROSEBUD 714T	S A V 004 DENSITY 4336
		PRAIRIELANE 9001 ROSEBUD 2011
	CE	ACT BW
	• •	83
		ADJ WW
		653

- I really like the mating here and I love the SAV Density in the pedigree.
- If you want calves with vigour, check out this bull.



Blairs Uptown Girl 105X  
Dam of Lot 36

### 36 BLAIR'S **Legacy** 345D

BBC 345D

6 Apr 2016

1938337

SIRE	RED LAZY MC EYE SPY 64Y	LAZY MC LOOKOUT 37U
	<b>RED WPRA LEGACY A-314</b>	RED LAZY MC GOLD DESIGN 68U
	RED WPRA EVERLEDA ENTENSE 610	RED BFCK CHEROKEE CNYN 4912
		ER EVERELDA ENTENSE P578
DAM	RED FINE LINE MULBERRY 26P	RED COMPASS MULBERRY 449M
	<b>BLAIRS UPTOWN GIRL 105X</b>	RED DUS FAYETTE 8G
	NLC UPTOWN GIRL 19U	SCHURRTOP MC 2500
		DOUBLE AA BELLA 31'05
	CE	ACT BW
	• •	94 (ET)
		ADJ WW
		659

- The Uptown Girl 105X was the \$47,000 high seller from the 2016 Genetic Focus sale.



Blairs Attraction 308Y  
Sire of Lot 37 & 38

### 37 BLAIR'S **Attraction** 369D

BBC 369D

16 Apr 2016

1999638

SIRE	NLC COMING ATTRACTION 2W	DUFF NEW ATTRACTION 6110
	<b>BLAIR'S ATTRACTION 308Y</b>	DOUBLE AA BELLA 31'05
	RED BLAIR'S REGAL LADY 89W	RED NBT EMPEROR 318S
		RED MOOSE CREEK REGAL LADY 56J
DAM	RED BRYLOR/WSP KARWEIK 1P	RED NORTHLINE ROB ROY 122K
	<b>RED WSF MS YANKEE 13T 12W</b>	RED DMM MISS ESSENCE 58M
	RED FINE LINE YANKEE 13T	RED FINE LINE MULBERRY 26P
		RED FINE LINE YANKEE 14R
	CE	ACT BW
	• •	78 (ET)
		ADJ WW
		743

- Calving ease with growth in the pedigree.



38 BLAIR'S **Attraction** 390D

BBC 390D 30 Apr 2016 2016428

SIRE	NLC COMING ATTRACTION 2W <b>BLAIR'S ATTRACTION 308Y</b> RED BLAIR'S REGAL LADY 89W	DUFF NEW ATTRACTION 6110 DOUBLE AA BELLA 31'05 RED NBT EMPEROR 318S RED MOOSE CREEK REGAL LADY 56J
	RED BRYLOR/WSP KARWEIK 1P <b>RED WSF MS YANKEE 13T 12W</b> RED FINE LINE YANKEE 13T	RED NORTHLINE ROB ROY 122K RED DMM MISS ESSENCE 58M RED FINE LINE MULBERRY 26P RED FINE LINE YANKEE 14R
DAM		
	CE	ACT BW
	• • •	77 (ET)
		ADJ WW
		766

- A three star calving ease son going back to Duff New Attraction.

39 BLAIR'S **Quantum** 323D

BBC 323D 29 Mar 2016 1939673

SIRE	TE MANIA INFINITY 04379 <b>TE MANIA QUANTUM 09 490</b> TE MANIA 03 158	TE MANIA UNLIMITED U3271 TE MANIA 95102 VERMILION DATELINE 7078 28 94 OF TE MANIA
	RED SOUTHLAND ENERGIZER 100R <b>RED BLAIR'S LARKABA 17T</b> RED BAR-E-L LARKABA 23R	RED NORTHLINE EQUALIZER 189N RED SOUTHLAND HEATHER 131N RED YY RAMBLER 322N RED BAR-E-L LARKABA 72N
DAM		
	CE	ACT BW
	•	95 (ET)
		ADJ WW
		775

- Te Mania Quantum was my pick of all the bulls we saw in New Zealand for length of spine, foot size and efficiency.
- The Larkaba 17T donor was sold to Rust Mountain View Ranch in Genetic Focus 15 for \$31,000.

40 BLAIR'S **Signature** 387D

BBC 387D 28 Apr 2016 1939672

SIRE	RED SIX MILE GRAND SLAM 130Z <b>RED SIX MILE SIGNATURE 295B</b> RED SELMA OF SIX MILE 358X	RED VGW GAME PLAN 816 RED SIX MILE REBECCA 216X RED SIX MILE UNLEASHED 595U RED RSL MISS SELMA 384F
	RED FINE LINE MULBERRY 26P <b>BLAIRS UPTOWN GIRL 105X</b> NLC UPTOWN GIRL 19U	RED COMPASS MULBERRY 449M RED DUS FAYETTE 8G SCHURRTOP MC 2500 DOUBLE AA BELLA 31'05
DAM		
	CE	ACT BW
	•	95 (ET)
		ADJ WW
		755

- Signature has created quite a stir in the Angus breed across North America with semen selling as high as \$850 CAD.
- Couple Signature with the \$47,000 Uptown Girl 105X and you will get long spined performance cattle, that I can promise.

*Uptown Girl*Blairs Uptown Girl 105X  
Dam of Lot 4041 BAR 4A **Rush Lake** 86D

HJA 86D 26 Jan 2016 1953684

SIRE	SOO LINE MOTIVE 9016 <b>WIWA CREEK RUSH LAKE 71'12</b> WIWA CREEK PRIDE 63'10	HF KODIAK 5R TLA BEAUTY 5R WIWA CREEK FULLBACK 19'07 WIWA CREEK PRIDE 94'06
	RED BRYLOR PHOENIX 16K <b>RED BLADES MISS PHOENIX 33N</b> RED U-2 MISS SOAPY 929J	RED BADLANDS BONUS 702 RED LAZY MC DYNAMO LADY 2X RED GEIS PREMIER PLUS 72'96 RED GEIS MISS SOAPY 177'91
DAM		
	CE	ACT BW
	• •	89
		ADJ WW
		571

- Rush Lake sons and daughters have been high sellers and highly sought after genetics around the country.

CAN'T MAKE THE SALE  
*Sight Unseen Program Available*

**Blairs.Ag**  
cattle company

- A big solid chunk of a bull that will be a favorite on sale day.
- Great performance and maternal power, will pack on the pounds for you.
- Sired by the Genex bull, Sitz Logic who has an exceptional strong maternal pedigree.



## 42 CCCJ Lancaster 11D

CCCJ 11D 3 Feb 2016 1902049 ACT BW: 95 AWW: 721

**SIRE**  
SITZ DIMENSION 8607  
**SITZ LOGIC Y46**  
SITZ FOREVER LADY 612T

**DAM**  
SOO LINE MOTIVE 9016  
**CCCJ FAVORITE 1Z**  
MVF FAVORITE 171X

SITZ UPWARD 307R  
SITZ EVERELDA ENTENSE 264  
CONNEALY THUNDER  
SITZ FOREVER LADY 63M

HF KODIAK 5R  
TLA BEAUTY 5R  
S A V PIONEER 7301  
MVF FAVORITE 23S

CE	BW	WW	YW	MILK	TM
•	2.7	58	107	27	56

## 43 MVF Thriller 24D

ABA 24D 11 Feb 2016 1913793 ACT BW: 98 AWW: 738

**SIRE**  
SOUTHLAND TWO FITTY 250T  
**SOUTHLAND THRILLER 83X**  
SOUTHLAND BELLE 89R

**DAM**  
GDAR GAME DAY 449  
**MVF PRIDE DOLLY 86X**  
MVF PRIDE DOLLY 124U

TC FREEDOM 104  
SOUTHLAND LADY 201M  
VAR DATELINE 2674  
GER-RIS BELLE 26J

BOYD NEW DAY 8005  
G D A R MISS WIX 474  
REMITALL SUDAN 542S  
WILBAR PRIDE DOLLY 453S

CE	BW	WW	YW	MILK	TM
•	4.7	50	87	20	45

- A real smooth made bull.
- Dam is moderate framed with an excellent udder.





**44 CCCJ Intern 9D**

CCCJ 9D 1 Feb 2016 1902042 ACT BW: 89 AWW: 720

SIRE	S A V HARVESTOR 0338	S A V HERITAGE 6295				
	S A V INTERNATIONAL 2020	S A V EMBLYNETTE 7749				
	S A V EMBLYNETTE 5483	S A V 8180 TRAVELER 004				
		S A V EMBLYNETTE 7260				
DAM	S A V PIONEER 7301	S A V FINAL ANSWER 0035				
	MVF FAVORITE 171X	S A V BLACKBIRD 5297				
	MVF FAVORITE 23S	MVF NEW FRONTIER 14N				
		CAN AM FAVORITE 12G				
CE		BW	WW	YW	MILK	TM
••		3.2	59	102	25	55

- This bulls dam 171X was one of the first purebred females Chance purchased and is also grandma to CCCJ 11D (Lot 42) and CCCJ 27E (Lot 51).
- Good solid bull.

**45 MAINSTREAM Durango 32D**

MSG 32D 8 Mar 2016 1945073 ACT BW: 83 AWW: 820

SIRE	RC WILEY POST 9304B EXAR	BC 7022 RAVEN 7965				
	<b>MICH AVIATOR 189Y</b>	WK WINNIE 7305				
	JUSTAMERE 1537 KEEPSAKE 938W	EXAR SUDDEN IMPACT 1537				
		REMITALL KEEPSAKE 143L				
DAM	EXAR SPARTAN 6225	EXAR LUTTON 1831				
	<b>EXAR BLACKBIRD 9574</b>	WK WINNIE 7305				
	BLACKBIRD OF RR 6106	EXAR NOMINAL 3550				
		BLACKBIRD OF RR 4221				
CE		BW	WW	YW	MILK	TM
• • •		1.4	57	91	22	51

- MSG Durango 32D is an Aviator son that goes back to EXAR Lutton 1831 on the dams side.
- MSG 32D is a long spined, deep bodied bull that is sound is his movement.
- He will work well on heifers . . . but if you look at his +91 YW EPD, he is also a bull that will add some pounds to your calves.

**46 MAINSTREAM Game On 27D**

MSG 27D 26 Feb 2016 1945071 ACT BW: 82 AWW: 760

SIRE	RC WILEY POST 9304B EXAR	BC 7022 RAVEN 7965					
	<b>MICH AVIATOR 189Y</b>	WK WINNIE 7305					
	JUSTAMERE 1537 KEEPSAKE 938W	EXAR SUDDEN IMPACT 1537					
		REMITALL KEEPSAKE 143L					
DAM	VERMILION DATELINE 7078	CONNEALY DATELINE					
	<b>MUIRHEAD'S MORRISON 46R</b>	VERMILION BLACKBIRD 5044					
	DON WOOD MISS MORRISON 36M	TOWN N'COUNTRY TARZAN 5K					
		DON WOOD MISS MORRISON 12K					
CE			BW	WW	YW	MILK	TM
• • •			1.4	46	74	24	47

- MSG Game On 27D is a bull you can appreciate for his length of spine, depth of rib, and structural correctness.
- He is an Aviator son, which is a bull that has really left a mark on our herd, retaining several daughters with beautiful udder structure and excellent milking ability.
- MSG 27D is a bull that would work well on heifers.

**47 LEVI Simmi Bull 30D**

JCC 30D 16 Feb 2017 Not Registered ACT BW: 98 (ET) Sep 11/16: 830

SIRE	SVF STEEL FORCE S701	CNS DREAM ON L186				
	<b>FBF1 COMBUSTIBLE</b>	SVF SHEZA BEAUTY L901				
	LAZY H BURN BABY BURNR34	WLE BS BENCHMARK				
		TRIPLE C BURN IT UP N34L				
DAM	HARVIE JDF WALLBANGER111X	SHS ENTICER P1B				
	<b>SVS BLK JENNA 18Z</b>	JDF PEPSI 61U				
	SUNNYVALLEY BLK JENNA 88U	RLA REDSTREAM 152S				
		WLB 32H JENNA 360R				
CE		BW	WW	YW	MILK	TM

- Levi purchased a few Simmental embryos and this bull was the result of that venture.
- Nicely made with excellent feet, super disposition.
- Real attractive bull.

CAN'T MAKE THE SALE  
*Bid Online with*

**DVAuction**  
*Broadcasting Real-Time Auctions*





## 48 CCCJ Troubadour 6E

CCCJ 6E 9 Feb 2017 1969941 ACT BW: 97 AWW: 746

SIRE	S A V REGISTRY 2831	RITO 707 OF IDEAL 3407 7075
	<b>S A V SEEDSTOCK 4838</b>	S A V MADAME PRIDE 0075
	S A V BLACKCAP MAY 4136	S A V 8180 TRAVELER 004
DAM	HF KODIAK 5R	SANDY BAR ADVANTAGE 43M
	<b>SOO LINE ROSEBUD 0013</b>	WILBAR RUBY 955N
	SOO LINE ROSEBUD 8210	SOO LINE YELLOWSTONE 6344
		TLA ROSEBUD 4R

CE	BW	WW	YW	MILK	TM
•	3.9	61	103	21	52

- This calf has been admired by all who have seen him, a real solid individual and hard to find fault with.
- Dam, 13X is Chance's best producer, grandma to CCCJ 5E (Lot 50).
- He has two daughters in the herd and we kept her bull calf last year for our own use.
- Combine this with the iconic Blackcap May 4136, who has generated over 8.6 million in progeny sales and you will want to keep every female this bull calf sires.



## 49 CCCJ Eclipse 16E

CCCJ 16E 18 Feb 2017 TW1969949 ACT BW: 82 AWW: 652

SIRE	S A V REGISTRY 2831	RITO 707 OF IDEAL 3407 7075
	<b>S A V SEEDSTOCK 4838</b>	S A V MADAME PRIDE 0075
	S A V BLACKCAP MAY 4136	S A V 8180 TRAVELER 004
DAM	SOO LINE LEGACY 7019	HF KODIAK 5R
	<b>SOO LINE ROSEBUD 2150</b>	GEIS PRIDE 114'99
	SOO LINE ROSEBUD 9312	SOO LINE YELLOWSTONE 6344
		GEIS ROSEBUD 88'04

CE	BW	WW	YW	MILK	TM
• •	2.6	54	94	21	47

- This calf has lots of eye appeal and natural muscling.
- These bulls were raised on grass with their mamas.
- No creep.
- Weaning weights are off a bit this year but considering the conditions we are happy with how everyone faired.



## 50 CCCJ Lotto 21E

CCCJ 21E 25 Feb 2017 1998606 ACT BW: 90 (ET) AWW: 718

SIRE	BARSTOW CASH	SITZ DASH 10277
	<b>BSF HOT LOTTO 1401</b>	BARSTOW QUEEN W16
	BSF PRINCESS EL CAP W2	SILVEIRAS EL CAPITAN 6510
DAM	RR 7407 RAINMAKER 2154	B S F PRINCESS TCF N2
	<b>TLA BEAUTY 6R</b>	A A R RAINMAKER 7407
	TERRLENE BEAUTY 35F	H A CONCEPCIONA 0224
		TERRLENE EXECUTIVE PRIDE 10D
		KBJ BEAUTY 257B

CE	BW	WW	YW	MILK	TM
• •	1.7	60	105	25	54

- A very interesting pedigree here.
- Dam, TLA Beauty 6R, is the #1 incoming earning cow at Brooking Angus and the sire, BSF Hot Lotto is a feature herdsire for Hamilton Farms.
- A real genetic powerhouse here.



**51 CCCJ Falcon 27E**

CCCJ 27E 8 Mar 2017 1969956 ACT BW: 78 AWW: 729

SIRE	RING CREEK BIG PAYOUT 41Z	CONNEALY CONSENSUS 7229
	<b>JCC PREFERRED 34B</b>	LADY OF RING CREEK 10W
DAM	CCCJ ERROLLINE 17Z	S A V BISMARCK 5682
	HF KODIAK 5R	CCCJ ERROLLINE 2W
DAM	<b>CCCJ FAVORITE 25B</b>	SANDY BAR ADVANTAGE 43M
	MVF FAVORITE 171X	WILBAR RUBY 955N
DAM		S A V PIONEER 7301
		MVF FAVORITE 23S

CE	BW	WW	YW	MILK	TM
• • •	0.8	50	90	23	48

- A heifer bull candidate here.
- We had the misfortune of losing the sire 34B, who left us with the most consistent calf crop of any bull we have ever used.

CHECK OUT THE

*Platinum  
Bull  
Warranty*

ON PAGE 39

**52 CCCJ Outlaw 5E**

CCCJ 5E 8 Feb 2017 1969952 ACT BW: 96 AWW: 718

SIRE	S A V HARVESTOR 0338	S A V HERITAGE 6295
	<b>S A V INTERNATIONAL 2020</b>	S A V EMBLYNETTE 7749
DAM	S A V EMBLYNETTE 5483	S A V 8180 TRAVELER 004
		S A V EMBLYNETTE 7260
DAM	S A V BRAND NAME 9115	S A V BISMARCK 5682
	<b>CCCJ ROSEBUD 8A</b>	S A V BLACKCAP MAY 5530
DAM	SOO LINE ROSEBUD 0013	HF KODIAK 5R
		SOO LINE ROSEBUD 8210

CE	BW	WW	YW	MILK	TM
•	6.0	64	110	20	52

- A real stout calf sired by the \$400,000 SAV International.
- Chance has used International in his AI program for several years and he is a no miss sire.
- Producing bulls with soundness and lots of muscle expression and broody females with excellent udders.

*Lot 52***53 CCCJ Intel 8E**

CCCJ 8E 11 Feb 2017 1969943 ACT BW: 95 AWW: 734

SIRE	S A V HARVESTOR 0338	S A V HERITAGE 6295
	<b>S A V INTERNATIONAL 2020</b>	S A V EMBLYNETTE 7749
DAM	S A V EMBLYNETTE 5483	S A V 8180 TRAVELER 004
		S A V EMBLYNETTE 7260
DAM	MVF NET WORTH 183U	S A V NET WORTH 4200
	<b>MVF TIBBIE 138X</b>	MVF TIBBIE 152N
DAM	MVF TIBBIE 173T	MVF VRD DATELINE 13M
		MVF TIBBIE 51H

CE	BW	WW	YW	MILK	TM
•	6.2	60	100	18	48

- Another very good International son.
- Dam 138X is a beautiful female with an excellent udder.
- Will add pounds to your bottom line.

*Lot 53*



Lot 54

54 RED BLAIR'S **Kargo** 562D

BBC 562D                      28 Feb 2016                      1946719

SIRE	RED RINGSTEAD KARGO 107M	RED COMPASS KARGO 83K
	<b>RED RINGSTEAD KARGO 215U</b>	RED GET-A-LONG MRS. YOUNG 095
	RED RINGSTEAD MS EQUAL 589P	RED SSS YUKON 440K
DAM		RED SSS MISS EQUAL 495G
	RED BRYLOR SDL RICHTER 212R	RED BRYLOR SDL STALLION 150N
	<b>RED BRYLOR PRISCILLA 67W</b>	RED XXX LAKME 70M
	RED BRYLOR PRISCILLA 304S	RED BRYLOR NEW TREND 22D
		RED WIL-SEL PRISCILLA R. 21K

CE	ACT BW	ADJ WW
•	95 (ET)	722

*Lots 54 -57*  
*Full Siblings*

The Priscilla 67W dam is owned with Canadian Donors and is well known for her daughter, Red Blair's Priscilla 44Z that we sold to Double B Angus, that Baxter showed so successfully. The 44Z female is perfectly constructed with bone, hair, udder, rib, disposition and color. Most people know who Priscilla is but not everyone knows she is a Red Ringstead Kargo 215U daughter. The mating of Kargo x Priscilla 67W is one of those matings that clicks every time you replicate it. The next four sons are all full siblings to the great Priscilla 44Z donor and we expect great things from these bulls for the new owners. 67W is a powerful dam with rib and dimension and Kargo adds maternal qualities in an easy calving, dark red package. Kargo is known for raising some of the widest based females in the country. **Selling 100% possession and 50% semen interest.**



Red Ringstead Kargo 215U  
Sire of Lots 54 - 57



Priscilla 44Z  
Full Sibling to Lots 54 - 57



55 RED BLAIR'S **Kargo** 554D

BBC 554D

27 Feb 2016

1929515

SIRE

RED RINGSTEAD KARGO 107M  
**RED RINGSTEAD KARGO 215U**  
 RED RINGSTEAD MS EQUAL 589P

RED COMPASS KARGO 83K  
 RED GET-A-LONG MRS. YOUNG 095  
 RED SSS YUKON 440K  
 RED SSS MISS EQUAL 495G

DAM

RED BRYLOR SDL RICHTER 212R  
**RED BRYLOR PRISCILLA 67W**  
 RED BRYLOR PRISCILLA 304S

RED BRYLOR SDL STALLION 150N  
 RED XXX LAKME 70M  
 RED BRYLOR NEW TREND 22D  
 RED WIL-SEL PRISCILLA R. 21K

CE

ACT BW

ADJ WW

•

88 (ET)

711



Priscilla 44Z  
 Full Sibling to Lots 54 - 57



Lot 55

56 RED BLAIR'S **Kargo** 557D

BBC 557D

1 Mar 2016

1953652

SIRE

RED RINGSTEAD KARGO 107M  
**RED RINGSTEAD KARGO 215U**  
 RED RINGSTEAD MS EQUAL 589P

RED COMPASS KARGO 83K  
 RED GET-A-LONG MRS. YOUNG 095  
 RED SSS YUKON 440K  
 RED SSS MISS EQUAL 495G

DAM

RED BRYLOR SDL RICHTER 212R  
**RED BRYLOR PRISCILLA 67W**  
 RED BRYLOR PRISCILLA 304S

RED BRYLOR SDL STALLION 150N  
 RED XXX LAKME 70M  
 RED BRYLOR NEW TREND 22D  
 RED WIL-SEL PRISCILLA R. 21K

CE

ACT BW

ADJ WW

•

90 (ET)

701



Lot 56

57 RED BLAIR'S **Kargo** 569D

BBC 569D

2 Mar 2016

1946720

SIRE

RED RINGSTEAD KARGO 107M  
**RED RINGSTEAD KARGO 215U**  
 RED RINGSTEAD MS EQUAL 589P

RED COMPASS KARGO 83K  
 RED GET-A-LONG MRS. YOUNG 095  
 RED SSS YUKON 440K  
 RED SSS MISS EQUAL 495G

DAM

RED BRYLOR SDL RICHTER 212R  
**RED BRYLOR PRISCILLA 67W**  
 RED BRYLOR PRISCILLA 304S

RED BRYLOR SDL STALLION 150N  
 RED XXX LAKME 70M  
 RED BRYLOR NEW TREND 22D  
 RED WIL-SEL PRISCILLA R. 21K

CE

ACT BW

ADJ WW

•

95 (ET)

681



Priscilla

Red Brylor Priscilla 67W  
 Dam of Lots 54 - 57





Lot 58

## 58 RED BLAIR'S *Signature* 582D

BBC 582D

8 Mar 2016

Applied For

SIRE	RED SIX MILE GRAND SLAM 130Z	RED VGW GAME PLAN 816
	<b>RED SIX MILE SIGNATURE 295B</b>	RED SIX MILE REBECCA 216X
DAM	RED SELMA OF SIX MILE 358X	RED SIX MILE UNLEASHED 595U
	RED RINGSTEAD KARGO 215U	RED RSL MISS SELMA 384F
	<b>RED BLAIRS LASIE 76X</b>	RED RINGSTEAD KARGO 107M
	RED RIVERDALE LASIE 175U	RED RINGSTEAD MS EQUAL 589P
		RED GEIS RAMBLER 243'04
		RED RIVERDALE LASIE 148R
	CE	ACT BW
	• •	90 (ET)
		ADJ WW
		615



Lot 59

## 59 RED BLAIR'S *Kargo* 596D

BBC 596D

15 Mar 2016

1946722

SIRE	RED RINGSTEAD KARGO 107M	RED COMPASS KARGO 83K
	<b>RED RINGSTEAD KARGO 215U</b>	RED GET-A-LONG MRS. YOUNG 095
DAM	RED RINGSTEAD MS EQUAL 589P	RED SSS YUKON 440K
	RED BRYLOR/WSP KARWEIK 1P	RED SSS MISS EQUAL 495G
	<b>RED WSF MS YANKEE 13T 12W</b>	RED NORTHLINE ROB ROY 122K
	RED FINE LINE YANKEE 13T	RED DMM MISS ESSENCE 58M
		RED FINE LINE MULBERRY 26P
		RED FINE LINE YANKEE 14R
	CE	ACT BW
	• •	98 (ET)
		ADJ WW
		757

We could write a book about the influence that Yankee 12W has had in our program. She has done it all and it was with some reservation we sold her in January 2018 at the Denver National Stock Show. It seemed fitting that a donor of her stature should sell at the most prestigious show in the world. When it was all said and done she sold in the Western Heritage sale to Rust Mountain View Ranch for \$76,000 USD. We are excited to see what her future holds at Rust's in North Dakota. We have sold many sons through this sale and others to purebred breeders and commercial breeders alike. The most famous son would be Red Blair's Bingo 581B that sold to Duff Cattle Co. for \$55,000 but other sons were sold to Moose Creek/Lazy T, Shantz Farms, River Rock Angus, Don Neil, George Tripps, Southview Ranch, Tica Holdings, Jake McNichol, Cargo Stock Fms, Lazy T Ranch, Breault Ranching, Maple Oaks/Cutting Edge just to name a few. The BBC 582D and BBC 596D sons selling are full siblings to the \$55,000 Red Blair's Bingo 581B and the \$46,000 Red Blair's Kongo 581D.



Red Blair's Lasie 76X  
Dam of Lot 58



Kongo 581D  
Full Sibling to Lot 59



RED WSF Ms Yankee 13T 12W  
Dam to Lot 59



Red Blair's Notorious 62B  
Full Sibling to Lot 59



Bingo 581B  
Full Sibling to Lot 59





*Lot* 60

## 60 RED BLAIR'S **Bingo** 556D

BBC 556D

27 Feb 2016

1935736

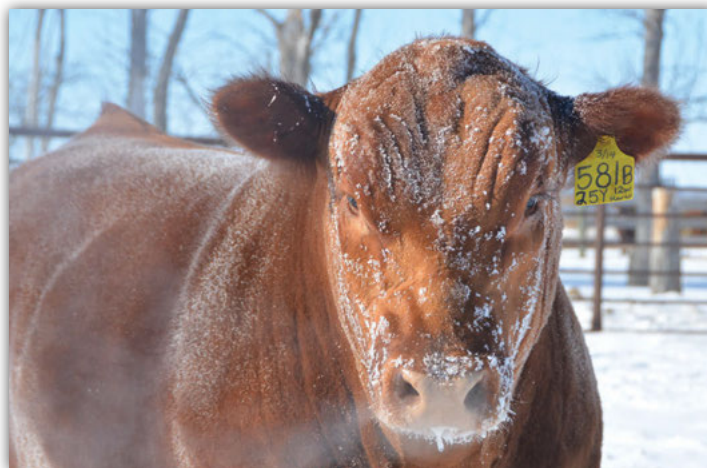
SIRE	RED RINGSTEAD KARGO 215U	RED RINGSTEAD KARGO 107M
	<b>RED BLAIR'S BINGO 581B</b>	RED RINGSTEAD MS EQUAL 589P
	RED WSF MS YANKEE 13T 12W	RED BRYLOR/WSP KARWEIK 1P
DAM		RED FINE LINE YANKEE 13T
	RED WHEEL ALLIANCE 22U	RED NORTHLINE ATLANTIC CITY
	<b>RED BLAIR'S DYNAMINT 46B</b>	RED WHEEL AUBURN 2K
	RED RIVERDALE DYNAMINT 340L	RED SSS BOMBER 789G
		RED RIVERDALE DYNAMINT 113G

- The first Red Blair's Bingo 581B son to sell in Canada.
- Stems from the Dynamint 340L donor we bought from the Riverdale dispersal.
- **Selling 100% possession and 50% semen interest.**

CE	ACT BW	ADJ WW
•	84	722



Red Blair's Monique 572D  
Bingo Daughter



Red Blair's Bingo 581B  
Sire of Lots 60 & 61







## 61 RED BLAIR'S **Bingo** 561D

BBC 561D 27 Feb 2016 1929522

SIRE	RED RINGSTEAD KARGO 215U	RED RINGSTEAD KARGO 107M
	<b>RED BLAIR'S BINGO 581B</b>	RED RINGSTEAD MS EQUAL 589P
DAM	RED WSF MS YANKEE 13T 12W	RED BRYLOR/WSP KARWEIK 1P
		RED FINE LINE YANKEE 13T
DAM	RED CORNER CREEK CASH 2R	RED PIE ATLANTIC 2204
	<b>RED KENRAY LAKOTO 30A</b>	RED NORTHLINE PRINCESS 59L
DAM	RED AQUA HOLLOW LA SENZA 9R	RED STEWART SENSATION 9L
		RED CUMNOCK LAKOTA 41G
CE	ACT BW	ADJ WW
...	77	688

- A Bingo off a hard working Kenray Ranch cow.
- Calving ease throughout this pedigree.

## 62 RED JCC **Bushwacker** 22D

LEVI 22D 10 Feb 2016 1928423 ACT BW: 95 AWW: 738

SIRE	RED RINGSTEAD KARGO 215U	RED RINGSTEAD KARGO 107M				
	RED BLAIR'S BINGO 581B	RED RINGSTEAD MS EQUAL 589P				
	RED WSF MS YANKEE 13T 12W	RED BRYLOR/WSP KARWEIK 1P				
DAM		RED FINE LINE YANKEE 13T				
	RED LAZY MC CC DETOUR 2W	RED RMJ REDMAN 1T				
	RED JCC BELLE 9B	RED LAZY MC BESS 12S				
	RED JCC HAMLEY 27Z	RED NBAR HAMLEY S913				
		RED JCC BELLE 1X				
CE		BW	WW	YW	MILK	TM
• •		1.2	58	84	13	42

- Born unassisted out of a first calf heifer.
- Long sided, smooth made bull.

## BLAIRS.AG RED ANGUS DONOR FEMALES



RED SSS JESSIE 261Z



RX LADY NOLEN 114Y



CORA 867Z



KURUBA 2084Z



KASSIE 129B



RED BLAIR'S BONITA 2B



The next four bulls are all full siblings to the \$76,500 USD Red Blair's Pure Power 2B that sold in the Mile High Sale in Denver in 2015. Red Soo Line Power Eye 161X has become one of the most popular semen sires to make offspring with hair, bone, dimension, calving ease and a bigger foot. When coupled with the moderately made, perfect udder of Nolen 114Y, it makes an intriguing mating. When considering the two full siblings that sell, you should expect calving ease, calves with great growth and feed efficiency. The females should have more pelvic dimension, hair and bone.

**Selling 100% possession and 50% semen interest.**



## 63 RED BLAIR'S Power Eye 4D

BBC 4D

20 Mar 2016

1938364

SIRE	RED COCKBURN RIBEYE 308U	RED BAR-E-L RIBEYE 103R
	<b>RED SOO LINE POWER EYE 161X</b>	RED WILBAR CORA 443P
	RED TR LYNN 301R	RED GEIS KNIGHT HAWK 14'02
		TR LYNN 105L
DAM	RED BIEBER MAKE MIMI 7249	RED BJR MAKE MY DAY 981
	<b>RED RX LADY NOLEN Y114</b>	RED BIEBER SIRENA 6708
	RED RX LADY NOLEN W142	RED FINE LINE MULBERRY 26P
		RED LMF LIZ 1501
	CE	ACT BW
	• • •	84 (ET)
		ADJ WW
		651

## 64 RED BLAIR'S Power Eye 2D

BBC 2D

17 Mar 2016

1938363

SIRE	RED COCKBURN RIBEYE 308U	RED BAR-E-L RIBEYE 103R
	<b>RED SOO LINE POWER EYE 161X</b>	RED WILBAR CORA 443P
	RED TR LYNN 301R	RED GEIS KNIGHT HAWK 14'02
		TR LYNN 105L
DAM	RED BIEBER MAKE MIMI 7249	RED BJR MAKE MY DAY 981
	<b>RED RX LADY NOLEN Y114</b>	RED BIEBER SIRENA 6708
	RED RX LADY NOLEN W142	RED FINE LINE MULBERRY 26P
		RED LMF LIZ 1501
	CE	ACT BW
	• • •	81 (ET)
		ADJ WW
		679



Pure Power 2B  
Full Sibling to Lots 63 - 66



• Selling 100% possession and 50% semen interest.





Lady Nolen 17D  
Full Sibling to Lots 63 - 66

- Selling 100% possession and 50% semen interest.



*Lot* 65

## 65 RED BLAIR'S **Power Eye** 5D

BBC 5D

20 Mar 2016

1938365

SIRE  
RED COCKBURN RIBEYE 308U  
**RED SOO LINE POWER EYE 161X**  
RED TR LYNN 301R

DAM  
RED BIEBER MAKE MIMI 7249  
**RED RX LADY NOLEN Y114**  
RED RX LADY NOLEN W14

RED BAR-E-L RIBEYE 103R  
RED WILBAR CORA 443P  
RED GEIS KNIGHT HAWK 14'02  
TR LYNN 105L

RED BJR MAKE MY DAY 981  
RED BIEBER SIRENA 6708  
RED FINE LINE MULBERRY 26P  
RED LMF LIZ 1501

CE

...

ACT BW

81 (ET)

ADJ WW

636

## 66 RED BLAIR'S **Power Eye** 603D

BBC 603D

18 Mar 2016

1946728

SIRE  
RED COCKBURN RIBEYE 308U  
**RED SOO LINE POWER EYE 161X**  
RED TR LYNN 301R

DAM  
RED BIEBER MAKE MIMI 7249  
**RED RX LADY NOLEN Y114**  
RED RX LADY NOLEN W142

RED BAR-E-L RIBEYE 103R  
RED WILBAR CORA 443P  
RED GEIS KNIGHT HAWK 14'02  
TR LYNN 105L

RED BJR MAKE MY DAY 981  
RED BIEBER SIRENA 6708  
RED FINE LINE MULBERRY 26P  
RED LMF LIZ 1501

CE

...

ACT BW

80 (ET)

ADJ WW

741



Red RX Lady Nolen Y114  
Dam to Lots 63 - 66

- Selling 100% possession and 50% semen interest.



*Lot* 66





## 67 RED BLAIR'S **Power Eye** 739D

BBC 739D

25 Mar 2016

1953846

SIRE	RED COCKBURN RIBEYE 308U	RED BAR-E-L RIBEYE 103R
	<b>RED SOO LINE POWER EYE 161X</b>	RED WILBAR CORA 443P
	RED TR LYNN 301R	RED GEIS KNIGHT HAWK 14'02
		TR LYNN 105L
DAM	RED CRESCENT CREEK FRCHIEF 75L	RED FORSTER CHIEF 7182ET
	<b>RED SOO LINE BANEERRY 5238</b>	RED CRESCENT CREEK DUCHESS 155
	RED SOO MS BANEERRY 3193	RED BASIN SENSATION 702E
		RED SIX MILE BANEERRY 362J
	CE	ACT BW
	...	84 (ET)
		ADJ WW
		834

- A sleep easy, calving ease Power Eye.
- Off the Soo Line Baneberry 238R donor that was bought at the Soo Line dispersal by Wildcat Creek Ranch in Kansas.

## 68 RED BLAIR'S **Iron Hide** 588D

BBC 588D

9 Mar 2016

1953830

SIRE	RED WRIGHTS 832S IRON HIDE 4Z	RED SIX MILE SAKIC 832S
	<b>RED BLAIR'S IRON HIDE 630B</b>	RED BWB FAYE 48N OF TREND
	RED TOWAW DARLINE 15R	RED SVR TALLY 13M
		RED MOUNTAIN ASH DARLINE 6K
DAM	RED CORNER CREEK CASH 2R	RED PIE ATLANTIC 2204
	<b>RED BLAIR'S DYNA 128B</b>	RED NORTHLINE PRINCESS 59L
	RED LAURON MISS DYNA 86S	RED RUNNING BAR PRONTO 26P
		RED LAURON MISS DYNA 50K
	CE	ACT BW
	...	78
		ADJ WW
		726

- Iron Hide 630B was used for his extreme calving ease and maternal strength.
- Wright's Iron Hide 4Z was our \$51,000 purchase from Red Roundup from Wright's in Melfort Sask.
- The dam was the result of a flush we purchased from Lauron Red Angus.



Red Soo Line Baneberry 5238  
Dam of Lot 67



Red Wrights 832S Iron Hide 4Z  
Grandsire of Lot 68



**69** RED BLAIR'S **Encore** 24D

BBC 24D

1 Apr 2016

1928993

SIRE	RED COCKBURN RIBEYE 308U	RED BAR-E-L RIBEYE 103R
	<b>RED COCKBURN ENCORE 106Y</b>	RED WILBAR CORA 443P
	RED COCKBURN MS BOOT JACK 27N	RED SSS BUST'N 596F
DAM	RED JORD REDWOOD 72X	RED COCKBURN MS BOOT JACK 86L
	<b>RED BLAIRS MARTINI 60Z</b>	RED BRYLORSDL REDWOOD 217S
	RED RED TIDE MARTINI 25W	RED TG LASSIE 55R
		RED FINE LINE MULBERRY 26P
		RED JD LANN MARTA 130P
	CE	ACT BW
	• • •	81
		ADJ WW
		777

- Encore has made great commercial bulls for us adding hair, bone and rib.
- Martini 25W and Redwood in this pedigree means you should expect excellent udders. Keep the females off this guy.



Red Blairs Martini 25W  
Maternal Grand Dam of Lot 69

**71** RED BLAIR'S **Encore** 48D

BBC 48D

9 Apr 2016

1929001

SIRE	RED COCKBURN RIBEYE 308U	RED BAR-E-L RIBEYE 103R
	<b>RED COCKBURN ENCORE 106Y</b>	RED WILBAR CORA 443P
	RED COCKBURN MS BOOT JACK 27N	RED SSS BUST'N 596F
DAM	RED NBAR HAMLEY S913	RED COCKBURN MS BOOT JACK 86L
	<b>RED BLAIRS COUNTESS 86Y</b>	RED PIE BILLINGS 487
	RED SOO LINE COUNTESS 6409	RED NBAR KELLY 913
		RED DWAJO GLADIATOR 32L
		RED JCC COUNTESS 14G
	CE	ACT BW
	• •	93
		ADJ WW
		739

- This bull goes back to the Soo Line Countess 409S that Wildcat Creek Ranch purchased in the Soo Line dispersal.
- Check out the Dwajo Gladiator in the pedigree. Gladiator is highly sought after across the country.
- Owned with Rob Saik.



Red Soo Line Countess 6409  
Maternal Grand Dam of Lot 71

**70** RED BLAIR'S **Encore** 42D

BBC 42D

6 Apr 2016

1928997

SIRE	RED COCKBURN RIBEYE 308U	RED BAR-E-L RIBEYE 103R
	<b>RED COCKBURN ENCORE 106Y</b>	RED WILBAR CORA 443P
	RED COCKBURN MS BOOT JACK 27N	RED SSS BUST'N 596F
DAM	RED TOWAW INTEGRITY 17M	RED COCKBURN MS BOOT JACK 86L
	<b>RED JCC LASS 7R</b>	RED TOWAW INDEED 104H
	RED JCC LASS 41N	RED SHODEREE RAMBO 201D
		RED TER-RON MAMBO 28K
		RED JCC LASS 63K
	CE	ACT BW
	• •	94
		ADJ WW
		909

- Lass 7R was the calf at side to Lass 41N when they were the 2015 National Champion Female.
- A 7R x Prowler son sold to Mar Mac and has raised many bulls for them in their sale.
- Longevity and maternal strength in BBC 42D.
- Owned with Rob Saik.



Red JCC Lass 41N with Lass 7R at side  
Maternal Grand Dam of Lot 70

**72** RED BLAIR'S **Encore** 22D

BBC 22D

31 Mar 2016

1928991

SIRE	RED COCKBURN RIBEYE 308U	RED BAR-E-L RIBEYE 103R
	<b>RED COCKBURN ENCORE 106Y</b>	RED WILBAR CORA 443P
	RED COCKBURN MS BOOT JACK 27N	RED SSS BUST'N 596F
DAM	RED SHODEREE DESTINY 114P	RED COCKBURN MS BOOT JACK 86L
	<b>RED BLAIRS PRINCESS 28X</b>	RED SSS STORM 87M
	RED RIVERDALE PRINCESS 120T	RED SHODEREE LEADING LADY 96K
		RED SOO LINE HAWK 5292
		RED RIVERDALE PRINCESS 538N
	CE	ACT BW
	• •	95
		ADJ WW
		721

- The 28X dam was a favorite from our first Genetic Focus sale.
- A big ribbed son of Encore.
- Owned with Rob Saik.

CAN'T MAKE THE SALE  
*Bid Online with*

**DVAuction**  
Broadcasting Real-Time Auctions





Faith 8L  
Dam of Lot 73



Faith 74Y  
Maternal sister to Lot 73

- The Faith 8L cow has raised the CWA and Farm Fair Reserve Champion female and a \$14,000 Integrity daughter that now resides at Brackel Ridge in NY.



*Lot 73*

## 73 RED BLAIR'S **Legacy** 31D

BBC 31D

2 Apr 2016

1938358

SIRE	RED LAZY MC EYE SPY 64Y	LAZY MC LOOKOUT 37U
	<b>RED WPRA LEGACY A-314</b>	RED LAZY MC GOLD DESIGN 68U
	RED WPRA EVERLEDA ENTENSE 610	RED BFCK CHEROKEE CNYN 4912
		ER EVERLEDA ENTENSE P578
DAM	RED BAKERS CENTURY	RED TOWAW MATRIX 19D
	<b>RED BAKERS FAITH 8L</b>	RED MEM MINOLA 71E
	RED BROX FAITH 17C	RED GET-A-LONG APACHE 13S
		RED BRYLOR FAITH 33Y
	CE	ACT BW
	•	89 (ET)
		ADJ WW
		721

## 74 RED BLAIR'S **Legacy** 37D

BBC 37D

4 Apr 2016

1928996

SIRE	RED LAZY MC EYE SPY 64Y	LAZY MC LOOKOUT 37U
	<b>RED WPRA LEGACY A-314</b>	RED LAZY MC GOLD DESIGN 68U
	RED WPRA EVERLEDA ENTENSE 610	RED BFCK CHEROKEE CNYN 4912
		ER EVERLEDA ENTENSE P578
DAM	RED FINE LINE MULBERRY 26P	RED COMPASS MULBERRY 449M
	<b>BLAIRS UPTOWN GIRL 105X</b>	RED DUS FAYETTE 8G
	NLC UPTOWN GIRL 19U	SCHURRTOP MC 2500
		DOUBLE AA BELLA 31'05
	CE	ACT BW
	•	92 (ET)
		ADJ WW
		727



Blair's Uptown Girl 105X  
Dam of Lot 74

- Uptown Girl 105X shows up again in this pedigree. 105X walks the pastures at Weidenbach's in SD and she is worth the time to stop and check her out.



*Lot 74*





## 75 RED BLAIR'S **Venture** 52D

BBC 52D

10 Apr 2016

1929002

SIRE	RED MRLA TILT 80Z	RED LAZY MC CC DETOUR 2W
	<b>RED MRLA VENTURE 26B</b>	RED MRLA MISS 678W
	RED MRLA MISS 588U	RED RINGSTEAD DAWSON 209R
		RED MRLA 793R
DAM	RED BRYLOR WEST JET 69W	RED FLYING K AMBUSH 6T
	<b>RED SSS NELLIE 102Y</b>	RED FLYING K LASSIE 3T
	RED SSS NELLIE 121R	RED SSS BOOMER 803B
		RED SSS NELLIE 800L
	CE	ACT BW
	•	91
		ADJ WW
		738

- A Venture off a SSS Red Angus cow. Venture is an MRL Tilt son we bought together with Semex.
- A well balanced, soft made bull with an excellent skull structure.



## 76 RED BLAIR'S **Navigator** 13D

BBC 13D

28 Mar 2016

2016074

SIRE	RED NBAR NEGOTIATOR L21	RED NBAR VULCAN 507
	<b>RED GCC NAVIGATOR 1233</b>	RED NBAR KELLY 913
	RED LASA DIVIDE R519	RED PIE THUNDERBO 846
		RED PIE LASA DIVIDE 8107
DAM	RED JORD REDWOOD 72X	RED BRYLOR SDL REDWOOD 217S
	<b>RED BLAIRS FAVORITE 57Z</b>	RED TG LASSIE 55R
	RED SOUTHLAND FAVORITE 88T	RED NORTHLINE CRUSH 59R
		RED SOUTHLAND FAVORITE 152P
	CE	ACT BW
	• • •	83
		ADJ WW
		642

- Navigator is an outcross sire we bought from Graystone Cattle in Iowa.
- The dam side includes the 88T donor that currently resides at Rust Mountain View Ranch in ND.
- The Navigators are long spined and good footed.



Red Southland Favorite 88T  
Maternal Grand Dam of Lot 76



## 77 RED BLAIR'S **Navigator** 85D

BBC 85D

22 Apr 2016

2016098

SIRE	RED NBAR NEGOTIATOR L21	RED NBAR VULCAN 507
	<b>RED GCC NAVIGATOR 1233</b>	RED NBAR KELLY 913
	RED LASA DIVIDE R519	RED PIE THUNDERBO 846
		RED PIE LASA DIVIDE 8107
DAM	RED KKC EXCALIBUR 9X	RED KKC JRC STERLING 762T
	<b>RED KKC MS DEMAND 10Z</b>	RED LASO DORY JIBA DR 125R
	RED KKC CHAT CANY 302W	RED DKK DEMAND N22
		RED SR LUCY GALENA 65G
	CE	ACT BW
	•	95
		ADJ WW
		747

- The 010Z dam was a purchase from Kalkota Ranch in ND and she has become a favorite at our place.
- Navigator was Reserve Champion Bull at the Denver National Stock Show.



**78** RED BLAIR'S **Ambush** 107D

BBC 107D

13 May 2016

1931724

SIRE	RED FLYING K AMBUSH 121U	RED SVR AMBUSH 59P
	<b>RED SSS AMBUSH 771X</b>	RED FLYING K BEAUTY 40R
	RED SSS JOE 369S	RED SSS SHIVER'N JOE 699P
		RED SSS KURUBA 842L
DAM	RED BLAIR'S DAYTONA 116U	RED FINE LINE MULBERRY 26P
	<b>RED BLAIR'S PRINCESS 949Z</b>	RED JCC LASS 41N
	RED JCC ROXIE 20S	RED TER-RON MAMBO 28K
		RED JCC ROXIE 73M
	CE	ACT BW
	•	105
		ADJ WW
		784

- This pedigree is stacked with maybe some of the best maternal genetics in the land.
- Ambush 771X has left beautiful females.
- Roxie 20S has always been a favorite here and is now owned by Powe's in Australia.

*Lot 78***79** RED BLAIR'S **Ambush** 69D

BBC 69D

15 Apr 2016

1931672

SIRE	RED FLYING K AMBUSH 121U	RED SVR AMBUSH 59P
	<b>RED SSS AMBUSH 771X</b>	RED FLYING K BEAUTY 40R
	RED SSS JOE 369S	RED SSS SHIVER'N JOE 699P
		RED SSS KURUBA 842L
DAM	RED TER-RON MAMBO 28K	RED YY RED KNIGHT 640F
	<b>RED BLAIR'S GOLDEN 3U</b>	RED ALDER ABG STAR DUST 8G
	RED PIPESTONE GOLDEN 72K	RED PIPESTONE BOND 165B
		RED PIPESTONE GOLDEN 37E
	CE	ACT BW
	• • •	83
		ADJ WW
		699

- Ambush and Mambo means you get both maternal strength and power.
- Ambush is no longer breeding cows so these will be some of the last on offer.

Red JCC Roxie 20S  
Maternal Grand Dam of Lot 78Red JCC Roxie 20S  
Maternal Grand Dam of Lot 78*Lot 79***80** RED BLAIR'S **Recoil** 548D

BBC 548D

25 Feb 2016

1938366

SIRE	RED BAR-E-L WARDEN 144W	RED BAR-E-L RIBEYE 103R
	<b>RED T-K RECOIL 72Y</b>	RED BAR-E-L LARKABA 72N
	RED T-K ANNA 54T	RED T-K PERCISION 21P
		RED T-K ANNA 13K
DAM	RED FLYING K PRINCE 302P	RED LODI PRINCE 2632
	<b>RED WILBAR LANA 688S</b>	RED FLYING K BARONNESS 81G
	RED WILBAR LANA 346N	RED SIX MILE KNOCKOUT 459K
		RED HEAD LANA 15K
	CE	ACT BW
	•	80 (ET)
		ADJ WW
		633

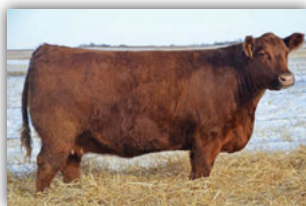
- Recoil was the Royal Bank Supreme Champion bull.
- Lana 688S is a big ribbed, long made donor.

*Ambush*

Red SSS Ambush 771X







Red Brylor Bonita 204T  
Dam of Lot 81



Red Blair's Bonita 179A  
Maternal Siblings to Lot 81



Red Blair's Bonita 3B  
Maternal Siblings to Lot 81



Red Blair's Bonita 2B  
Maternal Siblings to Lot 81

- Bonita 204T has raised many a good one and this Hot Shot is exactly that.
- Maternal sister sold to Argentina and was division champion in Denver.



*Lot 81*

## 81 RED BLAIR'S **Hot Shot** 6003D

BBC 6003D

6 Mar 2016

2016099

SIRE	RED HXC BLUE MOON 1101Y	RED BECKTON NEBULA P P707
	<b>RED HXC HOT SHOT 4424B</b>	RED HXC INDIGO 315N
	RED HXC JAYLO 4424B	RED BJR MAKE MY DAY 981
		RED HXC JAYLO 953J
DAM	RED FINE LINE MULBERRY 26P	RED COMPASS MULBERRY 449M
	<b>RED BRYLOR BONITA 204T</b>	RED DUS FAYETTE 8G
	RED BRYLOR BONITA 66K	RED RD DIVIDEND 7F
		RED BRYLOR CHEROK 40X
	CE	ACT BW
	• • •	80
		ADJ WW
		610

## 82 RED BLAIR'S **Signature** 552D

BBC 552D

25 Feb 2016

1929521

SIRE	RED SIX MILE GRAND SLAM 130Z	RED VGW GAME PLAN 816
	<b>RED SIX MILE SIGNATURE 295B</b>	RED SIX MILE REBECCA 216X
	RED SELMA OF SIX MILE 358X	RED SIX MILE UNLEASHED 595U
		RED RSL MISS SELMA 384F
DAM	RED SMW SMACK 31U	RED LAZY MC SMASH 7S
	<b>RED WRAZ MARTA 42Y</b>	RED D-BAR VALENTINE 3M
	RED TOPLINE MARTA 807	RED FINE LINE MULBERRY 26P
		RED VARA MARTA 103J
	CE	ACT BW
	• •	87
		ADJ WW
		660



Red Six Mile Signature 295B  
Sire of Lots 82 - 84

- The Marta 42Y dam has as good of an udder as you can put on one. She is now owned by Larry Hafer in Nebraska.
- Signature produces long made, dark red calves.
- Keep the females for sure.



*Marta*

Red Wraz Marta 42Y  
Dam of Lot 82





Red Six Mile Signature 295B  
Sire of Lots 82 - 84

- The 169Y cow from Brylor's is a favorite of mine.
- Maternal sister sold for \$17,000.



*Lot* 83

### 83 RED BLAIR'S *Signature* 6D

BBC 6D

21 Mar 2016

1935737

SIRE	RED SIX MILE GRAND SLAM 130Z	RED VGW GAME PLAN 816
	<b>RED SIX MILE SIGNATURE 295B</b>	RED SIX MILE REBECCA 216X
	RED SELMA OF SIX MILE 358X	RED SIX MILE UNLEASHED 595U
		RED RSL MISS SELMA 384F
DAM	RED LCHMN GOLD ROBBER 1909E	RED LMAN KING ROB 8621
	<b>RED BRYLOR FAY 169Y</b>	RED LACHMAN LARKABA 6384
	RED PIE FAYE 2212	RED PIE PRIME TIME 884
		RED PIE MS FAYE DUKE 509
	CE	ACT BW
	•	81
		ADJ WW
		727

### 84 RED BLAIR'S *Signature* 609D

BBC 609D

26 Mar 2016

1929536

SIRE	RED SIX MILE GRAND SLAM 130Z	RED VGW GAME PLAN 816
	<b>RED SIX MILE SIGNATURE 295B</b>	RED SIX MILE REBECCA 216X
	RED SELMA OF SIX MILE 358X	RED SIX MILE UNLEASHED 595U
		RED RSL MISS SELMA 384F
DAM	RED NORTHLINE ATLANTIC CITY	RED PIE ATLANTIC 2204
	<b>RED WHEEL ANNIE OAKLEY 82W</b>	RED NORTHLINE QUEEN 240H
	RED RSL ANN 920L	RED RSL BASIC INSTINCT 574H
		RED RSL ANNIE 433F
	CE	ACT BW
	•	92
		ADJ WW
		816



Red Six Mile Signature 295B  
Sire of Lots 82 - 84

- 82W was the Reserve Champion Cinderalla Champion in Saskatoon.
- If you want to add a little frame this bull is for you.
- The calves off 609D should be blood red.



*Annie*

Red Wheel Annie Oakley 82W  
Dam of Lot 84



## 85 RED JCC **GJ** 44D

LEVI 44D 7 Apr 2016 1906856 ACT BW: 93 AWW: 683

SIRE	RED VGW GAME PLAN 816				RED VGW GAME PLAN 508	
	RED SIX MILE GRAND SLAM 130Z				RED VGW TW DOLL 0270	
DAM	RED SIX MILE REBECCA 216X				RED SSS BUCC 30U	
					RED WILBAR REBECCA 234M	
	RED NBAR HAMLEY S913				RED PIE BILLINGS 487	
	RED JCC CHEYENNE 20Y				RED NBAR KELLY 913	
	RED JCC CHEYENNE 12W				RED TER-RON PROWLER 833T	
					RED JCC CHEYENNE 64P	
	CE	BW	WW	YW	MILK	TM
	• •	0.1	53	80	20	46

- Moderate framed with good muscle.
- Dam has a standout heifer calf in the pen this year.



*North Dakota*

Red Rust North Dakota 27B  
Sire of Lot 87

## 86 RED SIX MILE **Dierks** 585D

SIXM 585D 4 Apr 2016 1932750 ACT BW: 84 ADJ WW: 803

SIRE	RED SIX MILE KING RANCH 721W <b>RED L83 SUPER DUTY 244Z</b> RED L83 BERTHA 077	RED 5L NORSEMAN KING 2291 RED SIX MILE COUNTESS 198T RED L83 ENTOURAGE RED MESSMER BERTHA 062P  RED VGW GAME PLAN 816 RED SIX MILE LAKOTO 35W RED SIX MILE TIMBERLAKE 180T RED SIX MILE SEXY SYRINGA 515U				
	RED SIX MILE GAME FACE 164Y <b>RED SIX MILE SEXY SYRINGA 151B</b> RED SIX MILE SEXY SYRINGA 264X					
DAM						
	CE	BW	WW	YW	MILK	TM
	• • •	-0.3	80	132	18	58

## 87 RED BLAIR'S **North Dakota** 613D

BBC 613D 2 Apr 2016 1952967

SIRE	RED C-T GRAND STATEMENT 1025 <b>RED RUST NORTH DAKOTA 27B</b> RED BKT LARKEISA M288 CK	RED LJC MISSION STATEMENT P27 RED C-T MISS PAN 0760 RED BECKTON COLT G552 RED BKT LARKEISA D822 CB	
	RED RINGSTEAD KARGO 215U <b>RED BLAIR'S HONEY 544B</b> RED BLAIRS HONEY 102Z	RED RINGSTEAD KARGO 107M RED RINGSTEAD MS EQUAL 589P RED CORNER CREEK CASH 2R RED ASPEN HONEY 97M	
DAM	CE	ACT BW	ADJ WW
	• • •	78	712

- This is the lone Rust North Dakota son selling but watch for more in the future.
- North Dakota is the largest sire group selling in the SSS bull sale this year.
- North Dakota calves are earlier maturing and bigger ribbed.
- Kargo and North Dakota is an interesting mating.
- Calving ease, calving ease, calving ease.

## BLAIRS.AG RED ANGUS HERD SIRE LINE UP



DAMAR TRUMP



SECRETARIAT 5274



KJHT PTO



# Platinum Warranty Program

Blairs.Ag Cattle Company guarantees to sell a bull that is sound and has passed a semen test by an accredited veterinarian. Should any bull purchased through the Pursuit of Excellence bull sale fail to be a satisfactory breeder or be unable to physically service a cow or heifer, he will be replaced with a bull of equal value. Should this not be possible, we will issue a credit to go towards the purchase of another bull. We will not however provide warranty for mismanagement.

While under our warranty, the bull is covered for injury, sickness or death. We will service your needs with a replacement bull, a sale credit or a cash settlement. Should you have any problems with a bull, please contact Blake MacMillan and he will work to make sure your cows get bred and you are a satisfied customer. We do have back up bulls set aside and that will be the first step to cover off any warranty issues. Blair's Platinum Bull Warranty is designed to protect your purchase during the most high risk time of a bull's life.

We offer the following options and are required to be paid on the day of the sale. It is the buyer's responsibility to purchase at the settlement desk.

PLAN	DURATION	RATE
#1	45 days	3%
#2	6 months	6%
#3	12 months	10%
#4	18 months	14%

## COVERAGE:

Plan #1 – This plan is designed to warranty a bull from sale time until the bull can be delivered and has the opportunity to adjust to its new surroundings. The length of the Plan #1 warranty is 45 days. Plan #1 warranty covers 100% of the purchase price less the salvage value when applicable.

Plan #2– This plan covers the bull through breeding season and is 100% of the purchase price less the salvage value when applicable.

Plan #3 – This plan covers the bull for a full year which will include one(1) breeding season and one wintering period. In Plan #3 the warranty covers 100% of the purchase price less the salvage value when applicable.

Plan #4 – This plan covers the bull for eighteen(18) months and should cover two(2) breeding seasons and one(1) wintering period. In Plan #4 the warranty covers 100% of the purchase price for the first year(365 days) and 75% of the purchase price for the remaining six(6) months. In both situations the salvage price of the bull is deducted from the purchase price before the settlement is made.

## EXCLUSION TO WARRANTY:

Any injury or death due to malicious, willful or intentional acts or mistreatment are considered fraudulent claims.

Should an issue arise with your bull please notify Blair's immediately by phone 306-528-7484 or by email [bmacmillan@blairs.ag](mailto:bmacmillan@blairs.ag). You will also need to contact a licensed veterinarian to diagnose and treat the animal and fill out a vet form. If the animal dies, a post mortem will be required.

Note: All bulls that are left at Jackson Cattle after the sale for delivery will be automatically charged the 45 day Plan #1 bull warranty on their invoice. This is designed to protect both the buyer and seller.

# *Join us in Sedley, Saskatchewan*

## **Jackson Cattle Co. Sale Facility**

Box 159, Sedley, SK S0G 4K0  
Phone: 306.537.9251

From Sedley: Go 4 miles north on 620, then 1/2 mile west and 1/2 mile back north.



## GENETICS FOR SALE BY *Private Treaty*

- Packages Of Commercial Cow/Calf Pairs
- Packages Of Purebred Cow/Calf Pairs
- Packages Of Purebred Heifer Calves
- Semen
- Embryo's

*Contact us for details!*



# Blairs.Ag Influence

## *Commercial Heifer Sale*

December 11, 2018

Johnstones Auction, Moose Jaw, SK

# 250

RED AND BLACK ANGUS  
INFLUENCED BRED FEMALES  
SELL FROM BLAIRS.AG AND  
OUR PARTNERS...

ALL HEIFERS Sired BY AND BRED  
TO BLAIR'S.AG BULLS

TJ Farms  
Trevor Blair  
306-365-8251

Blairs West Land & Cattle  
Scott Blair  
306-365-7649



Kevin & Noreen Blair  
Darren & Deb Blair  
Lanigan, SK Canada  
[www.blairscattleco.com](http://www.blairscattleco.com)

Kevin Blair	306.365.7922	<a href="mailto:kevin@blairs.ag">kevin@blairs.ag</a>
Blake MacMillan	306.528.7484	<a href="mailto:bmacmillan@blairs.ag">bmacmillan@blairs.ag</a>
Chad Haaland	306.544.7770	<a href="mailto:haalandcattle@yahoo.ca">haalandcattle@yahoo.ca</a>
Scott Johnstone	306.631.0767	Johnstone Auction Mart



Return Undeliverable  
Canadian Addresses To:  
T Bar C Cattle Co. Ltd.  
Box 2330  
Warman, Saskatchewan S0K 4S0



Created By  
**T**ODAY'S  
PUBLISHING