

APRIL 2 • 2013 • 1PM • SEDLEY SASKATCHEWAN



*Pursuit of*  
**EXCELLENCE**  
**BULL SALE '13**

1PM • Jackson Cattle Co. Sale Facility, Sedley, SK

 **Blairs. Ag**  
cattle company

*Guest Consignors:*

MICHELSON LAND AND CATTLE • NEXERA LAND AND CATTLE  
MAINSTREAM GENETICS • MIDNIGHT FIRE CATTLE CO • JACKSON CATTLE CO

# *Pursuit of* **EXCELLENCE**

## **WELCOME TO THE SALE**

On behalf of our entire team, I would like to welcome you to the 2013 "Pursuit of Excellence" bull sale and thank you for the confidence in our program. We are committed to continually improving the Angus breed, and we search the continent to ensure we have the genetics required to make that happen. Each year we enhance our embryo program to allow our genetic advancement to move at a high speed. This year we again increased our ET program to include about 25 donors and 250 recipis.

2013 is going to turn out to be a pivotal year in the life cycle of agriculture. 2012 was unique in that we saw strong livestock and grain prices at the same time. Everyone was concerned about how long livestock prices could remain strong in the new era of strong grain prices. Most people believed that if one sector had to give in terms of price, it would be the livestock industry BUT 2013 is going to disprove those theories. The fundamental imbalance of supply and demand in the livestock business will result in a great run in the foreseeable future. For the first time in a long time, we are also seeing a shift in the protein market away from chicken and pork, and the preference of the urban consumer, is now beef. Consumers prefer beef because they believe the environment beef cattle are raised in is closer to nature and that beef cattle are raised in a more humane natural environment.

This year's bull sale offering is our best yet and we are so proud of the increased size and quality of our 2-year-old group. Our 2-year-old bulls have gone through more culls for phenotype, feet, legs and attitudes. If you want bulls that will quite simply breed more cows, bring home more pounds of beef and come home every fall then give us a call.

Be proud of your place in agriculture and we will see you on sale day.

Sincerely,

*Kevin Blair*

**KEVIN & NOREEN BLAIR     DARREN & DEB BLAIR**

PO Box 610 • Lanigan, Saskatchewan S0K 2M0  
Tel: cell (306) 365-7922 • office (306) 365-3150  
Email: kevin@blairs.ag   darren@blairs.ag

**[www.blairscattleco.com](http://www.blairscattleco.com)**



**APRIL 2, 2013 :: 1PM :: SEDLEY SK**

**:: 80 TOP QUALITY ::**

**2-YEAR-OLD & YEARLING BLACK & RED ANGUS BULLS**

## **SALE DAY PHONES**

Sale Barn..... 306-885-4418  
Kevin Blair..... 306-365-7922  
Darren Blair..... 306-360-7707  
Kelly Schmidt..... 306-365-7138  
Chris Schmidt..... 306-946-7948  
Blake MacMillan... 306-528-7484

Shane Michelson....403-363-9973  
Patty Smith..... 306-528-7592  
Chad Haaland..... 306-544-7770  
Craig Blair..... 306-699-7607  
Levi Jackson..... 306-537-9251  
Herb Friesen..... 306-360-7465

### **AUCTIONEER**

Chris Poley..... 306-220-5006

### **SALE MARKETING AGENTS**

#### *Ringmen*

Nate Marin..... 306-869-7130  
Ryan Dorran ..... 403-507-6483  
Dennis Ericson..... 780-361-9347

#### *Bohrson Marketing*

Scott Bohrson..... 403-370-3010  
Geoff Anderson..... 306-731-7921

#### *Castlerock Marketing*

Shane Castle..... 306-741-7485

#### *Red Cow Relocators*

Stuart Gilbert ..... 641-919-0196

#### *Sale Day Consultants*

Ben Wright..... 519-374-3335

### **SIGHT UNSEEN PURCHASES**

If you are unable to make the sale, we will help you with your selection and guarantee your satisfaction!

### **ONLINE BIDDING**

Register online at [www.dlms.ca](http://www.dlms.ca) or call Mark Shologan for assistance at 780-699-5082

### **SPECIAL GUEST**

Rob Smith, CEO, Canadian Angus Association

### **DELIVERY**

*Receive \$100 rebate/bull that you take home sale day!*

Bulls will be delivered free of charge anywhere in Saskatchewan, Alberta and Manitoba. Delivery will start the week after the sale.

For US customers we will delivery bulls free of charge to central locations in northern and central USA.

### **ACCOMMODATIONS**

Days Inn Regina, 306-522-3297  
or contact Blake MacMillan at (306) 528-7484.

### **FINANCING OPTIONS**

Call us about our financing tools.

### **CALVING EASE RATING**

Bulls with the "5-Star Calving Ease" designation possess the ability to produce offspring that are moderate in birthweight and can be bred to both cows and medium to larger framed heifers.

### **ONLINE VIDEOS**

[www.cattleinmotion.com](http://www.cattleinmotion.com)

### **PHOTOGRAPHY**

Grant Rolston :: Allan Browarny

# PRESENTED BY



PO Box 610 • Lanigan, SK S0K 2M0 • office 306-365-3150

Kevin's cell 306-365-7922 • kevin@blairs.ag

Darren's cell 306-360-7707 • darren@blairs.ag

www.blairscattleco.com

## Map to the Sale Facility



From Sedley: 4 miles North, 1/2 mile West and 1/2 mile North

### Jackson Cattle Co.

Levi & Carmen Jackson and family

Box 159 Sedley, Sask. S0G 4K0

Tel: 306-885-4418

### Mainstream Genetics

Chris, Jasmine, Davis and Jenna Schmidt

Box 72 Watrous, SK S0K 4T0

Tel: (306) 946-2616

### Michelson Land & Cattle

Shane & Alaina Michelson and family

Box 343 Lipton, SK S0G 3B0

Tel: 306-336-2622

### Midnight Fire Cattle Co.

Herb & Donna Friesen and family

Box 22 Drake Sask. S0K 1H0

Tel: 306-363-2203

E-mail: hdtfriesen@sasktel.net

### Nexera Land & Cattle Co.

Kelly & Paula Schmidt

Box 111 Drake, Sask. S0K 1H0

Tel: 306-363-2229

E-mail: kelly@blairs.ag

# GUEST CONSIGNORS

---



Jackson Cattle Co is a family owned operation consisting of Levi and Carmen Jackson, and their children Dakota and Chance. We are very pleased to be able to work with the whole Blairs.Ag crew, and are managing their ET program and sale bulls. Visitors are always welcome at JCC.

*Levi & Carmen, Dakota and Chance Jackson*



Mainstream Genetics is a family owned operation; Chris and Jasmine Schmidt, along with their two kids, Davis and Jenna, run a mixed farm near Watrous, SK. We have been involved in the livestock industry all our lives, but are relatively new to the Angus breed. With that, one of our goals has always been to align ourselves with strategic partners and Blairs.Ag is no exception. Mainstream Genetics focuses on producing sound, functional cattle that will work for both the purebred industry and the commercial cattleman. We are excited to partner with Blairs.Ag and invite you to join us April 2<sup>nd</sup> and be a part of that excitement.

*Chris & Jasmine Schmidt*



Michelson Land & Cattle is a family operation owned by Shane and Alaina Michelson. We are passionate about both the purebred Angus business and the grain industry. Our program is designed around identifying new leading edge genetics to help shape the future of the Angus breed. We are excited to join the Blairs.Ag team in the "Pursuit of Excellence".

*Shane & Alaina Michelson*



Midnight Fire Cattle Co. is excited to be part of the Blairs.Ag and Guests "Pursuit of Excellence" Bull Sale. Our offering this year consists of top quality 2-year-old bulls that we are pleased to say come from our herd. We believe in raising good quality, easy keeping, easy fleshing, quiet disposition, hardworking, and long lasting animals. Our animals go through a tough selection process, and only the best stick around for sale or replacements. Take a look at what we have to offer and we hope it fits in with your breeding program.

*Herb & Donna, Tami-Lynn, Tonja, Terrell, Tobia and Teresa Friesen*



Nexera Land & Cattle Co. is a family operation that is owned by Kelly & Paula Schmidt and our children Hadley and Tate. We are excited to be a part of a sale of this caliber, with breeders that share our same goals. We believe in producing sound, structurally correct bulls with performance and good hair while maintaining ease of birth and excellent vigor. Please join us on April 2<sup>nd</sup> and join in our "Pursuit of Excellence."

*Kelly & Paula Schmidt*



# 2013

## GENETIC ADVANCEMENT TEAM



Kevin



Darren



Craig



Kelly



Chris



Patty



Blake



*Top photo, from left:* Craig Blair, Kelly Schmidt, Kevin Blair, Darren Blair, Chris Schmidt  
(missing: Patty Smith & Blake MacMillan)

*Middle photo:* Chad & Carissa Haaland and family

*Bottom photo:* Levi & Carmen Jackson, Chance, Dakota

Kevin Blair .....	306-365-7922
Darren Blair .....	306-360-7707
Craig Blair .....	306-699-7607
Kelly Schmidt .....	306-365-7138
Chris Schmidt .....	306-946-7948
Patty Smith .....	306-528-7592
Chad Haaland .....	306-544-7770
Levi Jackson .....	306-537-4690
Blake MacMillan .....	306-528-7484



# Pursuit of EXCELLENCE



BLAIR'S

**1**

## BLAIRS NEW GENERATION 302Z

BBC 302Z January 19 2012 #1709999

PERF	BW	205D	365D	EPDs	BW	WW	YW	Milk	TM
	94	605			5.6	44	83	17	

BLAIR'S

**2**

## BLAIRS NEW GENERATION 303Z

BBC 303Z January 19 2012 #1695420

PERF	BW	205D	365D	EPDs	BW	WW	YW	Milk	TM
	90	710			5.6	44	83	17	

BLAIR'S

**3**

## BLAIRS NEW GENERATION 226Z

BBC 226Z January 27 2012 #1703409

PERF	BW	205D	365D	EPDs	BW	WW	YW	Milk	TM
	101	569			5.6	44	83	17	

O C C GENESIS 872G  
**DUFF NEW GENERATION 6107**  
 O C C DIXIE ERICA 814G

VERMILION DATELINE 7078 AMF CAF NHF  
**MVF TIBBIE 60M**  
 MVHF TIBBIE 39B

O C C DOCTOR 940D CAF  
 BLACKBIRD OF R R 1204  
 O C C ANCHOR 771A CAF  
 O C C DIXIE ERICA 764C  
 CONNEALY DATELINE  
 VERMILION BLACKBIRD 5044  
 V D A R NEW TREND 315 AMF CAF NHF  
 MVHF TIBBIE 31Z

Here is a very unique opportunity to buy from the gene pool that includes the great Tibbie 60M donor from MVF and Duff New Generation 6107. These three bulls are powerful and represent an outcross. If you need sires to take your program to a new level then sweep the ring here. Tibbie 60M progeny have sold to Westwood Land & Cattle, Dugdale Ag Co., Freyburn Farms, Torey Haggarty, Garth Soder, and Sundsbank Farms.



Sire of Lots 1, 2, 3, 6, 49, 50 - Duff New Generation 6107



Dam of Lots 1, 2 & 3 - MVF Tibbie 60M





BLAIR'S

4

## BLAIRS MOTIVE 215Z

BBC 215Z January 19 2012 #1709767

HF KODIAK 5R AMF CAF NHF MAF  
**SOO LINE MOTIVE 9016**  
TLA BEAUTY 5R

CLOVER LANE SHREK  
**LD ELMGROVE LUSCIOUS 280M**  
BIPPERS QUEEN 3420

SANDY BAR ADVANTAGE 43M  
WILBAR RUBY 955N  
RR 7407 RAINMAKER 2154  
TERRLENE BEAUTY 35F  
G D A UNIVERSE 726G  
CLOVER LANE SHANIA 4J  
SITZ TRAVELER 043  
KRUEGERS QUEEN 342E M D

PERF	BW	205D	365D	EPDs	BW	WW	YW	Milk	TM
	98	783			4.7	59	104	20	

215Z is a stylish powerful Motive son off the very proven 280M cow out of the Elmgrove program in Ontario. Motive has become the most popular new sire in North America and this son is very cool. Progeny off 280M have sold to Tozak Land and Cattle Co., K Palmer Farms Ltd, Arda Farms, Larry Taylor and Jayne Easton-Rutten.

BLAIR'S

5

## BLAIRS KODIAK 213Z

BBC 213Z January 18 2012 #1695418

SANDY BAR ADVANTAGE 43M  
**HF KODIAK 5R AMF CAF NHF MAF**  
WILBAR RUBY 955N

DOUBLE D QUANTUM 4R  
**DWAJO BONNY 51T**  
DRYLAND BONNY 470

TC ADVANTAGE AMF CAF NHF  
SANDY BAR JEMINA 44K  
VERMILION YELLOWSTONE AMF CAF NHF  
WILBAR RUBY 161J  
C H QUANTUM 3330  
G H Y SANTELLA 9M9 264  
CAR ICEBERG 056  
LLB BONNIE 354H

PERF	BW	205D	365D	EPDs	BW	WW	YW	Milk	TM
	97	655			4.0	44	80	19	

Here is an opportunity to buy a Kodiak son. Kodiaks are earning a reputation as being highly maternal and the females have great udders. Progeny off the dam Dwajo Bonnie 51T have sold to 2B Land & Cattle Company and Hoium Bros. Livestock Corp.



BLAIR'S

6

## BLAIRS NEW GENERATION 311Z

BBC 311Z January 27 2012 #1710000

O C C GENESIS 872G  
**DUFF NEW GENERATION 6107**  
O C C DIXIE ERICA 814G

VERMILION DATELINE 7078 AMF CAF NHF  
**CARRUTHERS MAYFLOWER 43N**  
CARRUTHERS MAYFLOWER 12J

O C C DOCTOR 940D CAF  
BLACKBIRD OF R R 1204  
O C C ANCHOR 771A CAF  
O C C DIXIE ERICA 764C  
CONNEALY DATELINE  
VERMILION BLACKBIRD 5044  
R R SCOTCHCAP 9440 AMF NHF  
CARRUTHERS MAYFLOWER 10E

PERF	BW	205D	365D	EPDs	BW	WW	YW	Milk	TM
	88	682			4.9	46	81	18	41

311Z has been a standout since birth but it is no wonder as his dam is the great donor Carruthers Mayflower 43N. Duff New Generation 6107 sons are becoming highly sought after and progeny of 43N have sold to Roy Mac Angus Farms, One Earth Farms, Harold Reich, Crittall Livestock Company Ltd and Jackson Cattle Company.





BLAIR'S

7

## BLAIR'S YELLOWSTONE 238Z

BBC 238Z February 11 2012 #1715162

CUDLOBE YELLOWSTONE 80M  
**SOO LINE YELLOWSTONE 6344**  
 ANGUS GLEN FAVORITE 9N MAF

S A V FINAL ANSWER 0035 AMF CAF NHF  
**SOO LINE LADY SANDY 6039**  
 EASTONDALE LADY SANDY 118'04

VERMILION YELLOWSTONE AMF CAF NHF  
 STEVENSON ENCHANTRESS 425F  
 BT RIGHT TIME 24J AMF CAF NHF  
 ANGUS GLEN FAVORITE 6G  
 SITZ TRAVELER 8180 AMF CAF NHF  
 S A V EMULOUS 8145 CAF  
 DRYLAND ICEBERG 231  
 KBJ LADY SANDY 562K

PERF	BW	205D	365D	EPDs	BW	WW	YW	Milk	TM
	90				2.2	49	84	24	

238Z has calving ease throughout his pedigree. Final Answer has proven to be easy calving but also makes fabulous cows. This unique genetic piece needs your serious attention. Progeny off Sandy 6039 have sold to Quarter Circle E Land & Cattle and Tesch Bros.

BLAIR'S

8

## BLAIR'S OLD POST 318Z

BBC 318Z February 22 2012 #1715016

DOUBLE AA OLD POST BANDOLIER AMF CAF  
**REMINGTON OLD POST 827W**  
 SCA 24E OF IDEAL 1418 7394

G A R PREDESTINED AMF CAF NHF  
**BABY BLACK PRE LUCY 506S**  
 ROYAL LUCY DRCC 1068L

DOUBLE AA BLACKMAN 252'96  
 DOUBLE AA ANNIE K 548'99  
 IDEAL 1418 OF 8103 4286 AMF CAF NHF  
 IDEAL 7394 SUPER X 5189 5275  
 B/R NEW DESIGN 036 AMF CAF NHF  
 G A R EXT 4206  
 SITZ TRAVELER 043  
 THOMAS LUCY 6064

PERF	BW	205D	365D	EPDs	BW	WW	YW	Milk	TM
	84	760			2.0	42	83	22	

318Z is the Old Post calf off the great 506S donor that sold in our 2012 Genetics in Motion female sale. If you want to add depth, maternal and milk to your program then get this calf bought.



Dam of Lot 8 - Baby Black Pre Lucy 506S





# 2013



MICHELSON

9

## MICH TOTAL SOLUTION 1202

MICH 1202Z February 09 2012 #1707693

EXAR SUDDEN IMPACT 1537 AMF CAF NHF  
**EXAR PIT BOSS 409 AMF CAF**  
WK WINNIE 7305

EXAR MERIT 216  
**RR ENVIOUS BLACKBIRD 4487**  
RR ENVIOUS BLACKBIRD 0290

NORTHERN IMPROVEMENT 4480 GF  
B L R BLUSHING PRIDE 9097  
KRUGERRANDS MONEYLINE  
WK WINNIE 5460  
BON VIEW NEW DESIGN 1407 AMF CAF NHF  
DIXIE ERICA OF R R 7530  
C H REGAL 7299  
R R ENVIOUS BLACKBIRD 1550

PERF	BW	205D	365D	EPDs	BW	WW	YW	Milk	TM
83	920			1.9	44	75	21	42	

MICH Total Solution 1202z is a powerful, stout, son of the deceased EXAR Pit Boss 409. He is a big bodied, big hipped extremely hairy bull who excels in in a combination of performance and phenotype. He is an embryo calf who has excelled since birth. His dam RR Envious Blackbird 4487 never misses and has progeny working at Harvest Angus, Triple L Angus, and Anderson Cattle Co. She has been in our embryo program and four daughters have been retained for our program. MICH Total Solution is the total package of performance, phenotype all tied together with a tremendous disposition that is second to none.



Sire of Lot 9 - EXAR Pit Boss 409



# Pursuit of EXCELLENCE



MICHELSON

**10**

## MICH SC WILEY POST 1271Z

MICH 1271Z March 13 2012 #1702201

BC 7022 RAVEN 7965 DMF DWF AMF CAF NHF  
**RC WILEY POST 9304B EXAR**  
WK WINNIE 7305

RITO 616 OF 4B20 6807 AMF CAF NHF  
**EXAR WINNIE 6371 R3 AMF NHF**  
EXAR WINNIE 4522

B C MARATHON 7022  
O C C BLACKBIRD 796F  
KRUGERRANDS MONEYLINE  
WK WINNIE 5460  
D H D TRAVELER 6807 AMF NHF  
RITA 4820 OFB1 BANDO  
BR MIDLAND AMF CAF NHF  
EXAR WINNIE 2474

PERF	BW	205D	365D	EPDs	BW	WW	YW	Milk	TM
	83	1067			0.7	53	84	11	38

1271Z has had many admirers from anyone who has seen him. He is as deep sided and stout as you would want, with a tremendous hip, loaded with bone and power. His dam is a beautiful 616 daughter out of the famous WK Winnie 7305 cow family. A maternal brother was a high seller in last year's sale selling to Brendale Acres and Johnson Livestock. MICH SC Wiley Post is truly a combination of power and performance while still maintaining a beautiful phenotype and presence about him. A true sale feature.



Sire of Lots 10, 11, 12, 13 & 14 - RC Wiley Post 9304B EXAR

# 2013



MICHELSON

11

## MICH WILEY POST 1222Z

MICH 1222Z March 03 2012 #1715029

BC 7022 RAVEN 7965 DMF DWF AMF CAF NHF  
**RC WILEY POST 9304B EXAR**  
 WK WINNIE 7305

TR 004 TRAVELER 3014 CAF  
**TR MS BLACKCAP GAL 7084T**  
 TR MS BLKCAP GAL 2147M AMF NHF

B C MARATHON 7022  
 O C C BLACKBIRD 796F  
 KRUGERRANDS MONEYLINE  
 WK WINNIE 5460  
 S A V 8180 TRAVELER 004  
 S A V PRISCILLA 1195  
 T&S MR PRECISION 9045  
 T&S MS BLACKCAP GAL 9175

PERF	BW	205D	365D	EPDs	BW	WW	YW	Milk	TM	5 Star CE
	77	824			0.2	36	63	20		

1222z is a very attractive bull blending together BC Raven and 004. He is a smooth built bull with a beautiful hip, tons of shape and an awesome phenotype. His 004 dam never misses and a maternal brother was a high seller in the 2011 Pursuit of Excellence sale selling to Kevin Woods and his Westwood Land and Cattle operation. 1222Z would be recommended for heifers. A very attractive bull that the picture does not do justice for.

MICHELSON

12

## MICH WILEY POST 1226Z

MICH 1226Z February 08 2012 #1706219

BC 7022 RAVEN 7965 DMF DWF AMF CAF NHF  
**RC WILEY POST 9304B EXAR**  
 WK WINNIE 7305

SASKALTA WINSTON 157F  
**SASKALTA DUCHESS 100L**  
 SASKALTA DUCHESS 681F

B C MARATHON 7022  
 O C C BLACKBIRD 796F  
 KRUGERRANDS MONEYLINE  
 WK WINNIE 5460  
 ANGUS ACRES WINSTON 249B  
 ELBA OLE SASKALTA 157B  
 JOHNSTON 2100 TRADITION 485Y  
 OLE SASKALTA HEROINE 330C

PERF	BW	205D	365D	EPDs	BW	WW	YW	Milk	TM
	88	846			3.6	33	58	9	26

Another very attractive Wiley Post calf with tremendous rib and shape. He is a very smooth made bull with loads of hair and an excellent disposition. His dam is a moderate very tidy uddered cow that has done a great job for us each year.



MICHELSON

14

## MICH WILEY POST 1258Z

MICH 1258Z February 07 2012 #1702199

BC 7022 RAVEN 7965 DMF DWF AMF CAF NHF  
**RC WILEY POST 9304B EXAR**  
 WK WINNIE 7305

SASKALTA RITO 304H  
**F V TIPTOP RITO 148K**  
 SASKALTA TIPTOP 664F

B C MARATHON 7022  
 O C C BLACKBIRD 796F  
 KRUGERRANDS MONEYLINE  
 WK WINNIE 5460  
 SASKALTA RITO 176F  
 OLE SASKALTA BLACKCAP 304C  
 BARDOLINE OLE SASKALTA 118B  
 OLE SASKALTA TIPTOP 315C

PERF	BW	205D	365D	EPDs	BW	WW	YW	Milk	TM
	84	892			1.9	37	59	9	28

Another RC Wiley Post bull packed with red meat and muscle with that Wiley Post look. 1258Z is a big topped, big hipped bull with tremendous depth of body and capacity. He has a super soft look about him with a tremendous hair coat and a gentle disposition.



# Pursuit of EXCELLENCE

MICHELSON

**15**

## SC MICH PAYOFF 225Z

KSER 225Z February 04 2012 #1713181

S A V PAYROLL 5281 AMF NHF  
**PVF ALL PAYDAY 729 AMF CAF NHF**  
P V F BLACKBIRD 201

EXAR PIT BOSS 409 AMF CAF  
**EXAR HIGHROSE 84026**  
CURTIS HIGHROSE 807

S A V 8180 TRAVELER 004  
S A V BESSIE HEIRESS 1184 CAC  
P V F NEW HORIZON 001 AMF NHF  
P V F BLACKBIRD 020  
EXAR SUDDEN IMPACT 1537  
WK WINNIE 7305  
R R FERDINAND 758D AMF CAF NHF  
WARDS HIGHROSE 033

PERF	BW	205D	365D	EPDs	BW	WW	YW	Milk	TM
	81				3.3	54	93	27	54

Payoff is a very long bodied, stout, big hipped son of PVF ALL Payday. He is very smooth made and attractive with loads of performance and power. His dam is a beautiful daughter of EXAR Pit Boss 409 who was named champion Angus and supreme champion overall breeds at the Heartland First Lady Classic at Canadian Western Agribition as a yearling. She has turned into a stout, beautiful uddered female in our program. Payoff excels in phenotype, performance and has an excellent set of numbers to back him up.

MICHELSON

**16**

## MICH SPARTAN 1208Z

MICH 1208Z February 20 2012

EXAR LUTTON 1831  
**EXAR SPARTAN 6225**  
WK WINNIE 7305

SASKALTA WINSTON 157F  
**SASKALTA HEROINE 248M**  
SASKALTA HEROINE 164J

NORTON IMPROVEMENT 4480 GF  
EXAR SARAS DREAM 9809  
KRUGERRANDS MONEYLINE  
WK WINNIE 5460  
ANGUS ACRES WINSTON 249B  
ELBA OLE SASKALTA 157B  
SASKALTA RITO 176F  
HEROINE OLE SASKALTA 164B

PERF	BW	205D	365D	EPDs	BW	WW	YW	Milk	TM
	83				-2.5	35	61	14	

This will be one of the only EXAR Spartan 6225 sons to sell in Canada. He is a nice hipped, beautiful fronted, free moving, big bodied bull with loads of performance and phenotype. His dam is beautiful uddered cow that always has brought home a big solid calf each fall. A real different pedigree with loads of potential here. Recommended for heifers.



**16**



# 2013



BLAIR'S

17

## RED BLAIRS CASH 29Z

BBC 29Z March 04 2012 #1703404

RED PIE ATLANTIC 2204 OSF MAF  
**RED CORNER CREEK CASH 2R OSF MAF**  
 RED NORTHLINE PRINCESS 59L

RED PIPESTONE BOND 165B  
**RED PIPESTONE GOLDEN 72K OSF**  
 RED PIPESTONE GOLDEN 37E

RED COLE MISTER "E" 9J  
 RED PIE BOTEET 899 OSF  
 RED NORTHLINE KING 305J  
 RED KWS ROCKY PRINCESS 59J  
 RED PIPESTONE YUKON 250U  
 RED PIPESTONE POISE 165U  
 RED PIPESTONE CASSIUS 8C  
 RED MEADOW LAKE GOLDIE 7W

PERF	BW	205D	365D	EPDs	BW	WW	YW	Milk	TM
	96	576			0.4	56	72	12	40

BBC 29Z was a member of our Denver show string and had lots of friends. He is off the 72K donor cow we were fortunate to purchase from the Lucky C dispersal. The 72K dam is now deceased so this mating just got real cool. The fact the sire of this bull is Red Corner Creek Cash 2R makes him extra special. Progeny from 72K have sold to Michael Kereluik, Wade & Jolene Watson, Leonard Wardle, Optimal Bovines Inc., TJ Farms, Saik Management, and Hall's Cattle Company. Don't miss out here.



Dam of Lot 17 - Red Pipestone Golden 72K



# Pursuit of EXCELLENCE

BLAIR'S

**18**

## RED BLAIRS CASH 207Z

BBC 207Z January 02 2012 #1703656

PERF	BW	205D	365D	EPDs	BW	WW	YW	Milk	TM
	97	704			0.1	60	73	19	

BLAIR'S

**19**

## RED BLAIRS CASH 208Z

BBC 208Z January 02 2012 #1703655

PERF	BW	205D	365D	EPDs	BW	WW	YW	Milk	TM
	92	611			0.1	60	73	19	

RED PIE ATLANTIC 2204 OSF MAF  
**RED CORNER CREEK CASH 2R OSF MAF**  
RED NORTHLINE PRINCESS 59L

RED BJR JR 107 OSF MAF  
**RED TOWAW MONIQUE 2K**  
RED TWIN D MONIQUE 811H

RED COLE MISTER "E" 9J  
RED PIE BOTEET 899 OSF  
RED NORTHLINE KING 305J  
RED KWS ROCKY PRINCESS 59J  
LMB JOHNY REB 091  
RED BJR TIDY BEE 677-6186  
RED RIBLONG SAWYER 22E  
RED L4 MONIQUE 522D



*Dam of Lots 18 & 19 - Red Towaw Monique 2K*

Monique 2K is the dam to the now deceased Red Diamond T Hips Stout. This flush was very interesting because we got 7 live calves out of 7 possible embryo's. The full sib heifer to these bulls sold to Rust Mountain View Ranch for \$10,500. If you want extreme performance and rare genetics from the popular Red Corner Creek Cash 2R then these full sibs are a once in a lifetime opportunity. Progeny off Monique 2K have sold to Lee Brown, Ron Gardner, Chatburn Ranch, and Rust Mountain View Ranch.

BLAIR'S

**20**

## RED BLAIRS CASH 18Z

BBC 18Z February 27 2012 #1703408

RED PIE ATLANTIC 2204 OSF MAF  
**RED CORNER CREEK CASH 2R OSF MAF**  
RED NORTHLINE PRINCESS 59L

RED HEARTLAND KNIGHT CHARM 11L  
**RED TER-RON JASMIN 48R OSF**  
RED DEVOLANE PREMIER 48C

RED COLE MISTER "E" 9J  
RED PIE BOTEET 899 OSF  
RED NORTHLINE KING 305J  
RED KWS ROCKY PRINCESS 59J  
RED YY RED KNIGHT 640F OSF  
RED CARRUTHERS TRIBECCA 7F  
RED BIEBER DSIGN 1325-082  
RED BRA ASTER PREMIER

PERF	BW	205D	365D	EPDs	BW	WW	YW	Milk	TM
	98	838			0.7	61	82	12	42

Power, power, power is how you would define the Jasmine 48R donor. We own 48R together with Wildcat Creek in Kansas and she is a critical part of our embryo program. Another unique pedigree off Red Corner Creek Cash 2R. Cash semen is in very limited supply and is off the market until the fall of 2013. Progeny from Jasmine 48R have been sold to Rob Judd, Wildcat Creek(Kansas), Damar Farms(Wisconsin), and Kenray Ranch.



*Dam of Lot 20 - Red Ter-Ron Jasmin 48R*



# 2013



BLAIR'S  
**21**

## RED BLAIRS KARGO 20Z

BBC 20Z February 27 2012 #1695434

RED RINGSTEAD KARGO 107M  
**RED RINGSTEAD KARGO 215U OSF**  
RED RINGSTEAD MS EQUAL 589P

RED JCC WARRIOR 5K  
**RED JCC KAPI 109R**  
RED TOP LINE KAPI 26L

RED COMPASS KARGO 83K  
RED GET-A-LONG MRS. YOUNG 095  
RED SSS YUKON 440K  
RED SSS MISS EQUAL 495G  
RED JCC COWBOY 74G  
RED JCC MAHOGANY 7F  
RED VARA PRIME RIB 101J  
RED TOPLINE KAPI 51J

PERF	BW	205D	365D	EPDs	BW	WW	YW	Milk	TM	CE
	83	692			-1.1	46	70	17		

20Z is a true heifer bull with a cool pedigree. Kargo has emerged as a highly maternal, easy calving sire that is raising the right type for both commercial and purebred breeders. Three Kargo heifers anchored our Denver show string and gathered quite a crowd of friends. Kargo is our newest addition to our semen line up and is currently at Alta Genetics. Kapi 109R has been a key donor and progeny have been sold to W2 Farms, Dwayne Emery and Carmen Morris.



BLAIR'S  
**22**

## RED BLAIRS REAL DEAL 30Z

BBC 30Z March 04 2012 #1700427

RED TER-RON RELOAD 703T  
**RED TER-RON REALDEAL 01W AMF OSF MAF**  
RED K ADAMS SAVANAH 11S

RED TER-RON MAMBO 28K  
**RED JCC CHETA 50P OSF**  
RED JCC CHARO 19K

RED TER-RON FULLY LOADED 540R  
RED TER-RON SAMARIA 103N  
DMM FLEX 24E  
RED BRYLOR BRANDY 11C  
RED YY RED KNIGHT 640F OSF  
RED ALDER ABG STAR DUST 8G  
RED SSS BOMBER 907G  
RED JCC CHETA 2F

PERF	BW	205D	365D	EPDs	BW	WW	YW	Milk	TM	CE
	88	808			3.6	68	100	6	40	

30Z is a powerful breeding piece off the proven Red Ter-Ron Real Deal and the incredible Cheta 50P. Cheta was recently sold to Ben Fraser in Australia and will enter into their donor program. Cheta 50P was also the dam to the pick of our 2010 heifer calf crop that sold to J6 in Nebraska for \$13,500. Progeny of 50P have sold to Ty Wheeler, Jenna Longshore, J-6 Inc., P.F.R.A., Larry and Laurie Nielson, Nolan Blair and Ann-Marie Collins.



BLAIR'S  
**23**

## RED BLAIRS DAYTONA 230Z

BBC 230Z January 29 2012 #1704218

RED FINE LINE MULBERRY 26P AMF OSF MAF  
**RED BLAIR'S DAYTONA 116U**  
RED JCC LASS 41N

RED JCC WARRIOR 5K  
**RED JCC KAPI 109R**  
RED TOP LINE KAPI 26L

RED COMPASS MULBERRY 449M  
RED DUS FAYETTE 8G  
RED TER-RON MAMBO 28K  
RED JCC LASS 63K  
RED JCC COWBOY 74G  
RED JCC MAHOGANY 7F  
RED VARA PRIME RIB 101J  
RED TOPLINE KAPI 51J

PERF	BW	205D	365D	EPDs	BW	WW	YW	Milk	TM	CE
	86	601			0.6	54	88	18	44	

230Z is a maternal sib to Lot #21 and is off Red Blair's Daytona. Check out the balanced EPD's on this Daytona son.

Dam of Lots 21 & 23 - Red JCC Kapi 109R



# Pursuit of EXCELLENCE

BLAIR'S  
**24**

## RED BLAIRS SIN CITY 46Y

BBC 46Y April 18 2011 #1637451

RED NORTHLINE ATLANTIC CITY  
**RED WHEEL SIN CITY 43T OSF**  
RED WHEEL PRIDE 16M

RED NORTHLINE EQUALIZER 189N  
**RED SOUTHLANS MABEL 36S**  
RED SOUTHLAND MABEL 61P

RED PIE ATLANTIC 2204 OSF MAF  
RED NORTHLINE QUEEN 240H  
RED CON AIR 55G  
RED PTTV PRIDE 3'97 OSF  
DURLOWE JESTER 34L  
NORTHLINE LADY 189K  
RED NORTHLINE ROB ROY 122K OSF MAF  
RED LITTLE DE MABEL 121H

PERF	BW	205D	365D	EPDs	BW	WW	YW	Milk	TM
	93	696			3.3	52	94	19	45

46Y is off the powerful sire Sin City that we purchased from Wheeler's Stock Farm and has become a cornerstone in our spring calving program. The Mabel 36S dam was one of our top picks from the Southland Red Angus dispersal. Progeny off 36S have sold to Maguire Blair and Larry and Laurie Nielson.



BLAIR'S  
**25**

## RED BLAIRS SIN CITY 51Y

BBC 51Y April 20 2011 #1637455

RED NORTHLINE ATLANTIC CITY  
**RED WHEEL SIN CITY 43T OSF**  
RED WHEEL PRIDE 16M

RED TER-RON MAMBO 28K  
**RED JCGL DYNA 65S**  
RED SIX MILE DYNA 847M

RED PIE ATLANTIC 2204 OSF MAF  
RED NORTHLINE QUEEN 240H  
RED CON AIR 55G  
RED PTTV PRIDE 3'97 OSF  
RED YY RED KNIGHT 640F OSF  
RED ALDER ABG STAR DUST 8G  
RED KINCHEN SAGEBRUSH 487  
RED SIX MILE DYNA 409J

PERF	BW	205D	365D	EPDs	BW	WW	YW	Milk	TM
	87	834			3.3	71	126	19	55

51Y is the sire for those that want to maintain ownership and feed out their feeder steers. 51Y is in the top 1% of the breed for WW, YW, TM and Carcass weight. This sire shouts out feedlot profits. Get him bought, that's all there is to it.



BLAIR'S  
**26**

## RED BLAIRS SIN CITY 63Y

BBC 63Y April 25 2011 #1637466

RED NORTHLINE ATLANTIC CITY  
**RED WHEEL SIN CITY 43T OSF**  
RED WHEEL PRIDE 16M

RED SSS Bomber 907G  
**RED JCC YONSOTTU 78L**  
RED CUTARM YONSOTTU 247B

RED PIE ATLANTIC 2204 OSF MAF  
RED NORTHLINE QUEEN 240H  
RED CON AIR 55G  
RED PTTV PRIDE 3'97 OSF  
RED SSS BOOMER 803B  
RED CROWFOOT KATE 435D  
RED DEKAP RED DALLES 345  
RED CUTARM YONSOTTU 718Y

PERF	BW	205D	365D	EPDs	BW	WW	YW	Milk	TM
	87	681			1.5	43	78	24	45

63Y is another powerful Sin City son. Sin City is a sire with maybe the most impressive set of EPD's of any sire in the breed. Red Wheel Sin City 43T is top 1% for YW, Milk, TM and Carcass weight and is top 10% for Ribeye and top 20% for WW. These kind of EPD's are simply impossible to find. The dam 78L is a full sister to our great donor Lass 63K who is the dam to the 2005 National Champion Female.





# 2013



Dam of Lot 27 - Red Riverdale Dynamint 340L



BLAIR'S  
**27**

## RED BLAIRS SIN CITY 77Y

BBC 77Y April 27 2011 #1637475

RED NORTHLINE ATLANTIC CITY  
**RED WHEEL SIN CITY 43T OSF**  
RED WHEEL PRIDE 16M

RED SSS BOMBER 789G  
**RED RIVERDALE DYNAMINT 340L**  
RED RIVERDALE DYNAMINT 113G

RED PIE ATLANTIC 2204 OSF MAF  
RED NORTHLINE QUEEN 240H  
RED CON AIR 55G  
RED PTTV PRIDE 3'97 OSF  
RED SSS BOOMER 803B  
RED DEER RANGE SUE 163A  
RED SSS MONU 4 252D  
RED RIVERDALE DYNAMINT 230Z

PERF	BW	205D	365D	EPDs	BW	WW	YW	Milk	TM
	83	841			1.7	57	92	24	52

77Y is truly unique in that he combines Sin City with a great donor Dynamint 340L that was our pick from the Riverdale Ranch dispersal. If you are looking for that herdbull that will raise those dark cherry red calves with extreme phenotype and performance and delivers that in a genetic package with balanced EPD's then get in your truck. Progeny off 340L have sold to Double Bar D Farms, Marvin & Deb Zorn, Wood Valley Ranch, Kevin Taylor, Brylor Ranch and Dale McKay.

BLAIR'S  
**28**

## RED BLAIRS SIN CITY 108Y

BBC 108Y May 8 2011 #1637503

RED NORTHLINE ATLANTIC CITY  
**RED WHEEL SIN CITY 43T OSF**  
RED WHEEL PRIDE 16M

RED SOO LINE HERCULES 12M  
**RED RIVERDALE LASIE 148R**  
RED RIVERDALE LASIE 363L

RED PIE ATLANTIC 2204 OSF MAF  
RED NORTHLINE QUEEN 240H  
RED CON AIR 55G  
RED PTTV PRIDE 3'97 OSF  
RED SIX MILE HERCULES 19G  
RED LAZY MC CHRISTY 61J  
RED SSS BOMBER 789G  
RED RIVERDALE LASIE 29E

PERF	BW	205D	365D	EPDs	BW	WW	YW	Milk	TM
	70	683			0.3	47	80	23	47

Sin City 108Y might be one of the most interesting bulls in the sale. The 148R dam was one of the top cows out of the Riverdale dispersal. If you want power and caving ease all in one package then 108Y will be a perfect for your program. We have daughters and granddaughters working in our program. Check out the EPD profile.

BLAIR'S  
**29**

## RED BNC LASS 513Y

BNC 513Y June 10 2011 #1637358

RED NORTHLINE ATLANTIC CITY  
**RED WHEEL SIN CITY 43T OSF**  
RED WHEEL PRIDE 16M

RED SSS BOMBER 907G  
**RED JCC LASS 63K**  
RED CUTARM YONSOTTU 247B

RED PIE ATLANTIC 2204 OSF MAF  
RED NORTHLINE QUEEN 240H  
RED CON AIR 55G  
RED PTTV PRIDE 3'97 OSF  
RED SSS BOOMER 803B  
RED CROWFOOT KATE 435D  
RED DEKAP RED DALLES 345  
RED CUTARM YONSOTTU 718Y

PERF	BW	205D	365D	EPDs	BW	WW	YW	Milk	TM
	75	820			1.9	50	88	23	48

513Y is special because he is out of the Lass 63K donor that was the first Red Angus female we ever bought. No cow has done more for us and she will stay in our donor program as long as possible. 513Y is long spined and super soggy. Progeny off Lass 63K have sold to Hagerty Livestock, Hook N Ladder, Adam Sibbald, Wilson Rae, Brylor Ranch, Shantz Farms, Mann Ranch, Gormlea Farms, Wildcat Creek Ranch, Kenray Ranch, P.F.R.A., Rocking R Angus Ranch, Lyle Tytlandsvik and Ed Johnston. This is an impressive list. Mark your catalog. Owned with Nexera Land & Cattle.



# Pursuit of EXCELLENCE



BLAIR'S

**30**

## RED BLAIRS SIN CITY 95Y

BBC 95Y May 03 2011 #1637484

RED NORTHLINE ATLANTIC CITY  
**RED WHEEL SIN CITY 43T OSF**  
RED WHEEL PRIDE 16M

RED JCC FREEDOM 82L  
**RED JCC ELORA 71P**  
RED CUTARM ELORA 824Z

RED PIE ATLANTIC 2204 OSF MAF  
RED NORTHLINE QUEEN 240H  
RED CON AIR 55G  
RED PTTV PRIDE 3'97 OSF  
RED SSS BOMBER 907G  
RED JCC YONSOTTU 38F  
RED BULL POWER SS  
RED CUTARM FLORA 408R

PERF	BW	205D	365D	EPDs	BW	WW	YW	Milk	TM
	95	802			2.3	61	104	21	51

95Y is another cherry red genetic package both top and bottom and is out of the Elora 71P cow we sold in our 2011 Genetics in Motion sale to Brad Chapell. I think sale day 95Y will catch your eye.



Dam of Lot 30 - Red JCC Elora 71P



# 2013



## 31

### RED BLAIRS CASH 902Y

BBC 902Y May 06 2011 #1648945

RED PIE ATLANTIC 2204 OSF MAF  
**RED CORNER CREEK CASH 2R OSF MAF**  
 RED NORTHLINE PRINCESS 59L

RED YY RED KNIGHT 640F OSF  
**RED BAR-E-L MARCIE 50N**  
 RED RIBLONG SHAWNEE 37E

RED COLE MISTER "E" 9J  
 RED PIE BOTEET 899 OSF  
 RED NORTHLINE KING 305J  
 RED KWS ROCKY PRINCESS 59J  
 RED YY 23L TOPPER 408D  
 RED TOP GOLDIE 40U  
 RED O H SAWYER 3B  
 RED O H SHAWNEE 0204B

PERF	BW	205D	365D	EPDs	BW	WW	YW	Milk	TM	CE
	78	735			1.2	67	87	13	46	

902Y is a off the great Bar E-L donor Marcie 50N that is now owned by Wildcat Creek Ranch in Kansas. Marcie 50N is the dam to the great Red Bar E-L Ribeye 103R that has 386 registered progeny. We were fortunate to buy these embryo's and know that 902Y will do great things. This mating may never be created again and has a great set of #'s to go with his cool phenotype.



Sire of Lots 17, 18, 19, 20, 31 & 32 - Red Corner Creek Cash 2R

## BLAIR'S

## 32

### RED BLAIRS CASH 205Y

BBC 205Y FEBRUARY 1 2011

RED PIE ATLANTIC 2204 OSF MAF  
**RED CORNER CREEK CASH 2R OSF MAF**  
 RED NORTHLINE PRINCESS 59L

RED TER-RON REBEL 102N  
**RED SOO LINE REBECCA 317S**  
 RED SOO MS REBECCA 317S

RED COLE MISTER "E" 9J  
 RED PIE BOTEET 899 OSF  
 RED NORTHLINE KING 305J  
 RED KWS ROCKY PRINCESS 59J  
 RED LAZY MC DIVIDE 8J  
 RED TER-RON MISSMAE 102K  
 RED DWAJO GLADIATOR 32L  
 RED CRESCENT CREEK REBECCA 82L

PERF	BW	205D	365D	EPDs	BW	WW	YW	Milk	TM
	92	575			-1.3	55	74	17	45

The Rebecca 143S dam is some kinda power cow. The Rebel cows are moderate, blood red and soggy made. A maternal brother sold to Silver Spur in Wyoming.



# Pursuit of EXCELLENCE



BLAIR'S  
**33**

## RED BLAIRS HAMLEY 81Y

BBC 81Y April 27 2011 #1644860

PERF	BW	205D	365D	EPDs	BW	WW	YW	Milk	TM	5 Star CE
	87	599			-2.0	37	59	24	42	

BLAIR'S  
**34**

## RED BLAIRS HAMLEY 87Y

BBC 87Y April 29 2011 #1644862

PERF	BW	205D	365D	EPDs	BW	WW	YW	Milk	TM	5 Star CE
	77	637			-2.0	37	59	24	42	

These full sibs represent a unique mating that is no longer available in Canada. Hamley semen in Canada is off the market and 409S now resides at Wildcat Creek in Kansas. If you are looking for extremely cool phenotype and incredible muscle shape then mark these bulls. These full sibs are calving ease deluxe and will raise calves with that make you proud every single day.

RED PIE BILLINGS 487 OSF

RED NBAR HAMLEY S913 OSF

RED NBAR KELLY 913

RED DWAJO GLADIATOR 32L

RED SOO LINE COUNTRESS 6409 OSF

RED JCC COUNTRESS 14G

RED PERKS ADVANCE 121R OSF

RED PIE RAMBO'S PRIDE 0289

RED NBAR DANCE 531

RED NBAR KELLY 700

RED BLUE SPRUCE ZOOK 50H

RED DWAJO SUPERIOR 4H OSF

RED TOWARDS 2000 14D

RED JCC COUNTRESS 1E



Dam of Lots 33 & 34 - Red Soo Line Countress 6409





# 2013



Maternal sister to Lot 35 - Red Soo Line Annie

Internet Bidding Available

**D | L | M | S**

*www.dlms.ca*



BLAIR'S  
**35**

## RED BLAIRS HAMLEY 923Y

BBC 923Y May 15 2011 #1648656

RED PIE BILLINGS 487 OSF  
**RED NBAR HAMLEY S913 OSF**  
RED NBAR KELLY 913

RED FORSTER CHIEF 7182ET  
**RED CRESCENT CREEK ANNIE 7L OSF MAF**  
RED MEM ICECAP ANNIE 22Z

RED PERKS ADVANCE 121R OSF  
RED PIE RAMBO'S PRIDE 0289  
RED NBAR DANCE 531  
RED NBAR KELLY 700  
RED PBC D0202 6M H0904 OSF MAF  
RED MISS FORSTER CPRTOP 591 OSF  
RED MEM ICEBERG 4W  
RED MEM CHINNA 26S

PERF	BW	205D	365D	EPDs	BW	WW	YW	Milk	TM
	89	716			0.0	41	58	21	42

This lot is super exciting. 923Y has that cool phenotype from Hamley BUT look at the dam. 7L is the dam to the \$32,000 half interest donor that SooLine sold to Rust Mountain View Ranch in Red Roundup. 923Y was a standout all summer as a calf and we are confident his future is just getting started.

BLAIR'S  
**36**

## WCAT 196Y

WCAT 196Y MARCH 24 2011 #1446232

LJC LANCER 806  
**LJC MISSION STATEMENT 538W**  
LJC TAWNYA 538

BADLANDSPFFRBEEFMAKER638  
**WW-3J BLOCKANA W71**  
BLOCKANA GAL P71

LJC LANCER 806  
LJC HANNAH 106  
TR JULIAN LT142  
LJC CASEY 308  
BADLANDS ALL BEEF 114J  
LCC MAJOR LEAGUE A205M  
BLOCKANA GAL 1132

PERF	BW	205D	365D	EPDs	BW	WW	YW	Milk	TM
	60	680			-4.5	48	74	23	47

Here is a bull to add that look that your commercial calves need to bring top dollars. These good two year olds breed more cows and will always outlast a yearling.

BLAIR'S  
**37**

## RED BLAIRS KARGO 120Y

BBC 120Y May 25 2011 #1637519

RED RINGSTEAD KARGO 107M  
**RED RINGSTEAD KARGO 215U OSF**  
RED RINGSTEAD MS EQUAL 589P

RED TER-RON FULLY LOADED 540R  
**RED BLAIR'S SEREBL 111U**  
RED SIX MILE SEREBL 175H OSF

RED COMPASS KARGO 83K  
RED GET-A-LONG MRS. YOUNG 095  
RED SSS YUKON 440K  
RED SSS MISS EQUAL 495G  
RED HEARTLAND KNIGHT CHARM 11L  
RED TER-RON GOLDIE 240L  
RED BRA RISER 65Y  
RED SYMBRAE SEREBL 48B

PERF	BW	205D	365D	EPDs	BW	WW	YW	Milk	TM
	78	760			0.1	49	63	17	42

120Y is off Kargo who is our sure fire heifer bull. Look into the pedigree and you will see the Serebl 175H donor who was the Canadian Western Agribition champion female for Six Mile Ranch. Check him out.



# Pursuit of EXCELLENCE



BLAIR'S

**38**

## RED BLAIRS KARGO 126Y

BBC 126Y May 28 2011 #1637523

RED RINGSTEAD KARGO 107M  
**RED RINGSTEAD KARGO 215U OSF**  
RED RINGSTEAD MS EQUAL 589P

RED NORTHLINE CRUSH 59R  
**RED SOUTHLAND FAVORITE 88T**  
RED SOUTHLAND FAVORITE 152P

RED COMPASS KARGO 83K  
RED GET-A-LONG MRS. YOUNG 095  
RED SSS YUKON 440K  
RED SSS MISS EQUAL 495G  
RED PIE ATLANTIC 2204 OSF MAF  
RED NORTHLINE PRINCESS 59L  
RED HCF RED ROCK 212  
RED LITTLE DE FAVORITE 110H

PERF	BW	205D	365D	EPDs	BW	WW	YW	Milk	TM	
	79	737			0.3	58	90	16	45	

A Kargo that will catch your attention as soon as you walk in the pen. He is easy on the eyes but will be easier on your heifers. The dam 88T was our pick of the heifer calves at the Southland Red Angus dispersal. I love this mating.

BLAIR'S

**39**

## RED BLAIRS DAWSON 112Y

BBC 112Y May 10 2011 #1637507

RED RINGSTEAD DAWSON 209R  
**RINGSTEAD DAWSON 717T**  
GET-A-LONG ELBA 705

RED K-C MR "E" 92N  
**RED CINDER FREYJA 29U**  
RED ROYAL FREYJA 29M OSF

RED SSS YUKON 440K  
RED HOWE MS MINOLA DDH 98D  
PARAMONT AMBUSH 2172 AMF CAF NHF  
GET-A-LONG ELBA 513  
RED K-C "MR E" 5L  
RED ROBAN SWEET LIPS 3E  
RED PIE LO CANYON 912  
RED ROYAL TOGNO FREYJA 156B

PERF	BW	205D	365D	EPDs	BW	WW	YW	Milk	TM	
	74	689			-0.3	43	65	22	43	

112Y is truly unique. Completely outcross and off a very deep ribbed female. The sire black and the dam was purchased from Cinder Angus at Red Roundup. Dawson 717T is no longer with us so this is the end of the Dawson's.

# 2013



BLAIR'S

**40**

## BLAIRS ATTRACTION 308Y

BBC 308Y FEBRUARY 16 2011

DUFF NEW ATTRACTION 6110  
NLC COMING ATTRACTION 2W  
DOUBLE AA BELLA 31'05

RED NBT EMPEROR 318S  
RED BLAIR'S REGAL LADY 89W  
RED MOOSE CREEK REGAL LADY 56J

O C C GENESIS 872G  
O C C DIXIE ERICA 814G  
DOUBLE AA BLACKMAN 292'01  
DOUBLE AA BELLA 31'05  
RED UBAR SEQUOIA 202  
RED STEWART EMPRESS 57L  
RED MOOSE CREEK RENEGADE 122F  
RED HENDERSON LEADING LADY 22A

PERF	BW	205D	365D	EPDs	BW	WW	YW	Milk	TM
	87	802			3.2	44	68	14	36

If you have been scouring the land for that outcross sire that can be added to your Red Angus program to make outcross red genetics then stop the hunt. If you are a commercial breeder looking for that bull that will allow you to keep every female to moderate your herd with performance in mind then stop the hunt. 308Y will be the deepest soggiest sire to sell this spring. We would love to work with the new owner to use 308Y in our program.  
*We are retaining 25% semen interest.*

BLAIR'S

**41**

## BLAIR'S DAWSON 337Y

BBC 337Y April 23 2011 #1637459

RED RINGSTEAD DAWSON 209R  
RINGSTEAD DAWSON 717T  
GET-A-LONG ELBA 705

THREE TREES PRIME CUT 0145 AMF CAF NHF  
SOO LINE TIPTOP 7114  
TLA TIPTOP 26R

RED SSS YUKON 440K  
RED HOWE MS MINOLA DDH 98D  
PARAMONT AMBUSH 2172 AMF CAF NHF  
GET-A-LONG ELBA 513  
SUMMITCREST PRIME CUT 1G42  
BLACK TOOTH LADY B 380  
RR 7407 RAINMAKER 2154  
TLA TIPTOP 13M

PERF	BW	205D	365D	EPDs	BW	WW	YW	Milk	TM
	83	800			2.6	47	81	19	43

337Y in another Dawson outcross bull that is off the Tiptop 114T female we bought from SooLine Cattle as a heifer calf. Her first bull calf sold to Evergreen Cattle Co.



# Pursuit of EXCELLENCE

BLAIR'S

**42**

## BNC DAWSON 340Y

BNC 340Y April 25 2011 #1637356

RED RINGSTEAD DAWSON 209R  
**RINGSTEAD DAWSON 717T**  
GET-A-LONG ELBA 705

RED TER-RON MAMBO 28K  
**RED BLAIR'S KURUBA 161T**  
RED JCC KURUBA 16K

RED SSS YUKON 440K  
RED HOWE MS MINOLA DDH 98D  
PARAMONT AMBUSH 2172 AMF CAF NHF  
GET-A-LONG ELBA 513  
RED YY RED KNIGHT 640F OSF  
RED ALDER ABG STAR DUST 8G  
RED SSS BOMBER 907G  
RED LUMONT KURUBA REDMAN 200W

PERF	BW	205D	365D	EPDs	BW	WW	YW	Milk	TM	5 Star CE
	68	596			0.9	50	78	20	45	

340Y comes from the powerful group of outcross Dawson sons. Dawson is a black sire that we were fortunate to buy at Ringstead Ranch and has left us a great group of calves. The 161T progeny have sold to Dwayne Juve and Brian Cooper. A full sister to 161T sold to Glen Gabel and maternal sisters sold to Amy Raines and Stacey Simpson. Look at the calving ease EPD and actual BW on 340Y and book him a date with your heifers. Owned with Nexera Land & Cattle Co.



BLAIR'S

**43**

## BLAIRS DAWSON 343Y

BBC 343Y April 26 2011 #1637468

RED RINGSTEAD DAWSON 209R  
**RINGSTEAD DAWSON 717T**  
GET-A-LONG ELBA 705

RED UBAR SEQUOIA 202  
**RED BRYLOR G F SUGRLAND 174S**  
RED BRYLOR BONITA 58J

RED SSS YUKON 440K  
RED HOWE MS MINOLA DDH 98D  
PARAMONT AMBUSH 2172 AMF CAF NHF  
GET-A-LONG ELBA 513  
RED BJR HIGH CAPACITY 008 OSF MAF  
RED FORSTER COPPRQUEEN 7168 OSF  
RED TKP BODACIOUS 693 OSF  
RED BRYLOR CHEROK 40X

PERF	BW	205D	365D	EPDs	BW	WW	YW	Milk	TM
	89	754			1.5	55	85	21	49

Dawson 343Y is the last of the Dawson's to ever sell. The 174S dam is a very special cow and has one daughter working in our herd and has had progeny sell to Lauren Blair and TJ Farms.



BLAIR'S

**44**

## BLAIRS PRESTIGE 937Y

BBC 937Y May 12 2011 #1648956

H S A F BANDO 1961 AMF CAF NHF  
**CJ PRESTIGE 25T AMF CAF NHF**  
C J BLACKBIRD 11P CAC

RED BAKERS CENTURY  
**RED BAKERS FAITH 8L OSF**  
RED BROX FAITH 17C

S A F 598 BANDO 5175 AMF CAC  
J K S MISS CHEYENNE 196  
TC FREEDOM 104 AMF CAF NHF  
H F BLACKBIRD 61H  
RED TOWAW MATRIX 19D  
RED MEM MINOLA 71E  
RED GET-A-LONG APACHE 135  
RED BRYLOR FAITH 33Y

PERF	BW	205D	365D	EPDs	BW	WW	YW	Milk	TM	5 Star CE
	74	760			1.0	51	82	15	41	

937Y comes from the most popular donor in our program after her Reload bred heifer sold for \$14,500 in our Genetics in Motion 2012 sale to Dale MacKay and then went on to be Reserve Champion Female at Edmonton and CWA and then followed that up as Reserve in her division in Denver. Progeny off the 8L dam have sold to S Lier & Sons, Les W K Saunders, David Abrahamson, Saik Management and Dale McKay. We also have 6 daughters working in our herd.



Sire of Lot 44 - CJ Prestige 25T

# 2013



BLAIR'S  
**45**

## BLAIRS LIMITLESS 303Y

BBC 303Y February 06 2011 #1637412

RED U-2 BIG LEAGUE 544R  
**RED TER-RON TAHOE 141T**  
RED TER-RON MISS IMPACT 141P

CUDLOBE YELLOWSTONE 80M  
**SOO LINE MISS BIRDIE 197P**  
RED LPC BIRDIE JULIA 11H

RED LCC MAJOR LEAGUE A502M OSF MAF  
RED U-2 ANEXA 09E  
RED TER-RON LOPEZ 811L  
RED TER-RON MISS IMPACT 41K  
VERMILION YELLOWSTONE AMF CAF NHF  
STEVENSON ENCHANTRESS 425F  
RED MESSMER JULIAN 9486  
RED LPC BIRDIE 3Y

PERF	BW	205D	365D	EPDs	BW	WW	YW	Milk	TM	CE
	79	715			0.5	57	84	16	44	CE

Balanced EPD's and calving ease all in an outcross pedigree. Progeny of the dam 197P have sold to Breault Ranching Ltd. and Wildcat Creek Ranch.



BLAIR'S  
**46**

## BLAIRS DAYTONA 329Y

BBC 329Y MARCH 31 2011

RED FINE LINE MULBERRY 26P  
**RED BLAIRS DAYTONA 116U**  
RED JCC LASS 41N

SAV NET WORTH 4200  
**JS ROSETTA 841**  
SAV ROSETTA 4244

RED COMPASS MULBERRY 449M  
RED DUS FAYETTE 8G  
RED TER-RON MAMBO 28K  
RED JCC LASS 63K  
SAV 8180 TRAVELER 004  
SAV MAY 2410  
CA FUTURE DIRECTION 5321  
SAV ROSETTA 8262

PERF	BW	205D	365D	EPDs	BW	WW	YW	Milk	TM	CE
	79	676			2.6	60	108	26	56	CE

Here is a real cool hipped bull of Red Blair's Daytona and a fantastic cow we purchased from Jason George. Check out the crazy good EPD's. Daytona 329Y has always been that bull that catches your attention in the pasture and on sale day he will catch yours.



BLAIR'S  
**47**

## BLAIRS PERFECTION 333Y

BBC 333Y April 16 2011 #1637449

RED STEWART PATHFINDER 5L  
**RED U-2 PERFECTION 8067U**  
RED U-2 DUCHESS 334N

STEVENSON BRUNO 561G CAF NHF  
**BWB MISS DELEGATE 27P**  
BWB MISS DELEGATE 33'98

RED FCC RAMBO 502 OSF  
RED JEWEL MISS PATHY 62A  
RED HOWE MR MATRIX 7L  
RED U-2 DUCHESS 162L  
STEVENSON ROYCE 741C CAF NHF  
JRS ENCHANTRESS 16A  
BWB DELEGATE 50'95  
BWB BEATRICE 16'96 OF 2100

PERF	BW	205D	365D	EPDs	BW	WW	YW	Milk	TM	CE
	86	708			1.1	42	70	18	39	CE

333Y is the last of our Perfections to ever sell as we sold him in our last year's sale to TJ Farms. Perfection 333Y can be bred to larger heifers and will make those soft made hairy calves that Perfection is known for.



# Pursuit of EXCELLENCE



BLAIR'S

48

## BLAIRS DAYTONA 330Y

BBC 330Y April 06 2011 #1637445

RED FINE LINE MULBERRY 26P AMF OSF MAF  
**RED BLAIR'S DAYTONA 116U**  
RED JCC LASS 41N

SCHURRTOP MC 2500 AMF CAF  
**NLC UPTOWN GIRL 19U**  
DOUBLE AA BELLA 31'05

RED COMPASS MULBERRY 449M  
RED DUS FAYETTE 8G  
RED TER-RON MAMBO 28K  
RED JCC LASS 63K  
SCHURRTOP M C  
SCHURRTOP R S 1413 2153  
DOUBLE AA BLACKMAN 292'01  
DOUBLE AA BELLA 206'02

PERF	BW	205D	365D	EPDs	BW	WW	YW	Milk	TM	Sale CE
	72	704			0.8	56	95	22	49	

330Y comes from the great Bella line and this mating with Uptown Girl and Daytona is a winner. The first calf off Uptown 19U was sold in our Genetics in Motion '11 sale to Shaneri Farms.



Sire of Lots 46, 48, 69, 70, 71, & 72 - Red Blair's Daytona 116U



BLAIR'S

49

## BLAIRS NEW GENERATION 900Y

BBC 900Y May 10 2011 #1648951

O C C GENESIS 872G  
**DUFF NEW GENERATION 6107**  
 O C C DIXIE ERICA 814G

LEACHMAN SAUGAHATCHEE 3000C AMF CAF NHF  
**PRIME TIME'S GRACE 911'99**  
 YOUNG DALE GRACE 37C

O C C DOCTOR 940D CAF  
 BLACKBIRD OF R R 1204  
 O C C ANCHOR 771A CAF  
 O C C DIXIE ERICA 764C  
 N BAR EMULATION EXT  
 LEACHMAN B C 7100  
 WSF GRAND SLAM  
 YOUNG DALE GRACE 3R

PERF	BW	205D	365D	EPDs	BW	WW	YW	Milk	TM	5 Star CE
	78	736								

900Y is the result of a flush we bought at the Royal Winter sale in Toronto. The mating of New Generation and Leachman Saugahatchee is very interesting and should warrant your attention.



BLAIR'S

50

## BLAIRS NEW GENERATION 357Y

BBC 357Y May 09 2011 #1637506

O C C GENESIS 872G  
**DUFF NEW GENERATION 6107**  
 O C C DIXIE ERICA 814G

R R SCOTCHCAP 9440 AMF NHF  
**CARRUTHERS TIPTOP 18J**  
 WHITESHORE TIPTOP 40Y

O C C DOCTOR 940D CAF  
 BLACKBIRD OF R R 1204  
 O C C ANCHOR 771A CAF  
 O C C DIXIE ERICA 764C  
 SCOTCH CAP AMF CAF NHF  
 BLACKCAP OF R R 5367  
 WHITESHORE TERMINATOR 21T  
 WILMO TIPTOP 28J

PERF	BW	205D	365D	EPDs	BW	WW	YW	Milk	TM	5 Star CE
	81	773			3.0	37	66	12	31	

357Y is a neat pedigree. We love every SCOTCHCAP 9440 female we own and New Generation offspring continue to gain popularity. Tip Top 18J progeny have sold to Roadhouse Ranch, John & Bonnie Midgley, Hogg's Farm & Ranch, Kerr Bros Grain Ltd., Scott Hougham and Lars Lunde.





BLAIR'S

**51**

## BLAIRS BLACKMAN 307Y

BBC 307Y February 14 2011 #1640991

GEIS BLACKMAN 224'05  
**TGA BLACKMAN 8072U**  
TGA MISS BELLA 1056L

SOO LINE TRADITION 6034  
**EASTONDALE LADY 22'09**  
TRIPLE L LADY MIDLAND 22P

GEIS BLACKMAN 186'00  
GEIS PRIDE 139'01  
STEVENSON BRUNO 561G CAF NHF  
RON'S BELLA 73G  
SITZ TRADITION RLS 8702  
H A BELETTA 0219  
BR MIDLAND AMF CAF NHF  
SUZIE OF TWO M 6J

PERF	BW	205D	365D	EPDs	BW	WW	YW	Milk	TM	Sedley CE
	84	639	1249		2.8	33	64	15	32	

307Y is recommended for heifers and will definitely get a 3 star on your catalog. BR Midland, Sitz Tradition and Geis Blackman in the pedigree makes 307Y worth your attention.

BLAIR'S

**52**

## BLAIRS ADVANTAGE 319Y

BBC 319Y March 11 2011 #1637435

SANDY BAR ADVANTAGE 43M  
**WILBAR ADVANTAGE 202R**  
WILBAR KEEPSAKE 929N

SCA 3299 OF IDEAL 1418  
**SCA FLORA 25P**  
SCA FLORA 57K

TC ADVANTAGE AMF CAF NHF  
SANDY BAR JEMINA 44K  
S A F 598 BANDO 5175 AMF CAC  
WILBAR KEEPSAKE 508L  
IDEAL 1418 OF 8103 4286 AMF CAF NHF  
SCA 16E OF IDEAL 033 7258  
SCA KRUGERRAND 69G  
GET-A-LONG FLORA 055

PERF	BW	205D	365D	EPDs	BW	WW	YW	Milk	TM
	104	741	1231		5.4	47	75	13	37

Advantage 319Y is a power bull that needs a good look. The dam came out of the Diamond B dispersal and the Wilbar Advantage sire is very proven. Progeny off Flora 25P progeny have sold to OOO Verkh-nevolzhsky Livestock Complex and One Earth Farms.



# 2013



BLAIR'S

**53**

## BLAIRS ADVANTAGE 321Y

BBC 321Y March 17 2011 #1637436

SANDY BAR ADVANTAGE 43M  
**WILBAR ADVANTAGE 202R**  
 WILBAR KEPSAKE 929N

ALBERDA TRAVELER 416 AMF CAF NHF  
**DBRL TIBBIE 04N**  
 RRD TIBBIE 12E

TC ADVANTAGE AMF CAF NHF  
 SANDY BAR JEMINA 44K  
 S A F 598 BANDO 5175 AMF CAC  
 WILBAR KEPSAKE 508L  
 D H D TRAVELER 6807 AMF NHF  
 ALBERDA QUEEN KIMBERLY 222  
 RITO 2100 G D A R  
 MVF TIBBIE 16C

PERF	BW	205D	365D	EPDs	BW	WW	YW	Milk	TM	5 Star CE
	77	640			1.0	35	65	14	32	

321Y is off a super long spined deep sided Alberta Traveler daughter we bought from the Diamond B dispersal. Check this guy out. The Advantage sons are real good. Have a look. Progeny off 4N have sold to Byrne Sagen, R & M Cattle Co Ltd., Wilbar Farms, Alan and Lorraine Sanford and One Earth Farms.

MAINSTREAM

**54**

## MAINSTREAM GENETICS SHAKER 07Y

MSG 07Y February 17 2011

BC 7022 RAVEN 7965  
**EXAR RAVEN 8096**  
 RR ENVIOUS BLACKBIRD 4487

WOODHILL FORESIGHT  
**MUIRHEAD'S TRIXY 7T**  
 HOWE MS BLACK QUEEN 142M

B C MARATHON 7022  
 O C C BLACKBIRD 796F  
 EXAR MERIT 216  
 RR ENVIOUS BLACKBIRD 0290  
 PAPA FORTE 1921  
 BON VIEW GAMMER 85  
 MERIT DIESEL 8041  
 NORTHLINE BLACK QUEEN 112J

PERF	BW	205D	365D	EPDs	BW	WW	YW	Milk	TM
	86								

If you're looking for a bull that will add pounds to your calves, 07Y has the genetic potential to do just that. He's moderate in type, but stout made, thick topped and gets out and moves freely.



# Pursuit of EXCELLENCE

MAINSTREAM

55

## MAINSTREAM GENETICS CRUISE 42Y

MSG 42Y February 25 2011 #1714534

BC 7022 RAVEN 7965  
**EXAR RAVEN 8096**  
RR ENVIOUS BLACKBIRD 4487

MERIT DIESEL 8041  
**HOWE MS BLACK QUEEN 142M**  
NORTHLINE BLACK QUEEN 112J

B C MARATHON 7022  
O C C BLACKBIRD 796F  
EXAR MERIT 216  
RR ENVIOUS BLACKBIRD 0290  
SUNNY GROVE EXTRA 2E  
HILOW LADY MCHENRY 15A  
NORTHLINE BLACK INC. 89F  
KBJ DUCHESS 293C

PERF	BW	205D	365D	EPDs	BW	WW	YW	Milk	TM
	84								

42Y is a stouter made, deep ribbed bull that is clean in through his front. He's a big hipped, strong topped, free moving bull that will work well in any commercial herd.



MAINSTREAM

56

## MAINSTREAM GENETICS KRAMER 32Y

MSG 32Y February 16 2011 #1714533

BC 7022 RAVEN 7965 DWF AMF CAF NHF  
**EXAR RAVEN 8096**  
RR ENVIOUS BLACKBIRD 4487

SUMMITCREST HI FLYER 3B18  
**BWB LADY 32'00**  
BWB LADY 16'98 OF FULLBACK

B C MARATHON 7022  
O C C BLACKBIRD 796F  
EXAR MERIT 216  
RR ENVIOUS BLACKBIRD 0290  
HOFF HI FLYER S C 7134  
SUMMITCREST LASS 229Y  
RITO 9FB3 OF 5H11 FULLBACK  
BWB DELEGATE LADY 21'94

PERF	BW	205D	365D	EPDs	BW	WW	YW	Milk	TM
	82								

32Y is a smooth fronted, soft made bull that exemplifies natural muscling and lots of shape. He is a moderate framed bull out of EXAR Raven 8096 and a BWB cow. This combination will work well on heifers.



JACKSON

57

## CCCJ ABERDEEN 9Y

CCCJ 9Y February 07 2011 #1627339

C R A BEXTOR 872 5205 608 AMF CAF NHF  
**TC ABERDEEN 759 AMF CAF NHF**  
TC BLACKBIRD 4034 CAF

MVF RETAIL PRODUCT 54S  
**MVF ERROLLINE 72W**  
MVF ERROLLINE 174T

B A R EXT TRAVELER 205 AMF CAF NHF  
CRA LADY JAYE 608 498 S EASY  
BON VIEW NEW DESIGN 208 AMF CAC NHF  
TC BLACKBIRD 1013  
G A R RETAIL PRODUCT AMF CAF NHF  
MVF TIBBIE 123L  
WESTERN WIDESPREAD 1L  
MVF ERROLLINE 249P

PERF	BW	205D	365D	EPDs	BW	WW	YW	Milk	TM
	82	717			3.6	49	89	31	56

If you are looking for a heifer bull, this is the one for you. 9Y is sired by the calving ease sire TC Aberdeen out of a first calf heifer. His dam 72W is a beautiful uddered young female. This bull is a total outcross to any other bull in the sale.



# 2013



Sire of Lot 60, 61 & 62 - Belvin Wavelength 1'09

## MIDNIGHT FIRE 59

### KENBERT NETWORKTH 9Y

JKHF 9Y March 02 2011 #1647234

S A V 8180 TRAVELER 004  
**S A V NET WORTH 4200 AMF CAF NHF**  
S A V MAY 2410

G D A R OSCAR 711 AMF NHF  
**LINWOOD RUBY 21G**  
LINWOOD RUBY 16C

SITZ TRAVELER 8180 AMF CAF NHF  
BOYD FOREVER LADY 8003  
S A F 598 BANDO 5175 AMF CAF  
S A V MAY 6269  
BALDRIDGE OSCAR  
L T FOREVER LADY 395 G D A R  
WOODHILL TRIPLE THREAT AMF CAF  
LINWOOD RUBY 16W

PERF	BW	9/27/11	365D	EPDs	BW	WW	YW	Milk	TM
	86	716			2.7	47	79	21	44

This is an embryo out of S A V Net Worth 4200 and Linwood Ruby 21G. He is an impressive animal out of our embryo program. This long-sided bull has lots of depth and muscling as well as a good set of feet and legs. These qualities, together with his moderate birth weight make him an excellent choice for a herd sire.

## MIDNIGHT FIRE 61

### KENBERT WAVELENGTH 45Y

JKHF 45Y April 22 2011 #1710425

HF BEARS PAW 32T  
**BELVIN WAVELENGTH 1'09**  
BELVIN LADY BLOSSOM 22'02

BELVIN SPITFIRE 109'06  
**KENBERT SPITFIRE RUBY 109U**  
KENBERT BANDO RUBY 1S

HF KODIAK 5R AMF CAF NHF MAF  
HFDF ECHO 13N  
O G L BATTLE CRY 427 128  
BELVIN LADY BLOSSOM 47'97  
PEAK DOT STOCKMAN 254N  
BELVIN GEORGINA 81'03  
L T 598 BANDO 9074 AMF CAF NHF  
LINWOOD RUBY 22G

PERF	BW	9/27/11	365D	EPDs	BW	WW	YW	Milk	TM
	60	702			1.6	38	77	19	38

This is a son out of the bull Belvin Wavelength 1'09 who we purchased at the Calgary Bull Sale in 2010. Wavelength throws long, deep-bodied calves. 46Y's 60 pound birth weight makes him a good heifer bull. Though he is a late April calf he has an impressive weaning weight gain of 4.52/day. 45Y is a half-brother to JKHF 13Y and RESA 28Y.

## MIDNIGHT FIRE 58

### KENBERT DYNAMITE 38Y

JKHF 38Y April 10 2011 #1710422

MOHNEN DYNAMITE 1356 AMF CAF NHF  
**PEAK DOT DYNAMITE 12U**  
HEROINE OF PEAK DOT 811G

G A R GRID MAKER AMF CAF NHF  
**KENBERT GRIDMAKER LADY 83N**  
CRESCENT CREEK PRIDE LADY 36Y

BALDRIDGE KABOOM K243 KCF CAF  
MOHNEN JILT 910 CAF  
2TM STOCKMANS OSCAR 210  
WINDOVER HEROINE 13U  
G D A R TRAVELER 044 AMF CAF NHF  
G A R PRECISION 2536 AMC NHF  
FREEWAY 276T OF J R S  
CRESCENT CREEK JET LADY 51S

PERF	BW	9/27/11	365D	EPDs	BW	WW	YW	Milk	TM
	101	624			4.9	44	81	11	33

38Y comes from a very strong pedigree. His sire is a son out of Mohnen Dynamite 1356 that we purchased from Peak Dot Ranch. 38Y's dam has served us well throughout the years and has produced many replacement heifers for us. 38Y is a taller bull that is very thick, deep and long. He will make an excellent herd bull for cows because of his higher birth weight.

## MIDNIGHT FIRE 60

### KENBERT WAVELENGTH 28Y

RESA 28Y March 12 2011 #1715033

HF BEARS PAW 32T  
**BELVIN WAVELENGTH 1'09**  
BELVIN LADY BLOSSOM 22'02

KENBERT FOCUS 8T  
**KENBERT FOCUS MISS QUALITY 7**  
NEW FORCE MISS QUALITY 65T

HF KODIAK 5R AMF CAF NHF MAF  
HFDF ECHO 13N  
O G L BATTLE CRY 427 128  
BELVIN LADY BLOSSOM 47'97  
S A F FOCUS OF E R AMF CAF NHF  
WESTERN 9440 SC MISSIE 900J  
GAMBLES HOT ROD  
VALLEY BLOSSOM MS QUALITY 820L

PERF	BW	9/27/11	365D	EPDs	BW	WW	YW	Milk	TM
	81	638			1.1	21	41	10	

28Y is another Belvin Wavelength 1'09 son that is from our daughter Teresa's herd. He is a very complete, thick, deep, moderate framed bull that will make a great heifer or cow bull. He would be a great addition to any herd.

## MIDNIGHT FIRE 62

### KENBERT WAVELENGTH 13Y

JKHF 13Y March 04 2011 #1710352

HF BEARS PAW 32T  
**BELVIN WAVELENGTH 1'09**  
BELVIN LADY BLOSSOM 22'02

S A V FINAL ANSWER 0035 AMF CAF NHF  
**KENBERT F A KYMA 23W**  
KENBERT FOREMAN KYMA 23T

HF KODIAK 5R AMF CAF NHF MAF  
HFDF ECHO 13N  
O G L BATTLE CRY 427 128  
BELVIN LADY BLOSSOM 47'97  
SITZ TRAVELER 8180 AMF CAF NHF  
S A V EMULOUS 8145 CAF  
TC FOREMAN 016  
KENBERT JULIO KYMA 14P

PERF	BW	9/27/11	365D	EPDs	BW	WW	YW	Milk	TM
	76	740			1.4	50	89	21	45

13Y is another very strong Belvin Wavelength 1'09 son. Wavelength was purchased at the Calgary bull sale in 2010. Along with the other two Wavelength sons, they are very similar in make and style and will work well in any herd. 13Y's 76 pound birth weight, smooth shoulder and overall balance will make him an excellent heifer bull prospect.



# Pursuit of EXCELLENCE

MIDNIGHT FIRE

**63**

## KENBERT PIONEER 26Y

JKHF 26Y March 12 2011 #1710372

S A V FINAL ANSWER 0035 AMF CAF NHF  
**S A V PIONEER 7301 AMF CAF NHF**  
S A V BLACKBIRD 5297 CAC

BELVIN RENEGADE 6'05  
**KENBERT RENEGADE RUBY 54W**  
KENBERT CHIEF RUBY 48N

SITZ TRAVELER 8180 AMF CAF NHF  
S A V EMULOUS 8145 CAF  
BOYD NEW DAY 8005 AMF CAF NHF  
S A V BLACKBIRD 1082 CAC  
TC FREEDOM 104 AMF CAF NHF  
BELVIN LADY BLOSSOM 22'02  
CRESCENT CREEK CHIEF 93J  
KENBERT FELICE 41K

PERF	BW	9/27/11	365D	EPDs	BW	WW	YW	Milk	TM
	89				2.3	45	87	26	48

Here is a clean-fronted, thick, deep, long-bodied S A V Pioneer 7301 son. His 89 pound birth weight makes him a good cow bull. 26Y is a half-brother to JKHF 21Y.

MIDNIGHT FIRE

**64**

## KENBERT PIONEER 21Y

JKHF 21Y March 10 2011 #1710361

S A V FINAL ANSWER 0035  
**S A V PIONEER 7301 AMF CAF NHF**  
S A V BLACKBIRD 5297 CAC

CRESCENT CREEK FORTUNE 100K  
**KENBERT FORTUNE RUBY 37N**  
KENBERT CHIEF RUBY 31L

SITZ TRAVELER 8180 AMF CAF NHF  
S A V EMULOUS 8145 CAF  
BOYD NEW DAY 8005 AMF CAF NHF  
S A V BLACKBIRD 1082 CAC  
CRESCENT CREEK FORTUNE 16H  
DWAJO MISS LUCY 33H  
CRESCENT CREEK CHIEF 93J  
LINWOOD RUBY 11C

PERF	BW	9/27/11	365D	EPDs	BW	WW	YW	Milk	TM
	83	648			2.6	46	85	20	43

This 83 pound birth weight bull would be good for either heifers or cows. Here is another S A V Pioneer 7301 son who is clean-fronted, deep, long-bodied and well-muscled. He would make a very diverse herd sire with his potential to service heifers and cows. He is a half-brother to JKHF 26Y

MIDNIGHT FIRE

**65**

## KENBERT RENEGADE 42Y

JKHF 42Y April 22 2011 #1710423

TC FREEDOM 104 AMF CAF NHF  
**BELVIN RENEGADE 6'05**  
BELVIN LADY BLOSSOM 22'02

KENBERT PRIME CUT 26P  
**KENBERT PRIME CUT RUBY 14S**  
KENBERT QUANTUM RUBY 49P

CONNEALY FOREFRONT AMF CAF NHF  
T C RUBY 9095 CAF  
O G L BATTLE CRY 427 128  
BELVIN LADY BLOSSOM 47'97  
PEAK DOT PRIME CUT 76M  
ELLIOTT PATRICIA 13L  
CRESCENT CREEK QUANTUM 138M  
KENBERT HEIDI 18K

PERF	BW	9/27/11	365D	EPDs	BW	WW	YW	Milk	TM
	80	666			3.8	32	65	19	35

Here is a moderate framed, moderate birth weight bull that is out of our Belvin Renegade 6'05 herd sire. He has a flat top and a deep body with a wide chest floor. Strong feet and legs will carry him a long way. His good hair coat is also a plus. This late April calf has an impressive ROG of 4.13 up to his weaning weight.

MIDNIGHT FIRE

**66**

## KENBERT FINAL ANSWER 19Y

JKHF 19Y March 08 2011 #1710360

SITZ TRAVELER 8180 AMF CAF NHF  
**S A V FINAL ANSWER 0035 AMF CAF NHF**  
S A V EMULOUS 8145 CAF

BELVIN SPITFIRE 109'06  
**KENBERT SPITFIRE RUBY 95W**  
KENBERT CHAMPION RUBY 21R

G D A R TRAVELER 71 AMF CAF NHF  
SITZ EVERELDA ENTENSE 1137  
BON VIEW BANDO 598 AMF CAC  
S A V SKY EMULOUS 2124  
PEAK DOT STOCKMAN 254N  
BELVIN GEORGINA 81'03  
M DOUBLE B CHAMPION 31N  
LINWOOD RUBY 22G

PERF	BW	9/27/11	365D	EPDs	BW	WW	YW	Milk	TM
	71	642							

This 71 pound birth weight calf out of S A V Final Answer 0035 is a good heifer bull. 19Y has a long, full hair coat. He is a long, deep, thick animal that is very well muscled.

MIDNIGHT FIRE

**67**

## RED KENBERT MOMENTUM 2Y

TKF 2Y February 4 2011 #159328

RED BCAR WILD CARD  
**RED SOO LINE MOMENTUM 7051**  
RED SOO LINE BANE BERRY 5238

RED SSS SHIVER'N JOE 699P  
**RED JCC SPARKLES 60S**  
RED JCC SPARKLES 32M

BCAR RANCHER 8'00  
BREED CREEK PRIDE 33F 21'98  
RED CRESCENT CREEK FRCHIEF 75L  
RED SOO MS BANE BERRY 3193  
RED LARSON RED LIGHTNING  
RED SSS SOAPY 770L  
RED GOLD-BAR KING V415 107K  
RED JCC SPARKLES 64H

PERF	BW	9/27/11	365D	EPDs	BW	WW	YW	Milk	TM
	93	890							

2Y is a very solid and complete bull that will excel however you decide to use him in your breeding program. 2Y's dam Red JCC Sparkles 60S was purchased from the Soo Line Red Angus Dispersal sale. 2Y is a very powerful bull that is long sided and deep bodied. He carries his muscling and thickness throughout. His birth weight is on the higher side, making him better suited for cows or second calvers. This bull is owned by Tami-Lynn and Steven Lehr.



Dam of Lot 67 - Red JCC Sparkles 60S

# 2013



JACKSON  
**68**

## RED JCC ALLIANCE 8Y

LEVI 8Y January 31 2011 #1627999

RED NORTHLINE ATLANTIC CITY  
**RED WHEEL ALLIANCE 22U**  
RED WHEEL AUBURN 2K

RED SSS YUKON 440K  
**RED SSS BELLE 98M**  
RED SSS BELLE 585Z

RED PIE ATLANTIC 2204 OSF MAF  
RED NORTHLINE QUEEN 240H  
RED HANDFORD NONE BETTER 260D  
RED CRANSTON HERA 3G  
RED BJR RAMBLER 5162 OSF  
RED SSS PRINCESS 15H  
RED BIEBER DSIGN 1325-082  
RED SSS DURABELLE 423X

PERF	BW	205D	365D	EPDs	BW	WW	YW	Milk	TM
	82	639			-0.6	46	76	21	44

Here is a deep sided, straight topped bull out of the sire, Red Wheel Alliance, who is a mainstay herdsire at the Bar EL Herd. 8Y's Dam is a 10 year old cow who has been a solid, consistent producer here at JCC.



Dam of Lot 69 - Red Cockburn Ms Fanny 191M

BLAIR'S  
**69**

## RED BLAIR'S DAYTONA 6Y

BBC 6Y January 21 2011 #1714922

RED FINE LINE MULBERRY 26P AMF OSF MAF  
**RED BLAIR'S DAYTONA 116U**  
RED JCC LASS 41N

RED T-S PATRIOT 84K  
**RED COCKBURN MS FANNY 191M**  
RED COCKBURN FANNY 50H

RED COMPASS MULBERRY 449M  
RED DUS FAYETTE 8G  
RED TER-RON MAMBO 28K  
RED JCC LASS 63K  
RED FLYING K PATRIOT 16B  
RED CFRA BEEFSTEAK 5F  
RED TASSEL PINNACLE 203C  
RED SHODEREE FANNY 28E

PERF	BW	205D	365D	EPDs	BW	WW	YW	Milk	TM
	87	702			2.9	65	105	18	50

Daytona 6Y is cool and very special from a genetics perspective. Check out the gorgeous 191M dam that sold to Rust Mountain View Ranch for \$29,500 and the sire Red Blair's Daytona that sold in Red Roundup for \$20,000(half interest). Check out the EPD's for WW, YW, TM, REA and Carcass.

BLAIR'S  
**70**

## RED BLAIRS DAYTONA 34Y

BBC 34Y February 22 2011 #1637426

RED FINE LINE MULBERRY 26P AMF OSF MAF  
**RED BLAIR'S DAYTONA 116U**  
RED JCC LASS 41N

RED BELL ROCK JESTER 316N  
**RED GET-A-LONG L. LADY 8109**  
RED GET-A-LONG LEADING LADY902

RED COMPASS MULBERRY 449M  
RED DUS FAYETTE 8G  
RED TER-RON MAMBO 28K  
RED JCC LASS 63K  
DURLOWE JESTER 34L  
KBJ DUCHESS 316G  
RED GEIS PRIME RIB 411  
RED LLB LEADING LADY 39G

PERF	BW	205D	365D	EPDs	BW	WW	YW	Milk	TM
	74	580			-0.8	48	77	20	44

Check out the combination of proven and outcross genetics in this pedigree. We purchased the 8109 dam in Red Roundup from Get-A-Long. Lots of both calving ease and performance in this pedigree.



# Pursuit of EXCELLENCE

BLAIR'S

71

## RED BLAIRS DAYTONA 94Y

BBC 94Y May 03 2011 #1644857

RED FINE LINE MULBERRY 26P AMF OSF MAF  
**RED BLAIR'S DAYTONA 116U**  
RED JCC LASS 41N

RED PERKS ADVANCE 121R OSF  
**RED T-K PRINCESS 1R**  
RED TOWAW PRINCESS 17D

RED COMPASS MULBERRY 449M  
RED DUS FAYETTE 8G  
RED TER-RON MAMBO 28K  
RED JCC LASS 63K  
RED RBJR ADVANCE A709 OSF MAF  
RED PERKS MISS RAMBO 8105 OSF  
RED ARSF BOLD EDITION 2A  
RED TOWAW PRINCESS 47Z

PERF	BW	205D	365D	EPDs	BW	WW	YW	Milk	TM
	87	709			4.8	67	111	13	47

The 94Y pedigree is chalked full of performance. The powerful big ribbed 1R dam is deceased now so this power pedigree can never be replicated. Check out the WW, YW, TM, REA and Carcass. If you are about raising lbs of beef then Daytona 94Y is for you.



Dam of Lot 71 - Red T-K Princess 1R

BLAIR'S

72

## RED BLAIRS DAYTONA 111Y

BBC 111Y May 06 2011 #1644901

RED FINE LINE MULBERRY 26P AMF OSF MAF  
**RED BLAIR'S DAYTONA 116U**  
RED JCC LASS 41N

RED PREMIER PATRIOT 16  
**RED GOLDEN DAWN KURUBA 24L**  
RED GEIS KURUBA 5'92

RED COMPASS MULBERRY 449M  
RED DUS FAYETTE 8G  
RED TER-RON MAMBO 28K  
RED JCC LASS 63K  
SAYRE PATRIOT  
CAMILLA BELLE 54D  
RED KBJ SAM'S PROSPECTOR 133Z OSF MAF  
THREE D KURUBA 36'86

PERF	BW	205D	365D	EPDs	BW	WW	YW	Milk	TM
	87	770			0.3	64	90	18	44

*Sedley*  
CE

The dam to Daytona 111Y is now deceased but has been a great donor for us. We purchased her at the last "All AI'D" sale in Olds. Progeny from Kuruba 24L have sold to Kinared Stock Farm, Ringstead Ranch Ltd., Fabulous Females, Wildcat Creek Ranch, Pius and Rosemarie Zoller, Chinook Arch Cattle Co. & JB Livestock Co., Larry Sushelnitski, Wheatland Colony, Metzger Farms and P.F.R.A.





# 2013



BLAIR'S

**73**

## RED BLAIRS COWBOY CUT 31Y

BBC 31Y March 17 2011 #1645147

RED LAZY MC STOUT 30S  
**RED LAZY MC COWBOY CUT 26U AMF NHF OSF MAF**  
RED LAZY MC STAR 185M OSF

RED LAZY MC DIVIDE 8J  
**RED TER-RON GOLDIE 240L**  
RED TER-RON GOLDIE 240J

RED LAZY MC SMASH 41N OSF  
RED LAZY MC SCYTHIA 78N  
LAZY MC WORLDWIDE 5K  
RED LAZY MC STAR 100J  
RED LOOSLI DIVIDE 507  
RED BLUE SPRUCE DINA 201Z  
RED SSS BOOM TOWN 260D  
RED TOP GOLDIE 40U

PERF	BW	205D	365D	EPDs	BW	WW	YW	Milk	TM	CE
	78	619	1093		1.5	58	76	10	39	

We were fortunate to use Cowboy Cut in our embryo program and the next two bulls show how powerful the Cowboy Cut genetics are. 31Y is long spined, big hipped and is also off the dam to Royal Bank Supreme Champion sire Red Ter-Ron Fully Loaded. You need to have a serious look here. The 240L dam might be one of the best Red Angus females I have seen. She is soft made, stout, moderate and hairy. Imagine what the offspring off this mating will look like.



Maternal brother to Lot 73 - Red Ter-Ron Fully Loaded 540R

BLAIR'S

**74**

## RED BLAIRS COWBOYS CUT 71Y

BBC 71Y April 20 2011 #1644893

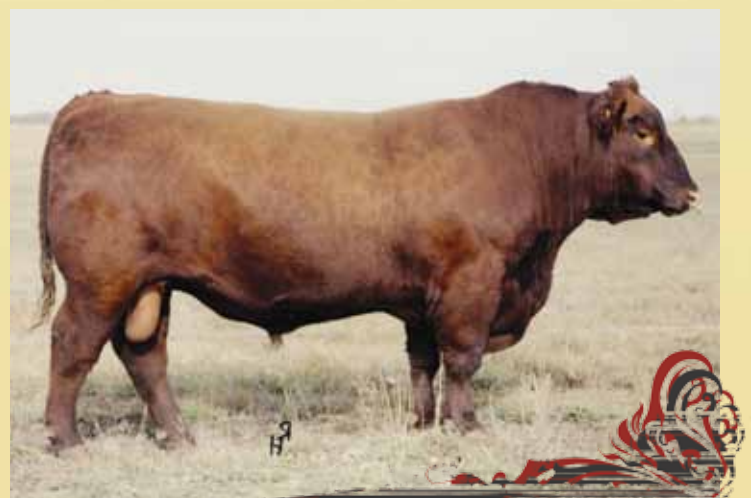
RED LAZY MC STOUT 30S  
**RED LAZY MC COWBOY CUT 26U AMF NHF OSF MAF**  
RED LAZY MC STAR 185M OSF

RED YY RED KNIGHT 640F OSF  
**RED TER-RON DUSTY 98J**  
RED ALDER ABG STAR DUST 8G

RED LAZY MC SMASH 41N OSF  
RED LAZY MC SCYTHIA 78N  
LAZY MC WORLDWIDE 5K  
RED LAZY MC STAR 100J  
RED YY 23L TOPPER 408D  
RED TOP GOLDIE 40U  
RED SSS BOOM TOWN 260D  
RED BRA STAR DUST 8B

PERF	BW	205D	365D	EPDs	BW	WW	YW	Milk	TM	CE
	82	594			1.5	59	84	11	41	

71Y is another extremely powerful son of Cowboy Cut and off the full sister to Red Ter-Ron Mambo. Mambo has had a huge impact on our program and Mambo sons have made a lasting impact on the breed. Dusty 98J is a cornerstone donor at Ter-Ron Farms and we were fortunate to have access to her for our embryo program.



Full brother to the dam of Lot 74 - Red Ter-Ron Mambo 28K



# Pursuit of EXCELLENCE

BLAIR'S

75

## RED BLAIRS RIBEYE 202Y

BBC 202Y January 25 2011 #1637409

RED BAR-E-L RIBEYE 103R OSF  
**RED COCKBURN RIBEYE 308U**  
RED WILBAR CORA 443P

RED LPC PONDEROSA 51F  
**RED LPC LASSIES PONDEROSA 56J**  
RED LPC LASSIE'S HB 49F

RED TER-RON DIGGER 11L  
RED BAR-E-L MARCIE 50N  
RED TER-RON TORNADO 157M  
RED HEAD CORA 159L  
RED SSS ZAMA PINE 37S  
RED LPC SOAPY CHIEF 2X  
RED LCC HEAVEN OR BUST1000B OSF MAF  
RED LPC LASSIE'S TCB 7D

PERF	BW	205D	365D	EPDs	BW	WW	YW	Milk	TM
	96	667			-1.1	48	69	11	35

202Y is the result of an in dam purchase from the SooLine Cattle Red Angus dispersal. This calving ease bull will work great for either heifers or cows. The Cockburn Ribeye sire now resides in Kansas at Wildcat Creek Ranch and I had the good fortune to see him this fall and he looks awesome. A serious heifer bull candidate here.



Sire of Lots 75 & 76 - Red Cockburn Ribeye 308U



Dam of Lot 76 - Red Soo Line Annie 7249



BLAIR'S

76

## WCAT RIBEYE 180Y

WCAT 180Y MARCH 17 2011 #1446458

RED BAR-E-L RIBEYE 103R OSF  
**RED COCKBURN RIBEYE 308U**  
RED WILBAR CORA 443P

RED SOO CHIEF 3508  
**RED SOO LINE ANNIE 7249**  
CRESCENT CREEK ANNIE 26F

RED TER-RON DIGGER 11L  
RED BAR-E-L MARCIE 50N  
RED TER-RON TORNADO 157M  
RED HEAD CORA 159L  
RED CRESCENT CREEK FRCHIEF 75L  
RED CRESCENT CREEK ANNIE 11H  
RITO 8094 PRAIRIELANE 2060  
RED CRESCENT CREEK ANNIE 68C

PERF	BW	205D	365D	EPDs	BW	WW	YW	Milk	TM
	108	628	1129		2.4	55	80	16	44

The Annie 7249 dam to 180Y is the World Angus Forum Reserve Champion Female. Combine that with Red Cockburn Ribeye and imagine the possibilities. You will notice the Marcie 50N dam in the pedigree of Cockburn Ribeye who is also the dam to Lot #30.

Internet Bidding Available

D | L | M | S  
www.dlms.ca



# 2013



77

BLAIR'S

77

## RED BLAIRS RELOAD 76Y

BBC 76Y April 27 2011 #1647331

RED TER-RON FULLY LOADED 540R  
**RED TER-RON RELOAD 703T CAF NHF OSF MAF**  
 RED TER-RON SAMARIA 103N

RED BAKERS CENTURY  
**RED BAKERS FAITH 8L OSF**  
 RED BROX FAITH 17C

RED HEARTLAND KNIGHT CHARM 11L  
 RED TER-RON GOLDIE 240L  
 RED BRYLOR SENSATION 6L  
 RED NDCC FARGO SAMARIA 103L  
 RED TOWAW MATRIX 19D  
 RED MEM MINOLA 71E  
 RED GET-A-LONG APACHE 135  
 RED BRYLOR FAITH 33Y

PERF	BW	205D	365D	EPDs	BW	WW	YW	Milk	TM
	94	769			3.4	51	73	4	29

Here is a neat opportunity to buy a full sib to the Red Blair's Faith 74Y bred heifer that was Reserve Champion Female at Edmonton Farm Fair and Canadian Western Agribition. The 8L dam is one of those powerfully made, big boned hairy donors that changes a breeding program.



Full sister to Lot 77 - Red Blair's Faith 74Y



# Pursuit of EXCELLENCE



BLAIR'S

78

## RED BLAIRS RELOAD 235Y

BBC 235Y March 02 2011 #1644884

RED TER-RON FULLY LOADED 540R  
**RED TER-RON RELOAD 703T CAF NHF OSF MAF**  
RED TER-RON SAMARIA 103N

RED SSS Bomber 907G  
**RED JCC SANDY 39L**  
RED CUTARM SANDY 662Y

RED HEARTLAND KNIGHT CHARM 11L  
RED TER-RON GOLDIE 240L  
RED BRYLOR SENSATION 6L  
RED NDCC FARGO SAMARIA 103L  
RED SSS BOOMER 803B  
RED CROWFOOT KATE 435D  
RED BRA REDWHEEL 33T OSF  
RED RAFTER FL POTEET 154N

PERF	BW	205D	365D	EPDs	BW	WW	YW	Milk	TM
	97	712	1210		2.8	52	80	11	37

Red Ter-Ron Reload has made a profound impact on the Wilbar Program and is the greatest son of Red Ter-Ron Fully Loaded. Reload 235Y is off the 39L donor that was recently sold to Ben Fraser from Australia. You can expect those dark cherry red calves off this great Reload son.



Sire of Lot 77 & 78 - Red Ter-Ron Reload 703T

# 2013



**BLAIR'S**  
**80** **RED BLAIR'S PERFECTION 49Y**  
BBC 49Y April 19 2011 #1637453

RED STEWART PATHFINDER 5L  
**RED U-2 PERFECTION 8067U**  
RED U-2 DUCHESS 334N

RED WILLOW CREEK DEEP 129N  
**RED TOPLINE QUEEN 663**  
RED TOP LINE QUEEN 235

RED FCC RAMBO 502 OSF  
RED JEWEL MISS PATHY 62A  
RED HOWE MR MATRIX 7L  
RED U-2 DUCHESS 162L  
RED PIE DEEP CANYON 908 OSC  
RED WILLOW CREEK MELTE 95L  
RED BRYLOR NEW TREND 22D OSF MAF  
RED TOP LINE QUEEN 45E

PERF	BW	205D	365D	EPDs	BW	WW	YW	Milk	TM	Scal CE
	86	632			1.0	50	75	12	37	

Perfection sums it up. This is the last natural Perfection to ever sell as we sold him in our last year's sale. Perfection sons are easy calving and soft haired. The high selling son in our 2012 sale was a Red U-2 Perfection that sold to Southview Ranch in Ceylon. The Queen 663 dam is making quite a mark in our program and you can expect to hear lots from her in the future. The Prowler son off Queen 663 sold to TJ Farms in our 2011 sale.



**BLAIR'S**  
**81** **RED BLAIRS MULBERRY 220Y**  
BBC 220Y February 09 2011 #1647335

RED COMPASS MULBERRY 449M  
**RED FINE LINE MULBERRY 26P AMF OSF MAF**  
RED DUS FAYETTE 8G

RED PREMIER PATRIOT 16  
**RED GOLDEN DAWN KURUBA 24L**  
RED GEIS KURUBA 5'92

RED HR RAMBO ET 91K  
RED BRYLOR MISS ROC 20H  
RED SILVEIRAS REDFORD OSF  
RED MC DOUGALL FAYETTE 59A  
SAYRE PATRIOT  
CAMILLA BELLE 54D  
RED KBJ SAM'S PROSPECTOR 133Z  
THREE D KURUBA 36'86

PERF	BW	205D	365D	EPDs	BW	WW	YW	Milk	TM	Scal CE
	89	651	1196		-0.6	56	93	17	45	

Here is the last Kuruba 24L offspring to sell as she is now deceased. Mulberry semen is very rare and off the market. Mulberry 220Y is a calving ease specialist and has a full sister working at Wildcat Creek in Kansas. The udders on the daughters of 220Y will be awesome.



# ODYSSEY



## REMITALL F ODYSSEY 67X

Registration # 1557522

D.O.B February 18, 2010

B.W. 79 lbs

HF FREE WHEELER 191N

**Sire: LLB FREE WHEELER 268S**  
LLB NITCHIE 637J

S A V 004 DENSITY 4336

**Dam: BROOKMORE KARAMA 100T**  
BROOKMORE KARAMA 24M

EPD's: B.W +3.5 W.W +44 Y.W +82 Milk +20 T.M +42

 **Blairs.Ag**  
cattle company

WWW.BLAIRSCATTLECO.COM

Kevin & Noreen Blair • Darren & Deb Blair  
Kevin 306-365-7922 • Darren 306-360-7707  
Office 306-365-3150  
E-mail: darren@blairs.ag • kevin@blairs.ag

*Remitall*  
Farms

Gary, Jaci and Richard Latimer  
Richard 403-507-1122 • Gary 403-507-1123 • Office 403-556-2742  
WWW.REMITALL.CA



# CUTTING EDGE



MILLIONAIRE

## HAYCOW CUTTING EDGE 055

Registration # 1407188

D.O.B February 11, 2010

B.W. 84 lbs

W C NORTHERN EDGE 0C04

JLG FREIGHT LINER 362

**Sire: LAFLINS CUTTING EDGE 2075**

**Dam: HAYCOW 370 PRINCESS 5002**

LAFLINS QUEEN JULIET 713

JLG PRINCESS JR 107 370

EPD's: B.W -1.7 W.W +64 Y.W +99 Milk +24 T.M +56

 **Blairs.Ag**  
cattle company

WWW.BLAIRSCATTLECO.COM

Kevin & Noreen Blair • Darren & Deb Blair  
PO Box 610 • Lanigan, Saskatchewan S0K 2M0  
Kevin 306-365-7922 • Darren 306-360-7707  
Office 306-365-3150  
E-mail: darren@blairs.ag • kevin@blairs.ag

*PIEPER RED ANGUS  
ROCK CREEK RED ANGUS  
FLYING W RED ANGUS*



# IRON HIDE

## FORGING A NEW FUTURE



### RED WRIGHTS 832S IRON HIDE 4Z

REGISTRATION # 1701795

D.O.B. FEBRUARY 28, 2012

B.W. 62 LBS

EPD's:

RED SIX MILE AVIATOR 217P  
Sire: RED SIX MILE SAKIC 832S  
RED SIX MILE CUJO 800M

RED BRYLOR NEW TREND 22D  
Dam: RED BWB FAYE 48N OF TREND  
RED BWB FAYE 77'00 OF 10H

B.W +1.0  
W.W +57  
Y.W +82  
Milk +22

**Iron Hide is one of the most powerful young herdsires today. We expect explosive genetic potential.**

## THANK YOU!

Damar Farms, Wisconsin for the purchase of Iron Hide semen at the Canadian Western Agribition for \$275.00/Straw

Wildcat Creek, Kansas & J6 Farms, Nebraska for the purchase of Iron Hide semen at the National Western Stock Show for \$350.00/Straw

 **Blairs.Ag**  
cattle company

[WWW.BLAIRSCATTLECO.COM](http://WWW.BLAIRSCATTLECO.COM)

Kevin & Noreen Blair • Darren & Deb Blair  
PO Box 610 • Lanigan, Saskatchewan S0K 2M0  
Kevin 306-365-7922 • Darren 306-360-7707 Office 306-365-3150  
E-mail: [darren@blairs.ag](mailto:darren@blairs.ag) • [kevin@blairs.ag](mailto:kevin@blairs.ag)





**FATAL ATTRACTION - DAM**

# GAME CHANGER

*Owned by the Game Changer syndicate*

MYTTY IN FOCUS  
**VIN-MAR FOCUS IN 8847**  
BALDRIDGE ERROLINE S216

DUFF NEW ATTRACTION 6110  
**NLC FATAL ATTRACTION 1W**  
DOUBLE AA BELLA 31'05

S A F FOCUS OF E R  
MYTTY COUNTESS 906  
RITO 112 OF 2536 RITO 616  
BALDRIDGE ERROLINE L540

O C C GENESIS 872G  
O C C DIXIE ERICA 814G  
DOUBLE AA BLACKMAN 292'01  
DOUBLE AA BELLA 206'02



## SEMIN

**\$55/unit, minimum 10 straws**  
*Contact Blairs.Ag to order*

**POWERFUL OUTCROSS HEIFER BULL GENETICS**



**Blairs.Ag Cattle Company** • OFFICE 306-365-3150  
PO Box 610 Lanigan, Saskatchewan S0K 2M0  
**Kevin & Noreen Blair • Darren & Deb Blair**  
KEVIN 306-365-7922 • kevin@blairs.ag  
DARREN 306-360-7707 • darren@blairs.ag  
**WWW.BLAIRSCATTLECO.COM**



GET  
MOTIVATED

## EXPLOSIVE EXCITEMENT

is one way to describe the atmosphere surrounding **MOTIVE 1403** in the yards at Denver 2013. We have set high expectations for this new sire.

SOOLINE  
**MOTIVE** 1403

HF KODIAK SR S A V FINAL ANSWER 0035  
Sire: **SOO LINE MOTIVE 9016** Dam: **SHADY BROOK EVERENTENSE 2039**  
TLA BEAUTY SR SCR EVERELDA ENTENSE 748  
EPD's: BW +1.0 WW +54 YW +100 Milk +23



 **Blairs.Ag**  
cattle company

[WWW.BLAIRSCATTLECO.COM](http://WWW.BLAIRSCATTLECO.COM)

Kevin & Noreen Blair • Darren & Deb Blair  
PO Box 610 • Lanigan, Saskatchewan S0K 2M0  
Kevin 306-365-7922 • Darren 306-360-7707 Office 306-365-3150  
E-mail: [darren@blairs.ag](mailto:darren@blairs.ag) • [kevin@blairs.ag](mailto:kevin@blairs.ag)





**SEMEN**  
**\$45/UNIT**

commercial & volume discounts  
 Contact us for details.

# POWER EYE

POWERFUL DESIGN. POWERFUL RED GENETICS. POWERFUL REPLICA OF HIS EXCLUSIVE SIRE.

**SOOLINE POWER EYE 161X** (Red Cockburn Ribeye 308U x Red TR Lynn 301R)  
 RAAA# 1406779 DOB: February 2010 BW: 77 WW: 682 YW: 1225



SIRE



DAM



DAUGHTER



Join us online for our Genetics of Distinction Sale.  
Featuring Semen, Frozen Embryo, and Pregnant Recip Lots

# genetics *of* DISTINCTION

August 12<sup>th</sup> - 22<sup>nd</sup>, 2013



 **Blairs.Ag**  
cattle company

Go to Cattle in Motion to view and bid online  
[www.cattleinmotion.com](http://www.cattleinmotion.com)

BELLA SPUR INNOVATIVE MEDIA INC.  
551 WOODBRIDGE WAY, SHERWOOD PARK, AB T8A 4G9



# GENETICS... IN *motion*

Join us **AT THE FARM** (Lanigan, Saskatchewan)



OCTOBER 2013 

 **Blairs.Ag**  
CATTLE COMPANY  
LANIGAN, SASKATCHEWAN  
CANADA • 1 PM